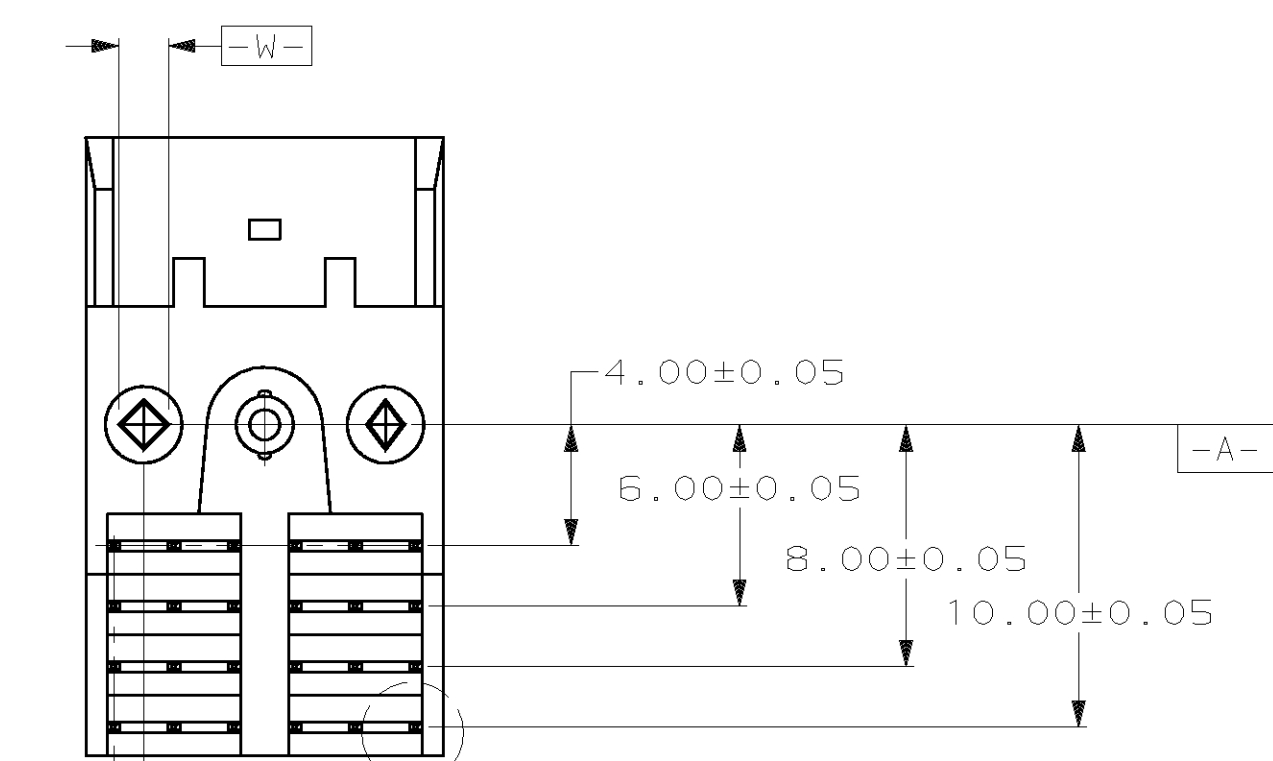
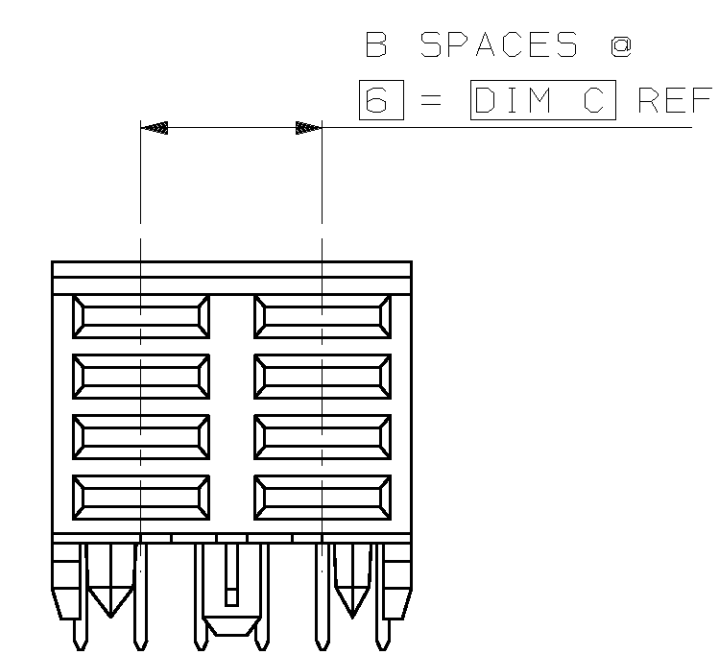
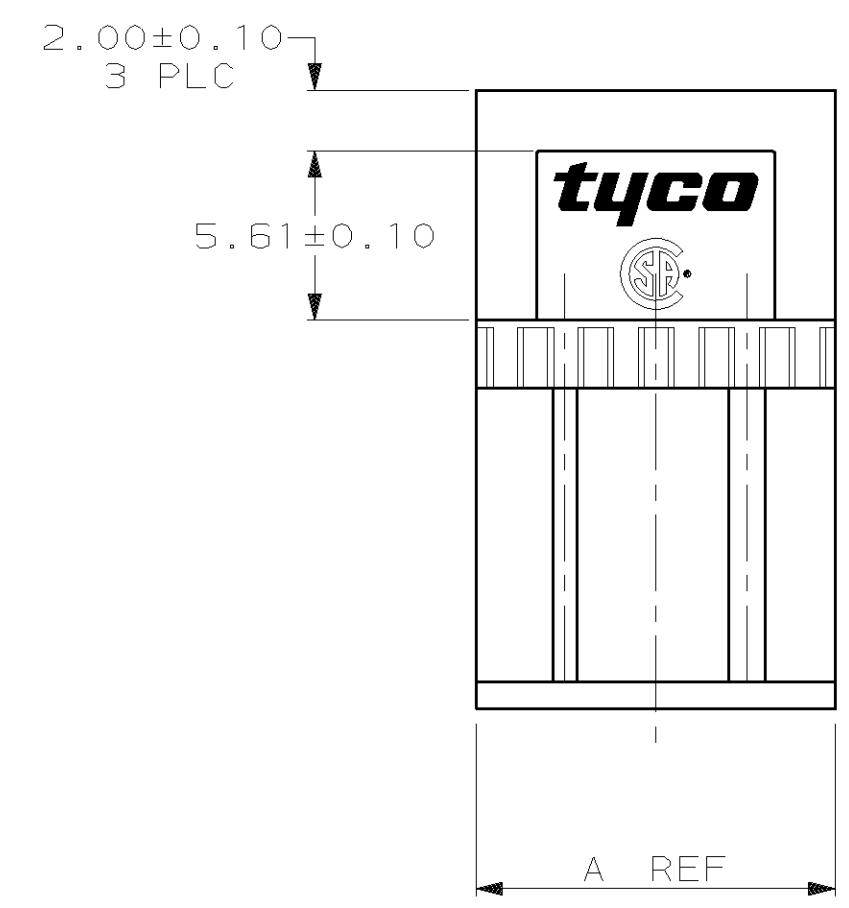
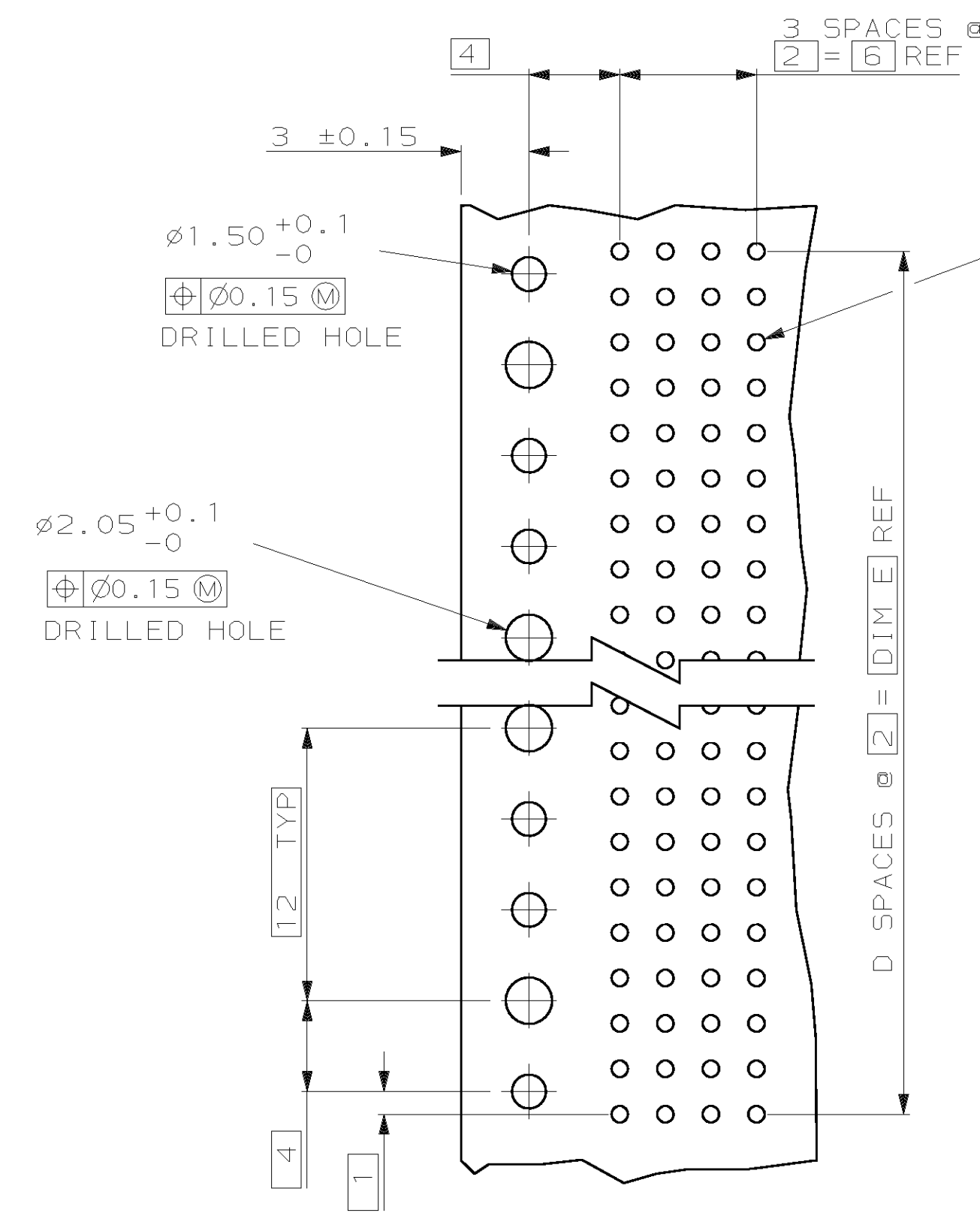
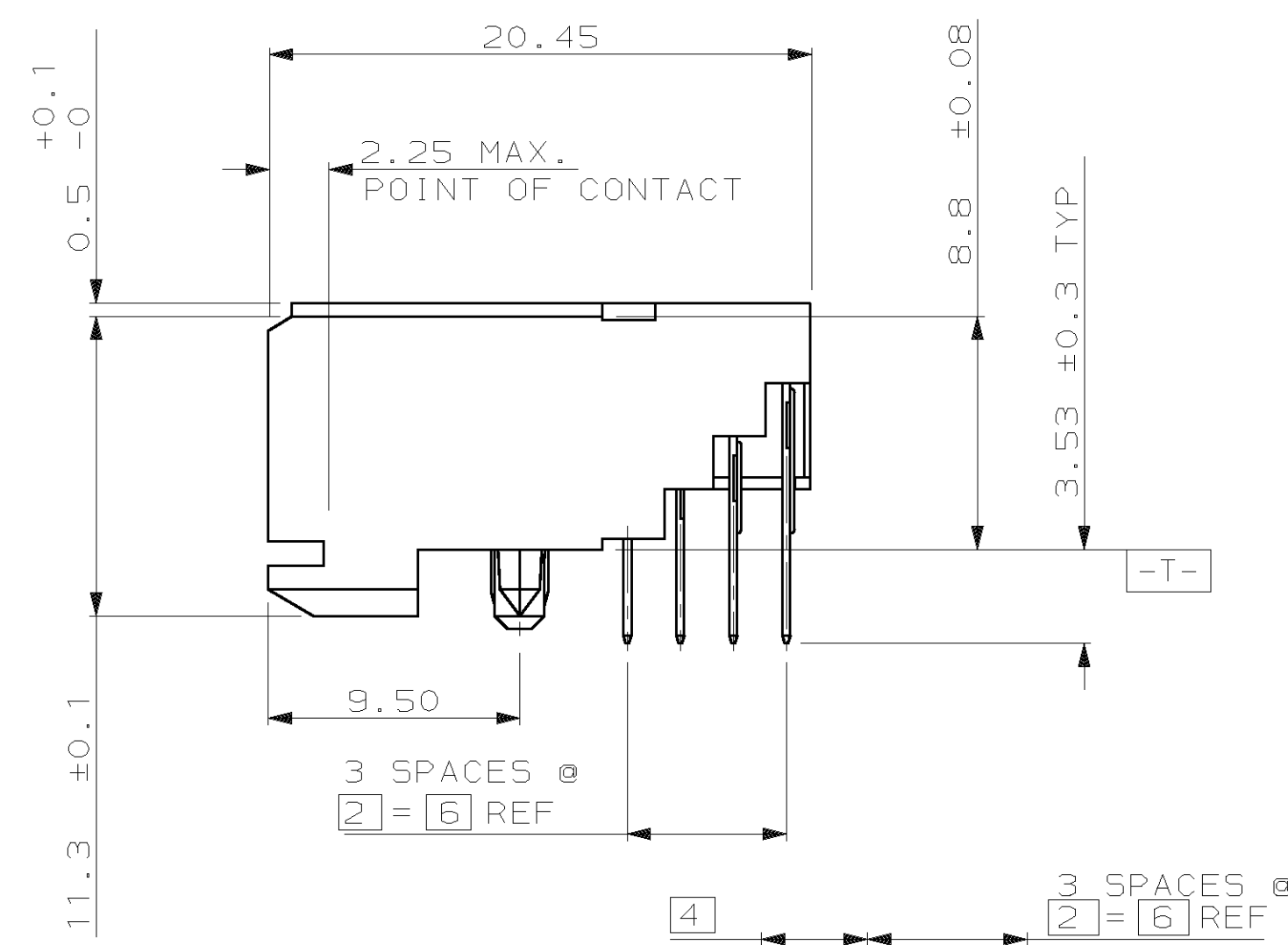
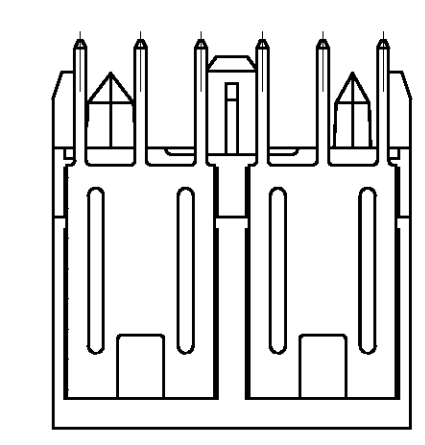


LOC	DIST	P	F	ZONE	LTR	DESCRIPTION	DATE	APPD
AD	00							
				J		REVISE PER ECN 0U1B-0229-00	17NOV00	SU/DK
				K		REV PER EC 0U1B-0336-00	02 FEB 01	DK
				L		REV PER EC 0U1B-0123-01	11 JUN 01	DK
				M		REV PER EC 0512-0242-03	10 SEP 03	RW

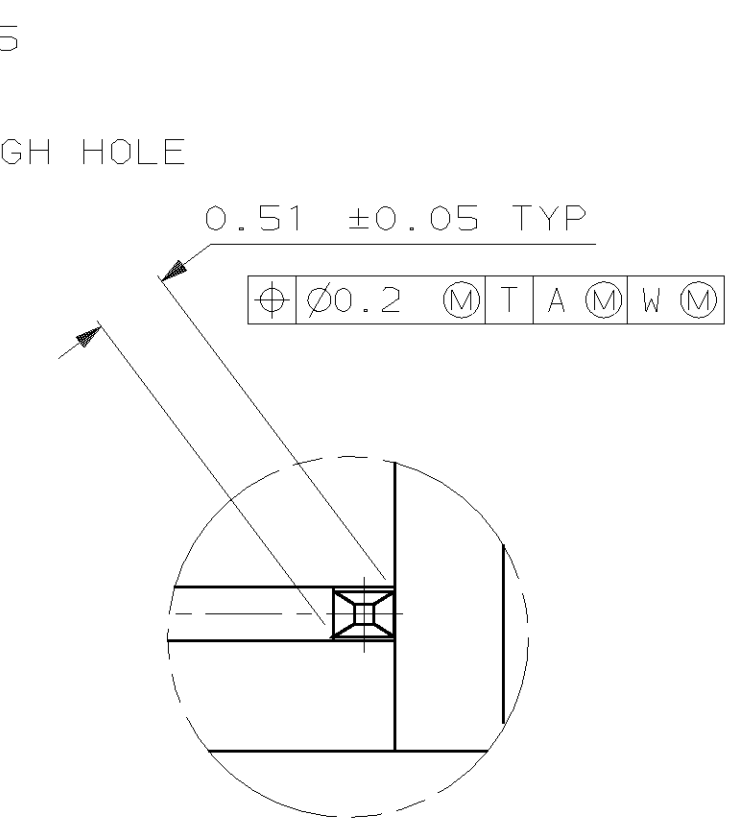


SEE DETAIL Z



RECOMMENDED CIRCUIT PATTERN  
 PER IPC-D300 TYPE II, CLASS C  
 (COMPONENT SIDE)

- ① HOUSING MATERIAL: LIQUID CRYSTAL POLYMER.
- ② CONTACT MATERIAL: PHOSPHOR-BRONZE.
- ③ CONTACT FINISH:  
 ON MATING SURFACES-  
 FLASH GOLD PER AMP INCORPORATED SPECIFICATION, OVER  
 0.0008 MIN. PALLADIUM-NICKEL PER AMP INCORPORATED SPECIFICATION, OVER  
 0.0013 MIN. NICKEL  
 ON LEADS-  
 0.004 MIN. TIN-LEAD, OVER  
 0.0013 MIN. NICKEL  
 SURFACE CONDITIONER PER AMP SPECIFICATION 112-1002 (ENTIRE CONTACT AFTER PLATING).
- ④ CONTACT FINISH:  
 UNDERPLATE (ENTIRE CONTACT):  
 0.0013 MIN NICKEL.  
 ON MATING SURFACES:  
 0.0008 NICKEL OR COBALT HARDENED GOLD  
 PER AMP SPECIFICATION, OVER UNDERPLATE.  
 ON LEADS:  
 0.004 MIN TIN-LEAD, OVER UNDERPLATE.  
 SURFACE CONDITIONER PER AMP SPECIFICATION  
 112-1002 (ENTIRE CONTACT) AFTER PLATING.



DETAIL Z  
 SCALE 20:1

10	5	6	1	11.88	④	8	536613-1
E	D	C	B	A	FINISH	NO OF POSN	PART NUMBER

DO NOT SCALE PRINT. UNLESS SPECIFIED DIMENSIONS IN MILLIMETERS TOLERANCES ON: 2 PLC DEC ± 0.13 3 PLC DEC ± - ANGLES ± -		DR 09/17/92 D.R.BENDER CHK 01/25/93 S.HEADER APPD 01/25/93 D.R.BAECHTLE APPD 01/25/93 G.PREPUTNICK		AMP Incorporated Harrisburg, PA 17105-3608	
MATERIAL		PRODUCT SPEC		NAME	
FINISH		APPLICATION SPEC		Z-PACK 2mm FB, POWER MODULE, RCPT. ASS'Y. 4 ROW, 3.53 mm LEAD LENGTH	
WEIGHT		SIZE	CAGE CODE	DRAWING NO	
		D	00779	C-536613	
		SCALE	4:1	SHEET	1 OF 1

THIS DRAWING IS A CONTROLLED DOCUMENT FOR AMP INCORPORATED. IT IS SUBJECT TO CHANGE AND THE CONTROLLING ENGINEERING ORGANIZATION SHOULD BE CONTACTED FOR THE LATEST REVISION.