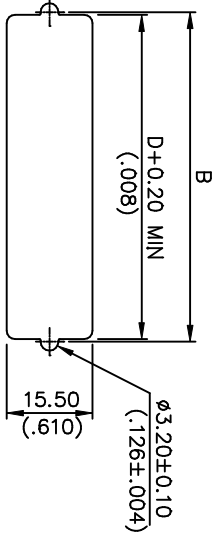
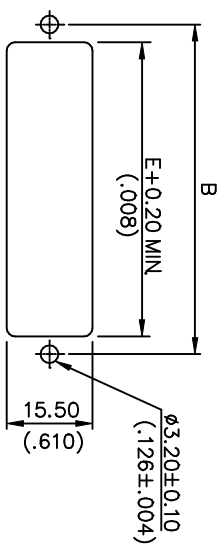
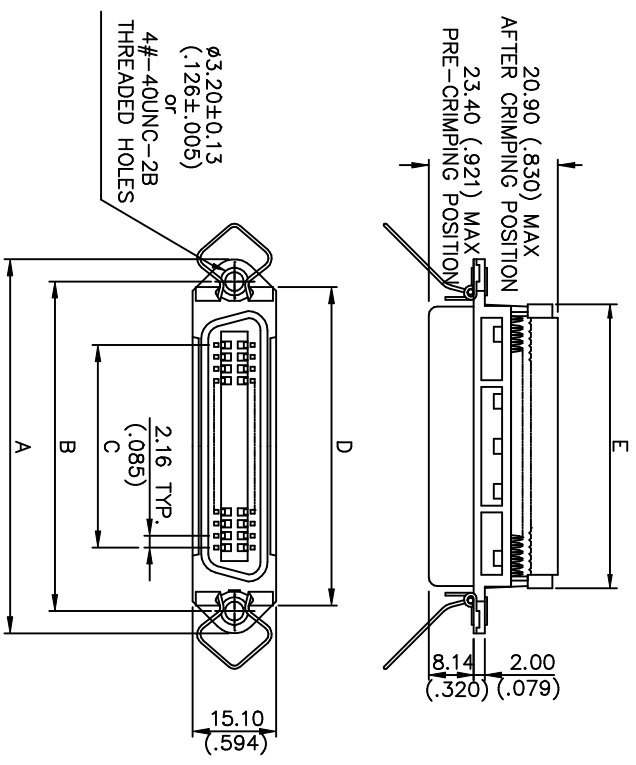


REV.	ZONE	LTR	DESCRIPTION	DATE	REVISER	APPD
4		▲	依ECR新增客戶欄及註解	07/24-'01	Liu,ZK	

SPECIFICATIONS:

- Current rating : 1A : AWG28/1, 2A : AWG26
- Insulation resistance : $\geq 1000M\Omega$
- Dielectric withstanding voltage : 500V, at sea level
- Operating temperature : $-55^{\circ}C \sim 105^{\circ}C$ (limited by cable)
- Contact resistance $\leq 20m\Omega$
- Dielectric material : PBT & glass reinforced, UL 94V-0
- Contact material : phosphor bronze
- Contact plating : gold over nickel
- Wire size : AWG26 & AWG28 stranded, 1.27mm conductor center flat cable



RECOMMEND FRONT MOUNT PANEL

RECOMMEND REAR MOUNT PANEL

ORDERING INFORMATION

SF 40 360 M -1 0 P S - C ▲
 (1) (2) (3) (4) (5) (6) (7) (8) (9)

1. Series Number :

- SF : I.D.C. ribbon connector
- 2. Contact & Connecting types :
 - 10 : Plug, rack & panel connecting type
 - 20 : Socket, rack & panel connecting type
 - 30 : Plug, cable to panel connecting type
 - 40 : Socket, cable to panel connecting type

6. Contact Finish :

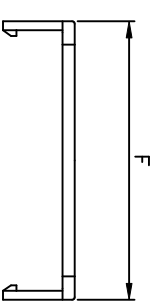
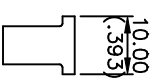
- 0 : Selected gold flash over nickel
- 2 : 15μ" Selected gold plated over nickel
- 3 : 30μ" Selected gold plated over nickel

7. Strain Relief:

- N : Without strain relief
- P : Plastic strain relief

8. Mounting Types :

- S : Standard Through holes
- R : With rivet through holes
- T : With #4-40UNC threaded insert
- N : Without mounting holes (Bail mounting type)
- M : With M3*0.5 threaded holes
- W : With M2.6*0.45 threaded holes
- A : With $\phi 3.20$ rivet
- B : With 2#-56UNC threaded holes



STRAIN RELIEF

	F	E	D	C	B	A
53.70 (2.114)	51.50 (2.027)	58.80 (2.315)	36.72 (1.446)	59.74 (2.352)	67.80 (2.669)	SF40360M
±0.25(.010)	±0.25(.010)	±0.25(.010)	±0.13(.005)	±0.13(.005)	±0.25(.010)	

PART NO.



MATERIAL	TOLERANCE UNSPECIFIED	NAME	SCALE	UNIT
	±0.25	SF 40 SERIES	1 : 1	mm(inch)
FINISH		RIBBON CONN.-RECEPTACLE WITH METAL FRONT SHELL		

DESIGNER	CHECKED	APPROVED	DRAWING NO.	REV.
Liu,Zk	Peter7/27/01	James7/27/01	R-S105F-F	4