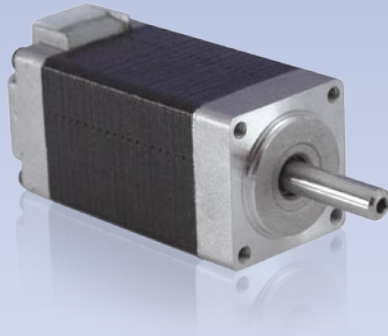


208



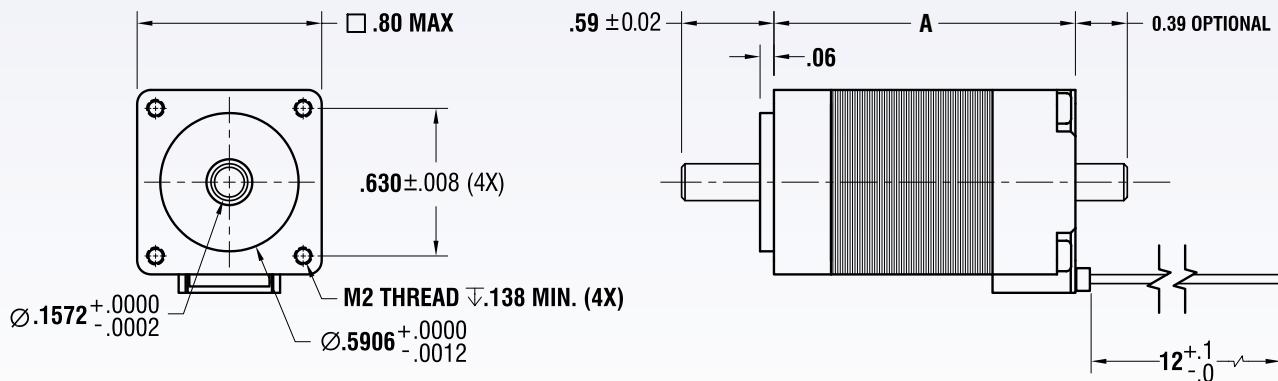
- High Torque in a Compact Size
- NEMA Size 8 Mountings
- (No Custom Windings Available for the Size 8)

■ SPECIFICATIONS

BIPOLAR	Dimension "A" Max	Model #	Amps/Phase	Torque oz-in	Torque N-m	Resistance Ohm/Phase	Inductance mH/Phase	Inertia oz-in ²	Weight Lbs.	Number of Leads
	1.3" 33 mm	208-13-01	0.60	3.0	0.02	6.5	1.7	0.01	0.13	4
	1.7" 43 mm	208-17-01	0.80	4.0	0.03	5.4	1.5	0.01	0.18	4

- Please complete our application data sheet for different windings.
- Power supply voltage can be any value as long as the driver output current is controlled at the motor's rated current.
- Call Lin Engineering for additional Bipolar torque curves.
- Performance, use, and appearance specifications of the products listed here are subject to change without notice.
- For operating temperatures, see page 94.

■ DIMENSIONS (inches)

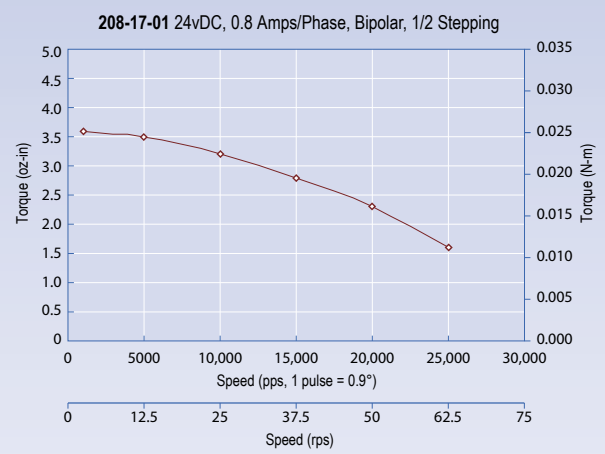
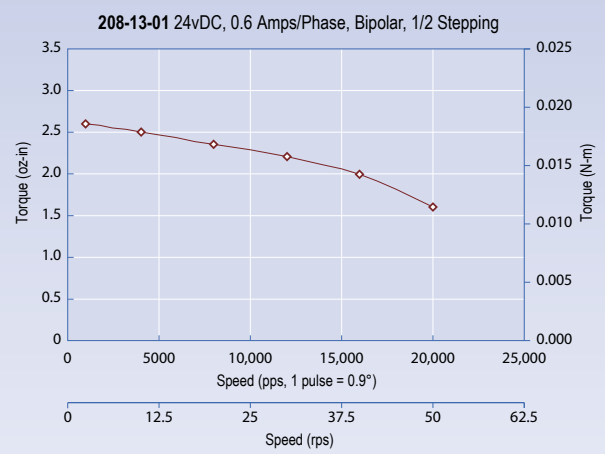


DID YOU KNOW...

A motor operating under full-stepping yields more torque than operating at microstepping.



TORQUE CURVES



DID YOU KNOW...

The quickest way to solve your step motor problems is to see the specialists
 – Lin Engineering