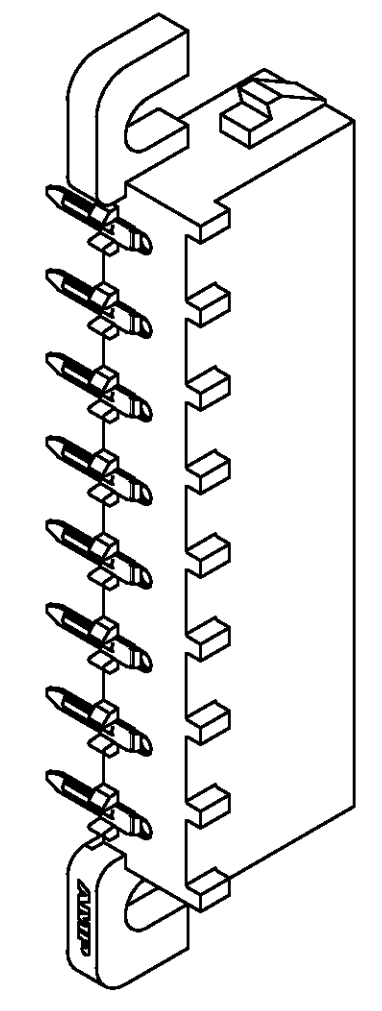
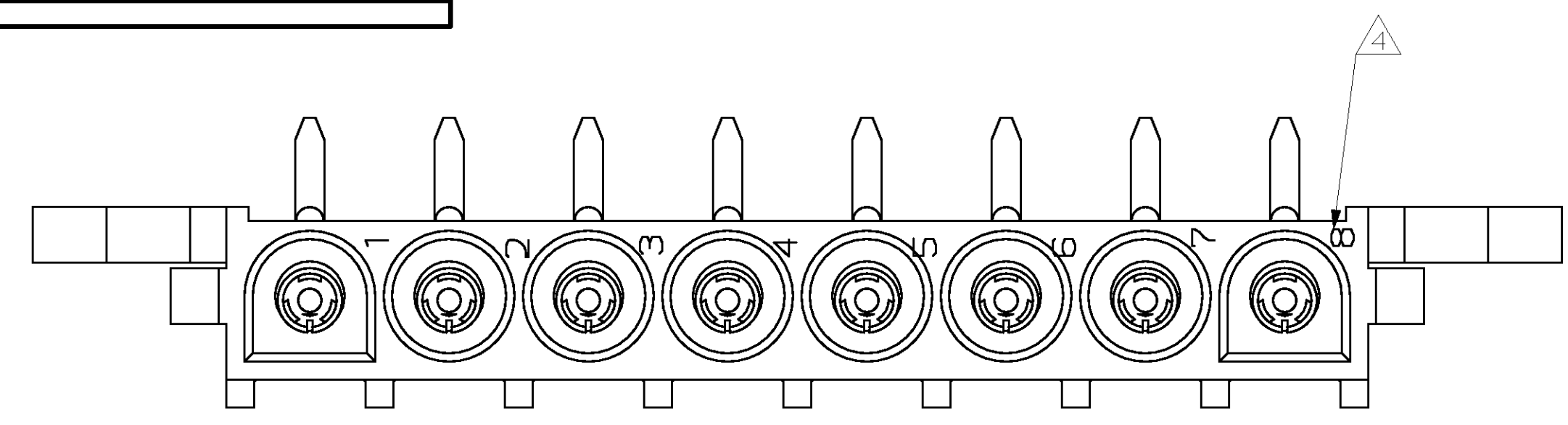
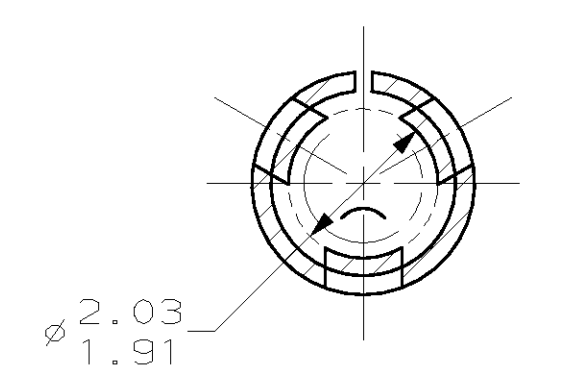
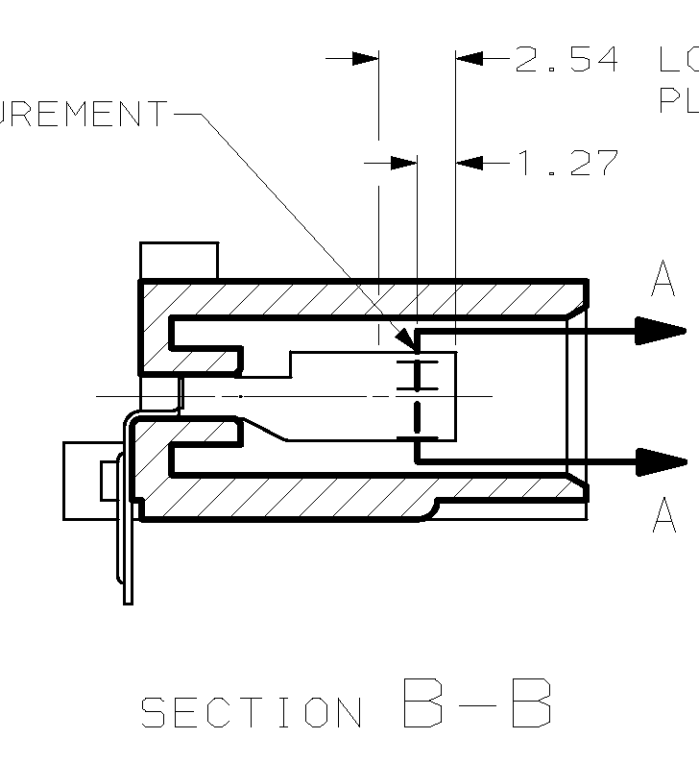
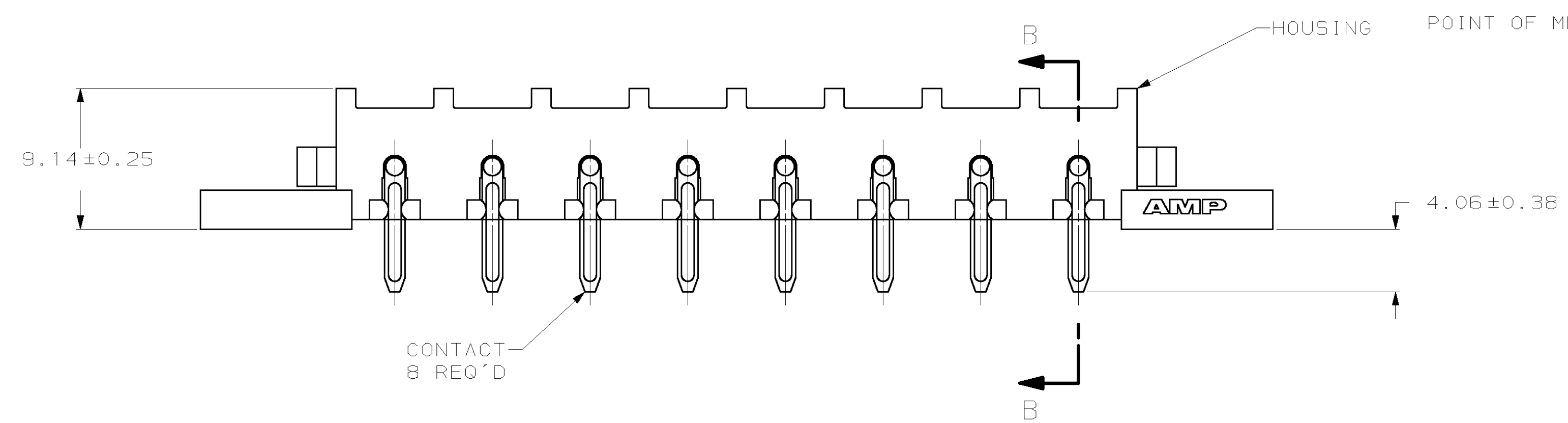
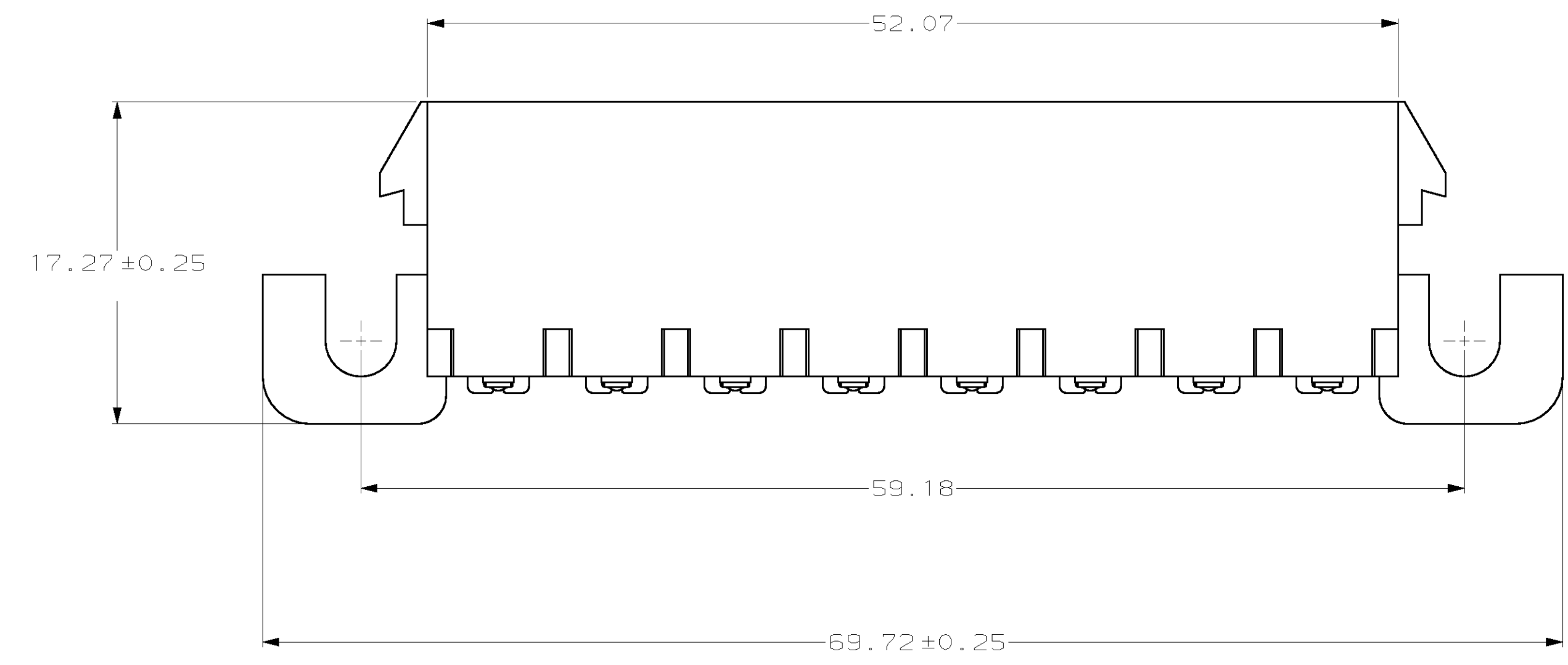


LOC	REV	DATE	DESCRIPTION	DATE	BY	APPV
CM	53					
C	REV & REDWN	PER EC	061B-0126-98	5-05-98	BL	RS

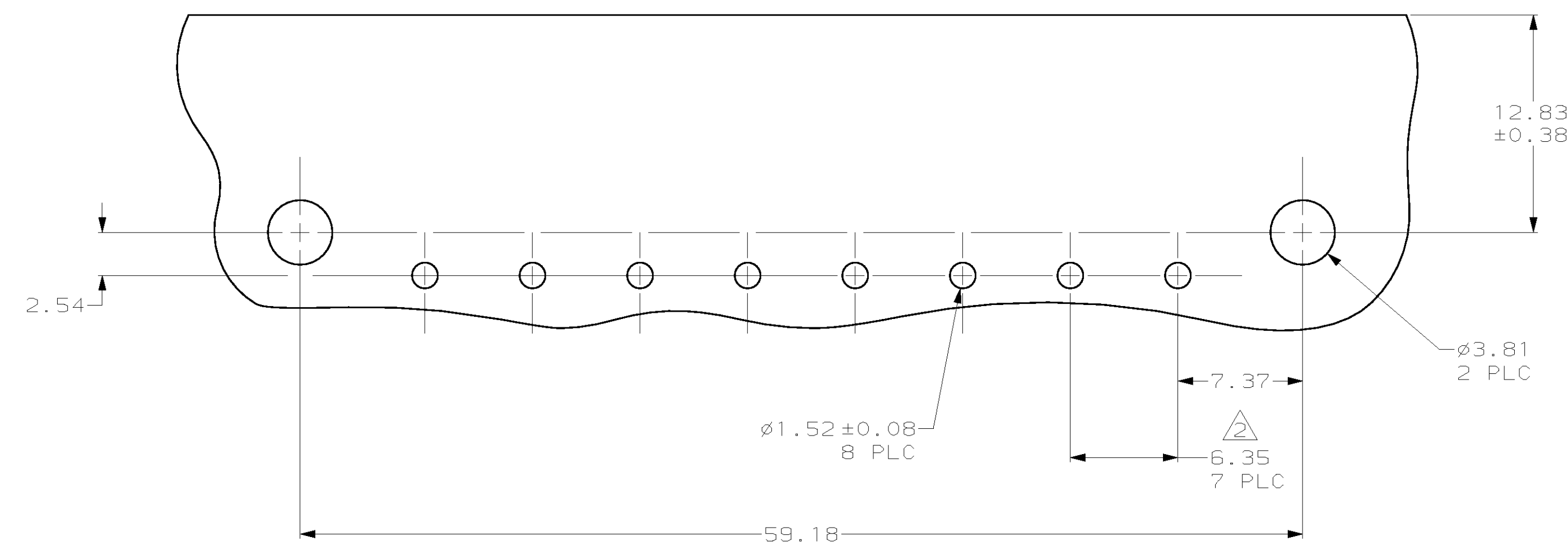


3-DIMENSIONAL MODEL  
NTS

1. PARTS COMPLY WITH AMP SOLDERABILITY SPECIFICATION 109-11-5.
2. TOLERANCE NON-CUMULATIVE.
3. 0.00076 GOLD OVER 0.00127 MIN NICKEL WITH MATTE TIN ON SOLDER TAIL.
4. CIRCUIT IDENTIFICATION CHARACTERS ARE ADJACENT TO THE INDICATED CAVITIES, BUT LOCATION AND ORIENTATION MAY DIFFER FROM PRINT.



SECTION A-A  
SCALE 10:1



RECOMMENDED MOUNTING HOLE PATTERN  
FOR 1.57 THICK P.C. BOARD

MM	IN	MM	IN
2.03	.080	69.72	2.745
1.91	.075	59.18	2.330
1.57	.062	52.07	2.050
1.52	.060	17.27	.680
1.27	.050	12.83	.505
0.38	.015	9.14	.360
0.25	.010	7.37	.290
0.13	.005	6.35	.250
0.08	.003	4.06	.160
0.00127	.000050	3.81	.150
0.00076	.000030	2.54	.100
MM	IN	MM	IN

CONVERSION TABLE



PH BRZ GOLD	NYLON, UL94V-0	643236-2
PH BRZ TIN	NYLON, UL94V-0	643236-1
CONTACT	HOUSING	PART NO
<b>AMP</b> AMP Incorporated Harrisburg, PA 17105-3608		
SOCKET HEADER ASSEMBLY, RIGHT ANGLE MOUNT, 8 POSITION, UNIVERSAL MATE-N-LOK™		
SIZE	CAGE CODE	DRAWING NO
A1	00779	C-643236
CUSTOMER DRAWING		
SCALE	SHEET	REV
4:1	11	C