

MICRO SWITCH

FREEMONT ILLINOIS, U.S.A
A DIVISION OF HONEYWELL
FED. MFG. CODE 91929

SWITCH - BASIC

CATALOG LISTING

BZ-2RW8225-A2-S

BZ-2RW8225-A2-S

PAGE 1 OF 1

REPLACES

RELEASE NO. PR-6746

DRAWING NUMBER

6

ISSUE

CHECK

REVISIONS

A	CO-70184-F	G J W	31 JAN 92
B	CO-73287-J	J A L	22 NOV 93
C	CO-77588	K D R	29 MAR 94
D	CO-84680-C	CSL	27 AUG 97
E	C093346	DLT	11 SEP 98

CHECK

9 JAN 78

GCH

9 JAN 78

CHECK

9 JAN 78

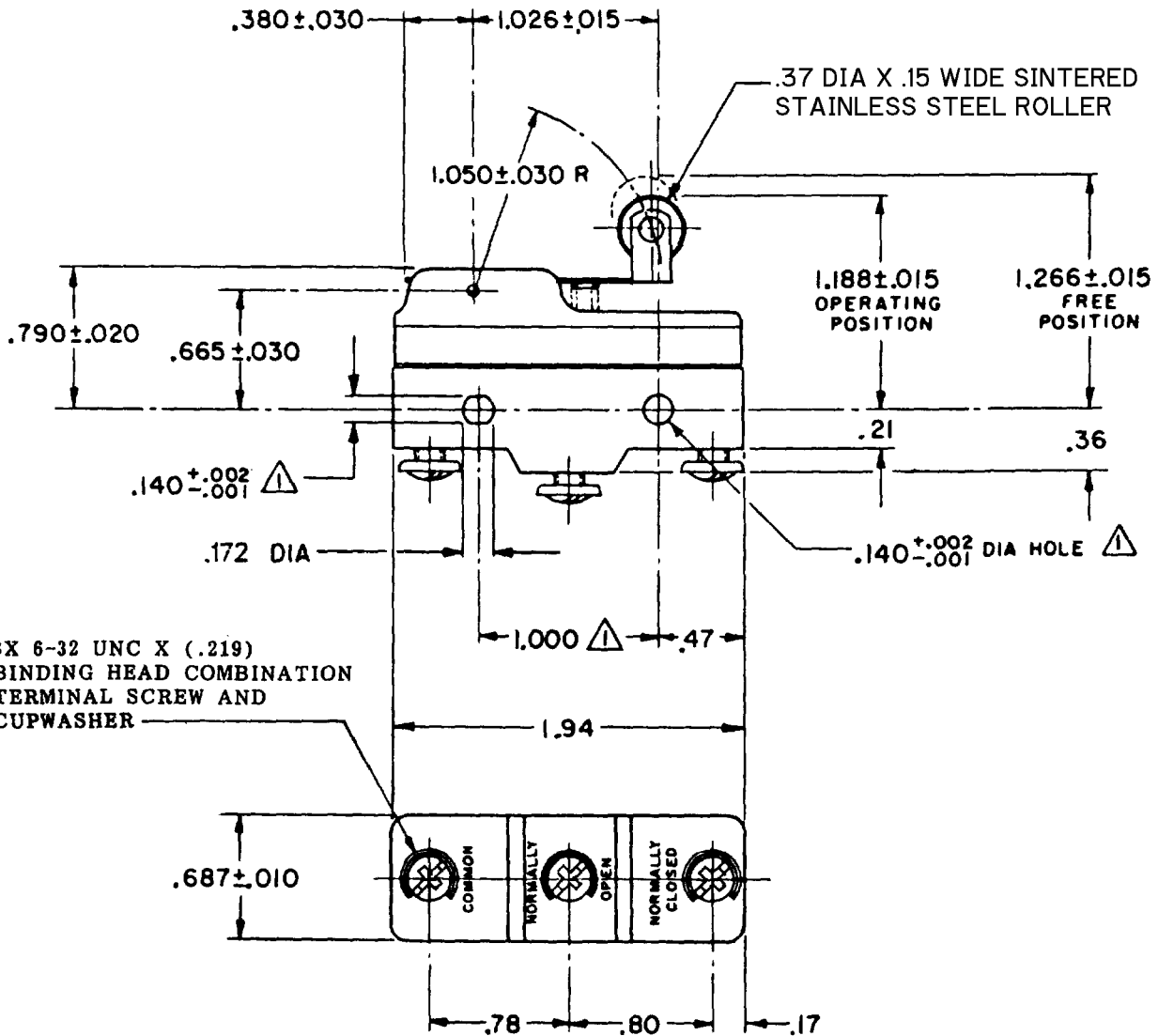
CHECK

9 JAN 78

FORMTEK

DRAWN

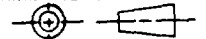
T M M 5 JAN 78



NOTE
 MOUNTING HOLES WILL ACCEPT PINS OR SCREWS OF .139 MAX DIA ON 1.000±.002 CENTERS

THIS DRAWING COVERS A PROPRIETARY ITEM AND IS THE PROPERTY OF MICRO SWITCH, A DIVISION OF HONEYWELL. THIS DRAWING IS NOT TO BE COPIED OR USED WITHOUT THE APPROVAL OF MICRO SWITCH.

THIRD ANGLE PROJECTION



CHARACTERISTICS

OPERATING FORCE — — — 6 OZ MAX
 RELEASE FORCE — — — 1 1/2 OZ MIN
 DIFFERENTIAL TRAVEL — — .003-.020
 OVERTRAVEL — — — — .094 MIN

ELECTRICAL DATA

CONTACT ARRANGEMENT
 S P D T
 L96
 15A 125, 250 OR 480 VAC
 1/8HP 125 VAC, 1/4HP 250 VAC
 1/2A 125 VDC, 1/4A 250 VDC

L288
 L299
 L306

 16A 250V ~ T85 5E4

SCALE FULL

DO NOT SCALE PRINT

TOLERANCES

APPLY TO DESIGN UNITS. CONVERSIONS ARE ONLY FOR REFERENCE. UNLESS NOTED, TOLERANCES ARE ±

	DIM. IN	TOL. mm/in	DIM. IN	TOL. mm/in
NO PLACES	X	1/64	X X	0.01/02
ONE PLACE	X, X	0.001/010	X X X	0.001/010
TWO PLACES	X, XX	0.0001/0008	X X X X	0.0001/0008
THREE PLACES	X, XXX		X X X X X	

DESIGN UNITS SI METRIC US CUSTOMARY

WEIGHT .076 LB