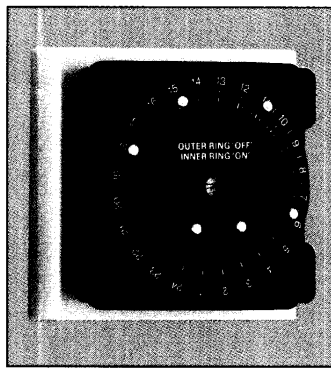
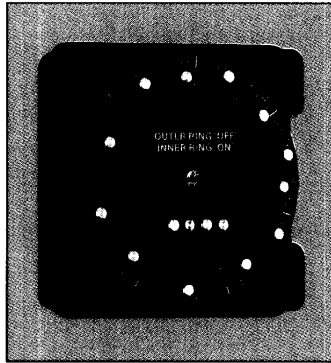
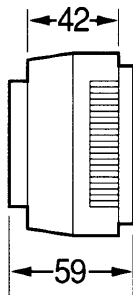
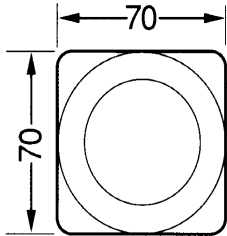


TS204S



TS305S



TS225S

# GENERAL PURPOSE

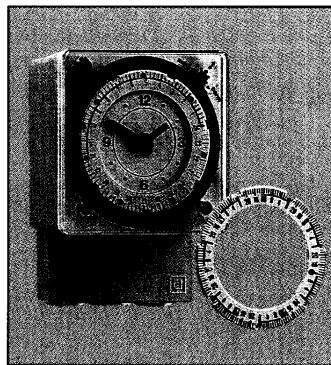
- ◆ Synchronous motor driven
- ◆ Switching indication
- ◆ Time switch setting by pin insert in setting ring
- ◆ Manual override
- ◆ Supplied complete with mounting box and screws for installation to BS flush and surface switch boxes.

ORDER REF	TIME PERIOD	SETTING INTERVAL	MINIMUM SWITCHING PERIOD	IND MOTOR CONNECTION	CONTACT RATING RESISTIVE AT 240V AC	SETTING PINS
TS204S	24 HR	15 MIN	30 MIN	YES	13A	6 (374.135)
TS305S	24 HR	15 MIN	30 MIN	NO	13A	6 (374.135)
TS225S	7 DAY	1 HR	4 HR	NO	13A	14 (374.135)

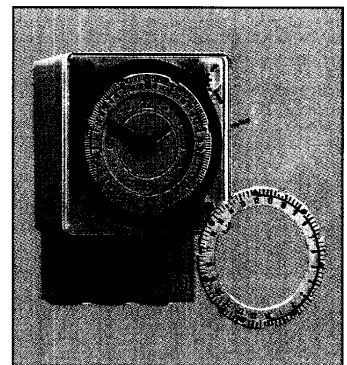
## ELECTRO MECHANICAL

72 x 72mm PLUG IN BASE

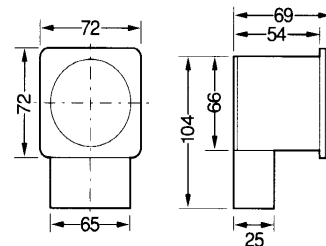
- ◆ Synchronous motor drive or quartz motor drive with approximately 150 hour reserve
- ◆ Changeover for 7 day and 24 hour programmes
- ◆ Time display
- ◆ Switch position indicator
- ◆ Manual override/permanent ON/OFF
- ◆ Panel mounting kit included.



E269H/E269G



E289H/E289G



For switches with changeover contacts ask for product codes:

SYN269H 24 hr & 7 day (1 x 10 amp)    SUL289H 24 hr & 7 day Quartz (1 x 10 amp)  
 SYN269G 24 hr & 7 day (2 x 6 amp)    SUL289G 24 hr & 7 day Quartz (2 x 6 amp)

ORDER REF	DIALS	POWER RESERVE	SWITCH PERIOD	MINIMUM SWITCHING	CONTACT RATING RESISTIVE AT 240V AC	SWITCHING TAPPETS
E269H	24 HR/ 7 DAY	—	5 MIN/ 30 MIN	20 MIN/ 2 HR	16 A (2 x 16 A)	16 RED (3.43.236) 17 16 BLUE (3.43.237) 17 WHITE (3.43.235) 17
E289H	24 HR/ 7 DAY	150 HR	5 MIN/ 30 MIN	20 MIN/ 2 HR	16 A	16 RED (3.43.236) 17