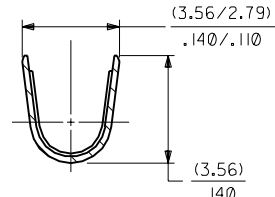
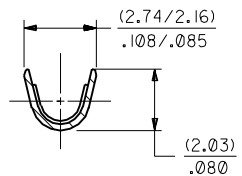
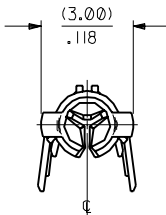
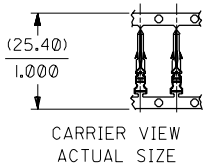


PART NO.	ENG. NO.	
02-06-2201	1786-(90)I	
02-06-2202	1786-(90)IL	
02-06-6205	1786-(59)I	<b>OBSOLETE</b>
02-06-6206	1786-(59)IL	<b>OBSOLETE</b>
02-06-6201	1786-(550)	
02-06-6202	1786-(550)L	

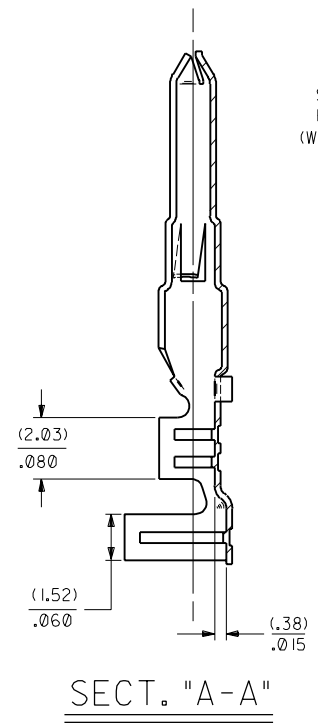
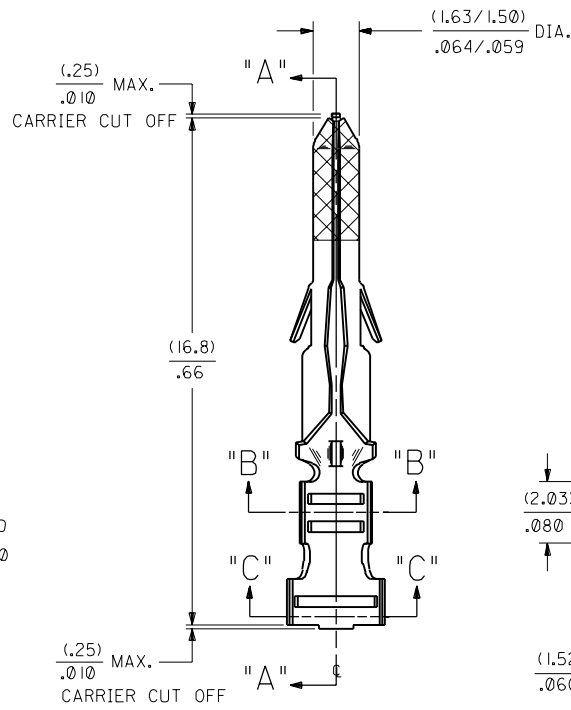


SECT. "B-B"

SECT. "C-C"

SCALE: 10X

SCALE: 10X



SELECT GOLD  
PLATE DEPTH  
(WHEN SPECIFIED)

**LEGEND**

1786-(\*\*\*\*)\*

P=PREPLATE      FORM  
BLANK=POSTPLATE      BLANK=CHAIN  
FINISH CODE      L=LOOSE

**NOTES:**  
1. TERMINAL FOR USE WITH (1.57)/.062 DIA. SERIES HOUSINGS AND WILL ACCEPT 18 THRU 24 AWG WIRE WITH (1.52/3.05)/.060/.120 INSULATION DIA.  
2. THIS PART CONFORMS TO PRODUCT SPEC. 02-06.

**FINISH CODES:**  
901 HOT TIN DIP (.00005I)/.000020 MIN.  
591 SELECT GOLD PLATE (.00127)/.000050 MIN. IN CONTACT AREA, OVER (.00127)/.000050 MIN. NICKEL OVERALL WITH (.00025)/.000010 MAX. GOLD FLASH OVERALL.  
550 SELECT GOLD PLATE (.00038)/.000015 MIN. IN CONTACT AREA, OVER (.00076)/.000030 MIN. NICKEL OVERALL WITH (.00025)/.000010 MAX. GOLD FLASH OVERALL.

**MATERIAL NOTE:**  
PHOSPHOR BRONZE, ALLOY #C51000,  
(.20)/.008 THICK, SPRING TEMPER

AN	OBSOLETE P/N UCR2002-0270 COMERCI 01/9/26
AMI	OBSOLETE -1550I & -1550IL ECR U6 0358 CXC 9/15/95 RW
AM	REV. & REDRAWN PER ECR 10312 GEP 9-17-86 RW

DIMENSIONS SHOWN (METRIC) INCH		REVISIONS	
UNLESS OTHERWISE SPECIFIED TOLERANCES ANGULAR ± 1/2°		MFG. SH.	REV.
TITLE		LTR.	REVISIONS
3 PLACE ± .010		REVISE ONLY ON CAD SYSTEM	
2 PLACE ± .014 ± 0.25		CRIMP TERMINAL, MALE (1.57)/.062 DIA., PHOS. BRONZE FOR 18 THRU 24 GA. WIRE	
1 PLACE --- ± 0.35		MOLEX INCORPORATED U.S.A. SHEET NO. DATE 1 OF 1 9/17/87	
DRAFT WHERE APPLICABLE MUST REMAIN WITHIN DIMENSIONS		PART NO. DRWG. NO. SD-1786-*	
DRAWN BY: GEP CHK'D BY: RW		FILE NAME	
APP'D BY: RAS SCALE: 8:1		SD1786X1	
		THIS DRAWING CONTAINS INFORMATION THAT IS PROPRIETARY TO MOLEX INC. AND SHOULD NOT BE USED WITHOUT WRITTEN PERMISSION.	