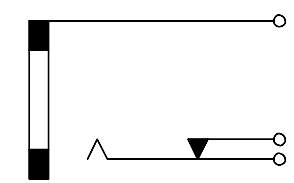
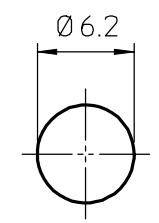
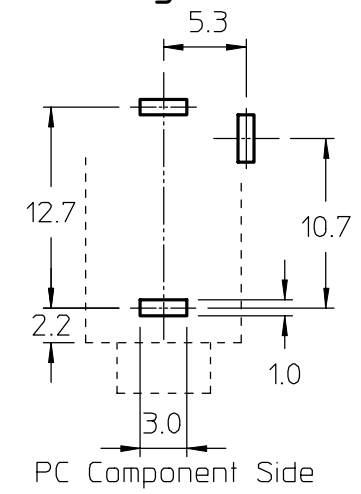


Schematic Diagram



Mounting Details



Maximum Panel Thickness 1.4mm

Specification:

Dielectric Withstand	500V ac for 1 minute
Max. Working Current	0.5A @ 34V ac/dc
Initial Contact Resistance	30mΩ max.
Insulation Resistance	100MΩ @ 500V dc
Operating Temperature	-20° to +70°C
Endurance	5,000 insertions

Materials:

Body Moulding	PC
Tip Fixed Contact/Terminal	Silver plated Brass
Tip Spring Contact/Terminal	Silver plated Copper Alloy
Body Terminal	Silver plated Brass
Mounting Nut	Nickel plated Brass
Mounting Bush	Nickel plated Brass

Compatible With:

Schurter Plugs 4832.1200, 4832.1210 & 4832.1220

ISS.	MOD. & DATE			TOLERANCES	MATL	SCALE	TITLE
				X.X +/- 0.4			
1	23.11.01			X.XX +/- 0.1	FINISH	DO NOT SCALE DRAWING	DRG No
				UNLESS STATED OTHERWISE		See above	
				DIMS IN MM	SCHURTER LTD.	SHT. 1 OF 1 SHTS.	

BOGNOR REGIS, UNITED KINGDOM