

# Oxford Electrical Products Ltd

audio transformers (high performance)

0800 316 6060

[get an online quote](#)

[get a catalogue delivered](#)

[download entire catalogue](#)

[can't find what you looking for ??..](#)

[back to catalogue index](#)

[home](#)

## PCB MOUNTING MINIATURE

A range of high quality, industry standard, audio frequency transformers, enclosed in ABS cases.

Specifically designed for direct printed circuit board mounting on a 0.1 inch grid.

Each transformer is constructed with dual windings on the primary and secondary providing a wide range of impedance matching ratios to suit many input, interstage and output applications.

A foil screen is provided between the primary and secondary windings and the transformers are rated at 100mW at 300 Hz and 1mW at 30 Hz (less than 1% T.H.D.)

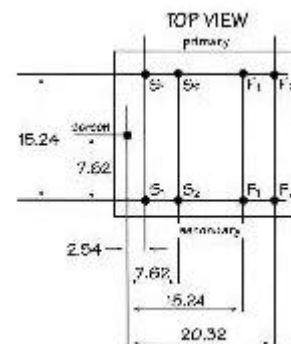
An optional Mu-metal screening can, is available if required. P/N A262CAN)



Transformer W28 H22 D23mm



Mumetal Can W29 H23 D24mm



Ratio	6.3+6.3:1+1		1+1:2+2		1+1:6.45+6.45	
	PRI	SEC	PRI	SEC	PRI	SEC
Part No.	<b>A262A1E</b>		<b>A262A2E</b>		<b>A262A3E</b>	
Impedance	150	3.75+	150+	600+	150+	6.25+
Individual windings	150 $\Omega$	3.75 $\Omega$	150 $\Omega$	600 $\Omega$	150 $\Omega$	6.25k $\Omega$
Series Connected	600 $\Omega$ C.T.	15 $\Omega$ C.T.	600 $\Omega$ C.T.	2.4k $\Omega$ C.T.	600 $\Omega$ C.T.	25k $\Omega$ C.T.
Parallel Connected	150 $\Omega$	3.75 $\Omega$	150 $\Omega$	600 $\Omega$	150 $\Omega$	6.25 $\Omega$
d c Resistance	10+10 $\Omega$	0.36+0.36 $\Omega$	10+10 $\Omega$	55+55 $\Omega$	9.6+9.6 $\Omega$	535+605 $\Omega$
Frequency Range (+1.5db)	<b>30Hz - 30kHz</b>		<b>30Hz - 35kHz</b>		<b>30Hz - 25kHz</b>	
Proof test voltage : primary to secondary and windings to screen	<b>1 kV</b>		<b>1 kV</b>		<b>1 kV</b>	

Ratio	1+1:1+1		1+1:1+1	
	PRI	SEC	PRI	SEC
Part No.	<b>A262A6E</b>		<b>A262A7E</b>	
Impedance	150+	150+	600+	600+
Individual windings	150 $\Omega$	150 $\Omega$	600 $\Omega$	600 $\Omega$
Series Connected	600 $\Omega$ C.T.	600 $\Omega$ C.T.	2.4k $\Omega$ C.T.	2.4k $\Omega$ C.T.
Parallel Connected	150 $\Omega$	150 $\Omega$	600 $\Omega$	600 $\Omega$
d c Resistance	15+15 $\Omega$	20+20 $\Omega$	42+42 $\Omega$	58+58 $\Omega$
Frequency Range (+1.5db)	<b>30Hz - 30kHz</b>		<b>30Hz - 35kHz</b>	
Proof test voltage : primary to secondary and windings to screen	<b>1 kV</b>		<b>1 kV</b>	

This range of transformers is also available with the Mu metal screening can fitted and may be ordered by replacing the suffix 'E' with the suffix 'C'