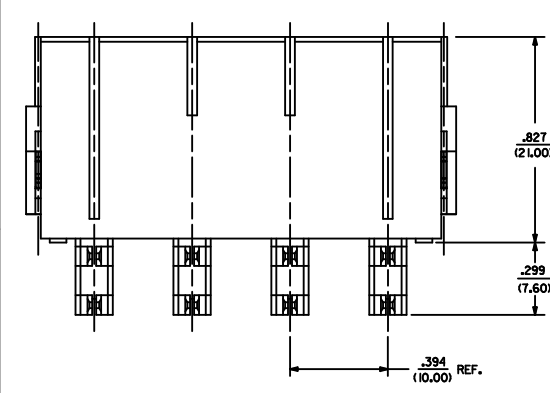
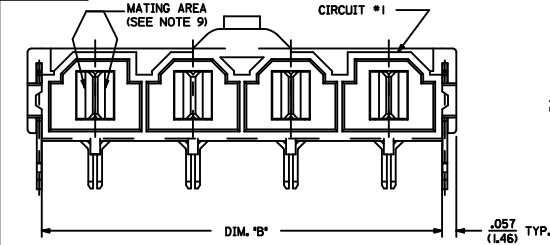


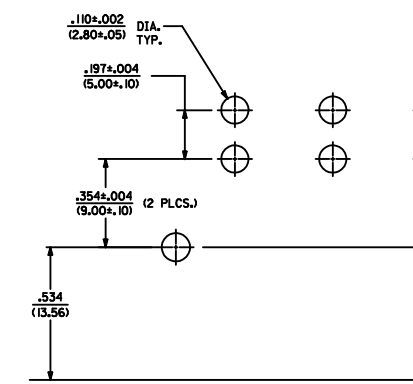
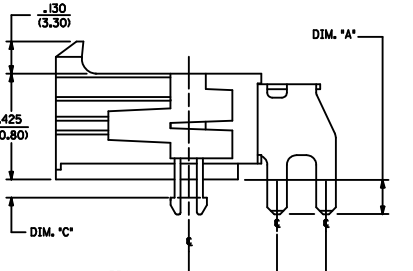
ITEM NUMBER	CKT. SIZE	DIM. 'A'	DIM. 'B'	DIM. 'C'	TERMINAL PLATING
42820-2212	2	.138/(3.50)	.823/(20.90)	.071/(1.80)	
42820-2219	2	.136/(3.50)	.823/(20.90)	.071/(1.80)	
42820-2222	2	.201/(5.10)	.823/(20.90)	.102/(2.60)	
42820-2232	2	.201/(5.10)	.823/(20.90)	.134/(3.40)	
42820-2239	2	.201/(5.10)	.823/(20.90)	.134/(3.40)	
42820-2242	2	.327/(8.30)	.823/(20.90)	.259/(6.58)	
42820-3212	3	.138/(3.50)	L217/(30.90)	.071/(1.80)	
42820-3222	3	.201/(5.10)	L217/(30.90)	.102/(2.60)	
42820-3229	3	.201/(5.10)	L217/(30.90)	.102/(2.60)	
42820-3232	3	.201/(5.10)	L217/(30.90)	.134/(3.40)	
42820-3242	3	.327/(8.30)	L217/(30.90)	.259/(6.58)	
42820-4212	4	.138/(3.50)	L610/(40.90)	.071/(1.80)	OVERALL BRIGHT TIN
42820-4222	4	.201/(5.10)	L610/(40.90)	.102/(2.60)	
42820-4232	4	.201/(5.10)	L610/(40.90)	.134/(3.40)	
42820-4242	4	.327/(8.30)	L610/(40.90)	.259/(6.58)	
42820-5212	5	.138/(3.50)	2,004/(50.90)	.071/(1.80)	
42820-5222	5	.201/(5.10)	2,004/(50.90)	.102/(2.60)	
42820-5232	5	.201/(5.10)	2,004/(50.90)	.134/(3.40)	
42820-5242	5	.327/(8.30)	2,004/(50.90)	.259/(6.58)	
42820-6212	6	.138/(3.50)	2,389/(60.90)	.071/(1.80)	
42820-6222	6	.201/(5.10)	2,389/(60.90)	.102/(2.60)	
42820-6229	6	.201/(5.10)	2,389/(60.90)	.102/(2.60)	
42820-6232	6	.201/(5.10)	2,389/(60.90)	.134/(3.40)	
42820-6242	6	.327/(8.30)	2,389/(60.90)	.259/(6.58)	
42820-2332	2	.201/(5.10)	.823/(20.90)	N/A	
42820-2342	2	.327/(8.30)	.823/(20.90)	N/A	
42820-2213	2	.138/(3.50)	.823/(20.90)	.071/(1.80)	
42820-2223	2	.201/(5.10)	.823/(20.90)	.102/(2.60)	
42820-2233	2	.201/(5.10)	.823/(20.90)	.134/(3.40)	
42820-2243	2	.327/(8.30)	.823/(20.90)	.259/(6.58)	
42820-3213	3	.138/(3.50)	L217/(30.90)	.071/(1.80)	
42820-3228	3	.138/(3.50)	L217/(30.90)	.102/(2.60)	
42820-3223	3	.201/(5.10)	L217/(30.90)	.102/(2.60)	
42820-3233	3	.201/(5.10)	L217/(30.90)	.134/(3.40)	
42820-3243	3	.327/(8.30)	L217/(30.90)	.259/(6.58)	
42820-4213	4	.138/(3.50)	L610/(40.90)	.071/(1.80)	
42820-4223	4	.201/(5.10)	L610/(40.90)	.102/(2.60)	
42820-4233	4	.201/(5.10)	L610/(40.90)	.134/(3.40)	SELECT GOLD IN CONTACT AREA
42820-4243	4	.327/(8.30)	L610/(40.90)	.259/(6.58)	SELECT MATTE TIN ON SOLDER TAILS
42820-5213	5	.138/(3.50)	2,004/(50.90)	.071/(1.80)	
42820-5223	5	.201/(5.10)	2,004/(50.90)	.102/(2.60)	
42820-5233	5	.201/(5.10)	2,004/(50.90)	.134/(3.40)	
42820-5243	5	.327/(8.30)	2,004/(50.90)	.259/(6.58)	
42820-6213	6	.138/(3.50)	2,389/(60.90)	.071/(1.80)	
42820-6223	6	.201/(5.10)	2,389/(60.90)	.102/(2.60)	
42820-6233	6	.201/(5.10)	2,389/(60.90)	.134/(3.40)	
42820-6243	6	.327/(8.30)	2,389/(60.90)	.259/(6.58)	

SEE NOTE 11



LEGEND:

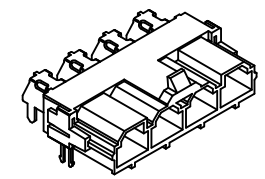
- A-42820 - CIRCUIT SIZE (2-6)
- MOUNTING OPTION
 - 1 = FLANGES (SEE DWG. SDA-42820-***)
 - 2 = RETENTION CLIP
 - 3 = NO RETENTION CLIP
- P.C. BOARD THICKNESS
 - 1 = .062/(1.57) NOMINAL
 - 2 = .093/(2.36) NOMINAL
 - 3 = .125/(3.18) NOMINAL
 - 4 = .250/(6.35) NOMINAL
- PLATING
 - 2 OR 9 = OVERALL BRIGHT TIN OVER NICKEL
 - 3 OR 8 = SELECT GOLD IN CONTACT AREA
SELECT MATTE TIN ON SOLDER TAILS OVER NICKEL



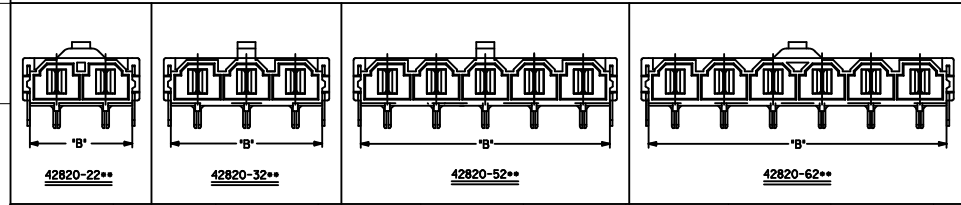
NOTES:

- 1) MATERIAL: HOUSING MATERIAL: 30% GLASS-FILLED NYLON 4/6, U.L. 94V-0, COLOR: BLACK. TERMINAL MATERIAL: ALLOY 151.
- 2) FINISH: 2 = .000100/(.00254) MIN. *TIN OVER .000050/(.00127) MIN. NICKEL. 3 = .000030/(.00076) MIN. SELECT GOLD IN CONTACT AREA. .000100/(.00254) MIN. SELECT *TIN ON SOLDER TAILS OVER .000050/(.00127) MIN. NICKEL. * THE PRIMARY SHIPPING CARTON WILL BE LABELED "COMPLIANT TO RoHS DIRECTIVE 2002/95/EC AND ELV ANNEX II OF DIRECTIVE 2000/63/EC". CARTONS WITHOUT THIS LABEL MAY CONTAIN PRODUCT WITH TIN-LEAD.
- 3) PRODUCT SPECIFICATION: PS-42816-001
- 4) PACKAGING INFORMATION SEE MOLEX PACKAGING SPEC. PK-42820-910
- 5) PART MATES WITH MOLEX RECEPTACLE *42816-***2 WITH TPA.
- 6) PART IS DESIGNED IN METRIC.
- 7) AN 'X' IN FRONT OF THE ITEM NUMBER INDICATES THE PART IS NOT TOOLED.
- 8) PARTS ARE NOT TO BE MATED OR UNMATED WHILE CIRCUITS ARE LIVE.
- 9) WHEN USING OVERALL TIN PLATED TERMINALS: FOR APPLICATIONS INVOLVING VIBRATION AND/OR THERMAL CYCLING, MOLEX STRONGLY RECOMMENDS THE USE OF NYE LUBRICANT (NYGEL 7600) ON THE MATING SURFACES OF THE TERMINAL.
- 10) PARTS CONFORMS TO CLASS 'B' REQUIREMENTS OF COSMETIC SPECIFICATION PS-45499-002
- 11) FOR TAPE AND REEL PACKAGING REFER TO PK-45986-004

RECOMMENDED P.C. BOARD PLATED-THRU HOLE LAYOUT (4 CKT. SHOWN FOR REF.)



HEADER WITH RT. ANGLE TERMINAL & CLIP ISO VIEW



CORRECT B DIMENSION EC NO. UCP2010-3272 DRAWN: AELHAG 2010/06/23 CHECKED BY: CHYD:JBELL 2010/06/24 APPROVED BY: FSMITH 2010/06/29 REV: G4	QUALITY SYMBOLS ▽=0 ▽=0	GENERAL TOLERANCES (UNLESS SPECIFIED) <table border="1"> <tr> <th></th> <th>mm</th> <th>INCH</th> </tr> <tr> <td>4 PLACES</td> <td>±.05</td> <td>±.002</td> </tr> <tr> <td>3 PLACES</td> <td>±.05</td> <td>±.002</td> </tr> <tr> <td>2 PLACES</td> <td>±.05</td> <td>±.002</td> </tr> <tr> <td>1 PLACE</td> <td>±.040</td> <td>±.0015</td> </tr> </table>		mm	INCH	4 PLACES	±.05	±.002	3 PLACES	±.05	±.002	2 PLACES	±.05	±.002	1 PLACE	±.040	±.0015	DIMENSION STYLE: IN/MM SCALE: 4:1 DESIGN UNITS: METRIC THIRD ANGLE PROJECTION
		mm	INCH															
	4 PLACES	±.05	±.002															
	3 PLACES	±.05	±.002															
2 PLACES	±.05	±.002																
1 PLACE	±.040	±.0015																
DRAFT WHERE APPLICABLE MUST REMAIN WITHIN DIMENSIONS	MATERIAL NO. SEE CHART DOCUMENT NO. SDA-42820-0002 SHEET NO. 1 OF 1	DRAWN BY: AELHAG 2010/06/23 CHECKED BY: JBELL 2010/06/24 APPROVED BY: FSMITH 2010/06/29 TITLE: RIGHT ANGLE HEADER ASSEMBLY MINIFIT SR. SERIES	MOLEX INCORPORATED															
THIS DRAWING CONTAINS INFORMATION THAT IS PROPRIETARY TO MOLEX INCORPORATED AND SHOULD NOT BE USED WITHOUT WRITTEN PERMISSION																		