

New!

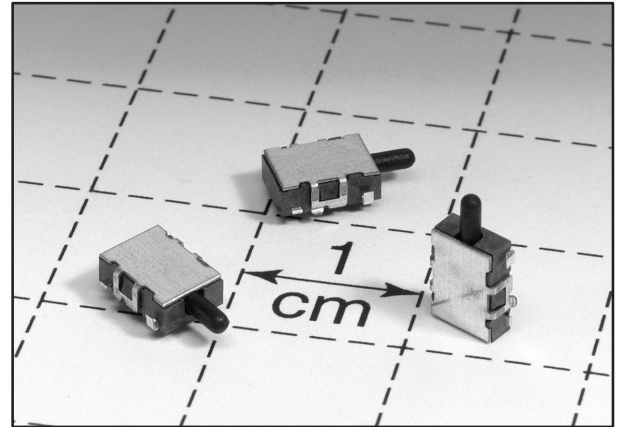
C&K SDS Series Micro Mini Surface Mount Detect Switches

Features/Benefits

- Low profile package sits just 2mm off PCB
- 2mm overtravel ideal for detector applications
- Low actuation force (100 grams max.)
- Pick & place compatible, available in tape & reel packaging

Typical Applications

- Detect the presence of a mechanical device
- Medical devices
- Consumer electronic devices



How To Order

Complete part numbers for SDS Series Switches are shown below.

Specifications

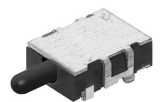
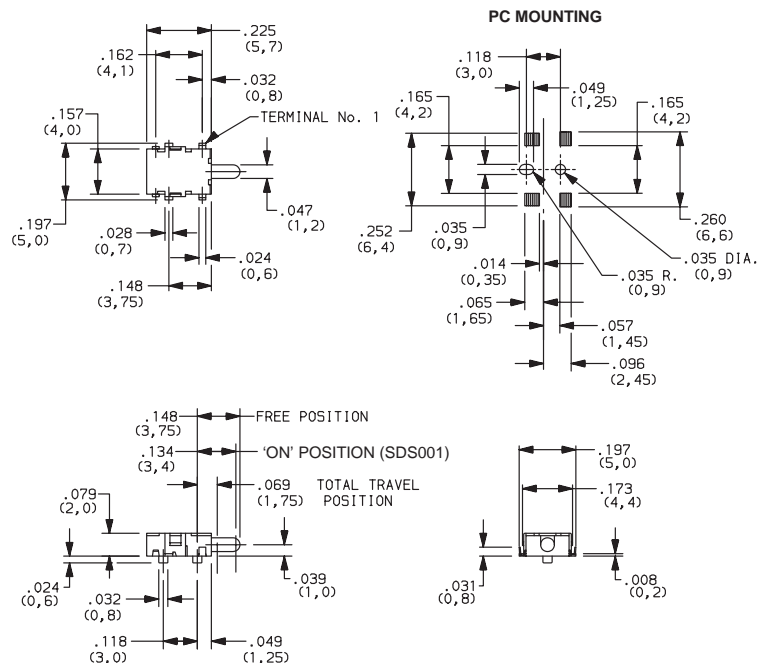
CONTACT RATING: 100 mA @ 12 VDC.
 MECHANICAL & ELECTRICAL LIFE: 50,000 cycles.
 CONTACT RESISTANCE: 100 milliohms max. initial.
 INSULATION RESISTANCE: 100 megohms min. @ 100 VDC.
 OPERATING TEMPERATURE: -20°C to +60°C.
 SOLDERABILITY: IR compatible, no wash. 240°C max.
 PACKAGING: Bulk or tape & reel (3000 per reel).

Materials

BASE: Glass filled LCP (UL 94V-0).
 ACTUATOR: Polyamide PAG30 (UL94V-0).
 SURFACE PLATE: Nickel silver.
 MOVABLE CONTACT: Phosphor bronze, silver clad.
 TERMINALS: Phosphor bronze, silver plated.

NOTE: Specifications and materials listed above are for switches with standard options. For information on specific and custom switches, consult Customer Service Center.

PART NUMBER	PACKAGING	TIMING
SDS001	Bulk	
SDS001R	Tape & Reel	
SDS002	Bulk	
SDS002R	Tape & Reel	



**SDS001
SPDT**