

**RoHS Compliant**

REV.	ZONE	LTR	DESCRIPTION	DATE	REVISOR	APPD
------	------	-----	-------------	------	---------	------

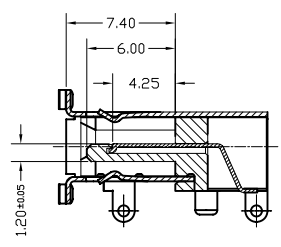
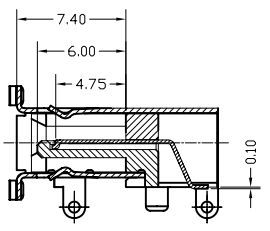
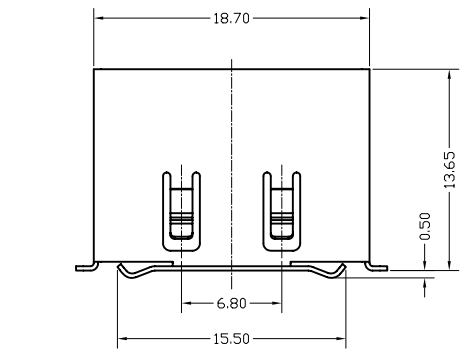
ORDERING INFORMATION:

6SA U 07 MP - 3 \* 0 B  
 (1) (2) (3) (4) (5) (6) (7) (8)

- (1) SERIES NUMBER:  
6SA : SERIAL ATA CONNECTOR
- (2) TAIL CONSTRUCTION TYPE  
U : RIGHT ANGLE SMT TYPE
- (3) NO. OF POSITION:  
07 :7POSITIONS
- (4) CONTACT &CONNECTING TYPES:  
MP : PLUG ,METAL SHELL TYPE
- (5) COLOR CODES:  
3 :BLACK  
N :DARK RED
- (6) PLATING OF CONTACT :  
0 : GOLD FLASH OVER NICKEL  
2 : 15u"GOLD OVER NICKEL  
3 : 30u"GOLD OVER NICKEL
- (7) TAIL LENGTH :  
0 : SMT TYPE
- (8) SUFFIX NO1 :  
B : WITHOUT LOGO

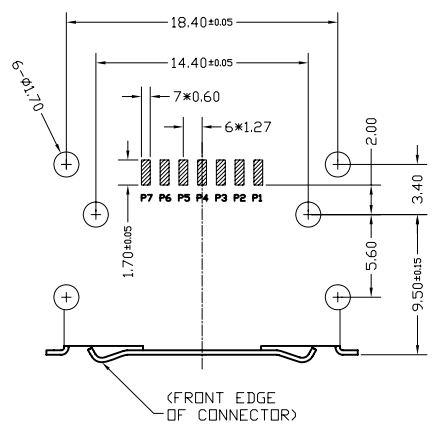
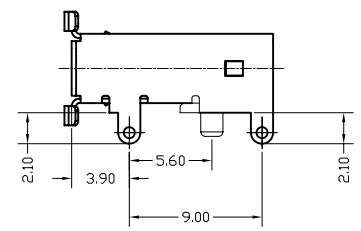
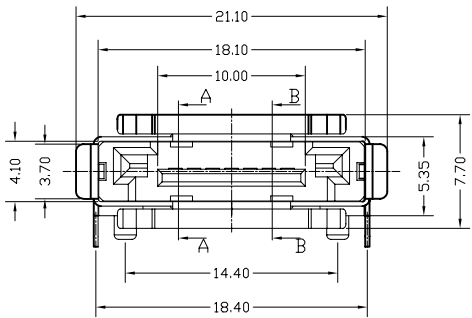
NOTE:

- 1.MATERIAL:  
HOUSING:HIGH TEMPERATURE THERMOPLASTIC,UL94V-0  
CONTACT:BRASS,GOLD PLATING OVER NICKELON CONTACT AREA,TIN PLATING ON SOLDER AREA  
SHELL:BRASS,NICKEL PLATED
- 2.MECHANICAL:  
INSERTION FORCE: 4.5Kgf Max.  
WITHDRAWAL FORCE: 1Kgf Min.  
DURABILITY: 2500 CYCLES
- 3.ELECTRICAL SPECIFICATION:  
OPERATION VOLTAGE: 100V AC Max.  
CURRENT RATING: 1.5A PER CONTACT  
CONTACT RESISTANCE: 45m ohm Max.  
AFTER PHYSICAL AND ENVIRONMENTAL TESTING.  
INSULATION RESISTANCE: 1000M OHM Min.  
DIELECTRIC WITHSTANDING VOLTAGE: 500V AC
- 4.ENVIRONMENTAL:  
OPERATION TEMPERATURE: -25°C~+85°C

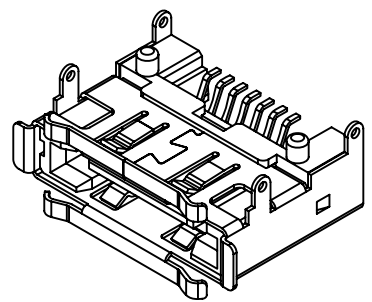
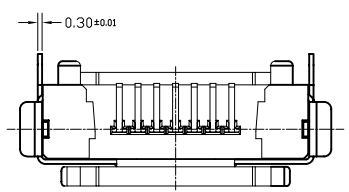
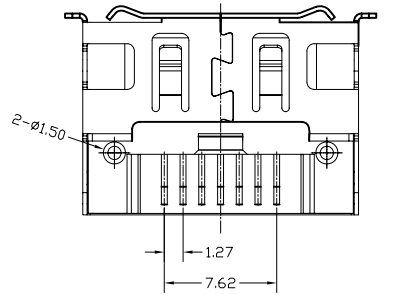


SECTION A-A

SECTION B-B



RECOMMENDED PC BOARD LAYOUT



			PART NO.	
MATERIAL	TOLERANCE UNSPECIFIED			
	.000	± 0.20		
FINISH	.00	± 0.25	SCALE 1:1	UNIT MM
	.0	± 0.38		
		±	NAME SATA II 7PIN PLUG RIGHT ANGLE SMT TYPE (METAL SHELL TYPE)	SHEET 1/1
	ANGLE	± 2°		
Draw Wujian 4/18 06'		Drawing No. R-S16SA-42		REV. 1.0
Designer				
Checked Peterhu				
Approved John				