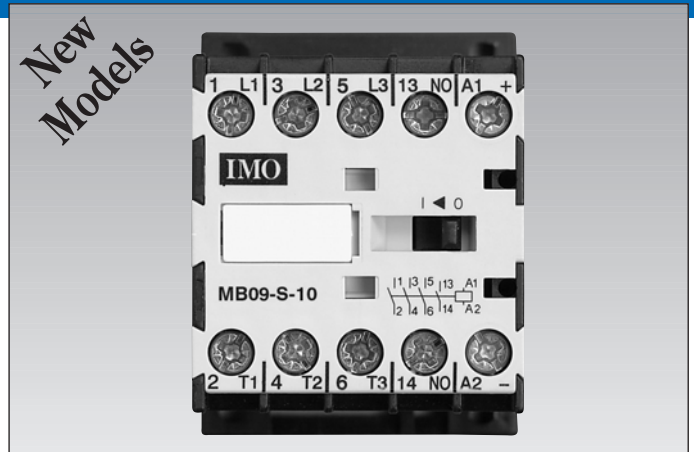
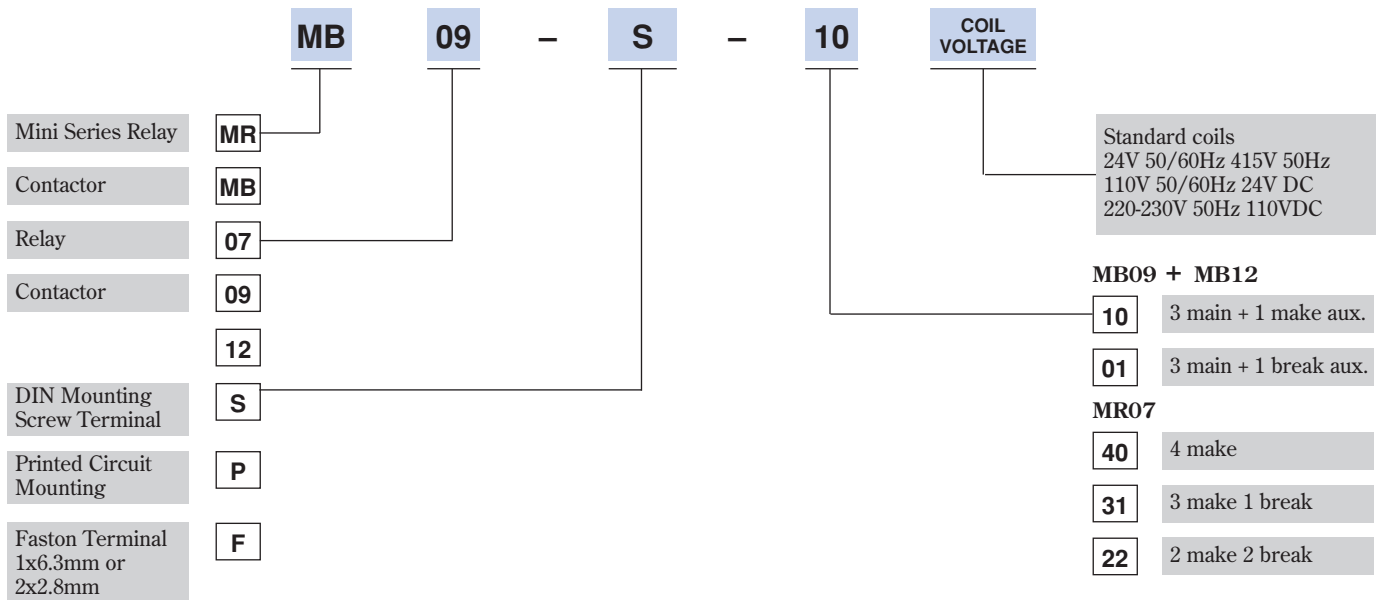


- DIN or printed circuit mounting
- AC or DC operation
- Long life
- Fingertouch protection
- Twin bifurcated auxiliary contacts
- International approvals including UL and CSA
- Designed to EN 60947-4-1



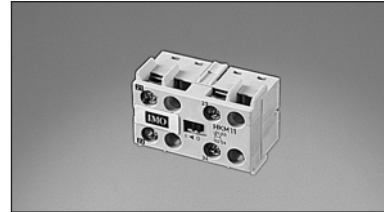
Options and ordering codes



Auxiliary contacts

| Contacts | For use with |
|----------------|-------------------|
| 1 make 1 break | MR07 |
| 2 make 2 break | MR07 |
| 1 make 1 break | MB09/12 |
| 2 make 2 break | MB09/12 |
| 1 make 1 break | MB09-R-S-01 (LHS) |
| 1 make 1 break | MB09-R-S-01 (RHS) |

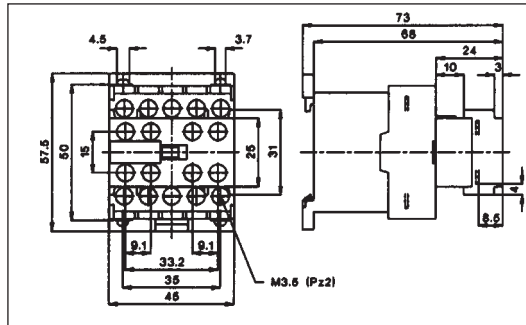
Add-on contacts.
 Snap on top of contactor.
 Twin bifurcated contacts suitable for low level switching.



Ratings

| | | |
|------------------------|-----|----------|
| AC1 (I _{th}) | 10A | 690 V AC |
| AC15 | 3A | 230 V AC |
| | 2A | 400 V AC |

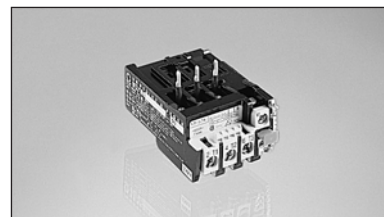
Dimensions (mm)



Overload

| Current Range |
|---------------|
| 0.12-0.18 |
| 0.18-0.27 |
| 0.27-0.4 |
| 0.4-0.6 |
| 0.6-0.9 |
| 0.8-1.2 |
| 1.2-1.8 |
| 1.8-2.7 |
| 2.7-4 |
| 4-6 |
| 6-9 |
| 8-11 |
| 10-14 |

Hand reset.
 Single phase protection.
 Trip and alarm contacts.
 Ambient temperature compensation -25 to +40°C.



Dimensions (mm)

