



HOW TOOLS SHOULD BE





# STORAGE



## THE STORAGE RANGE INCLUDES

Tool Boxes  
Tool Bags, Belts and Accessories

## CAPACITY TO DELIVER

Wherever the tradesman is, whatever the job, our toolboxes, belts and bags will keep his tools safe and secure. C.K tool belts ensure the tools needed for the job are close at hand, and safe and sound.

We've listened to your demands for security, convenience and safety, and created quality products that perform just how you need them to, whenever you need them. Our toolboxes, bags and belts have been developed by experts who understand the demands of users.

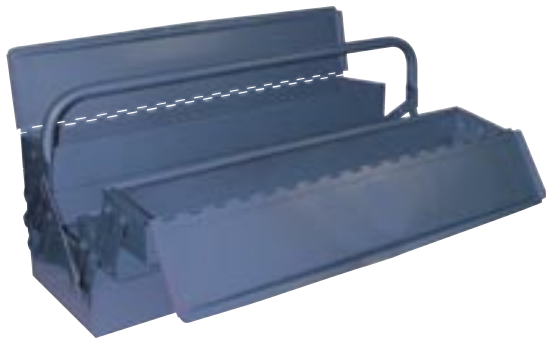


# STORAGE

## TOOL BOX

### CANTILEVER TOOL BOX 1612

Manufactured 24 gauge steel. Trays connected by strong lacquered stays. Tube steel folding handle. Lockable. Full length piano hinges. Lid and box edges interlock and protect against the entry of water. Blue stove enamel finish.



SIZE/NO. of Trays	SIZE	ITEM NO.	BOX QTY	WEIGHT
6/5	530 x 195 x 200mm / 21 x 7 <sup>3</sup> / <sub>4</sub> x 8"	T1612	1	4.75kg

### THE BAG - MONSTER 1629

Great new improved Monster Bag:

- Brand new water proof and crack proof base
- Base will not crack in cold weather
- Range of 36 different pockets and straps
- Padded carrying handle for maximum comfort



SIZE	ITEM NO.	BOX QTY	WEIGHT
725 x 270 x 300mm / 21 <sup>1</sup> / <sub>4</sub> x 11 x 12"	T1628	1	2.1kg

## TOOL BAGS, BELTS and ACCESSORIES

Great new improved range.

- All new colours designed not to show dirt
- Brand new water proof and crack proof bases
- Heavy duty 600D polyeste

### THE BAG - MINI 1627

Great new improved Mini Bag:

- Brand new water proof and crack proof base
- Base will not crack in cold weather
- Range of 32 different pockets and straps
- Padded carrying handle for maximum comfort



SIZE	ITEM NO.	BOX QTY	WEIGHT
410 x 230 x 260mm / 16 x 8 <sup>3</sup> / <sub>4</sub> x 10 <sup>1</sup> / <sub>4</sub> "	T1627	1	1.6kg

### THE BAG - MAXI 1628

Great new improved Maxi Bag:

- Brand new water proof and crack proof base
- Base will not crack in cold weather
- Range of 36 different pockets and straps
- Padded carrying handle for maximum comfort



SIZE	ITEM NO.	BOX QTY	WEIGHT
540 x 280 x 300mm / 21 <sup>1</sup> / <sub>4</sub> x 11 x 12"	T1628	1	2.1kg

**PRICES FOR GUIDANCE ONLY, EXC. VAT.**

## TECHNICIAN'S TOOL CASE 1630

- Great new improved Technician's Tool Case:
- 50 internal and external pockets and carrying straps
  - Padded central compartment with adjustable divider to secure and protect valuable tools and equipment
  - Side compartments unzip to display tools for easy access
  - 2 internal zipped document pockets for plans and paper
  - Greater stability than conventional 'A frame' designs
  - Permanently free standing, no need to erect
  - Padded shoulder strap and carrying handle



SIZE	ITEM NO.	BOX QTY	WEIGHT
430 x 190 x 320mm / 17 x 7½ x 12½"	T1630	1	2.8kg

## TECHNICIAN'S RUCKSACK 1631

- Great new Technician's Rucksack:
- 48 internal and external pockets and straps for essential tools
  - Padded internal section to secure and protect valuable tools and equipment
  - 2 fold-out wings for easy tool access
  - 2 mobile phone holders for quick and easy access to either personal or business phones
  - Padded shoulder straps and carrying handle



SIZE	ITEM NO.	BOX QTY	WEIGHT
350 x 190 x 430mm / 13¾ x 7½ x 17"	T1631	1	2.7kg

## BUILDER'S BOX SET 1714

- Great new Builder's Box Set:
- Complete builder's set with Pouch, Padded Belt, Drill Holster and Phone Holder
  - Large, rigid pockets for huge carrying capacity and easy access



ITEM NO.	BOX QTY	WEIGHT
T1714	1	1.3kg

## ELECTRICIAN'S BOX SET 1715

- Great new Electrician's Box Set:
- Complete electrician's set with Pouch, Padded Belt, Drill Holster and Phone Holder
  - Large, rigid pockets for huge carrying capacity and easy access



ITEM NO.	BOX QTY	WEIGHT
T1715	1	1.3kg

### BUILDER'S TOOL POUCH

1716

Great new Builder's Pouch:

- 12 rigid pockets and carrying straps for easy tool access
- Swivel hammer loop keeps the hammer hanging vertically
- Handy metal tape holder



Tools not included

SIZE	ITEM NO.	BOX QTY	WEIGHT
310 x 85 x 360mm / 12 1/4 x 3 1/4 x 14"	T1716	1	600g

### ELECTRICIAN'S TOOL POUCH

1717

Great new Electrician's Pouch:

- 15 rigid pockets and carrying straps for easy tool access
- Swivel hammer loop keeps the hammer hanging vertically
- Handy metal tape holder
- Insulating tape holder



Tools not included

SIZE	ITEM NO.	BOX QTY	WEIGHT
350 x 190 x 430mm / 13 3/4 x 7 1/2 x 17"	T1717	1	600g

### TOOL ROLL/TIDY

1718

Great new improved Tool Roll/Tidy:

- 30 pockets designed to carry a range of essential tools
- Can be used as a tool roll or for wall hanging
- Padded carrying handle and 2 plastic fastening clips

Tools not included



SIZE	ITEM NO.	BOX QTY	WEIGHT
500 x 560 / 19 3/4 x 22"	T1718	1	1.45kg

### CHISEL ROLL

1719

Great new improved Chisel Roll:

- Convenient and safe storage of up to 9 chisels
- Padded carrying handle and 2 plastic fastening clips

Tools not included



SIZE	ITEM NO.	BOX QTY	WEIGHT
370 x 540mm / 14 1/2 x 21 1/4"	T1719	1	350g

## CORDLESS DRILL HOLSTER 1720

- Great new improved Cordless Drill Holster:
- Padded construction for maximum comfort and protection of your valuable drill
  - Velcro strap to hold drill securely
  - Easy access drill and screwdriver bit holders



Belt and tools not included



SIZE	ITEM NO.	BOX QTY	WEIGHT
330 x 170mm / 13 x 6 <sup>3</sup> / <sub>4</sub> "	T1720	1	200g

## PADDED BELT 1723

- Great new Padded Belt:
- Designed to fit waists from 32 to 42"
  - Padded construction for maximum comfort
  - Extra heavy duty construction featuring metal eyelets



Belt accessories and tools not included

SIZE	ITEM NO.	BOX QTY	WEIGHT
1148 x 155mm / 45 <sup>1</sup> / <sub>4</sub> x 6"	T1723	1	400g

## HAMMER LOOP 1721

- Great new improved Hammer Loop:
- Swivel hammer loop always keeps the hammer vertical
  - Velcro strap for fast, easy attachment and removal from belt



Belt and tools not included



SIZE	ITEM NO.	BOX QTY	WEIGHT
170 x 120mm / 6 <sup>3</sup> / <sub>4</sub> x 4 <sup>3</sup> / <sub>4</sub> "	T1721	1	200g

## PHONE HOLDER 1722

- Great new improved Phone Holder:
- Padded construction for secure protection of your mobile phone
  - Stainless steel belt clip for maximum strength



Belt and tools not included



SIZE	ITEM NO.	BOX QTY	WEIGHT
110 x 65 x 48mm / 4 <sup>1</sup> / <sub>4</sub> x 2 <sup>1</sup> / <sub>2</sub> x 2"	T1722	1	130g