

5

4

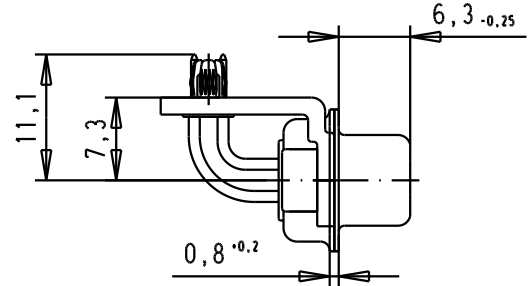
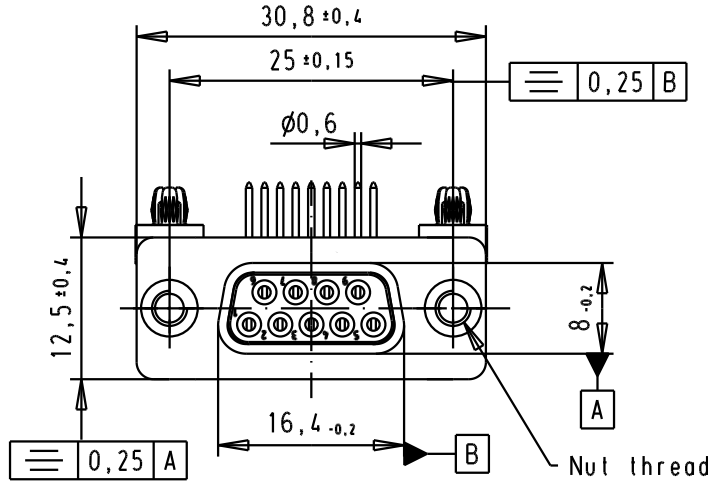
3

2

1

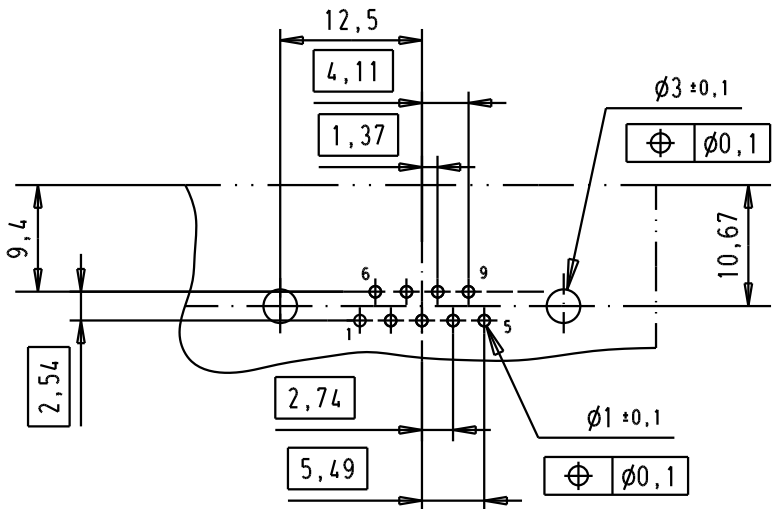
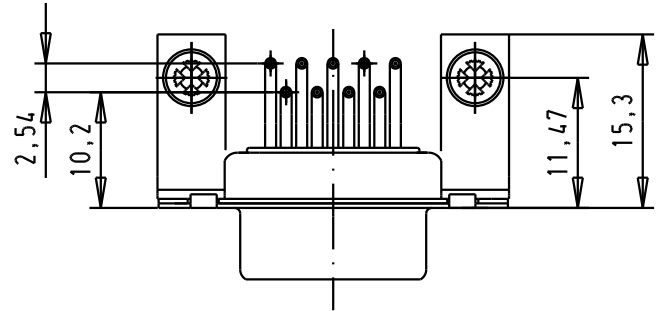
**SPECIFICATION**

Mating Cycles	500
Filter type	C
Capacitance	1000pf±20%
Working Voltage	100v
Current Rating	7.5A
Insulation Resistance	>1GΩ





PCB Layout, Component side, thickness 1.6 mm

FREQUENCY (MHz)	ATTENUATION (dB)
5	1dB
10	3dB
50	12dB
100	20dB
500	34dB
1000	30dB



09641147233	M3
09641147232	UNC 4-40
Part number	Nut thread

				Dat.	Name	 All Dim. in mm Orig. Size DIN A 4
			Detail.	8-JUL-02	CV	
			Insp.			
33231	07/10/05	JMDR	Stand.			
						 HARTING EURL F-95972 Paris

D-Sub, female, angled, 9 Poles, solder pins, tin plated shell with brackets, board-locks and clinch nuts

TB 0964114723x

Mo?MsLab/  
Scale  
1.5:1  
Blatt/ Page  
1 / 4