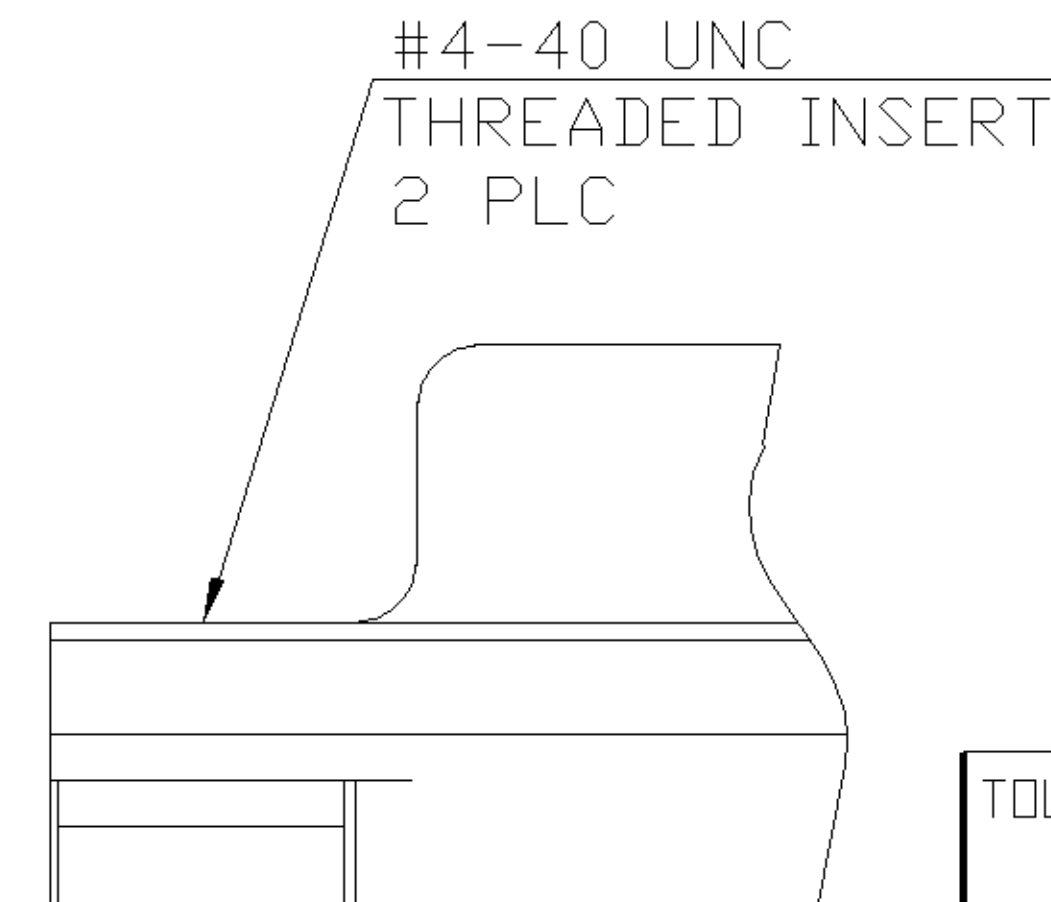
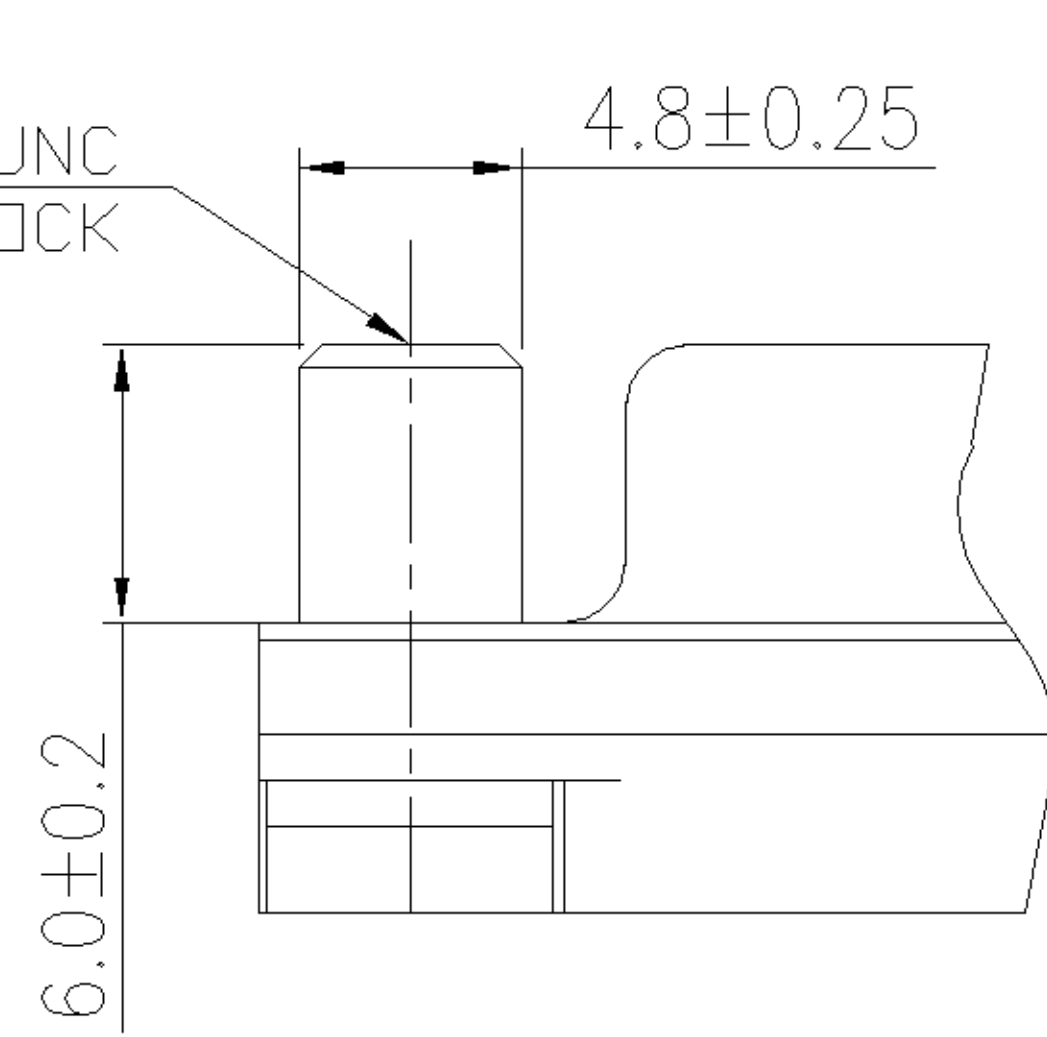
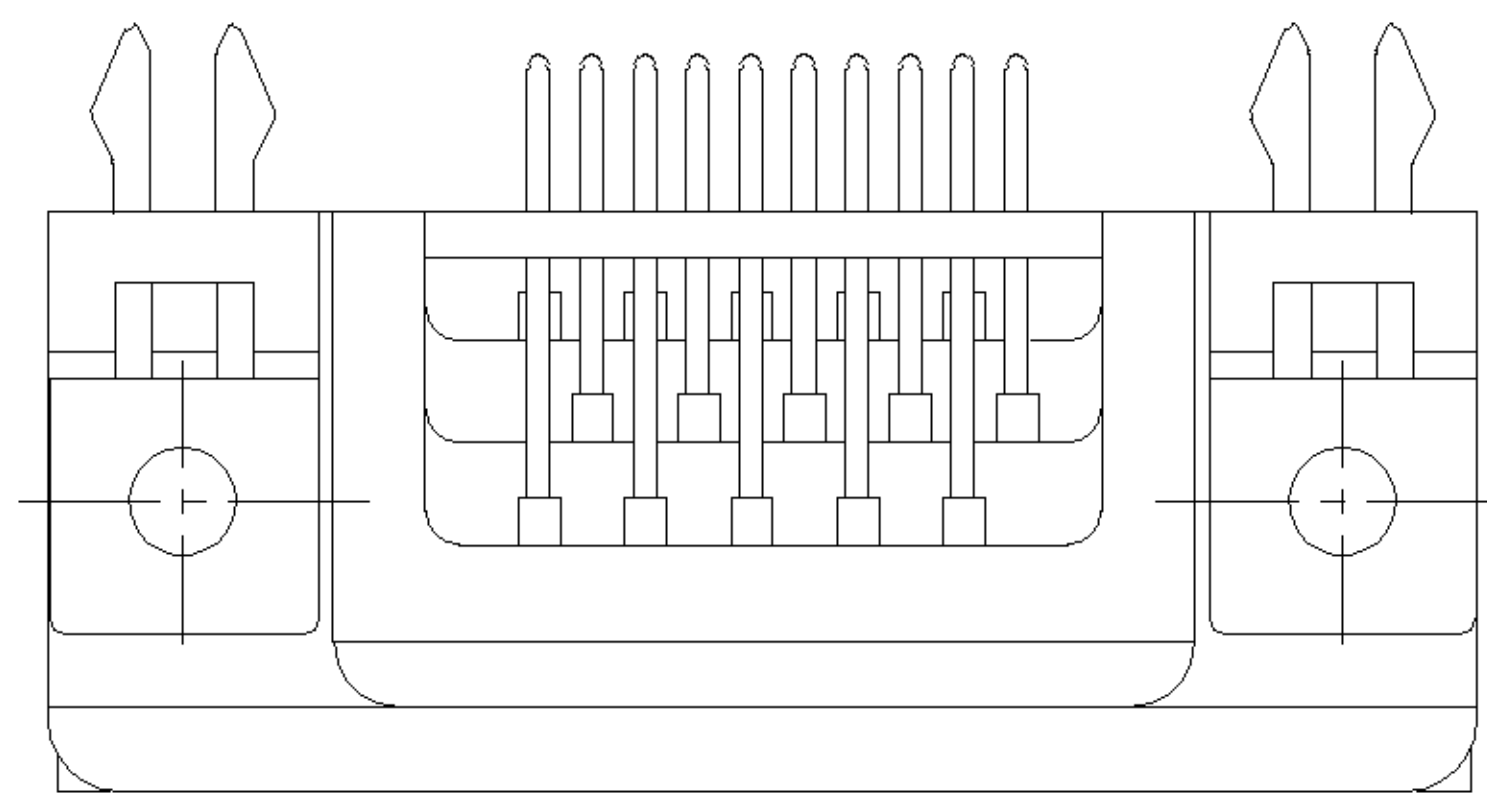
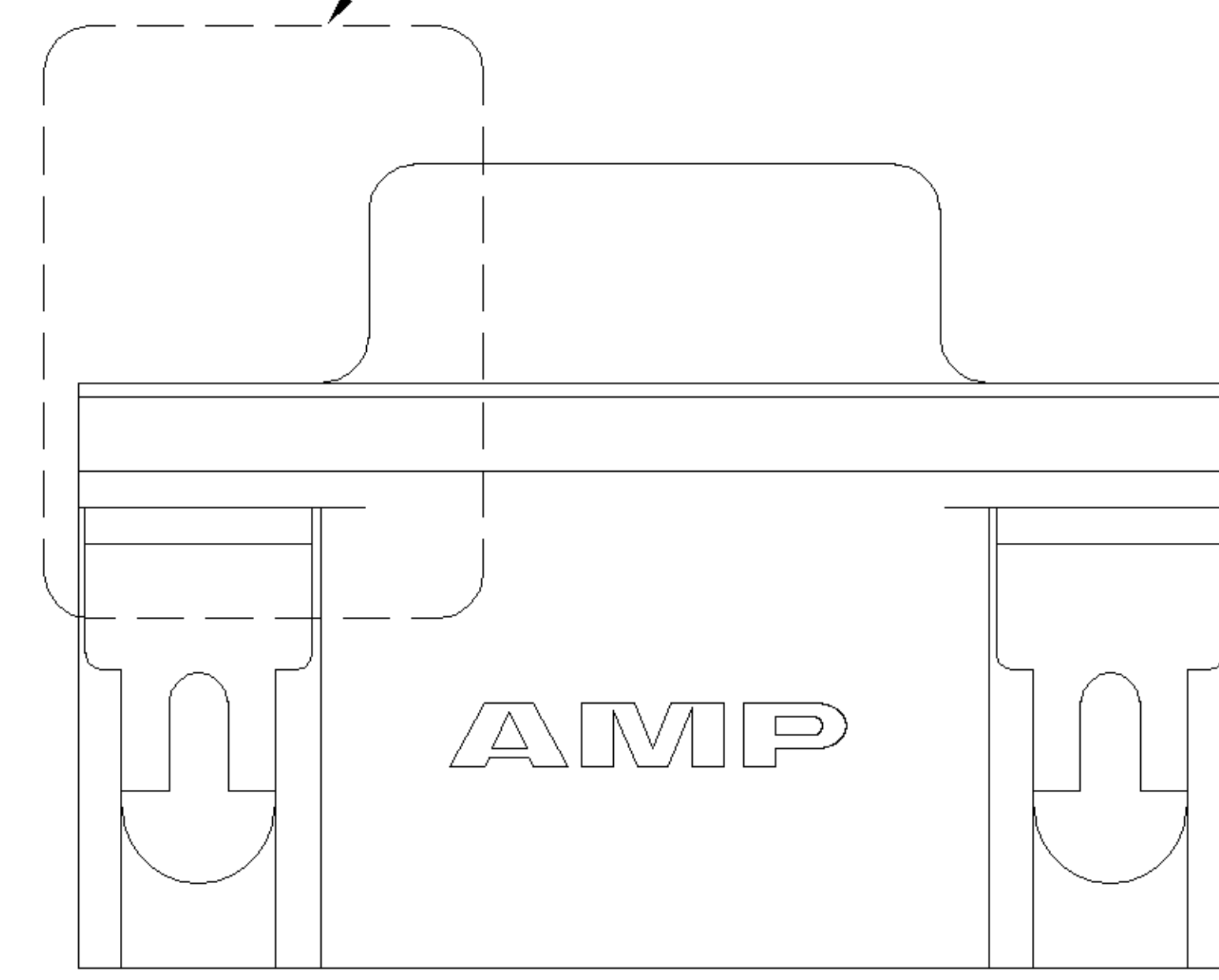
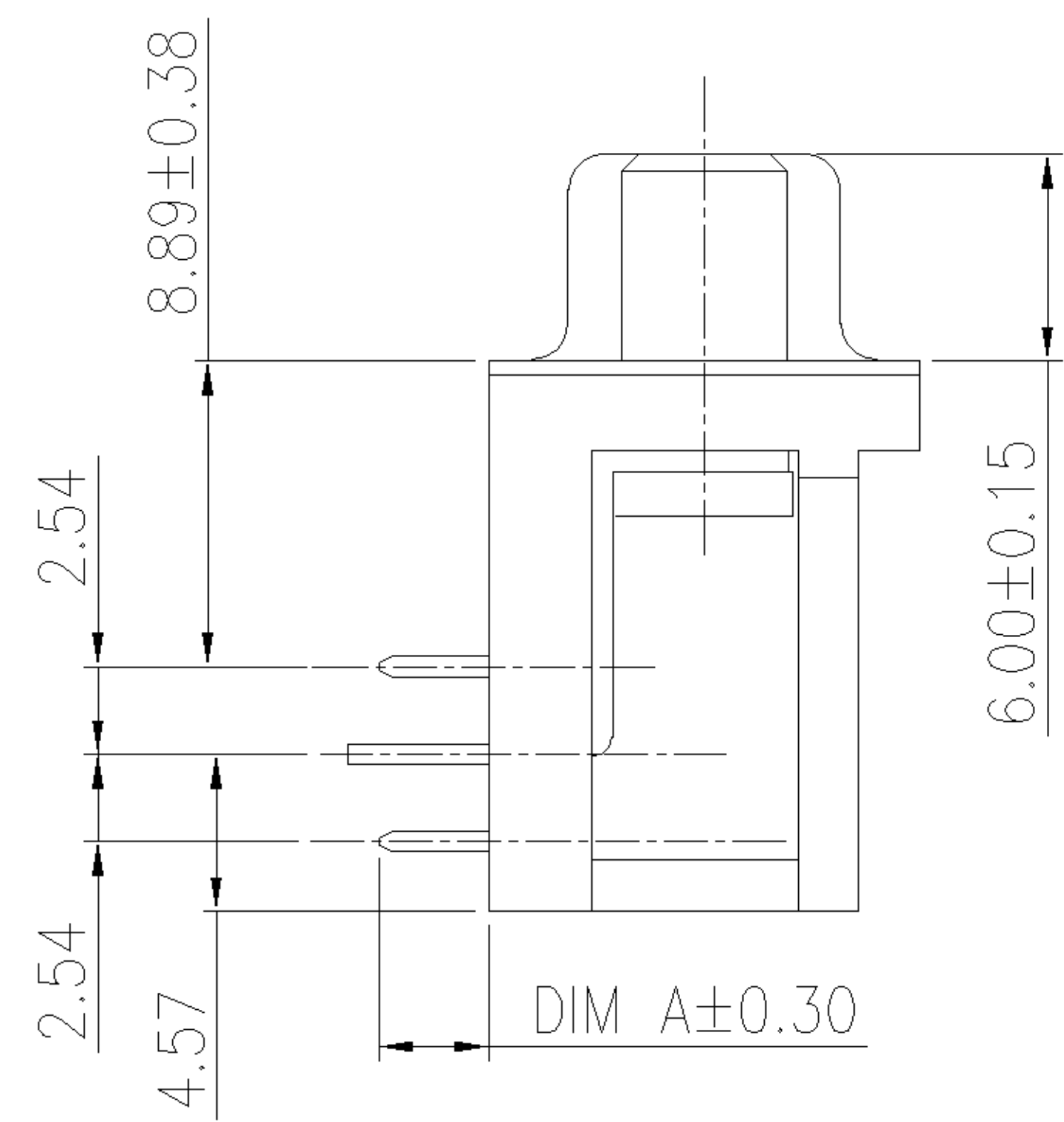
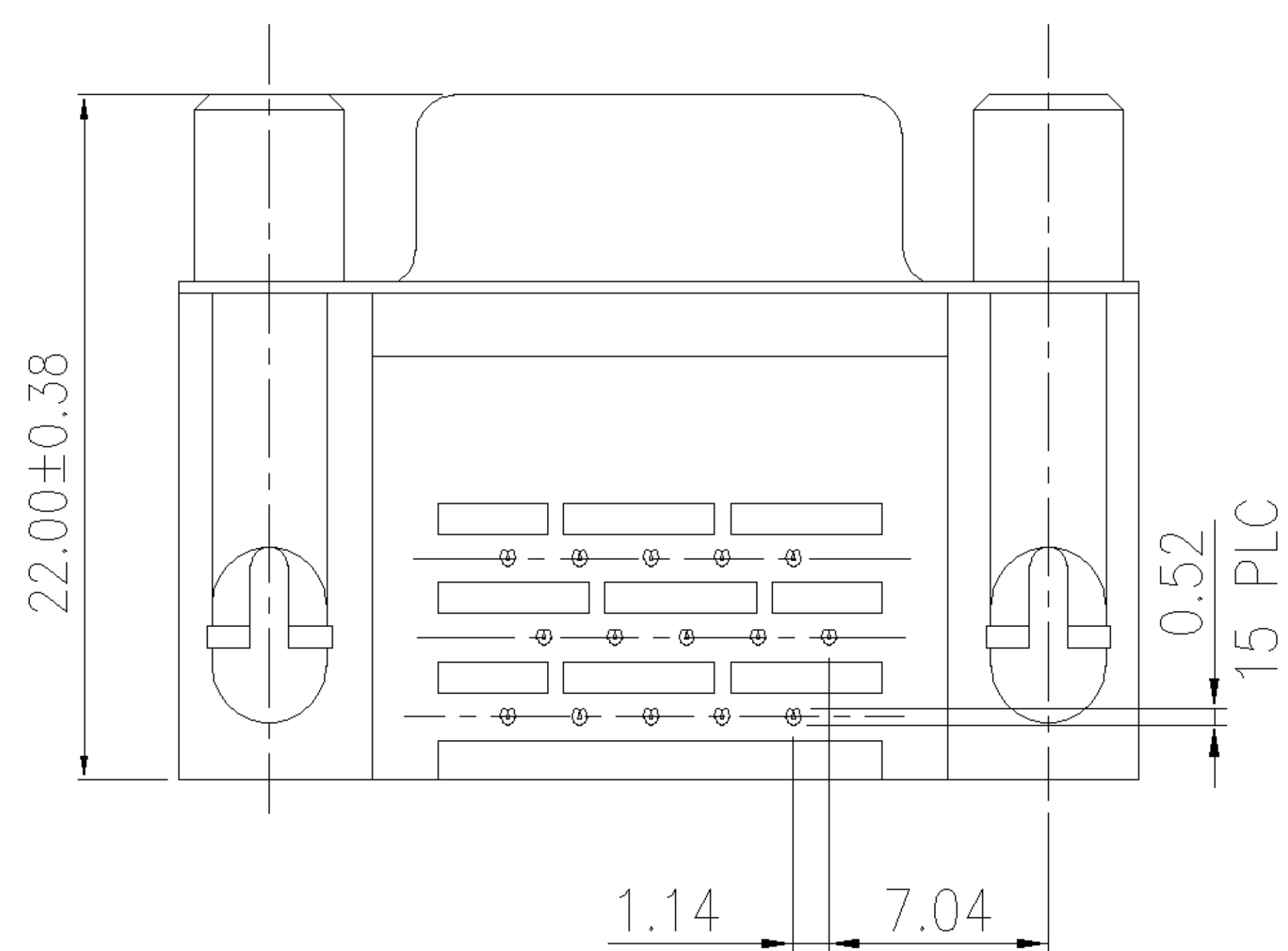


RECOMMENDED P.C. BOARD LAYOUT

SEE TABLE FOR MOUNTING FLANGE CONFIGURATION



DETAIL E

DETAIL F

NOTES:

- MATERIAL :
 - HOUSING: THERMOPLASTIC, UL 94V-0 RATED, BLACK
 - CONTACTS: PHOPHOR BRONZE
 - SHELL: SPCC
 - BOARDLOCKS: BRASS.
 - RIVET: BRASS.
 - SCREWLOCK: BRASS
- FINISH:
 - CONTACT: GOLD PLATING ON CONTACT AREA. 100u" MIN. MATTE TIN PLATING ON SOLDER TAIL AREA, 50u" MIN. NICKEL UNDERPLATED OVERALL,
 - BOARDLOCK: 100u" MIN MATTE TIN PLATING 50u" MIN NICKEL UNDERPLATED OVERALL,
 - SHELL: NICKEL PLATED
 - RIVET: NICKEL PLATING OVERALL
 - FIXED SCREWLOCK: NICKEL PLATED, MEETS 6 IN-LB TORQUE.
- RECOMMENDED PCB THICKNESS: 1.6 mm
- WAVE SOLDER CAPABLE TO 265°C PER TYCO SPEC. 109-202, CONDITION B.
- NET WEIGHT: 10.24 GRAM/PC (W/ SCREWLOCK)
8.24 GRAM/PC (W/O SCREWLOCK)

TRAY	W/O	3.18	DETAIL F	30µ"	3-1734530-3
TUBE	W/	3.18	DETAIL F	30µ"	2-1734530-3
TUBE	W/	3.18	DETAIL F	15µ"	2-1734530-2
TUBE	W/	3.18	DETAIL F	G/F	2-1734530-1
TRAY	W/	2.16	DETAIL F	30µ"	1-1734530-6
TRAY	W/	2.16	DETAIL F	15µ"	1-1734530-5
TRAY	W/	2.16	DETAIL F	G/F	1-1734530-4
TRAY	W/	3.18	DETAIL F	30µ"	1-1734530-3
TRAY	W/	3.18	DETAIL F	15µ"	1-1734530-2
TRAY	W/	3.18	DETAIL F	G/F	1-1734530-1
TRAY	W/	2.16	DETAIL E	30µ"	1734530-6
TRAY	W/	2.16	DETAIL E	15µ"	1734530-5
TRAY	W/	2.16	DETAIL E	G/F	1734530-4
TRAY	W/	3.18	DETAIL E	30µ"	1734530-3
TRAY	W/	3.18	DETAIL E	15µ"	1734530-2
TRAY	W/	3.18	DETAIL E	G/F	1734530-1
PACKAGING	BOARDLOCK	DIM. A	MOUNTING FLANGE	MIN. GOLD	PART NUMBER

TOLERANCES UNLESS OTHERWISE SPECIFIED: DWN	J. LEE 22-AUG-2005	tyco Electronics	TYCO HOLDINGS (BERMUDA) VII LTD. TAIWAN BRANCH		
0 PLC ±0.5 1 PLC ±0.3 2 PLC ±0.25 3 PLC ±0.15 ANGLES ±3°	CHK S. HOU 22-AUG-2005		NAME		
MATERIAL	APVD W.J. KE 22-AUG-2005	RECEPTACLE ASSY, SIZE 1, 15 POSITION, RIGHT ANGLE, THROUGH HOLE			
SEE NOTE	PRODUCT SPEC 108-57541	LOC DW	SIZE A ₃	DRAWING NO C-1734530	REV □
FINISH	APPLICATION SPEC 501-57621	SCALE --		SHEET 1 OF 3	
SEE NOTE	WEIGHT SEE NOTES				

□	NEW RELEASED	--	JL	SH	22-AUG-2005
LTR	REVISION RECORD	ECN	DWN	CHK	DATE

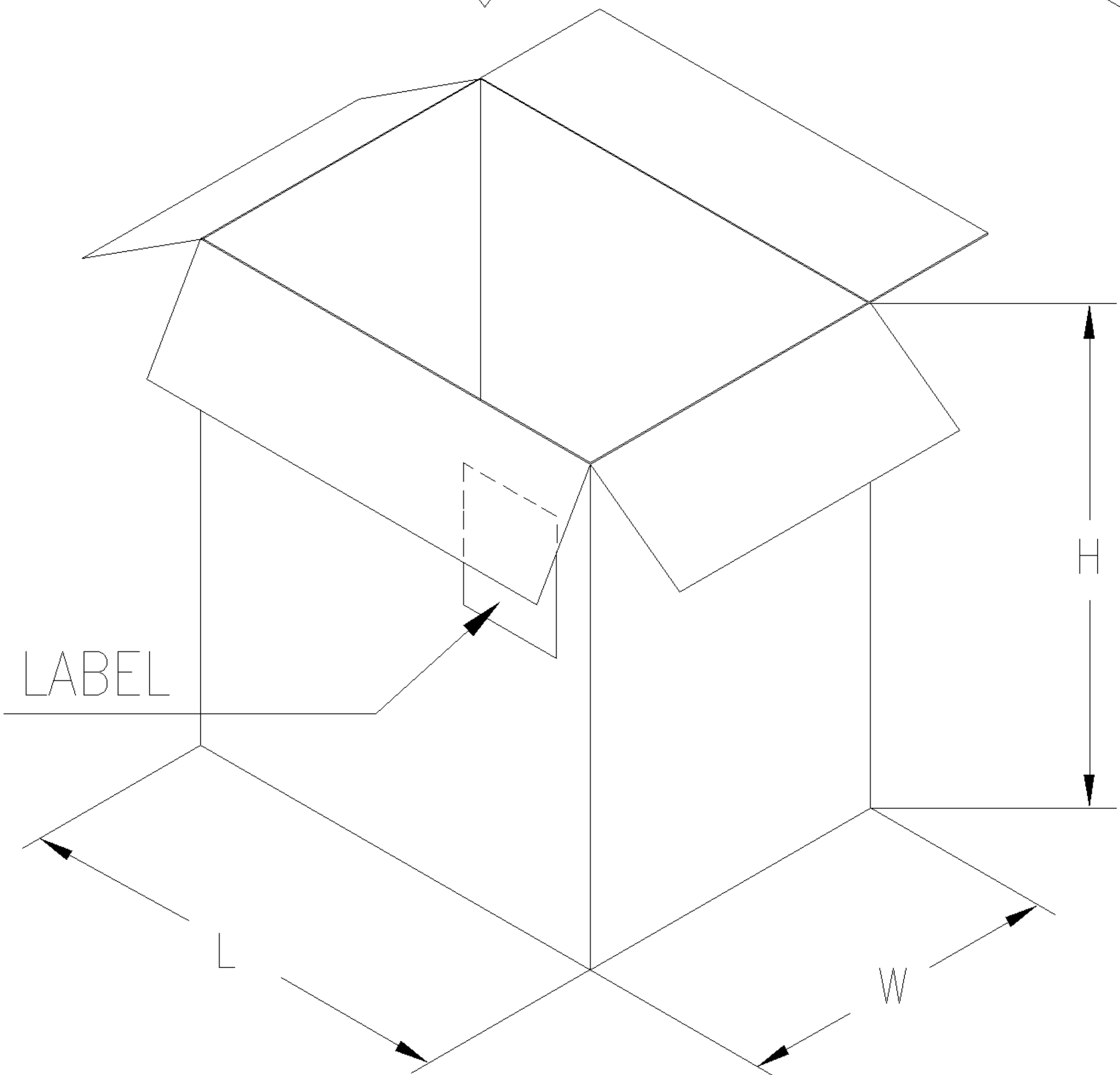
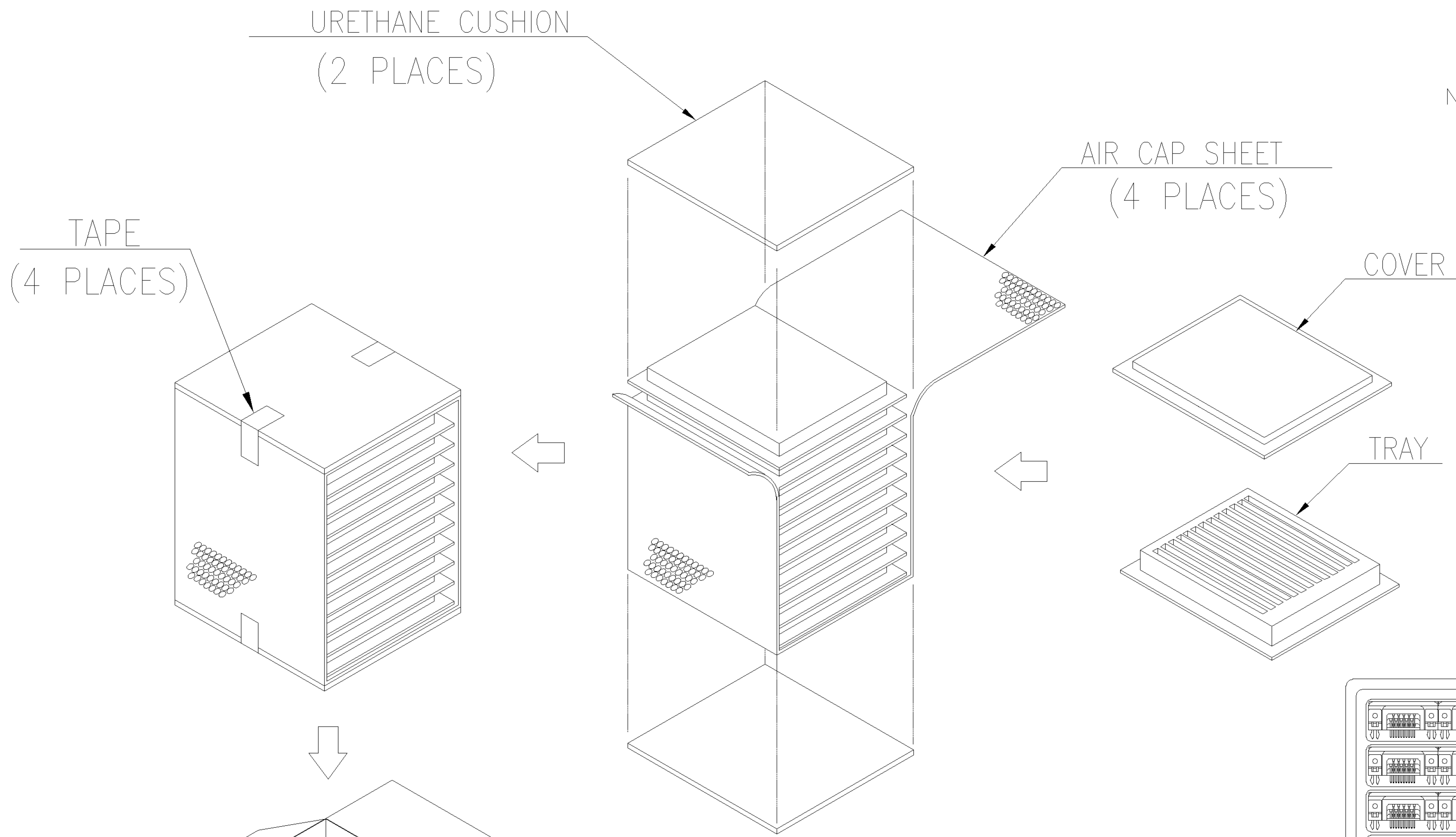
NUMBER
C-1734530

3RD ANGLE PROJECTION

METRIC

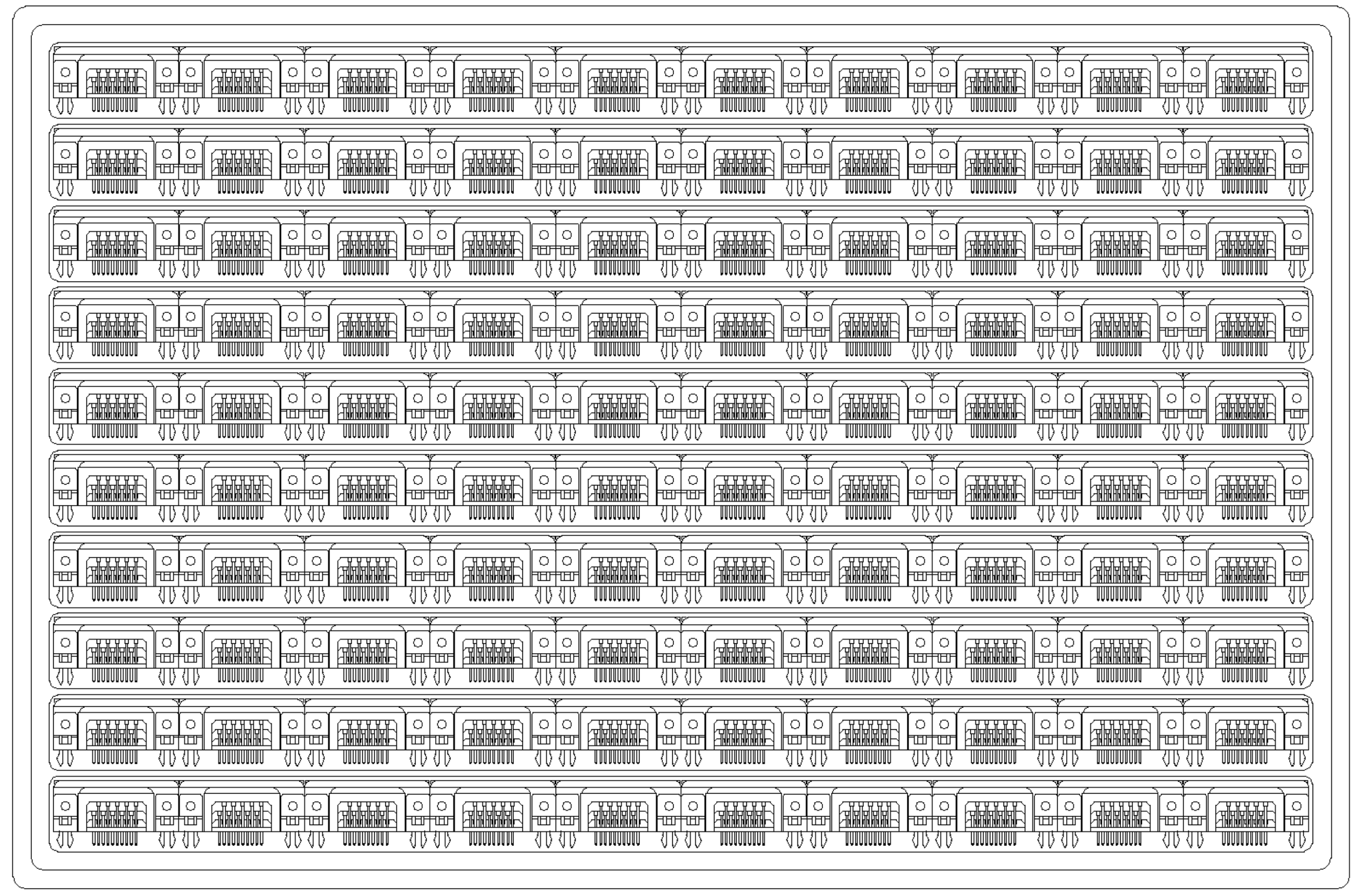
THIS INFORMATION IS CONFIDENTIAL AND IS DISCLOSED TO YOU ON CONDITION THAT NO FURTHER DISCLOSURE IS MADE BY YOU TO OTHER THAN AMP PERSONNEL WITHOUT WRITTEN AUTHORIZATION FROM AMP (TAIWAN) LTD. DIMENSIONS IN MILLIMETERS. DO NOT SCALE PRINT.

PRINT
DW



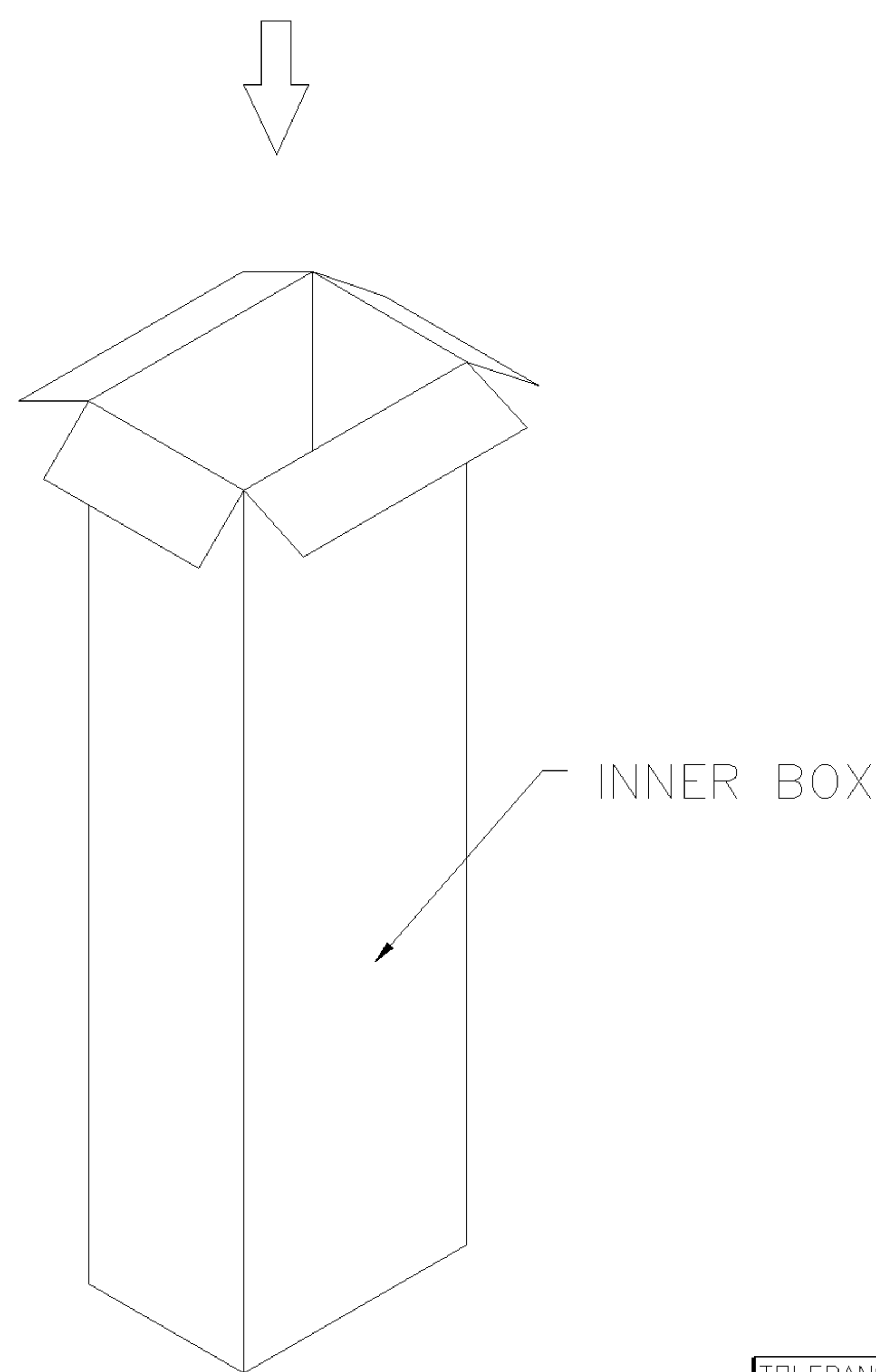
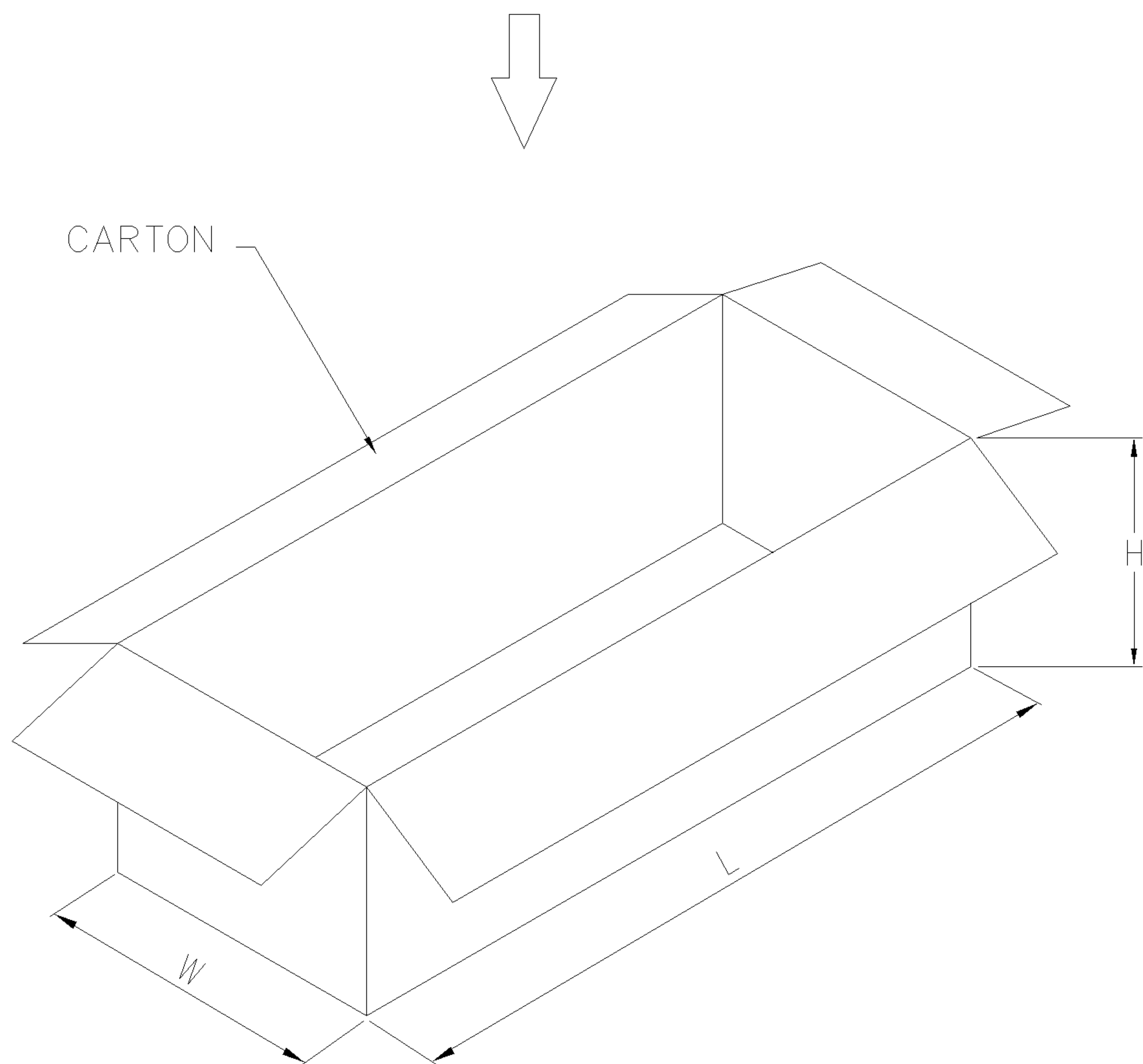
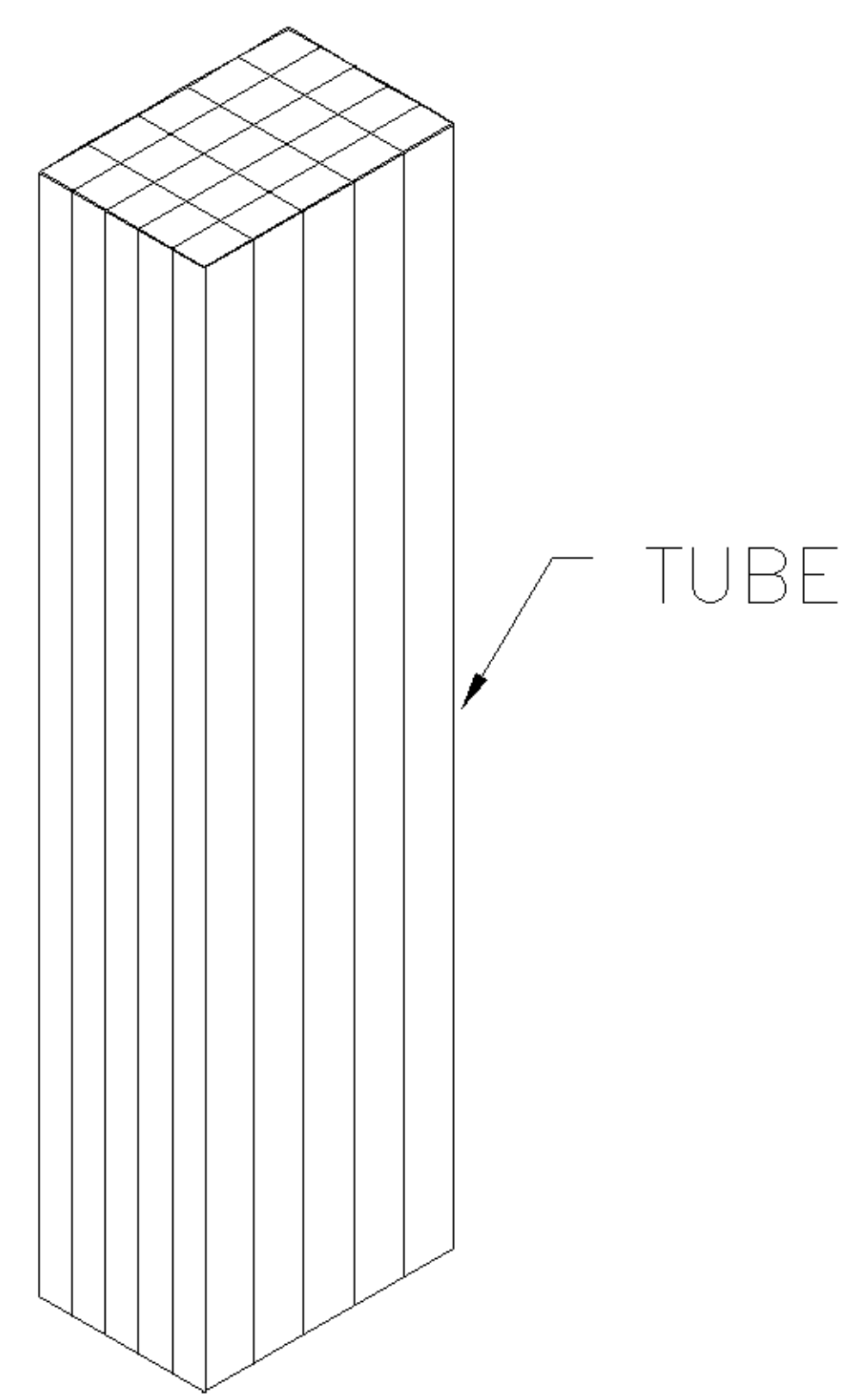
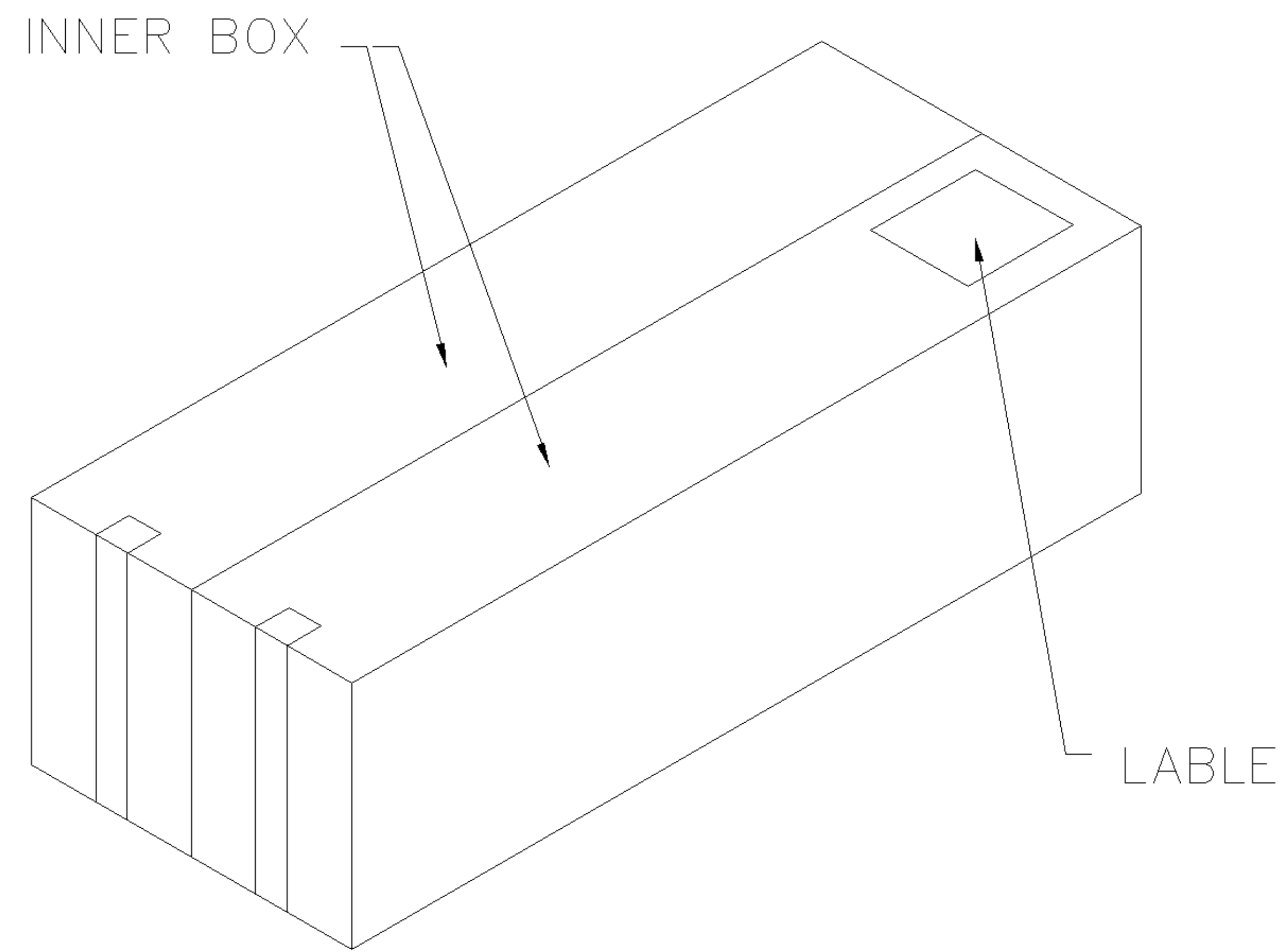
NOTES:

1. MATERIAL:
 - 1.1 TRAY: PVC
 - 1.2 SHIPPING CARTON: CORRUGATED FIBERBOARD
2. DIMENSION:
 - 2.1 TRAY: L=320,W=230,H=18.9
 - 2.2 SHIPPING CARTON: L=361,W=245,H=272
3. QUANTITY:
 - 3.1 PRIMARY PACKING: 100 PCS/TRAY
 - 3.2 SECONDARY PACKING: 10 TRAY/CARTON(1000PCS)
4. WEIGHT:
 - 4.1 NET WEIGHT: 10.24 Kg (W/ SCREWLOCK)
 - 4.2 GROSS WEIGHT: 11.24 Kg (W/ SCREWLOCK)
 - 4.3 NET WEIGHT: 8.24 Kg (W/O SCREWLOCK)
 - 4.4 GROSS WEIGHT: 9.24 Kg (W/O SCREWLOCK)



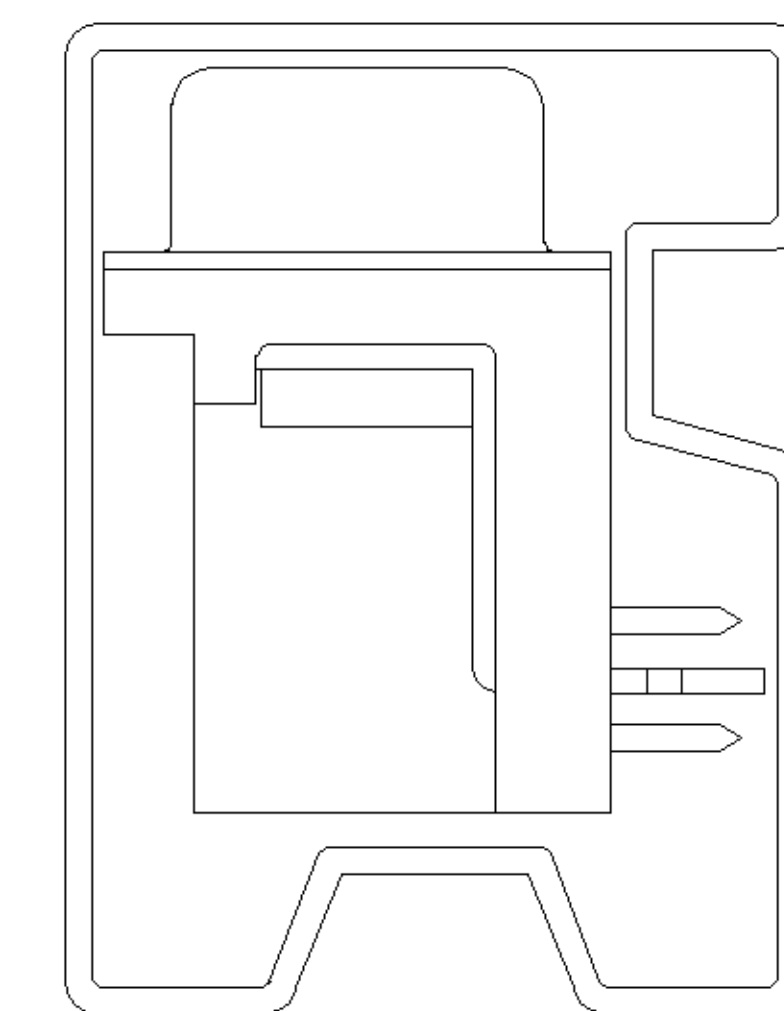
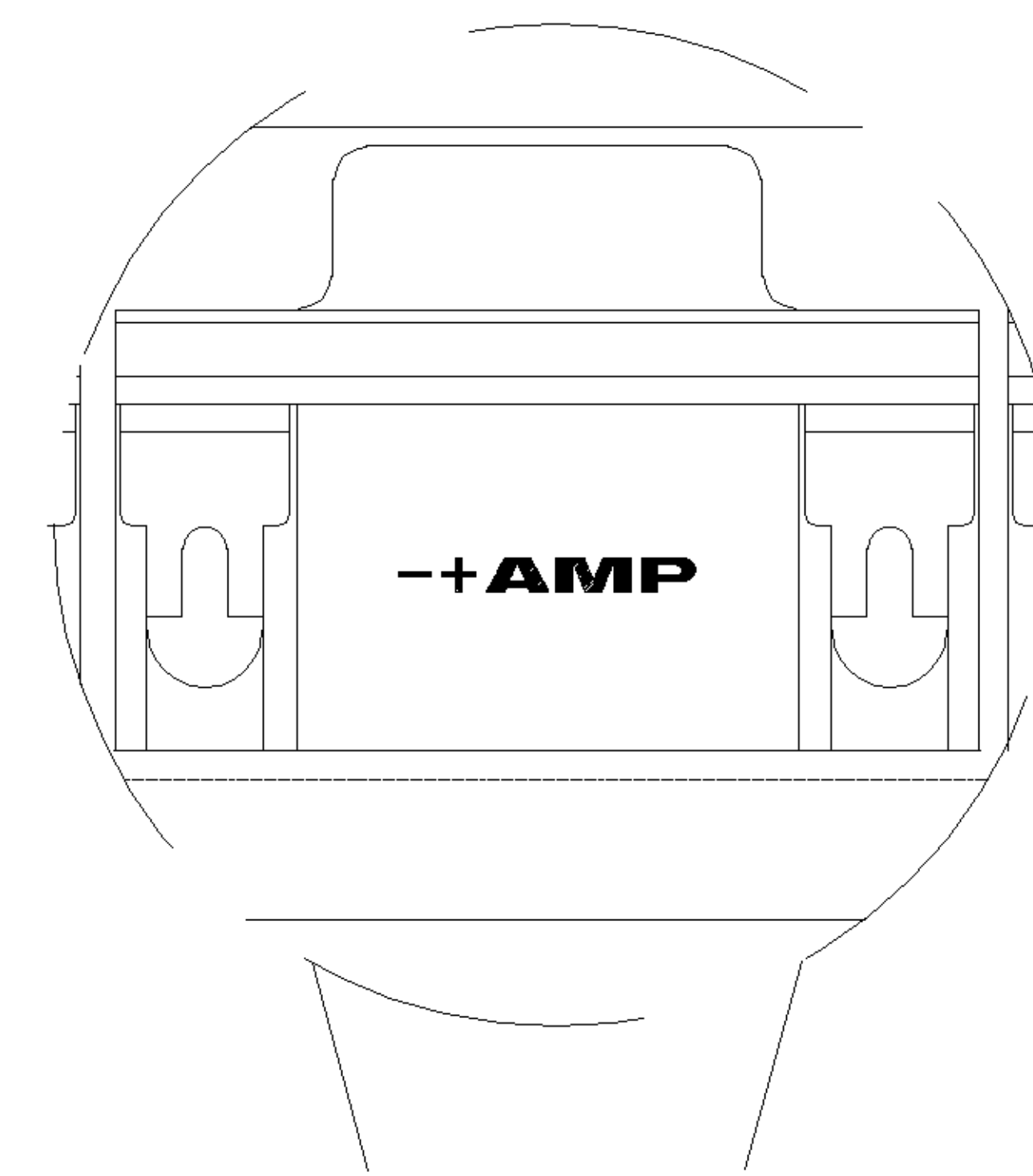
LTR	SEE SHEET 1	ECN	DWN	DATE
	REVISION RECORD		CHK	

TOLERANCES UNLESS OTHERWISE SPECIFIED: 0 PLC ±0.5 1 PLC ±0.3 2 PLC ±0.25 3 PLC ±0.15 ANGLES ±3°		DWN J. LEE 22-AUG-2005	tyco Electronics TYCO HOLDINGS (BERMUDA) VII LTD. TAIWAN BRANCH
MATERIAL SEE NOTE		CHK S. HOU 22-AUG-2005	
FINISH SEE NOTE		APVD W.J. KE 22-AUG-2005	NAME RECEPTACLE ASSY, SIZE 1, 15 POSITION, RIGHT ANGLE, THROUGH HOLE
		PRODUCT SPEC -	LOC DW
		APPLICATION SPEC -	SIZE A ₃
		WEIGHT	DRAWING NO C-1734530
			REV □
			SCALE --
			SHEET 2 OF 3

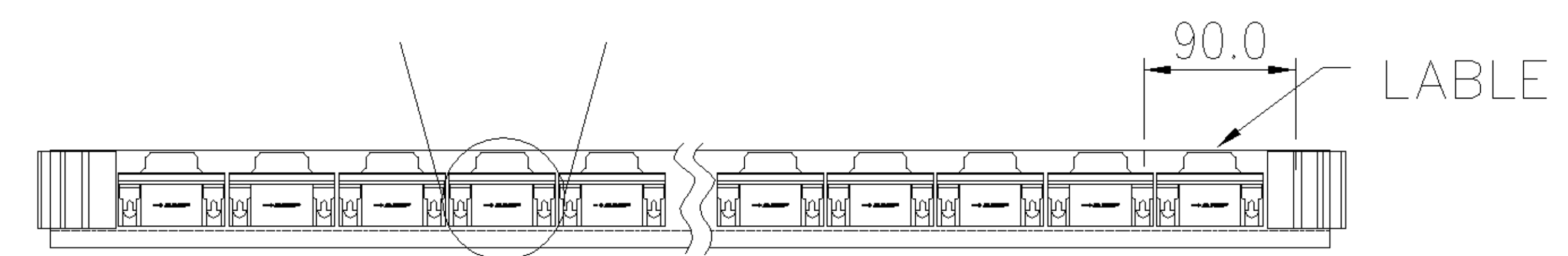


NOTES:

1. MATERIAL:
 - 1.1 TUBE: PVC
 - 1.2 SHIPPING CARTON: CORRUGATED FIBERBOARD
2. DIMENSION:
 - 2.1 TUBE: L=560,W=17.8,H=27.4
 - 2.2 SHIPPING CARTON: L=600,W=245,H=195
3. QUANTITY:
 - 3.1 PRIMARY PACKING: 17 PCS/TUBE
 - 3.2 SECONARY PACKING: 25 TUBE/BOX
 - 3.3 THIRD PACKING: 2 BOX/CARTON(850PCS)
4. WEIGHT:
 - 4.1 NET WEIGHT: 8.7 Kg (W/O SCREWLOCK)
 - 4.2 GROSS WEIGHT: 9.7 Kg (W/O SCREWLOCK)



SIDE VIEW:
(LOADED IN TUBE)



LTR	SEE SHEET 1	ECN	DWN	DATE
	REVISION RECORD		CHK	

TOLERANCES UNLESS OTHERWISE SPECIFIED: 0 PLC ±0.5 1 PLC ±0.3 2 PLC ±0.25 3 PLC ±0.15 ANGLES ±3°	DWN J. LEE 22-AUG-2005	tyco Electronics TYCO HOLDINGS (BERMUDA) VII LTD. TAIWAN BRANCH
MATERIAL SEE NOTE	CHK S. HOU 22-AUG-2005	
FINISH SEE NOTE	APVD W.J. KE 22-AUG-2005	NAME RECEPTACLE ASSY, SIZE 1, 15 POSITION, RIGHT ANGLE, THROUGH HOLE
	PRODUCT SPEC -	LOC DW
	APPLICATION SPEC -	SIZE A ₃
	WEIGHT	DRAWING NO C-1734530
		REV □
		SCALE --
		SHEET 3 OF 3