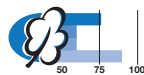


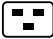
**Power entry module for high current
Type EC11**

- Panel mount: – screw-on version, front or rear-side
– snap-in version, front-side
- Appliance inlet with line switch 2-pole
- Version with line filter/shield see page 130


Characteristics

- All single elements are already wired
Unwired versions available on request
- Line switch non-illuminated or illuminated
- Qualified for use in equipment according to IEC/EN 60950

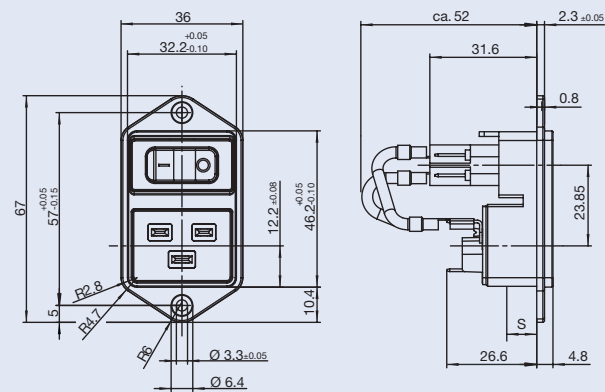
Technical data

Rated voltage	125/250 VAC
Rated current	16 A / 250 VAC; VDE 20 A / 125 / 250 VAC; UL/CSA
Dielectric strength (50 Hz, 1 Min.)	> 2,5 kV between L-N > 3 kV between L/N-PE
Allowable ambient air temperatures T _a	-25 °C to +70 °C
Degree of protection (front side)	IP40 acc. to IEC 60529
Protection class	suitable for equipment with prot. cl. I, acc. to IEC 61140
Terminals	Quick-connect 6,3 x 0,8 mm
Panel thickness s	screw-on: max. 8 mm snap-in: 1,5/2/2,5 mm
Materials: Housing	Thermoplastic, black, UL94 V-0
Appliance-inlet	 acc. to IEC/EN 60320-1/C20, Protection class I, pin-temperature 70 °C (cold condition)
Line switch (Rocker switch)	2-pole, non-illuminated or illuminated, acc. to IEC/EN 61058-1. Technical details see page 201

Accessories see page 171

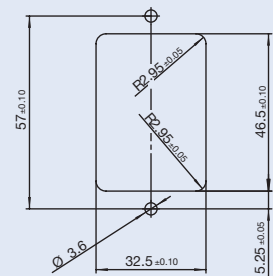
Dimensions

Screw-on mounting

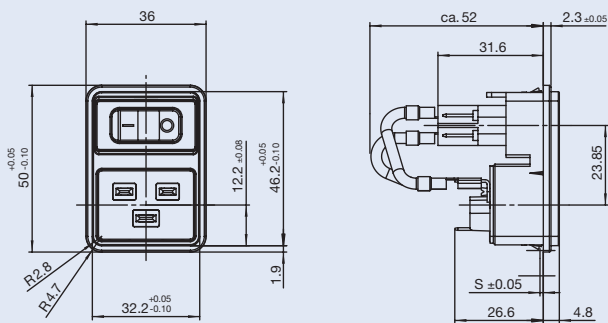


Mounting screw torque 0,5 Nm

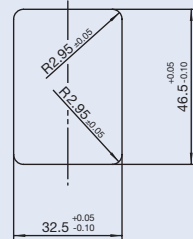
Panel cut-out



Snap-in mounting

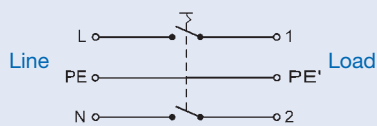


Panel cut-out

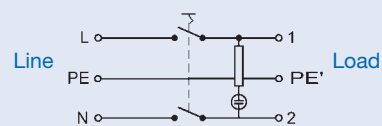


Diagrams

Line switch non-illuminated



Line switch illuminated



Order Numbers socket (with internal connections)

	Protection class	Line switch non-illuminated	illuminated 125/250 VAC, red	illuminated 125/250 VAC, green	Screw	Snap-in, panel-thickness s		
						1,5 mm	2,0 mm	2,5 mm
EC11.0001.001	I	•			•			
EC11.0001.201	I	•				•		
EC11.0001.301	I	•					•	
EC11.0001.401	I	•						•
EC11.0021.001	I		•		•			
EC11.0021.201	I		•			•		
EC11.0021.301	I		•				•	
EC11.0021.401	I		•					•
EC11.0031.001	I			•	•			
EC11.0031.201	I			•		•		
EC11.0031.301	I			•			•	
EC11.0031.401	I			•				•

Other versions on request:

- for protection class II
- line switch with other rocker marking
- unwired versions