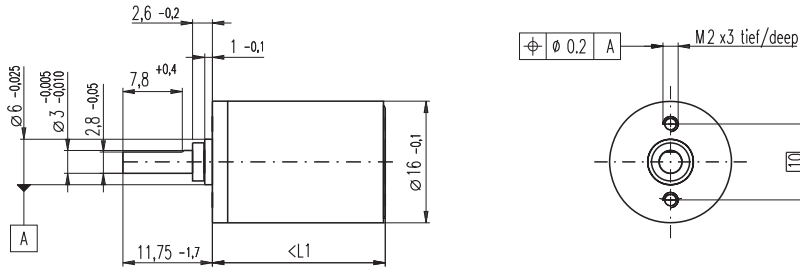


Planetary Gearhead GP 16 A $\varnothing 16$ mm, 0.1 - 0.3 Nm



M 1:1

Technical Data

Planetary Gearhead	straight teeth
Output shaft	stainless steel, hardened
Bearing at output	sleeve bearing
Radial play, 6 mm from flange	max. 0.1 mm
Axial play	0.02 - 0.10 mm
Max. permissible axial load	8 N
Max. permissible force for press fits	100 N
Sense of rotation, drive to output	=
Recommended input speed	< 8000 rpm
Recommended temperature range	-15 ... +100°C
Extended area as option	-35 ... +100°C
Number of stages	1 2 3 4 5
Max. radial load, 6 mm from flange	8 N 12 N 16 N 20 N 20 N

- Stock program
- Standard program
- Special program (on request)

Order Number

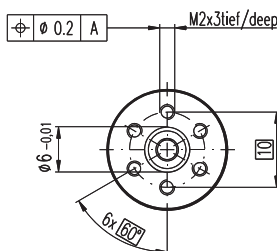
	110321	110322	110323	118186	110324	134782	110325	134785
Gearhead Data								
1 Reduction	4.4 : 1	19 : 1	84 : 1	157 : 1	370 : 1	690 : 1	1621 : 1	3027 : 1
2 Reduction absolute	$\frac{57}{13}$	$\frac{3249}{169}$	$\frac{185193}{2197}$	$\frac{19683}{125}$	$\frac{10556001}{28561}$	$\frac{1121931}{1625}$	$\frac{601692057}{371293}$	$\frac{63950067}{21125}$
3 Max. motor shaft diameter mm	2	2	2	1.5	2	2	2	2
Order Number	118184	134777	134778		134780	118187	134783	134786
1 Reduction	5.4 : 1	24 : 1	104 : 1		455 : 1	850 : 1	1996 : 1	3728 : 1
2 Reduction absolute	$\frac{27}{5}$	$\frac{1539}{65}$	$\frac{87723}{845}$		$\frac{5000211}{10985}$	$\frac{531441}{625}$	$\frac{285012027}{142805}$	$\frac{30292137}{8125}$
3 Max. motor shaft diameter mm	1.5	2	2		2	1.5	2	2
Order Number		118185	134779		134781		134784	118188
1 Reduction		29 : 1	128 : 1		561 : 1		2458 : 1	4592 : 1
2 Reduction absolute		$\frac{729}{25}$	$\frac{41553}{325}$		$\frac{2368521}{4225}$		$\frac{135005697}{54925}$	$\frac{14348907}{3125}$
3 Max. motor shaft diameter mm		1.5	2		2		2	1.5
4 Number of stages	1	2	3	3	4	4	5	5
5 Max. continuous torque Nm	0.10	0.15	0.20	0.20	0.25	0.25	0.30	0.30
6 Intermittently permissible torque at gear output Nm	0.150	0.225	0.300	0.300	0.375	0.375	0.450	0.450
7 Max. efficiency %	90	81	73	73	65	65	59	59
8 Weight g	20	23	27	27	31	31	35	35
9 Average backlash no load °	1.4	1.6	2.0	2.0	2.4	2.4	3.0	3.0
10 Mass inertia gcm ²	0.07	0.05	0.05	0.04	0.05	0.05	0.05	0.05
11 Gearhead length L1 mm	15.5	19.1	22.7	22.7	26.3	26.3	29.9	29.9



maxon Modular System

+ Motor	Page	+ Sensor / Brake	Page	Overall length [mm] = Motor length + gearhead length + (sensor / brake) + assembly parts							
RE 16, 2 W	72			37.9	41.5	45.1	45.1	48.7	48.7	52.3	52.3
RE 16, 2 W	72	MR	260/262	43.6	47.2	50.8	50.8	54.4	54.4	58.0	58.0
RE 16, 3.2 W	73/74			56.0	59.6	63.2	63.2	66.8	66.8	70.4	70.4
RE 16, 3.2 W	74	MR	260/262	61.0	64.6	68.2	68.2	71.8	71.8	75.4	75.4
RE 16, 3.2 W	74	MEnc 13	275	62.1	65.7	69.3	69.3	72.9	72.9	76.5	76.5
RE 16, 4.5 W	75/76			59.0	62.6	66.2	66.2	69.8	69.8	73.4	73.4
RE 16, 4.5 W	76	MR	260/262	64.0	67.6	71.2	71.2	74.8	74.8	78.4	78.4
RE 16, 4.5 W	76	MEnc 13	275	65.1	68.7	72.3	72.3	75.9	75.9	79.5	79.5
A-max 16	93-96			41.0	44.6	48.2	48.2	51.8	51.8	55.4	55.4
A-max 16	94/96	MR	260/262	46.0	49.6	53.2	53.2	56.8	56.8	60.4	60.4
A-max 16	94/96	MEnc 13	275	49.1	52.7	56.3	56.3	59.9	59.9	63.5	63.5
RE-max 17	123-126			41.0	44.6	48.2	48.2	51.8	51.8	55.4	55.4
RE-max 17	124/126	MR	260/262	46.0	49.6	53.2	53.2	56.8	56.8	60.4	60.4
EC 16, 15 W	147			55.8	59.4	63.0	63.0	66.6	66.6	70.2	70.2
EC 16, 15 W	147	MR	263	65.9	69.5	73.1	73.1	76.7	76.7	80.3	80.3
EC-max 16, 5 W	165			39.6	43.2	46.8	46.8	50.4	50.4	54.0	54.0
EC-max 16, 5 W	165	MR	263	46.9	50.5	54.1	54.1	57.7	57.7	61.3	61.3
EC-max 16, 2-wire	166			49.1	52.7	56.3	56.3	59.9	59.9	63.5	63.5

Option Ball Bearing



Order Number

Technical Data

	Order Number	Order Number	Order Number	Order Number	Order Number	Order Number	Order Number	Order Number
4.4 : 1	138333	455 : 1	138343	Planetary Gearhead	straight teeth			
5.4 : 1	138334	561 : 1	138344	Output shaft	stainless steel, hardened			
19 : 1	138335	690 : 1	138345	Bearing at output	preloaded ball bearings			
24 : 1	138336	850 : 1	138346	Radial play, 6 mm from flange	max. 0.08 mm			
29 : 1	138337	1621 : 1	138347	Axial play at axial load	< 4 N 0 mm > 4 N max. 0.05 mm			
84 : 1	138338	1996 : 1	138348	Max. permissible axial load	8 N			
104 : 1	138339	2458 : 1	138349	Max. permissible force for press fits	25 N			
128 : 1	138340	3027 : 1	138350	Sense of rotation, drive to output	=			
157 : 1	138341	3728 : 1	138351	Recommended input speed	< 8000 rpm			
370 : 1	138342	4592 : 1	138352	Recommended temperature range	-15 ... +100°C			
				Extended area as option	-35 ... +100°C			
				Number of stages	1 2 3 4 5			
				Max. radial load, 6 mm from flange	10 N 15 N 20 N 20 N 20 N			
				Gearhead values according to sleeve bearing version				