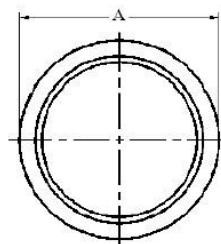
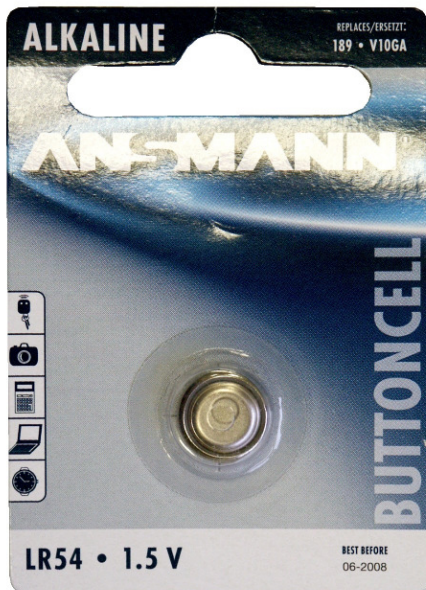
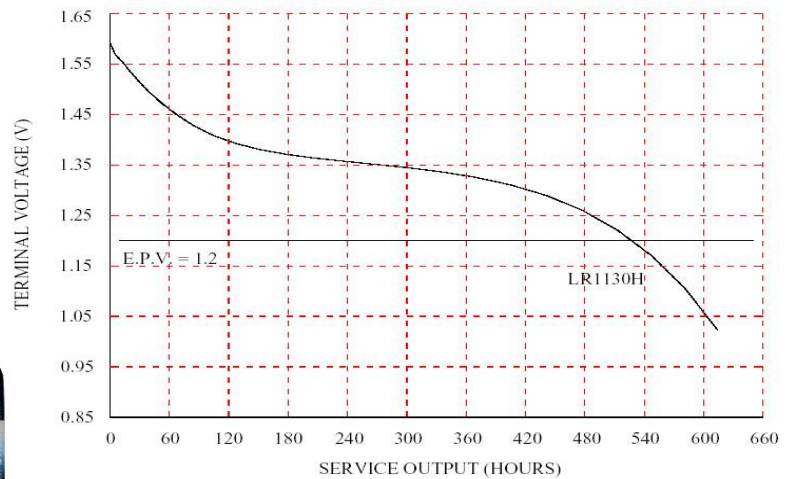


nominal voltage:	1,5V	conditions
off load voltage:	1,55...1,62V	new battery
capacity:		
nominal:	50mAh	continuous discharge at 20°C under 15kohms load, end-point voltage 1,2V
electrical characteristics: (new battery)	≥ 1,53V ≥ 1,52V	off load voltage on load voltage, under 6,8Kohms load, measuring time 0,3s
service output:	520h 470h	new battery (tested within 30 days after delivery) after 12 months storage at room temperature discharge load 15Kohms, daily discharge time 24h, end-point voltage 1,2V
shelf life:	12months 90%	after delivery, under proper storage conditions of the capacity will be maintained after 12 months storage
safety characteristics		
short circuit:	no explosion shall be	at 20°C, short circuit period 24h
chemical system:	Zinc-Manganese Dioxide (Potassium Hydroxide Electrolyte)	

discharge diagram:

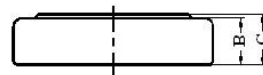
DISCHARGE METHOD : 15kΩ , 24hrs/day
TEMPERATURE : 20 ± 2 °C



Dimensions (in mm) :

Dimensions	Specification
A	∅11.60 ^{+0.00} _{-0.35}
B	2.77 ^{+0.00} _{-0.25}
C	3.05 ^{-0.00} _{-0.30}

weight incl. blister: 2,5g



	specifications for model/type:	Alkaline Button Cell LR54
	Ansmann drawing number / part number:	5015313
	author / date:	Gramlich / 30.01.2008