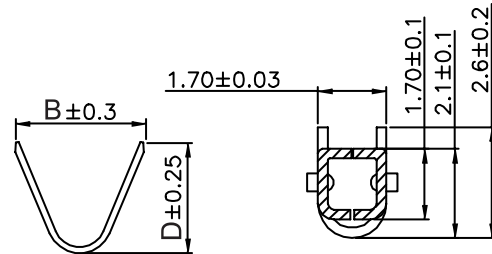


Sections A-A



Sections B-B

Sections C-C

TECHNICAL CHARACTERISTICS

MATERIAL

CONTACT MATERIAL: COPPER ALLOY
 CONTACT TYPE: STAMPED
 CONTACT PLATING: TIN
 QUALITY CLASS: 25 MATING CYCLES
 PITCH: FOR 4.20MM

ENVIRONMENTAL

OPERATING TEMPERATURE: -40 UP TO 105°C
 COMPLIANCE: LEAD FREE AND ROHS

ELECTRICAL

CURRENT RATING: 6 TO 9A
 WORKING VOLTAGE: 600V AC
 INSULATOR RESISTANCE: >1000 MOHM
 DIELECTRIC WITHSTANDING VOLTAGE: 1500V AC/MN
 CONTACT RESISTANCE: 20 MOHM MAX

WIRE DIMENSION

64900113722 AWG 16-22

PACKAGING

REEL OF 4KPCS
 64900113722DEC: 100PCS BAGS

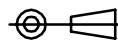
DIMENSION

ORDER CODE	AWG	A	B	C	D
64900113722	16-22	3.70	2.50	4.40	2.40

RoHS Compliant

G			
F			
E			
D			
C	27-FEB-07	PACK REEL 4KPCS	JP
B	23-FEB-07	PDF	EC
A	04-MAY-98	ROHS	JERRY CHEN
REV	DATE	FILE	BY

PROJECTION:



APPROVAL: RJ

GENERAL TOLERANCE

.X = ± 0.2
 .XX = ± 0.15



UNIT: MM

SCALE:

SHEET: 1/1

DRAW: JERRY CHEN

DESCRIPTION: FEMALE TERMINAL

WERI PART NO: 6490 01 13722

SIZE

A4