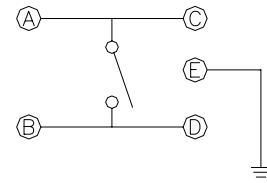
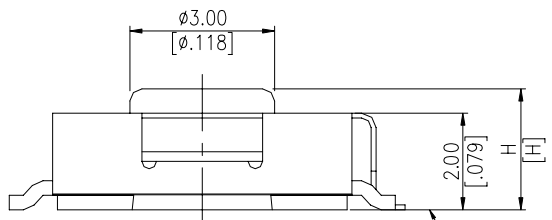
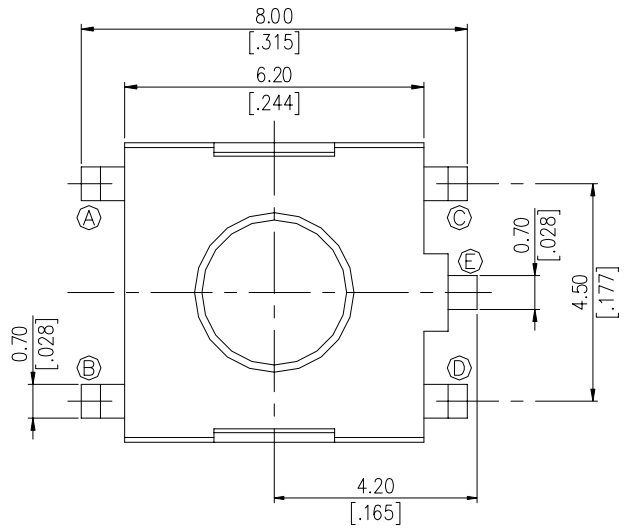


DTSG(G)ZM(P).DTSYH-6 SERIES

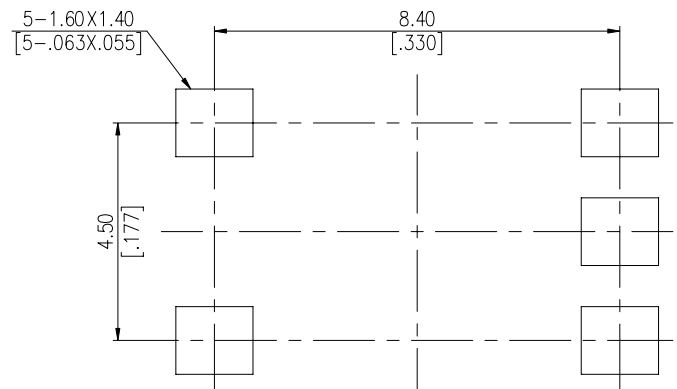


DIMENSIONS

DTSGZM-6



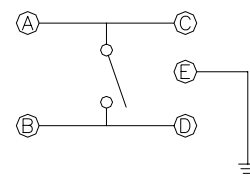
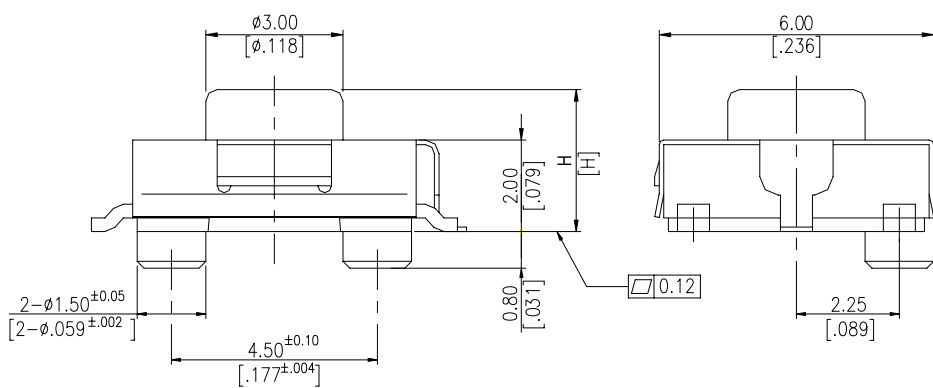
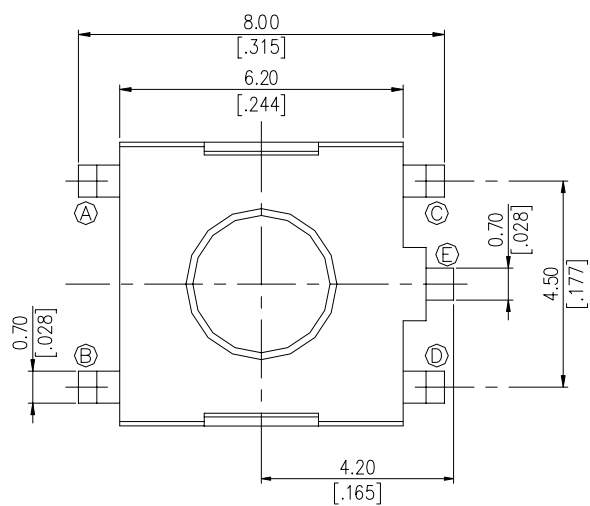
CIRCUIT DIAGRAM



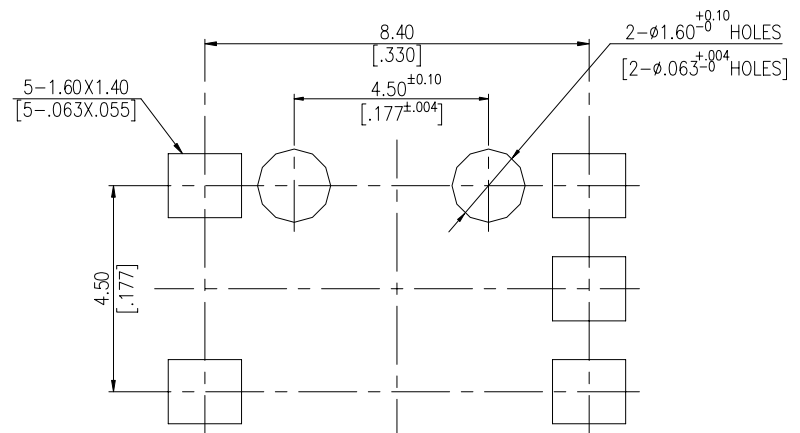
P.C.B. LAYOUT

DTSGZM-62	3.1mm [.122]
DTSGZM-61	2.5mm [.098]
PART NO.	H

DTSGZMP-6



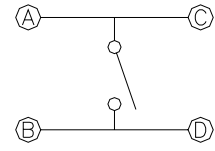
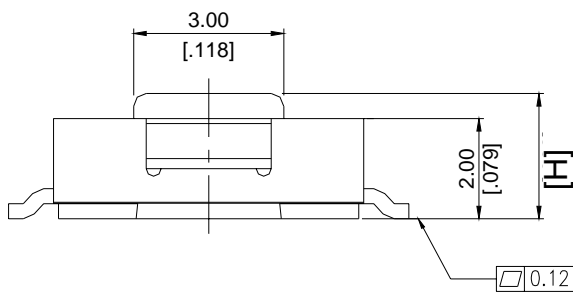
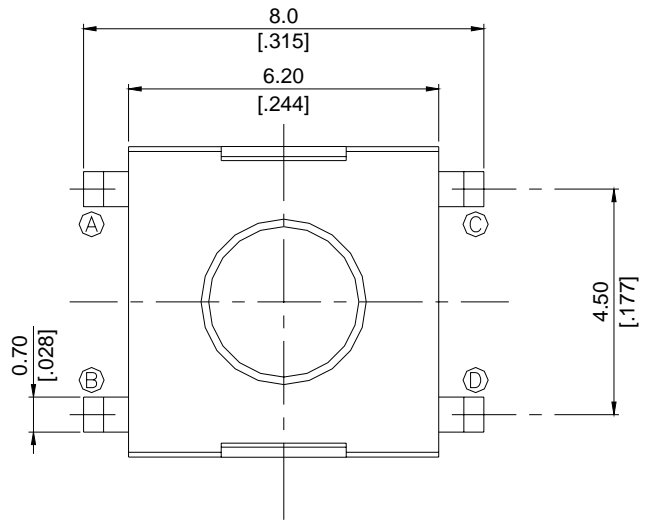
CIRCUIT DIAGRAM



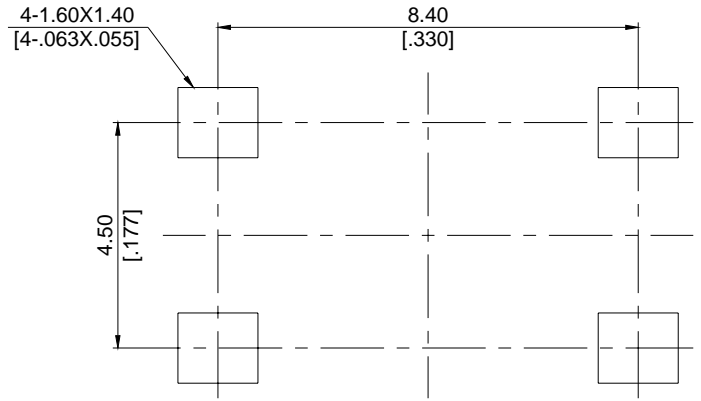
P.C.B. LAYOUT

DTSGZMP-62	3.1 [.122]
DTSGZMP-61	2.5 [.098]
PART NO.	H

DTSZM-6



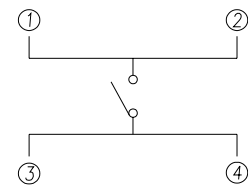
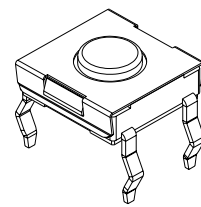
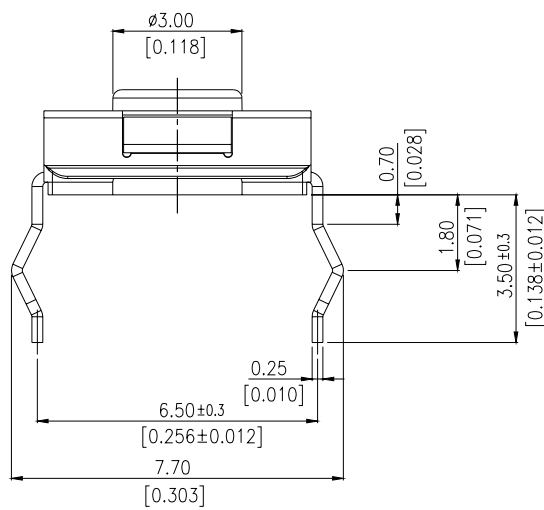
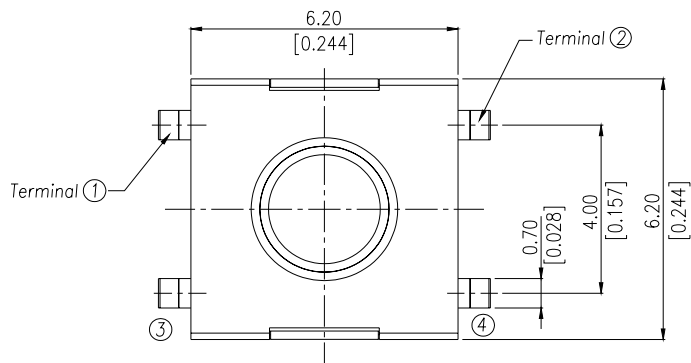
CIRCUIT DIAGRAM



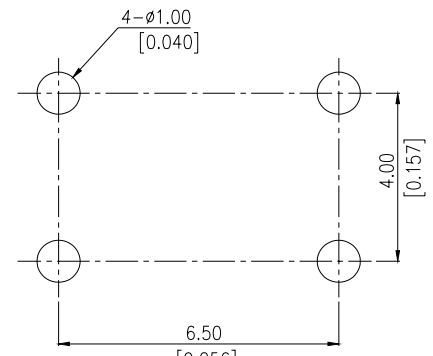
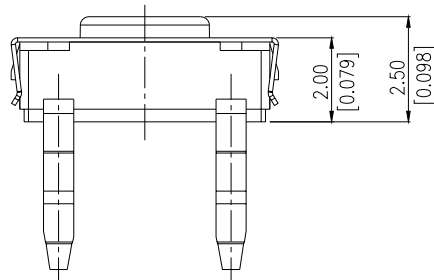
P.C.B. LAYOUT

DTSZM-62	3.1mm[.122]
DTSZM-61	2.5mm[.098]
PART NO.	H

DTSYH-6



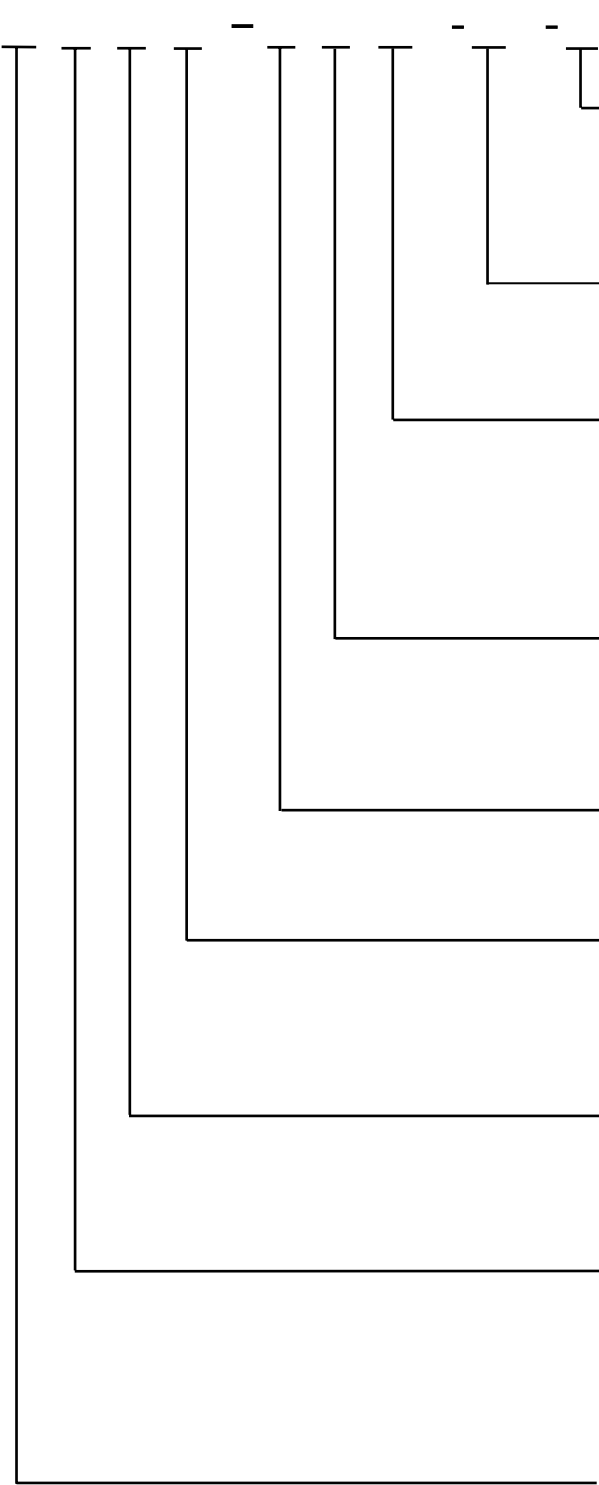
CIRCUIT



P.C.B. LAYOUT

HOW TO ORDER

DTS



Package Style:

B = Tube

T/R = Tape & Reel

Soldering:

V = Lead Free solderable

Color of Stem for Operation Force:

K = Black, 100gf (DTSYH-61)

N = Brown, 160gf

R = Red, 260gf

Height:

1 = 2.5mm

2 = 3.1mm

Prod size

6 = 6X6mm

Alignment Pin

= Without Post

P = With Post (S.M.T Only)

Terminal Type

M = S.M.T

H = Through Hole Terminal

Terminal Pitch

Y = Terminal Pitch 4.0mm

(Through Hole Only)

Z = Terminal Pitch 4.5mm

Product Series:

G = With Ground Terminal

(DTSGZM-6 Only)

= Without Ground Terminal

SPECIFICATION

MECHANICAL

Operation Force: 100±50gf Black(K)

160±50gf Brown(N)

260±50gf Red(R)

Stroke: 0.25+0.2/-0.1mm

Operation Temperature: -25 to +70

Storage Temperature: -30 to +80

ELECTRICAL

Electrical Life: 100,000 cycles for 260gf

200,000 cycles for 100gf,160gf

Rating : 50 mA , 12 VDC

Contact Resistance : 100mΩ max

Insulation Resistance : 100MΩ min , at 500 VDC

Dielectric Strength : 250 VAC / minute

Contact Arrangement : 1 pole 1 throw

MATERIALS

COVER: Stainless steel (DTSYH-6,DTSZM-6)

Nickel Silver (DTSGZM-6)

BASE: UL 94V-0 Nylon High-temp thermoplastic

Color: Black

CONTACT DISC: Stainless steel with silver cladding

TERMINAL: Brass with silver plated

STEM : UL94V-0 Nylon High-temp Thermoplastic

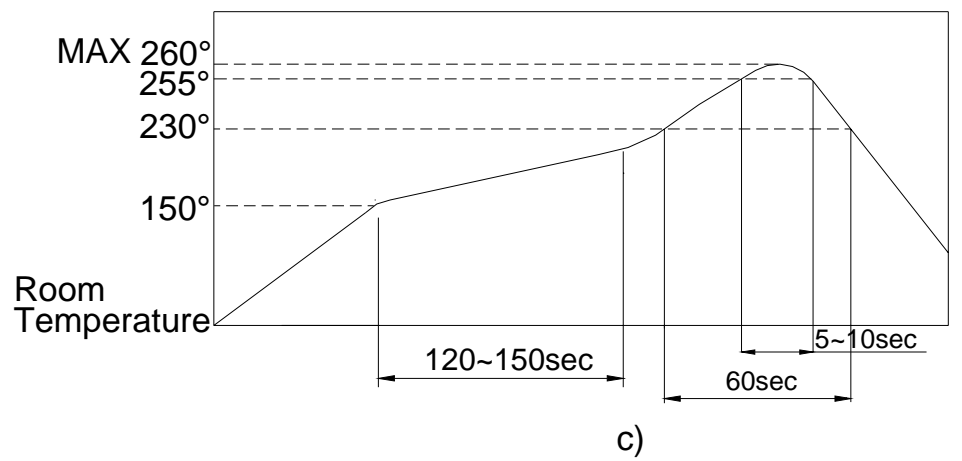
Color : Black(100gf) , Brown(160gf) , Red(260gf) ,

SOLDERING PROCESS

HAND SOLDERING : Use a soldering iron of 30 watts, controlled at 350 approximately max 5 seconds while applying.

REFLOW SOLDERING: When applying reflow soldering, the peak temperature or the reflow oven should be set to 260 max.

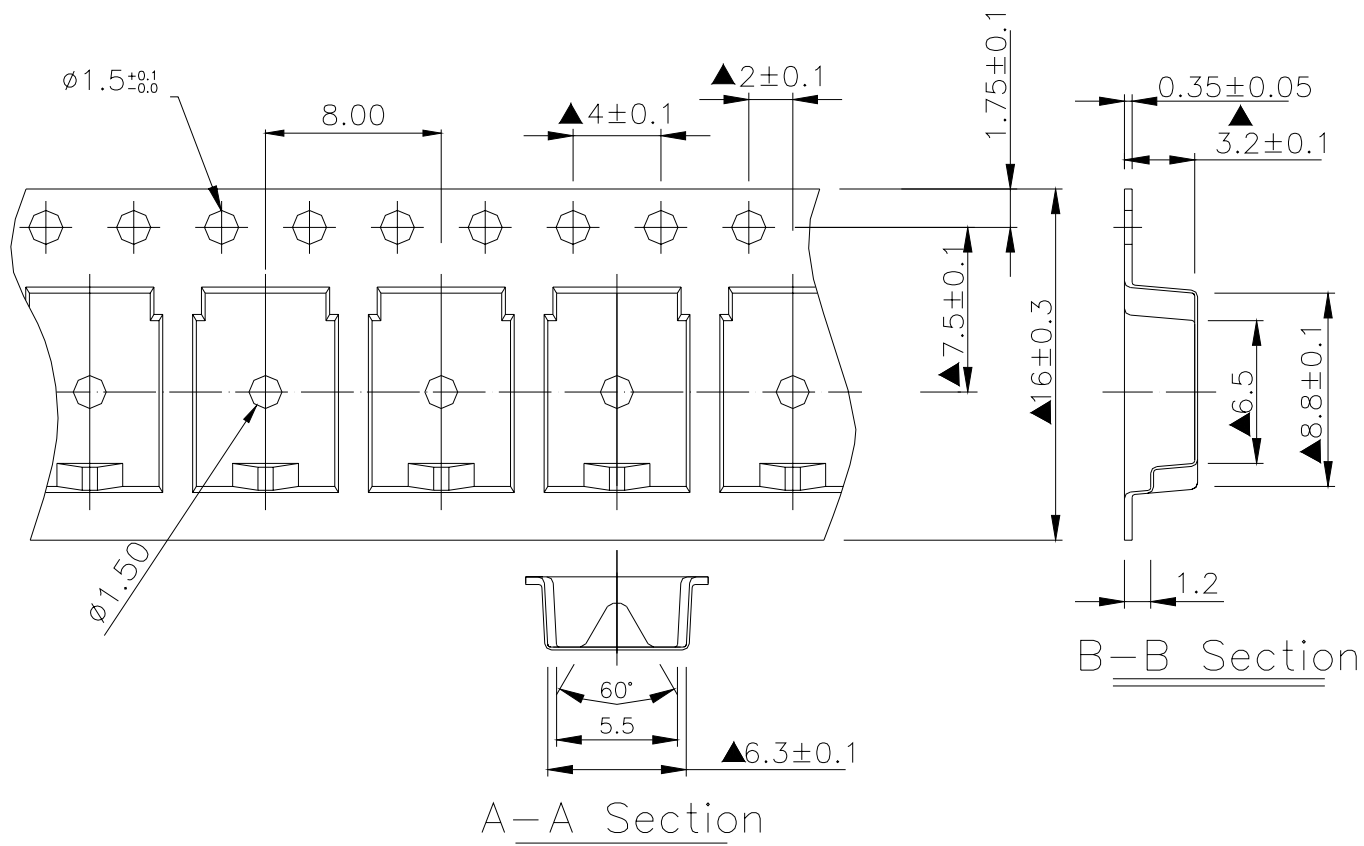
Reflow Temperature Profile:



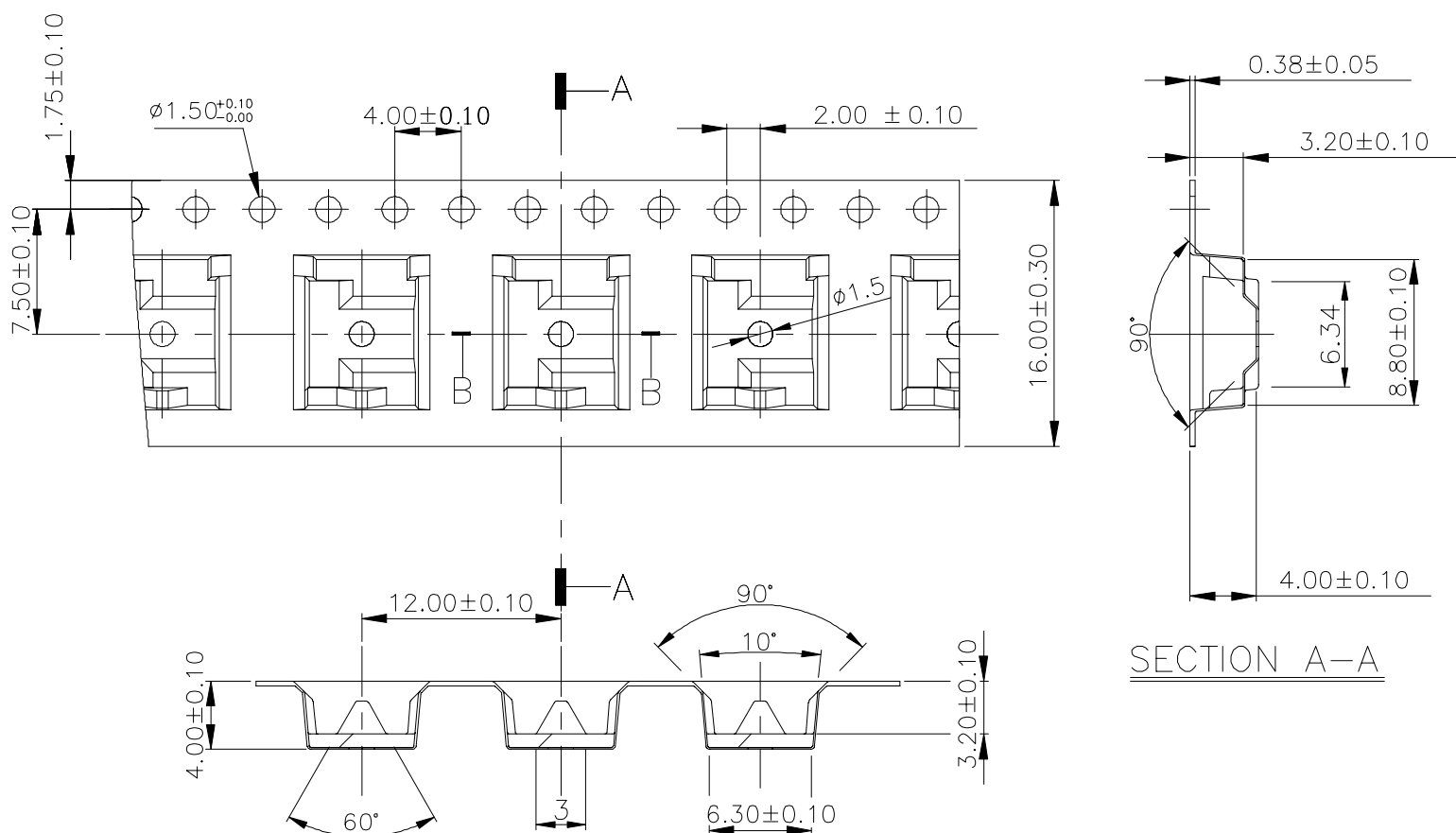
PACKING

Part Number	Number Per Tube	Number Per Reel
DTS(G)ZM-61	75	2500
DTS(G)ZM-62	75	2500
DTSGZMP-61	-	1400
DTSGZMP-62	-	1400
DTSYH-61	75	-

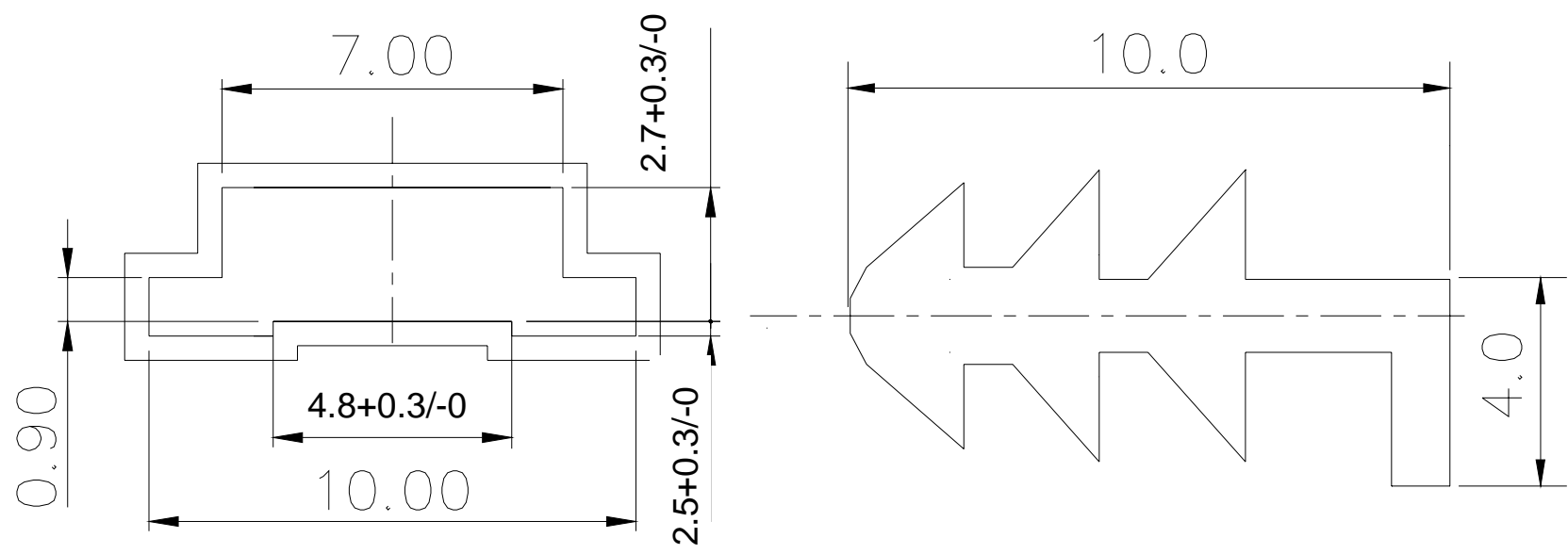
DTSGZM-6 Reel



DTSGZMP-6 Reel



DTSGZM-61 TUBE



DTS(G)ZM-62 TUBE

