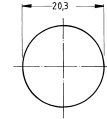


1

Illuminable pushbutton, with lamp socket BA9s (MBC/MCC), mounting hole diameter 20.3 mm, 250 V/2 A



Pict.: with red lens



Mounting hole

Technical data

General information

Form of lens	protruding lens
Colour of lens	see order block
Form of collar	round

Dimensions

Diameter of collar	24 mm
Overall height	9 mm
Mounting depth	45.5 mm
Mounting hole	20.3 mm

Mechanical design

Mounting	ring nut
Terminals	solder/quick connect terminals 2.8 x 0.8 mm
Contact system	bridge contact
Contact function	momentary
Contact arrangement	see order block
Contact materials	Ag
Illuminability	yes
Lamp socket	BA 9 s

Mechanical characteristics

Operating force max.	10 N
Operating travel	3.6 mm
Switching travel NC	0.8 mm
Switching travel NO	2.9 mm
Robustness min.	100 N

Electrical characteristics

Rated voltage AC max.	250 V
Rated current max.	2 A
Contact resistance acc. to life max.	200 mΩ

Other specifications

Operating life	100000
Degree of protection from front side	IP40 (IP65 with sealing cap)
Ambient temp. operating min.	-25 °C
Ambient temp. operating max.	+85 °C
Storage temperature min.	-40 °C
Storage temperature max.	+90 °C
Resistance to constant environment	according to IEC 600 68-2-3 and 2-30
Resistance at variable environment	according to IEC 600 68-2-14 and 2-33
Weight	18 g
Approvals	ENEC 25 T 55 (85)
Flame class acc. to UL 94	V 0
Hot wire ignition acc. to IEC 60695-2-1	yes

Other Pushb.

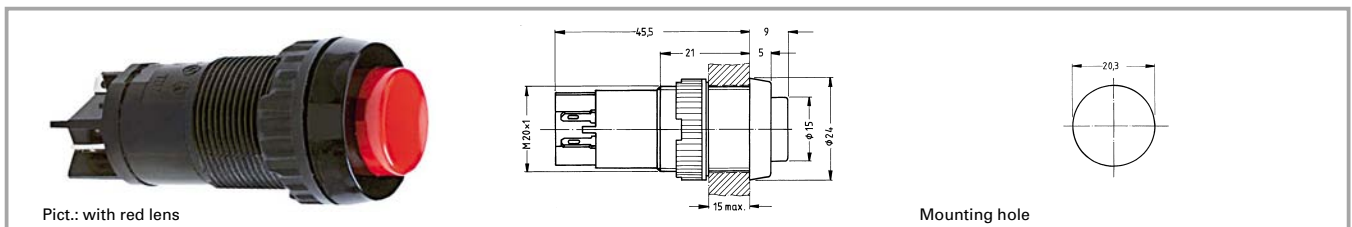
Accessories Illuminable pushbutton, with lamp socket BA9s (MBC/MCC), mounting hole diameter 20.3 mm, 250 V/2 A

Description	Photo	Order no.	Page
Filament lamp, BA 9s base (MBC/MCC), 12 - 15 V		1.90.060.003/0000	5 - 7
Filament lamp, BA 9s base (MBC/MCC), 24 - 30 V		1.90.060.014/0000	5 - 7
LED BA 9s (MBC/MCC) superbright, red, 24 V		1.90.690.341/0000	5 - 19
LED BA 9s (MBC/MCC) superbright, green, 24 V		1.90.690.342/0000	5 - 19

Accessories Illuminable pushbutton, with lamp socket BA9s (MBC/MCC), mounting hole diameter 20.3 mm, 250 V/2 A

Description	Photo	Order no.	Page
LED BA 9s (MBC/MCC) superbright, yellow, 24 V		1.90.690.343/0000	5 - 19
LED BA 9s (MBC/MCC) superbright, blue, 24 V		1.90.690.344/0000	5 - 19
LED BA 9s (MBC/MCC) superbright, white, 24 V		1.90.690.345/0000	5 - 19
Silicone sealing cap (IP65)		5.52.008.065/0000	
Protective sleeve for terminals		5.52.011.030/0100	
Fixing spanner M 20, M 22, for ring nut		5.58.002.018/0105	5 - 23

Illuminable pushbutton, with lamp socket BA9s (MBC/MCC), mounting hole diameter 20.3 mm, 250 V/2 A



Contact function	Contact arrangement	Order no. without lens	Note
momentary	1 NC + 1 NO	1.15.112.121/0000	Please include the desired lens in your order.
momentary	1 NO	1.15.112.101/0000	Please include the desired lens in your order.

Technical data see page 1 - 84

Lenses:

- Lens, transparent colourless: 5.49.205.008/1002
- Lens, transparent red: 5.49.205.008/1303
- Lens, transparent yellow: 5.49.205.008/1402
- Lens, transparent green: 5.49.205.008/1502

1
Other Pushb.