

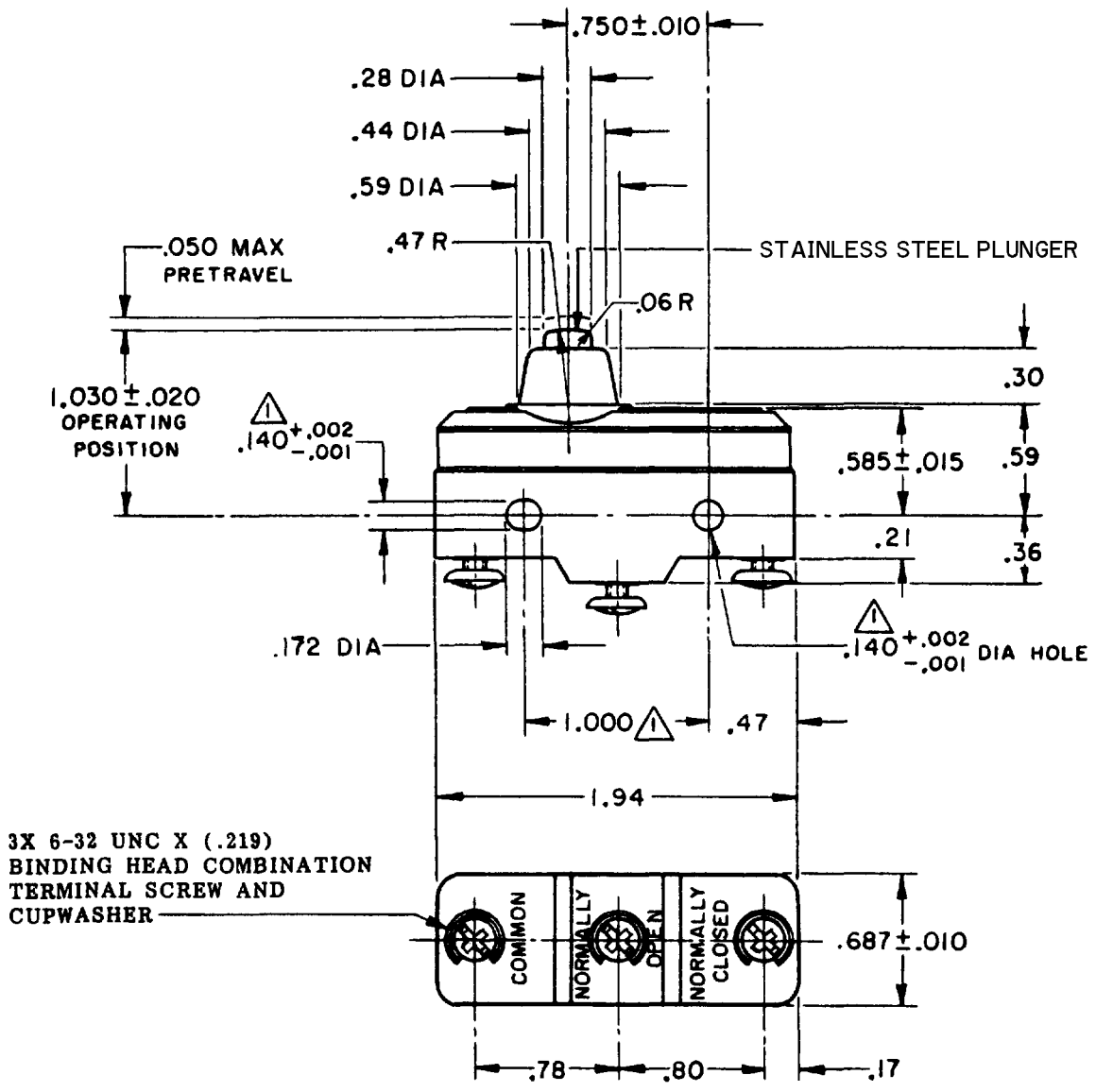
MICRO SWITCH

A DIVISION OF MINNEAPOLIS-HONEYWELL REGULATOR COMPANY
 MINNEAPOLIS, MINNESOTA
 FED. MFR. CODE 91929

SWITCH - BASIC

CATALOG LISTING
BA-2RB-A2

CATALOG LISTING
BA-2RB-A2
 PAGE 1 OF 1
 ISSUE 7
 DRAWING NUMBER
 REVISIONS
 A CO 9600
 29 APR 60
 B CO34310
 20 DEC 74
 C CO-73287-J
 22 NOV 93
 D CO-77590
 8 JUN 94
 E CO93346
 22 AUG 98
 F CO-95750-B
 29 MAR 00
 GCH 9 MAY 60
 FORMTEK
 3-50378
 DRAWN
 R E R 29 APR 60 CHECK
 GCH 9 MAY 60 CHECK
 (M)BA-2RB-A2
 ISSUE 1
 REPLACES
 RELEASE NO.



3X 6-32 UNC X (.219)
 BINDING HEAD COMBINATION
 TERMINAL SCREW AND
 CUPWASHER

NOTE
 ▲ MOUNTING HOLES WILL ACCEPT PINS OR SCREWS
 OF .139 MAX DIA ON 1.000 ± .002 CENTERS

THIS DRAWING COVERS A PROPRIETARY ITEM AND IS THE PROPERTY OF MICRO SWITCH, A DIVISION OF MINNEAPOLIS-HONEYWELL REGULATOR CO. THIS DRAWING IS NOT TO BE COPIED OR USED WITHOUT THE APPROVAL OF MICRO SWITCH.

CHARACTERISTICS	ELECTRICAL DATA	SCALE FULL
OPERATING FORCE - - - - - 14-22 OZ	CONTACT ARRANGEMENT S P D T	DO NOT SCALE PRINT
RELEASE FORCE - - - - - 10 OZ MIN	L23 UNDERWRITERS' LAB. INC. LISTED RATING 20A - 125, 250 OR 480 VAC 10A - 125 VAC "L"	UNLESS OTHERWISE SPECIFIED DIMENSIONS ARE IN INCHES
DIFFERENTIAL TRAVEL - - - .002-.0075	L288 1HP - 125 VAC, 2HP - 250 VAC	TOLERANCES ARE:
OVERTRAVEL - - - - - .094 MIN	L299 1/2A - 125 VDC, 1/4A - 250 VDC	ONE PLACE (.) ±.030
	L308	TWO PLACE (.) ±.015
	CE D SA	THREE PLACE (.000) ±.008
	20(3)A 250V ~ T85 5E4	ANGLES ±
		WEIGHT .064 LB