

MICRO SWITCH

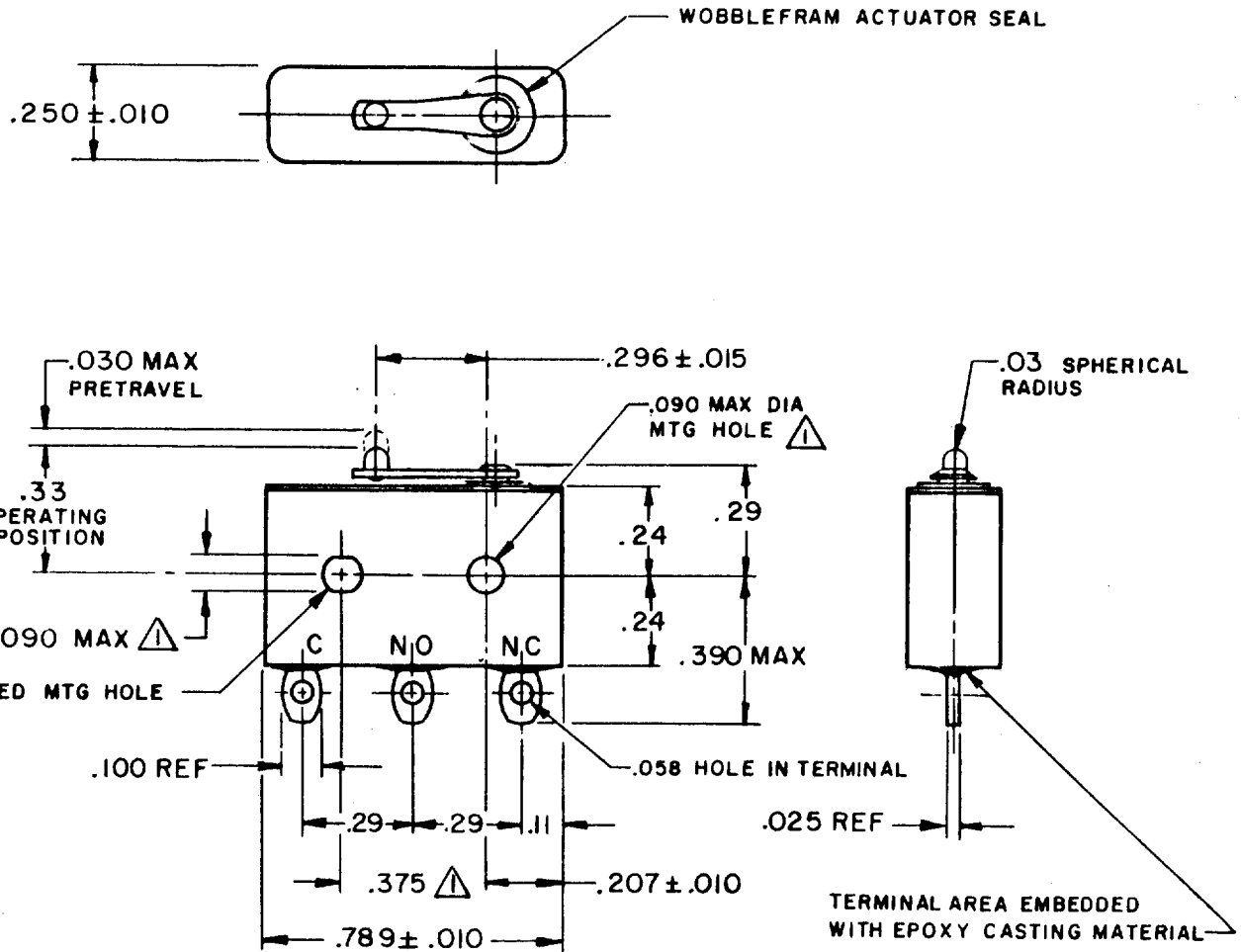
FREERPORT ILLINOIS, U.S.A
A DIVISION OF HONEYWELL
FED. MFG. CODE 81929

SWITCH - BASIC

CATALOG LISTING

9HM1

MILITARY STANDARD
MS 27216-6



NOTE -

- ▲ MOUNTING HOLES WILL ACCEPT PINS OR SCREWS OF $.087$ MAX DIA ON $.375 \pm .002$ CENTERS
- 2 - FOR USE IN TEMPERATURE RANGE -300°F TO $+250^{\circ}\text{F}$
- 3 - HERMETICALLY SEALED (METAL-TO-METAL, GLASS-TO-METAL)
- 4 - ALL EXPOSED PARTS ARE OF CORROSION RESISTANT MATERIALS
- 5 - TERMINALS ARE TINNED FOR SOLDERING
- 6 - DO NOT APPLY MORE THAN $11/2$ INCH-POUNDS OF TORQUE WHEN TIGHTENING MOUNTING SCREWS
- 7 - 24K GOLD MOVABLE CONTACT
- 8 - GOLD ALLOY STATIONARY CONTACTS

THIS DRAWING COVERS A PROPRIETARY ITEM AND IS THE PROPERTY OF MICRO SWITCH, A DIVISION OF HONEYWELL. THIS DRAWING IS NOT TO BE COPIED OR USED WITHOUT THE APPROVAL OF MICRO SWITCH.

CHARACTERISTICS

OPERATING FORCE ----- 7 OZ MAX
RELEASE FORCE ----- 1 OZ MIN
DIFFERENTIAL TRAVEL ----- .006 MAX
OVERTRAVEL ----- .003 MIN

ELECTRICAL DATA

CONTACT ARRANGEMENT
SPDT
28 VOLTS DC RATING
INDUCTIVE ----- SEA LEVEL - $1/4$ AMP
70,000 FT - $1/4$ AMP
RESISTIVE ----- SEA LEVEL - $1/2$ AMP
70,000 FT - $1/2$ AMP

SCALE 2 TO 1

DO NOT SCALE PRINT
UNLESS OTHERWISE NOTED
DIMENSIONS ARE IN INCHES
TOLERANCES ARE
ONE PLACE (.0) $\pm .030$
TWO PLACE (.00) $\pm .015$
THREE PLACE (.000) $\pm .005$
ANGLES \pm
WEIGHT .014 LB MAX

9HM1
 M
 DRAWING NUMBER
 6
 ISSUE
 8
 REVISIONS
 A CO-32230 BEN 23 JUL 73
 B PR-3902 D B W 23 JAN 74
 C CO-33914 G L H 31 OCT 74
 D CO-45333 S J B 4 MAY 79
 E CO-71228 D A W 1 NOV 91
 CHECK 27 JUNE 72
 CHECK 26 JUNE 72
 CHECK 26 JUNE 72
 DRAWN GM 26 JUN 72
 FO-52848