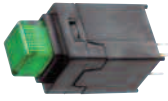


SERIES 39:



ACTUAL SIZE



0.25 AMP MINIATURE LED LIGHTED PUSHBUTTON SWITCHES

This highly reliable low cost pushbutton features bifurcated contacts that have wiping, self-cleaning action. The PC terminals allow for vertical mounting, while an optional connector allows for right angle mounting.

KEY FEATURES:

- Momentary or maintained action
- Lighted (T-1 LED) or non-lighted
- Variety of button and keycap styles
- Wave solderable
- Bifurcated silver contacts

APPLICATIONS

- Control panel assemblies
- Recording equipment
- Telecom switching systems
- Scientific instrumentation
- Telecom test gear

ORDERING INFORMATION:

Switches

Part Number	Lighted	LED Color	Button Color	Button Style	Action
39-12101	Yes*	—	Clear	Button	Momentary
39-12111	Yes*	—	Red	Button	Momentary
39-12113	Yes*	—	Yellow	Button	Momentary
39-12114	Yes*	—	Smoke Grey	Button	Momentary
39-12502	No	—	White	Button	Momentary
39-12503	No	—	Red	Button	Momentary
39-12509	No	—	Black	Button	Momentary
39-12601	Yes	Red	Clear	Button	Momentary
39-12611	Yes	Red	Red	Button	Momentary
39-12712	Yes	Green	Green	Button	Momentary
39-12801	Yes	Yellow	Clear	Button	Momentary
39-12813	Yes	Yellow	Yellow	Button	Momentary
39-13101	Yes*	—	Clear	Button	Maintained
39-13113	Yes*	—	Yellow	Button	Maintained
39-13611	Yes	Red	Red	Button	Maintained
39-22100	Yes*	—	—	Keycap	Momentary
39-22500	No	—	—	Keycap	Momentary
39-23100	Yes*	—	—	Keycap	Maintained
39-23500	No	—	—	Keycap	Maintained

* LED not included; LED support 80-390003 supplied in bulk.

Button/Keycap Colors

Part Number	Lighted	Color	Cap Size
80-390101	Yes*	White	Large
80-390102	Yes*	Light Grey	Large
80-390103	Yes*	Dark Grey	Large
80-390104	Yes*	Black	Large
80-390106	No	Light Grey	Large
80-390107	No	Dark Grey	Large
80-390108	No	Black	Large
80-390110	Yes**	Light Grey	Small
80-390111	Yes**	Black	Small
80-390112	No	Light Grey	Small

* Requires light pipe 80-390100 (order separately)
** Requires light pipe 80-390109 (order separately)

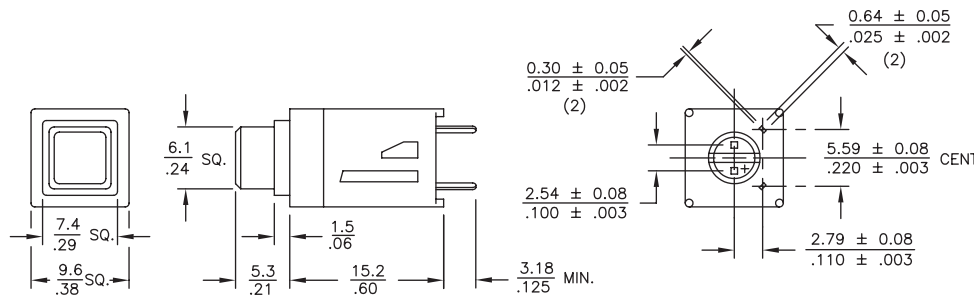
Connectors

Part Number	Mount
39-800001	In-Line
39-800002	Right Angle

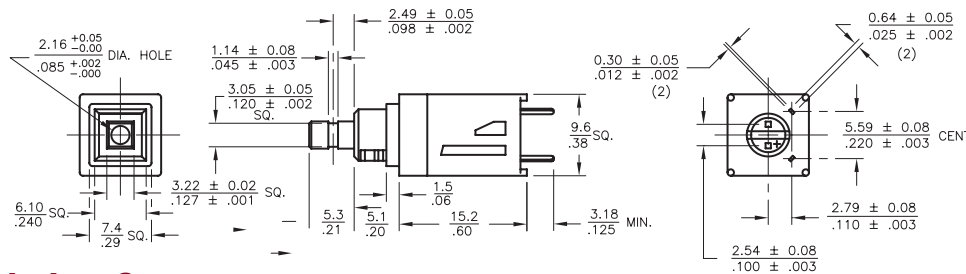
STANDARDS / AGENCY / RATINGS:



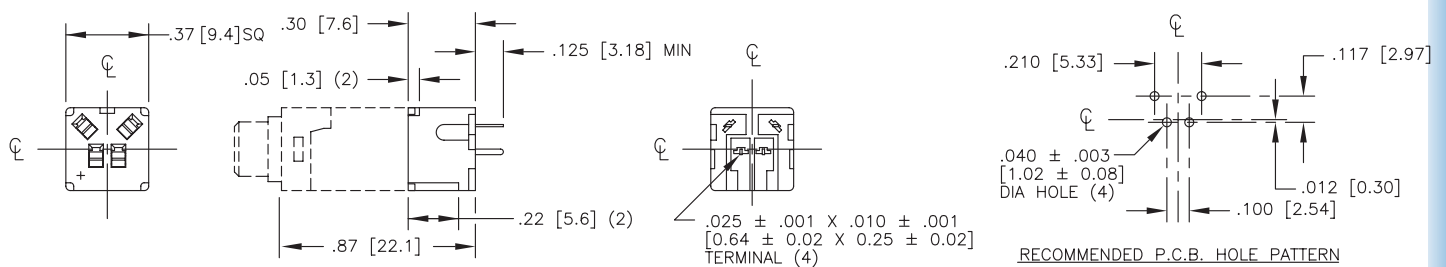
STANDARD BUTTON STYLE



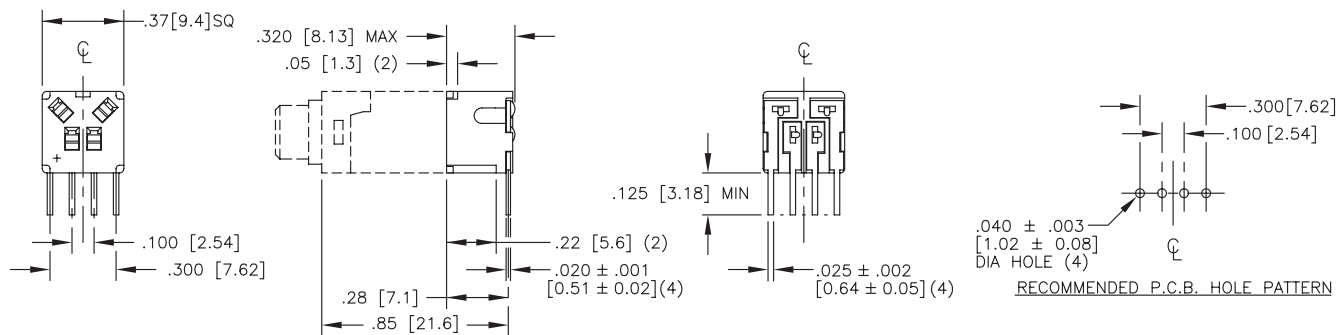
KEYCAP BUTTON STYLE



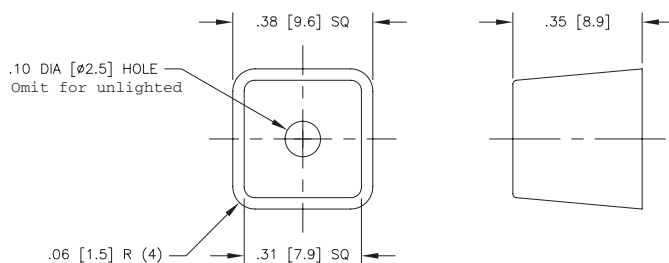
IN-LINE CONNECTOR



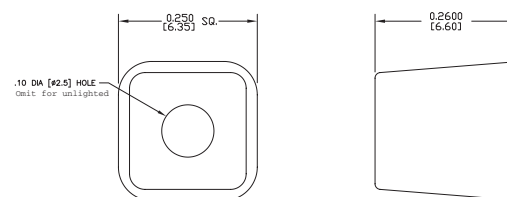
RIGHT ANGLE CONNECTOR



LARGE LIGHTED & UNLIGHTED KEYCAP



SMALL LIGHTED & UNLIGHTED KEYCAP



MECHANICAL / ELECTRICAL CHARACTERISTICS:

- Action:**
SPST-NO-DB (Form X)
- Button travel:**
3.05 mm (.120 in) nominal
- Operating Force:**
113 grams nominal
- Contact Resistance:**
Initial: 25 mΩ max.
End of life: 50 mΩ max.
- Contact bounce:**
Initial: 1 millisecond max.
End of life 3 milliseconds max.
- Electrical life:**
Momentary: 1 million cycles
Maintained: 25,000 cycles
- Electrical rating:**
.25A @ 30 VDC res.