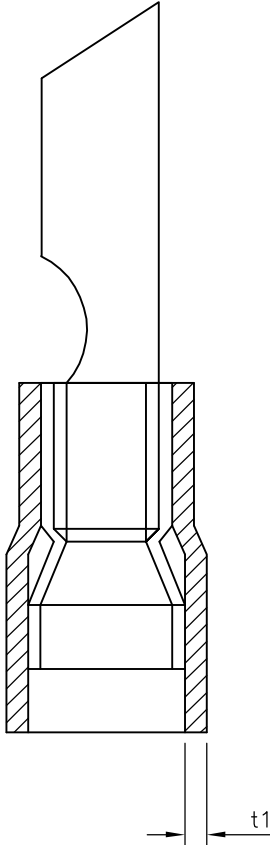
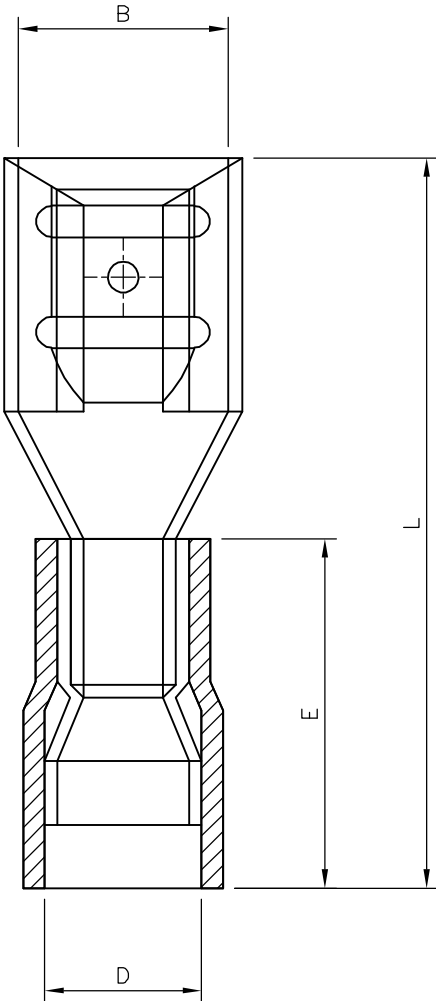
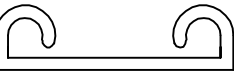



LOC	DIST	REVISIONS					
		P	LTR	DESCRIPTION	DATE	DWN	APVD
E	B		A	FIRST ISSUE	18AUG05	KR	FWK



- NOTES:
- FOR TECHNICAL DATA REFER TO YOUR LOCAL TYCO ELECTRONICS SALES OFFICE.
 - ALL DIMENSIONS ARE NOMINAL FOR REFERENCE ONLY UNLESS OTHERWISE STATED.
 - FOR PACKAGING DETAILS SEE SHEET 2
 - MATERIAL: BODY – BRASS
SLEEVE – PVC (K65), 94V-0
 - APPLICATION SPEC 114-13196

2-1838214-0	1.5mmsq – 2.5mmsq 16-14(AWG)	4.8X0.8mm STANDARD ENTRY	BLUE FEMALE PUSH-ON TERMINAL (INSULATED)	3000	1000	5.00	20.00	4.90	11.00	0.40	0.80	1.5mmsq – 2.5mmsq 16-14(AWG)	4.80 X 0.8	BLUE FEMALE PUSH-ON TERMINAL (INSULATED)	2-1838214-0	
1-1838214-0				3500	100										1-1838214-0	
STOCK NUMBER	PACKING LABEL DESCRIPTION LINE 3	PACKING LABEL DESCRIPTION LINE 2	PACKING LABEL DESCRIPTION LINE 1	INNER CARTON QTY	QTY	B (±0.30)	L (±1.50)	D (±0.50)	E (±0.50)	t (±0.10)	t1 (±0.20)	WIRE SIZE (mmsq) & (AWG)	SIZE (mm)	DESCRIPTION	PART No	
						DIMENSIONS										
THIS DRAWING IS A CONTROLLED DOCUMENT.																
<div>DIMENSIONS: mm</div> <div></div>						<div>TOLERANCES UNLESS OTHERWISE SPECIFIED:</div> <div>0 PLC ± 0.5 1 PLC ± 0.2 2 PLC ± 0.1 3 PLC ± 0.015 4 PLC ± - ANGLES ± -</div>						DWN K.Raghunandan 18AUG05	<div>tyco <i>Electronics</i></div> <div>Tyco Electronics Corporation Bideford, UK, EX39 4HE</div>			
												CHK S. Parlow 02/04/07				
<div>MATERIAL -</div>						<div>FINISH -</div>						APVD F. Wheeler-King 02/04/07	NAME			
												PRODUCT SPEC -	EURO-CRIMP INSULATED BLUE FEMALE PUSH-ON TERMINAL 1.5mmsq – 2.5mmsq / 16-14 AWG RANGE			
												APPLICATION SPEC -	SIZE			
												WEIGHT -	CAGE CODE			
												DRAWING NO				
												RESTRICTED TO				
												A2 00779 C=1838214				
												SCALE				
												NTS				
												SHEET				
												1 OF 2				
												REV				
												A				

