

CUSTOMER: S068
PART NUMBER: T3717ST



APPROVAL SHEET

OF

SWITCHING ADAPTER

MODEL NO.

DSA-0421S-12 2 42

ORDER NO: YS3-00072

承認書确认后請簽回一份

| | | | |
|-----------------------------|--|--|--|
| CUSTOMER APPROVED SIGNATURE | | | |
| | | | |

DEE VAN ENTERPRISE CO., LTD (Head-Quarter)

NO. 5, PAO-KAO RD, HSIN-TIEN, TAIPEI COUNTY, TAIWAN, R.O.C
TEL: +886-2-2917-7002 (12 LINES), FAX: +886-2-2915-4370, +886-2-2918-7244

DEE VAN ELECTRONICS (SHEN ZHEN) CO., LTD (Factory)

5 th Industrial District, Gong Ming Town, Baoan County, Shen Zhen, Guang Dong, CHINA
TEL: +86-755-2773-6530 ~ 7, FAX: +86-755-2773-6538 ~ 9

CONTENT OF APPROVAL SHEET

| | |
|---|------------|
| 0. REVISION CONTROL LIST ----- | 3 |
| 1. SPECIFICATION ----- | 4-7 |
| 0. REVISION CHANGE DESCRIPTION ----- | 4 |
| 1. GENERAL DESCRIPTION ----- | 4 |
| 2. INPUT REQUIREMENT ----- | 4 |
| 3. OUTPUT REQUIREMENT ----- | 5 |
| 4. MECHANICAL REQUIREMENT ----- | 5 |
| 5. ENVIRONMENTAL REQUIREMENT----- | 6 |
| 6. SAFETY REQUIREMENT ----- | 6 |
| 7. RELIABILITY ----- | 7 |
| 2. RATING LABEL DRAWING ----- | 8 |
| 3. DC OUTPUT CORD DRAWING ----- | 9 |
| 4. PRODUCT OUTLINE DRAWING ----- | 10 |
| 5. PACKING DRAWING ----- | 11 |

| APPROVAL BY | SAFETY | DIRECTOR | ENGINEER | PREPARED |
|------------------|--------|-------------------|-------------------|-------------------|
| 周軍 2005/12/08 | / | 鄧俊高 2005/12/08 | 姜海濤 2005/12/08 | 葛米芝 2005/12/06 |

0. REVISION CONTROL LIST

| DATE | REVISION CONTROL ITEMS | | | | | |
|-------------|---------------------------|---------------|----------------------|------------------------|-------------------------|-----------------|
| | CONTENT OF APPROVAL SHEET | SPECIFICATION | RATING LABEL DRAWING | DC OUTPUT CORD DRAWING | PRODUCT OUTLINE DRAWING | PACKING DRAWING |
| 2005,12, 06 | A | A | A | A | A | A |

REVISION CHANGE DESCRIPTION

| ITEM | REV | DESCRIPTION |
|------|-----|-------------|
| | | |

1. SPECIFICATION

-- 1 / 4

0. REVISION CHANGE DESCRIPTION

| Revision | Description | Date |
|----------|-----------------|------------|
| A | Initial release | 2005,12,06 |
| | | |

1. GENERAL DESCRIPTION

This specification defines the input, output, performance characteristics, environment, noise and safety requirements for a 42 watts switching type power adapter. The adapter input/output are full range AC input and +12.0V DC with 42 watts maximum output.

2. INPUT REQUIREMENT

2-1 AC INPUT VOLTAGE

| MINIMUM | NOMINAL | MAXIMUM |
|---------|---------------|---------|
| 90 VAC | 100 – 240 VAC | 264 VAC |

2-2 AC INPUT FREQUENCY

| MINIMUM | NOMINAL | MAXIMUM |
|---------|------------|---------|
| 47 Hz | 50 / 60 Hz | 63 Hz |

2-3 AC INPUT CURRENT

| | |
|---------------|---------------|
| 115 VAC INPUT | 1.0 A maximum |
| 230 VAC INPUT | 0.6 A maximum |

2-4 AC INRUSH CURRENT

AT FULL LOAD, 25 DEGREE C, COLD START

| | |
|---------------------|---|
| 115 VAC, 60Hz INPUT | No damage shall be occurred and the input fuse shall not be blown up. |
| 230 VAC, 50Hz INPUT | |

2-5 PRIMARY CURRENT PROTECTION

An adequate internal fuse on the AC input line is provided.

2-6 CONFIGURATION

2 Conductor, < Live, Neutral >

2-7 POWER CONSUMPTION ON POWER SAVING MODE

| LOAD | INPUT CONDITION | INPUT POWER REQUIREMENT |
|------|-----------------|-------------------------|
| 0 A | 110 VAC 60 Hz | 0.50 W maximum |
| | 230 VAC 50 Hz | 0.75 W maximum |

1. SPECIFICATION

-- 2 / 4

3. OUTPUT REQUIREMENT

| | | |
|------|--------------------------|---|
| 3-1 | DC OUTPUT VOLTAGE | + 12.0 V |
| 3-2 | MINIMUM LOAD CURRENT | 0 A |
| 3-3 | MAXIMUM LOAD CURRENT | 3.5 A |
| 3-4 | MAXIMUM OUTPUT POWER | 42 W |
| 3-5 | TOTAL OUTPUT REGULATION | +/- 5 % |
| 3-6 | LINE REGULATION | +/- 2 % |
| | | At nominal input voltage and full load |
| 3-7 | RIPPLE AND NOISE | 120 mVp-p maximum |
| | | At 20 MHz, and output parallel with 0.1uF & 47uF capacitors to ground Temperature at 25 °C, and 115V/230V AC input voltage |
| 3-8 | EFFICIENCY | 80% minimum |
| | | At nominal input voltage and full load |
| 3-9 | DROP-OUT | With half cycle input voltage drop-out, the unit shall operate within the prescribed voltages with a drop-out pulse repetition rate of 500mS. Conditions: Full load and nominal input AC voltage Limits: Meet the regulation requirement |
| 3-10 | PROTECTION | |
| | OVER-CURRENT PROTECTION | 7 A maximum with auto-recovery function |
| | OVER-VOLTAGE PROTECTION | 21 VDC maximum with zener clamp |
| | SHORT-CIRCUIT PROTECTION | The adapter shall not be damaged by short the DC output to Ground. |
| | OPEN CIRCUIT PROTECTION | When primary power is applied with no load on any output level, no components damaged or hazardous conditions should be occurred. |
| 3-11 | REMARK | Unless otherwise specification output load Must be set at CC mode. |

4. MECHANICAL REQUIREMENT

4-1 DIMENSION

115.2 (L) * 58.5 (W) * 33.8 (H) mm maximum

1. SPECIFICATION

-- 3 / 4

4-2 WEIGHT

290 g maximum

4-3 INPUT PLUG TYPE

2-PIN

4-4 OUTPUT CORD

WIRE: 18AWG/2C,1800 mm

PLUG: JACK PLUG 5.5*2.1*12mm

5. ENVIRONMENTAL REQUIREMENT

5-1 COOLING

Cooling shall be with natural convection cooling

5-2 OPERATING TEMPERATURE

0 °C TO 40 °C

5-3 STORAGE TEMPERATURE

-20 °C TO +60 °C

5-4 OPERATING HUMIDITY

20 ~ 85 % RH. NON-CONDENSING

5-5 STORAGE HUMIDITY

5 ~ 95 % RH. NON-CONDENSING

6. SAFETY REQUIREMENT

6-1 DIELECTRIC WITHSTANDING VOLTAGE TEST (HI-POT TEST)

Primary To Secondary: 3000VAC 10mA 1 minute or 4242VDC 10mA 1 minute.

6-2 INSULATION RESISTANCE

Insulation resistance shall be more than 100M Ω at 500Vdc between Primary Live, Neutral line and secondary.

6-3 LEAKAGE CURRENT

0.25mA maximum, at nominal AC input voltage and frequency

6-6 COMPLY SAFETY STANDARDS

Designed to meet CE

6-4 EMI STANDARDS

Designed to meet CE

1. SPECIFICATION

-- 4 / 4

7. RELIABILITY

7-1 MEAN TIME BETWEEN FAILURE (MTBF)

The power supply shall be designed and produced to have a mean time between failures (MTBF) of 50000 operating hours at 90% confidence-level while operating under the following conditions:80% maximum load at 25°C, nominal input voltage.

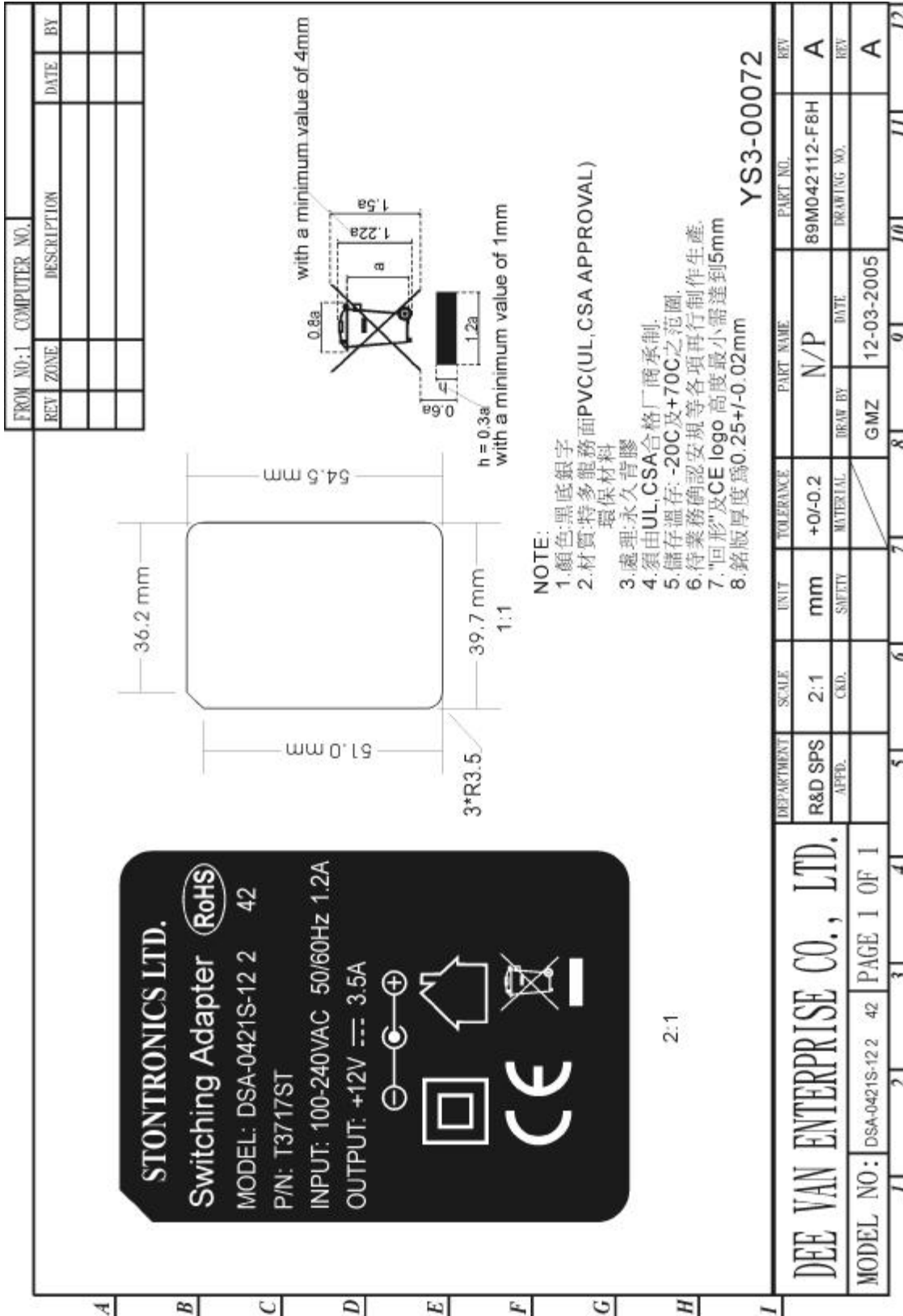
Standard:MIL-HDBK-217F

7-2 BURN-IN TEST

4 hours at 40°C maximum, nominal input voltage, 80% of maximum load.

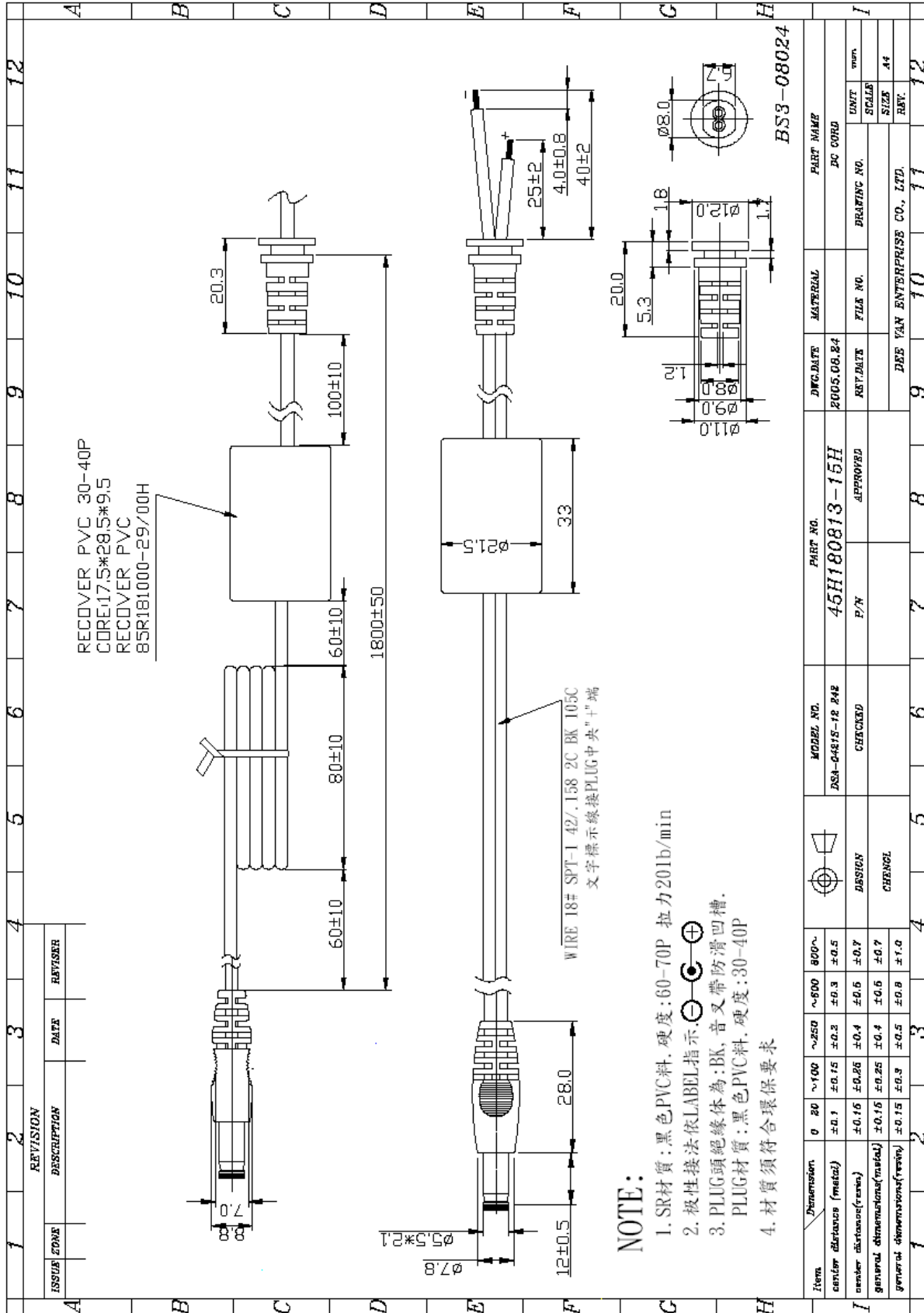
2. RATING LABEL DRAWING

-- 1 / 1



3.DC OUTPUT CORD DRAWING

-- 1 / 1



| Item | Dimension | 0-20 | ~100 | ~250 | ~500 | 800~ |
|----------------------------|-----------|-------|-------|------|------|------|
| center distance (metal) | | ±0.1 | ±0.15 | ±0.2 | ±0.3 | ±0.5 |
| center distance (resin) | | ±0.15 | ±0.25 | ±0.4 | ±0.5 | ±0.7 |
| general dimensions (metal) | | ±0.15 | ±0.25 | ±0.4 | ±0.5 | ±0.7 |
| general dimensions (resin) | | ±0.15 | ±0.3 | ±0.5 | ±0.8 | ±1.0 |

| REVISION | DATE | REVISER |
|----------|------|---------|
| | | |

| ISSUE ZONE | DESCRIPTION | DATE | REVISER |
|------------|-------------|------|---------|
| | | | |

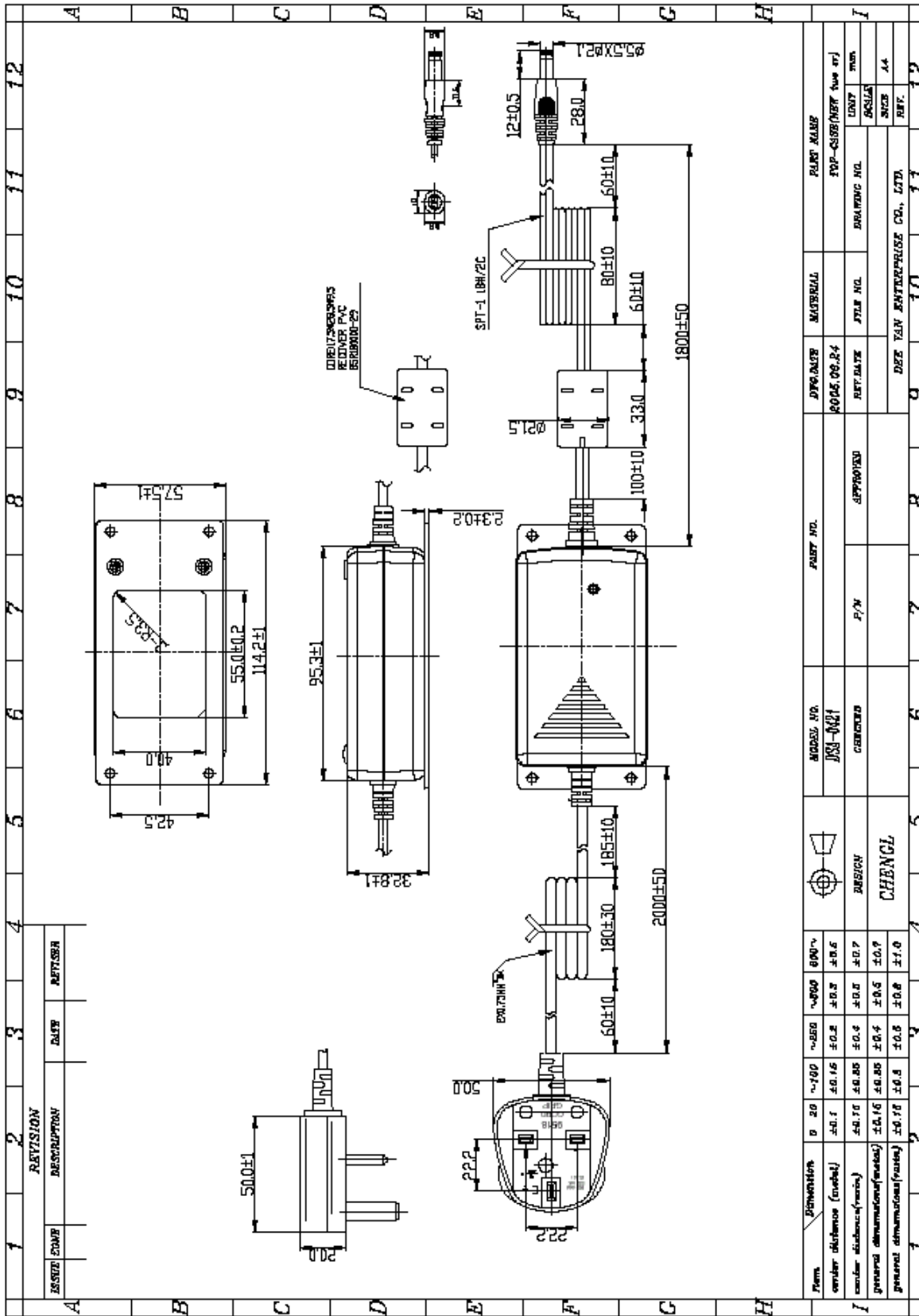
| MODEL NO. | CHECKED | P/N | APPROVED | DATE | MATERIAL | PART NO. | PART NAME |
|---|---------|-----|----------|--|----------|---------------------------------|-----------|
| DSA-6481S-12 24E <td> </td> <td> </td> <td> </td> <td>2005.06.24 <td> </td> <td>45H180813-15H <td>PC CORD </td></td></td> | | | | 2005.06.24 <td> </td> <td>45H180813-15H <td>PC CORD </td></td> | | 45H180813-15H <td>PC CORD </td> | PC CORD |

| FILE NO. | DRAWING NO. | UNIT | SCALE | SIZE | REV. |
|----------|-------------|------|-------|------|------|
| | | mm | | A4 | |

| DEE VAN ENTERPRISE CO., LTD. |
|------------------------------|
| |

4. PRODUCT OUTLINE DRAWING

-- 1 / 1



5. PACKING DRAWING

-- 1 / 1

