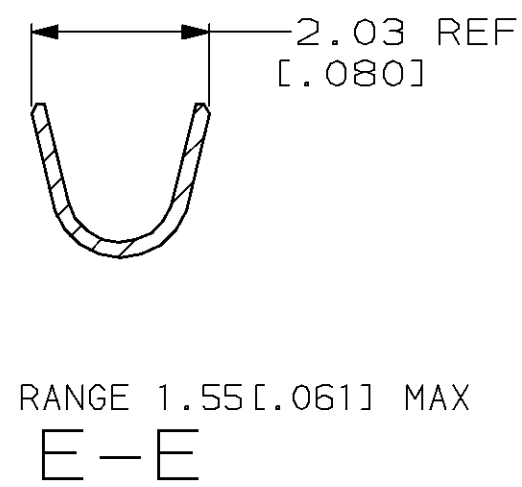
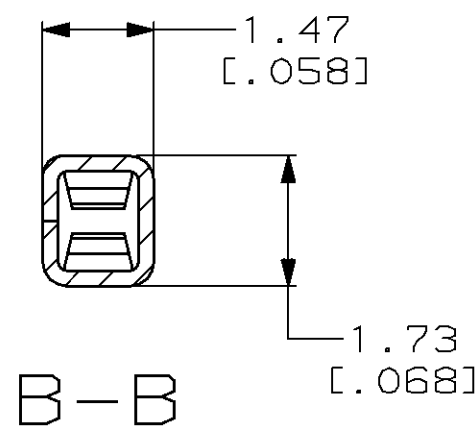
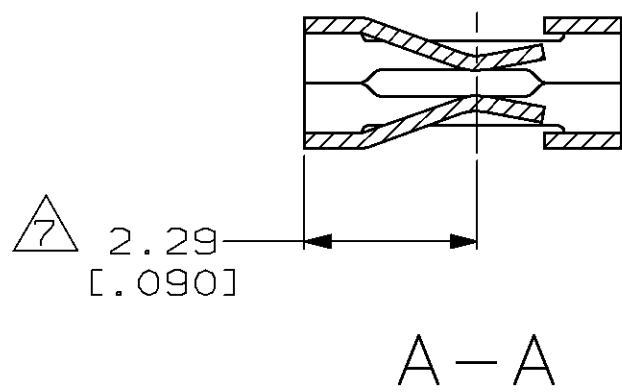
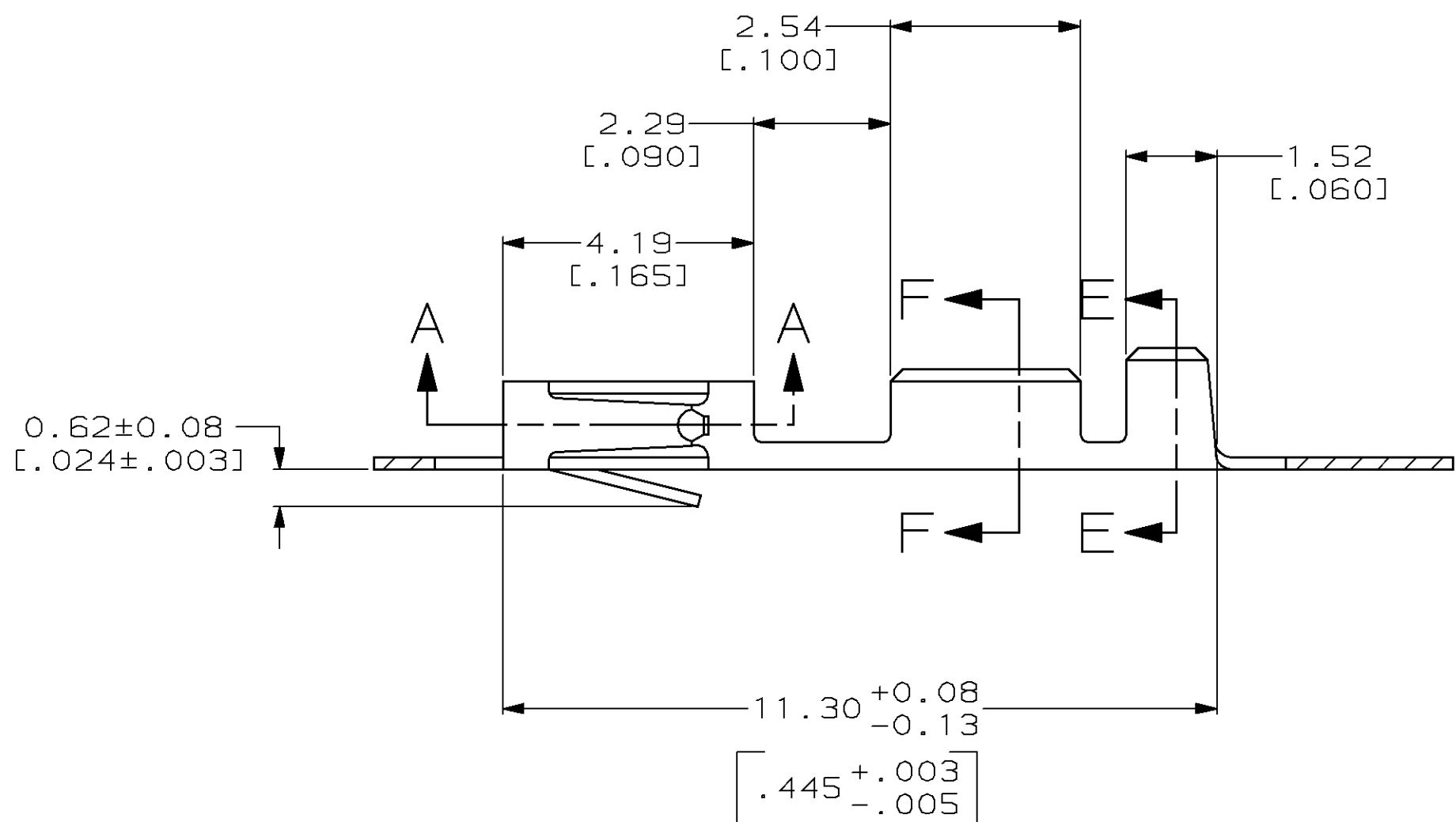
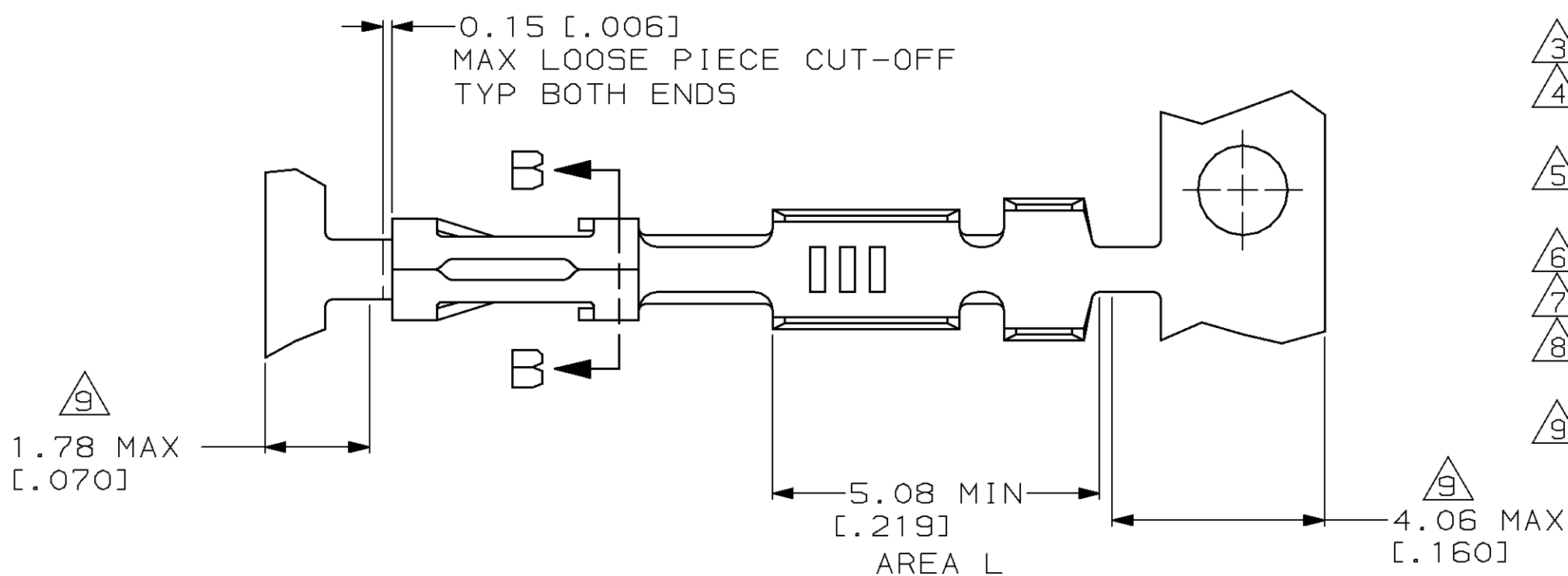


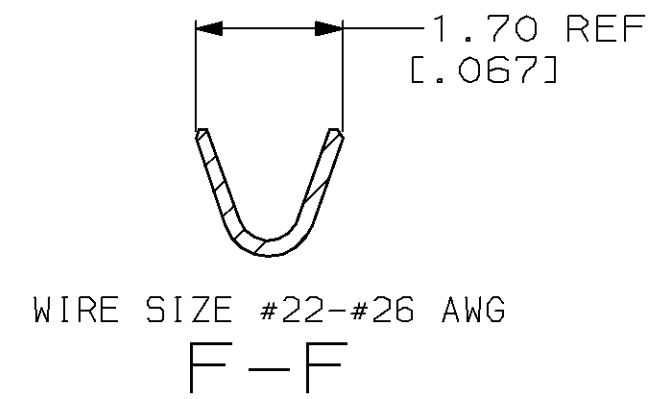
THIS DRAWING IS UNPUBLISHED. RELEASED FOR PUBLICATION  
 BY AMP INCORPORATED. ALL RIGHTS RESERVED.

LOC	DIST	REVISIONS					
AD	39	P	LTR	DESCRIPTION	DATE	DWN	APVD
		K		REV PER 0010-1407-95	20-FEB-96	EB	SS

- 1 REELED PER MINI-APPLICATOR.
- 2 0.00076[.000030] GOLD ON CONTACT AREA, GOLD FLASH ON THE REMAINDER, OVER 0.00127[.000050] NICKEL.
- 3 0.00127[.000050]-0.00381[.000150] PREPLATED BRIGHT TIN.
- 4 0.00038[.000015] GOLD IN CONTACT AREA, 0.00254[.000100]-0.00508[.000200] BRIGHT TIN-LEAD IN AREA L, ALL OVER 0.00127[.000050] NICKEL.
- 5 0.00076[.000030] GOLD IN CONTACT AREA, 0.00254[.000100]-0.00508[.000200] BRIGHT TIN-LEAD IN AREA L, ALL OVER 0.00127[.000050] NICKEL.
- 6 SHEARED EDGES PERMITTED TO BE UNPLATED.
- 7 POINT OF MEASUREMENT FOR PLATING THICKNESS (INSIDE BEAMS).
- 8 0.00038[.000015] GOLD ON THE CONTACT AREA, GOLD FLASH ON THE REMAINDER, ALL OVER 0.00127[.000050] NICKEL.
- 9 GOLD LATING NOT REQUIRED IN THIS AREA.



INSULATION RANGE 1.55[.061] MAX



WIRE SIZE #22-#26 AWG

OBsolete	8	87809-6
OBsolete	5	87809-5
OBsolete	4	87809-4
	3	87809-2
	2	87809-1
FINISH		PART NUMBER

DIMENSIONS:		TOLERANCES UNLESS OTHERWISE SPECIFIED:		DWN	20-FEB-96	AMP	AMP Incorporated	
mm	[INCH]	0 PLC	±-	CHK	20-FEB-96		Harrisburg, PA 17105-3608	
		1 PLC	±-	APVD <td>20-FEB-96 <td colspan="2">NAME</td> </td>	20-FEB-96 <td colspan="2">NAME</td>	NAME		
		2 PLC	±0.13[.005]	S. SHUEY		CONTACT, FEMALE, MOD V, CRIMP SNAP-IN		
		3 PLC	±-	S. SHUEY		SIZE	CAGE CODE	DRAWING NO
		4 PLC	±-	S. SHUEY		A2	00779	C-87809
		ANGLES	±-	S. SHUEY		SCALE	10:1	SHEET 1 OF 1
		FINISH	AS NOTED	S. SHUEY		REV	K	
MATERIAL	PHOS BRONZE 0.20[.008] THK			PRODUCT SPEC		CUSTOMER DRAWING		
				APPLICATION SPEC				
				108-25019				
				114-25003				