

TEDEA - HUNTLEIGH Models 1040 & 1041

Single Point Load Cells



- **Capacities: 5 - 100 kg (11.02 - 220.46 lbs)**
- **Aluminum construction**
- **6 Wire (sense circuit)**
- **Single point 400mm x 400mm
(15.75 inch x 15.75 inch) platform**
- **IP54 protection (IP67 optional)**
- **Approved to NTEP and OIML R60**

Models 1040 and 1041 are low profile single point load cells designed for direct mounting of low cost weighing platforms.

Their small physical size, combined with high accuracy and low cost, makes these load cells ideally suited for retail, bench and counting scales.

Available in anodized aluminum these high accuracy load cells are approved to NTEP and other stringent approval standards, including OIML R60.

An optional special humidity resistant protective coating assures long term stability over the entire compensated temperature range.

The two additional sense wires feed back the voltage reaching the load cell. Complete compensation of changes in lead resistance due to temperature change and/or cable extension, is achieved by feeding this voltage into the appropriate electronics.

info@tedea-huntleigh.com www.tedea-huntleigh.com

7800 Deering Avenue • P.O. Box 7964 • Canoga Park, CA 91309-7964 USA • Tel: 800.626.2616 • Fax: 818.340.1175
LOS ANGELES, USA DARMSTADT-EBERSTADT, GERMANY BEIJING, CHINA CARDIFF, UK NETANYA, ISRAEL KARMIEL, ISRAEL CHARTRES, FRANCE

TEDEA **th**
HUNTLEIGH
EXCELLENCE IN LOAD CELLS

1040/1041 SPECIFICATIONS

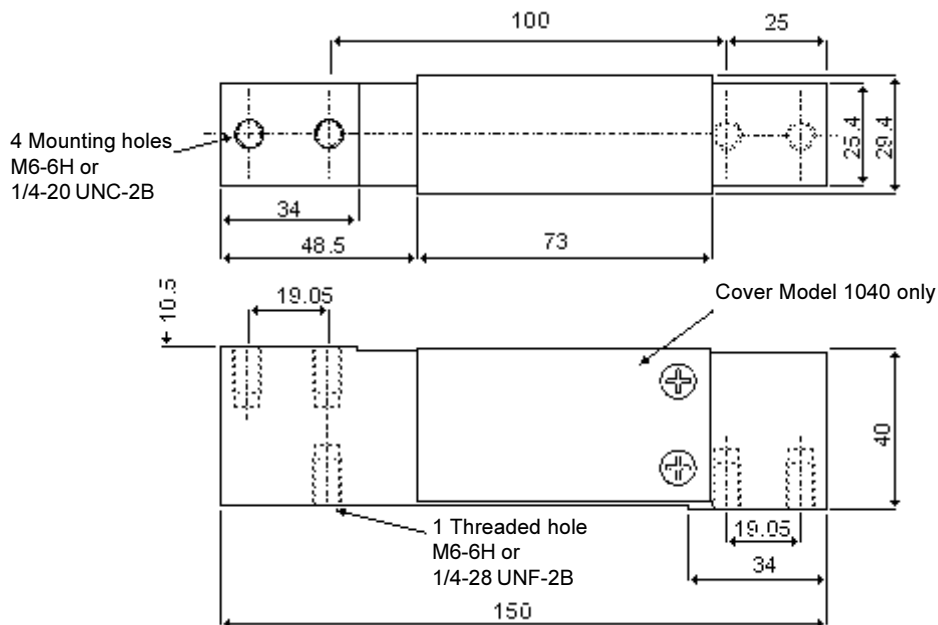
GRADE	E	F	G**	C3***	UNITS
Rated Capacities	5, 7, 10, 15, 20, 30, 50, 75, 100				kg
Rated Output	2.0 ± 10%				mV/V
Total Error*	0.030	0.020	0.0200	0.0200	±% of Applied Load
Zero Return after 30 mins	0.050	0.025	0.0170	0.0170	±% of Applied Load
Temperature Effect : On Output	0.0030	0.0014	0.0010	0.0010	±% of Applied Load / °C
: On Zero	0.0100	0.0060	0.0040	0.0023	±% of Rated Output / °C
Eccentric Loading	0.0074	0.0074	0.0049	0.0049	±% of Applied Load / cm
Zero Balance	100				±% of Rated Output
Temperature range : Operating	-30 to +70				°C
: Compensated	-10 to +40				°C
Safe Overload	150				% of Rated Capacity
Ultimate Overload	300				% of Rated Capacity
Excitation : Recommended	10				Volts AC or DC
: Maximum	15				Volts AC or DC
Input Impedance	415 ± 15				Ohms
Output Impedance	350 ± 3				Ohms
Insulation Impedance	1040 : >5000 1041 : >2000				Mega Ohms
Deflection at Rated Capacity	<0.4				nm
Weight :	1040 : 0.35 1041 : 0.30				kg
Construction	1040 : Anodised aluminum 1041 : Aluminum				
Environmental Protection	1040 : IP54 (IP67 Optional) 1041 : IP55				
Cable	1 Meter Standard (0.5m 1041), 6 Wire, PVC, Single Floating Screen				
Approvals	NTEP and OIML R60				

* Total Error - According to OIML R60

** 85% utilisation

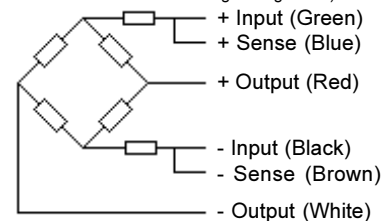
*** Consult factory for utilisation factors

Outline Dimensions All Capacities (in mm)



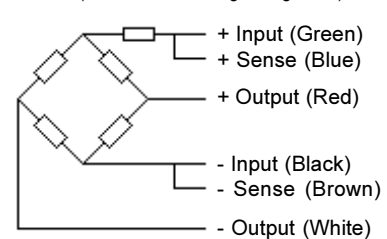
Wiring Schematic Diagram

(1040 balanced bridge configuration)



Wiring Schematic Diagram

(1041 unbalanced bridge configuration)



Also available from **Tedea-Huntleigh**

Also in this range, a stainless steel, bolt hole compatible version designated model 1140 is available for applications unsuitable for load cells of aluminum construction.

For further details please contact the factory or your local distributor.



Due to Tedea-Huntleigh's policy of continuous development, these specifications are subject to change without notice.

info@tedea-huntleigh.com www.tedea-huntleigh.com

DS1040-2, 3.97

7800 Deering Avenue • P.O. Box 7964 • Canoga Park, CA 91309-7964 USA • Tel: 800.626.2616 • Fax: 818.340.1175
 LOS ANGELES, USA DARMSTADT-EBERSTADT, GERMANY BEIJING, CHINA CARDIFF, UK NETANYA, ISRAEL KARMIEL, ISRAEL CHARTRES, FRANCE