

Waterproof Dual Color Illuminated Rocker

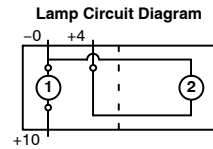
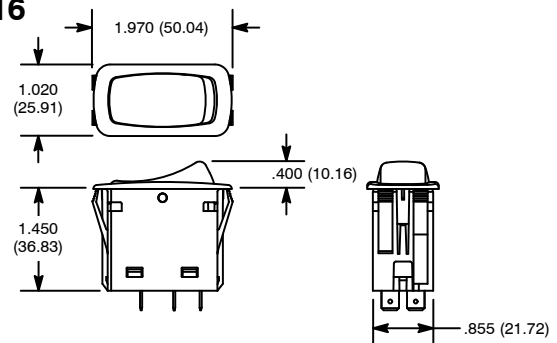


Features

- IP67 Certified
- Single and Double Pole
- Dual Color Types
- .250" Quick Connect Terminals



S116



Specifications

- Current Rating:** 20A 12VDC,
- Lamp Voltage:** 12V LED (DC)
- Insulation Resistance:** 50 Megohms
- Dielectric Strength:**
 - Between Pole to Pole: 1250 VRMS
 - Between Live Parts & Accessible Surfaces: 3750 VRMS
- Temperature Rating:** -40° to +185°F (-40° to +85°C)
- Electrical Life:** 100,000 cycles maintained
50,000 cycles momentary at rated voltage & current
- Mechanical Life:** 250,000 cycles min.
- Terminal Type:** .250" Tab Q.C.
- Mounting Hole:** 1.734 (44.04) x .867 (22.02)

NTE Type No.	Circuitry	Action			Actuator			Diag No.	
					Material	Color			Vltg
		ON	NONE	OFF		Neon	LED		
NEW 54-150	SPST	ON	NONE	OFF	Nylon	-	Amber/Green	DC	S116
NEW 54-151	SPST (ON)	(ON)	NONE	OFF	Nylon	-	Amber/Green	DC	S116
NEW 54-153	SPDT	ON	OFF	ON	Nylon	-	Amber/Green	DC	S116
NEW 54-154	SPDT	ON	OFF	(ON)	Nylon	-	Amber/Green	DC	S116
NEW 54-157	DPDT	ON	NONE	ON	Nylon	-	Amber/Green	DC	S116
NEW 54-158	DPDT (ON)	(ON)	OFF	(ON)	Nylon	-	Amber/Green	DC	S116

SPECIAL NOTE: () = Momentary Function