

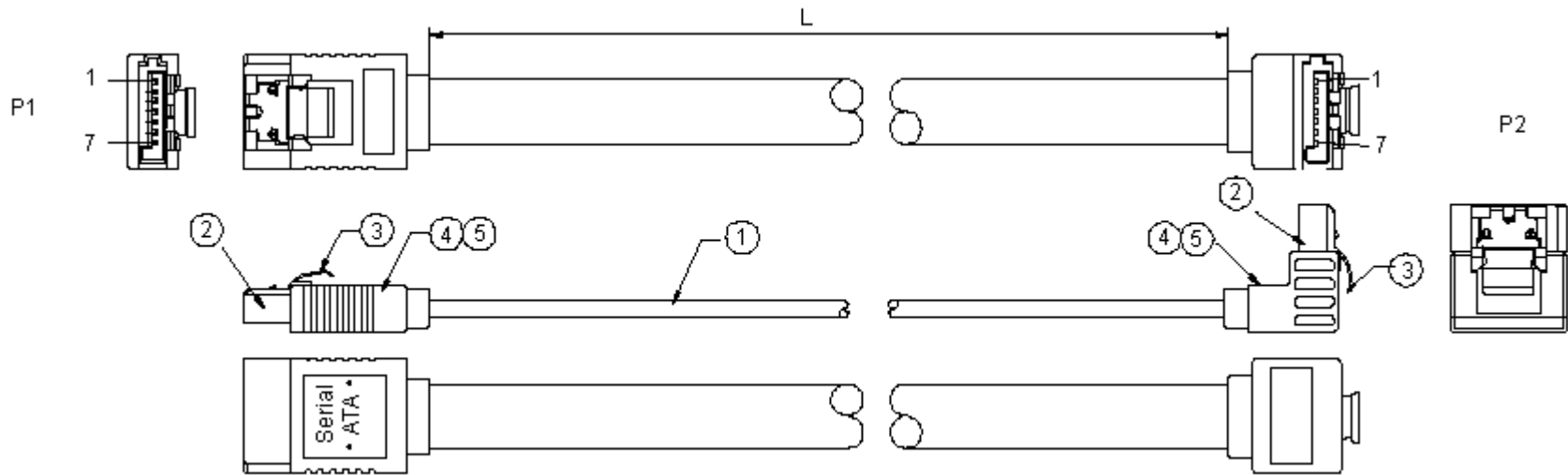


PART NO.

18-950720 Series

REVISIONS

ECN #	REV	DESCRIPTION	DRAWN	DATE	CHECKD	DATE	APPRVD	DATE
-	A	RELEASED	Veena	30/04/09	Suresh	30/04/09	Farnell	14/05/09



Dimensions : Millimetres

Pin Out

P1		P2
1	GND	1
2		2
3		3
4	GND	4
4	GND	4
5		5
6	GND	6
7		7

This data sheet and its contents (the "Information") belong to the Premier Farnell Group (the "Group") or are licensed to it. No licence is granted for the use of it other than for information purposes in connection with the products to which it relates. No licence of any intellectual property rights is granted. The Information is subject to change without notice and replaces all data sheets previously supplied. The Information supplied is believed to be accurate but the Group assumes no responsibility for its accuracy or completeness, any error in or omission from it or for any use made of it. Users of this data sheet should check for themselves the Information and the suitability of the products for their purpose and not make any assumptions based on information included or omitted. Liability for loss or damage resulting from any reliance on the Information or use of it (including liability resulting from negligence or where the Group was aware of the possibility of such loss or damage arising) is excluded. This will not operate to limit or restrict the Group's liability for death or personal injury resulting from its negligence. SPC MULTICOMP is the registered trademark of the Group. © Premier Farnell plc 2009.

TOLERANCES:

UNLESS OTHERWISE
SPECIFIED,
DIMENSIONS ARE
FOR REFERENCE
PURPOSES ONLY.

DRAWN BY:

Veena

DATE:

30/04/09

CHECKED BY:

Suresh

DATE:

30/04/09

APPROVED BY:

Farnell

DATE:

14/05/09

DRAWING TITLE:

SATA Cable Assembly

SIZE
A

DWG NO.

M10002151

ELECTRONIC FILE
1428283-1428284_DWGREV
A

SCALE: NTS

U.O.M.: mm

SHEET: 1 OF 2



PART NO.

18-950720 Series

REVISIONS

ECN #	REV	DESCRIPTION	DRAWN	DATE	CHECKD	DATE	APPRVD	DATE
-	A	RELEASED	Veena	30/04/09	Suresh	30/04/09	Farnell	14/05/09

Specifications:

Electrical Characteristics:

100% Open/short test.

Maximum contact resistance : 2.0Ω.

Hi-pot : 300V dc, 0.1 seconds.

Minimum insulation resistance : 10MΩ.

Specification Table

Item	Part Name	Description
1	Cable	Serial ATA Cable 26AWG Red
2	Connector	S-ATA-7P Black Pin Gold Plated 3μ Inches W/Latch (SS10-0703-02)
3	Latch	SATA 7P Short Latch
4	Inner Mould	35P PVC Colour: Black
5	Over Mould	PVC 45P Black

Part Number Table

L	Part Number
120 ±10	18-95072017
250 ±10	18-95072019

Dimensions : Millimetres

<http://www.farnell.com><http://www.newark.com><http://www.cpc.co.uk>

This data sheet and its contents (the "Information") belong to the Premier Farnell Group (the "Group") or are licensed to it. No licence is granted for the use of it other than for information purposes in connection with the products to which it relates. No licence of any intellectual property rights is granted. The Information is subject to change without notice and replaces all data sheets previously supplied. The Information supplied is believed to be accurate but the Group assumes no responsibility for its accuracy or completeness, any error in or omission from it or for any use made of it. Users of this data sheet should check for themselves the information and the suitability of the products for their purpose and not make any assumptions based on information included or omitted. Liability for loss or damage resulting from any reliance on the Information or use of it (including liability resulting from negligence or where the Group was aware of the possibility of such loss or damage arising) is excluded. This will not operate to limit or restrict the Group's liability for death or personal injury resulting from its negligence. SPC MULTICOMP is the registered trademark of the Group. © Premier Farnell plc 2009.

TOLERANCES:

UNLESS OTHERWISE
SPECIFIED,
DIMENSIONS ARE
FOR REFERENCE
PURPOSES ONLY.

DRAWN BY:

Veena

DATE:

30/04/09

CHECKED BY:

Suresh

DATE:

30/04/09

APPROVED BY:

Farnell

DATE:

14/05/09

DRAWING TITLE:

SATA Cable Assembly

SIZE
A

DWG NO.

M10002151

ELECTRONIC FILE
1428283-1428284_DWGREV
A

SCALE: NTS

U.O.M.: mm

SHEET: 2 OF 2