

HONEYWELL  
PART NUMBER  
311SX5-T  
PRODUCT CODE  
VDS0050

REV	DOCUMENT	CHANGED BY	CHECK
12	0038558	SS 08MAY08	BLR

B

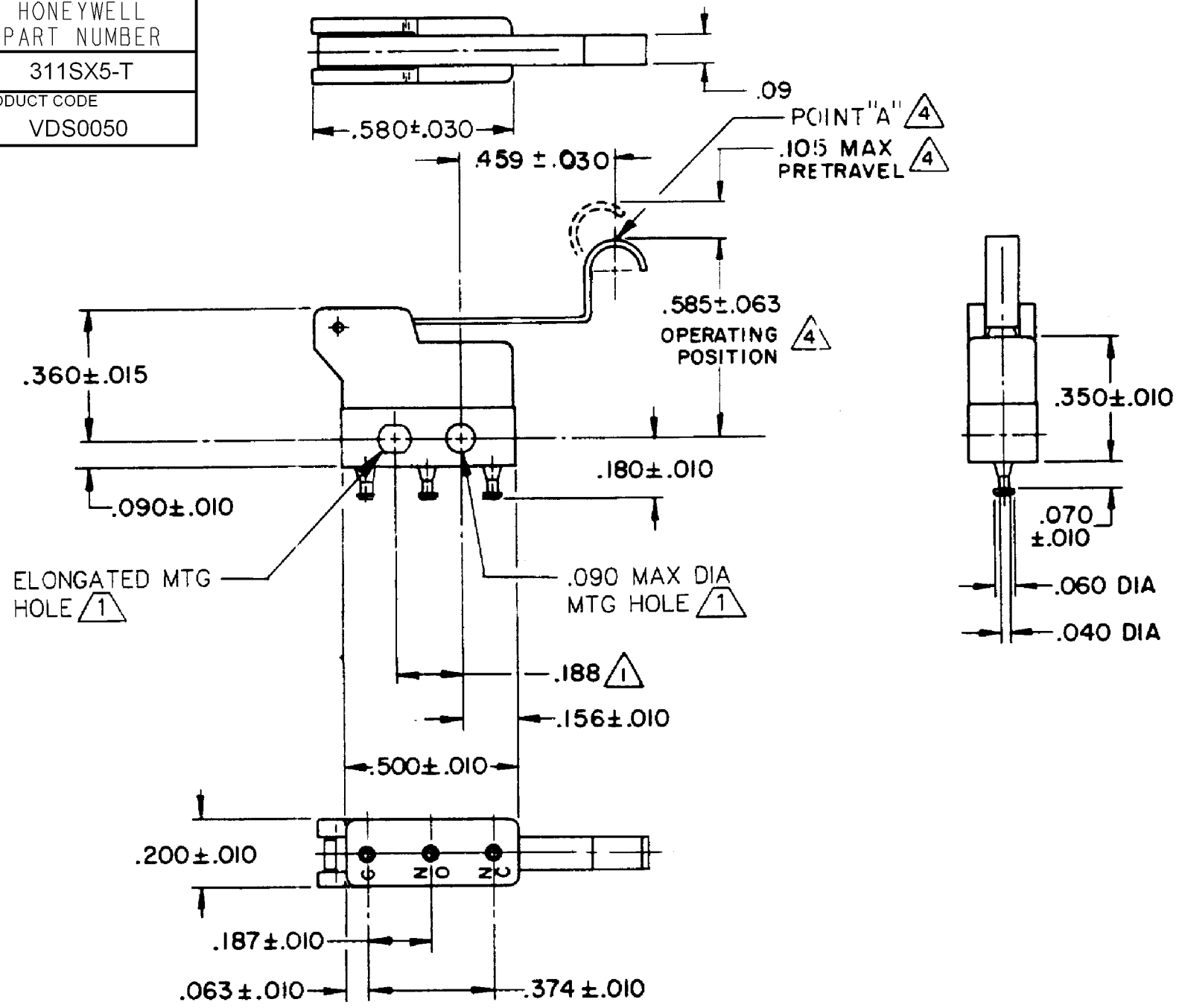
B

A

A

A

A



- NOTES
- ① MOUNTING HOLE WILL ACCEPT PINS OR SCREWS OF  $.087$  MAX DIA ON  $.188 \pm .002$  CENTERS
  - 2 - TERMINALS ARE PLATED FOR SOLDERING
  - 3 - SWITCH WILL WITHSTAND TEMPERATURE OF  $250^\circ$  F
  - ④ CHARACTERISTICS ARE TAKEN AT POINT "A"

RELEASE NO.	PR-861
REPLACES	X41463-SX

CHARACTERISTICS  $\Delta$

OPERATING FORCE - - -30 GRAM MAX

RELEASE FORCE - - - 5 GRAM MIN

DIFFERENTIAL TRAVEL - - .035 MAX

OVERTRAVEL - - - - .022 MIN

ELECTRICAL DATA

CONTACT ARRANGEMENT  
SPDT

	28 VOLTS DC RATING	115 VOLTS AC, 60 CPS
	SEA LEVEL	50,000 FT
INDUCTIVE	3 AMP	2 AMP
RESISTIVE	5 AMP	4 AMP
	5 AMP	5 AMP

APPROVALS

KEMA, CE	5A 250 V - T125	5E4	CE
UL, CSA	5A 250 VAC	UL	BRAND L4L

DESIGN UNITS: INCH

TOLERANCES UNLESS NOTED:

NO PLACE X  $\pm$

ONE PLACE .X  $\pm$

TWO PLACE .XX  $\pm$

THREE PLACE .XXX  $\pm$

FOUR PLACE .XXXX  $\pm$

ANGLES  $\pm$

THIRD ANGLE PROJECTION

DRAWN	SPK	26FEB08
CHECK	RJ	26FEB08
THIS DRAWING COVERS A PROPRIETARY ITEM AND IS THE PROPERTY OF HONEYWELL. THIS DRAWING IS NOT TO BE COPIED OR USED WITHOUT THE PERMISSION OF HONEYWELL.		
INTERPRET PER ANSI Y14.5M-1982 OTHER HONEYWELL ENGINEERING STANDARDS MAY APPLY		
RASTER		

**Honeywell**

TITLE  
**SWITCH - BASIC**

SIZE	TYPE	DRAWING NAME	REV
<b>B</b>	<b>I</b>	<b>311SX5-T</b>	<b>12</b>
SCALE	-	WEIGHT:	SHEET 1 OF 1