

40 Series Shell Case with End Panel

A very versatile shell enclosure with removable end plate. Recessed area for membrane keypad optional. Battery options include: 1 9V cell or No battery

Battery Options:
 No Battery
 or
 1 9V cell



Color Options:
 PC Bone
 Black
 Custom color matching

Standard Material Options:
 ABS UL 94 VO (fire retardant)
 ABS UL 94 HB standard

Dimensions:
 (L x W x H)
 3.80 x 2.40 x 1.00
 3.80 x 2.40 x 1.50 New deep top version available

	Flush Top - Black	Flush Top - Bone	Recessed Top - Black	Recessed Top - Bone
Dimensions	3.8 x 2.4 x 1.00"	3.8 x 2.4 x 1.00"	3.8 x 2.4 x 1.00"	3.8 x 2.4 x 1.00"
Description	Part No.	Part No.	Part No.	Part No.
Case with NO Battery Compartment	40-12-NO-F-BL	40-12-NO-F-BO	40-12-NO-R-BL	40-12-NO-R-BO
Case with 9V Battery Compartment	40-12-9V-F-BL	40-12-9V-F-BO	40-12-9V-R-BL	40-12-9V-R-BO

NEW Deep Top Version	Flush Top - Black	Flush Top - Bone	Recessed Top - Black	Recessed Top - Bone
Dimensions	3.8 x 2.4 x 1.50"	3.8 x 2.4 x 1.50"	3.8 x 2.4 x 1.50"	3.8 x 2.4 x 1.50"
Description	Part No.	Part No.	Part No.	Part No.
Case with NO Battery Compartment	40-32-NO-F-BL	40-32-NO-F-BO	40-32-NO-R-BL	40-32-NO-R-BO
Case with 9V Battery Compartment	40-32-9V-F-BL	40-32-9V-F-BO	40-32-9V-R-BL	40-32-9V-R-BO

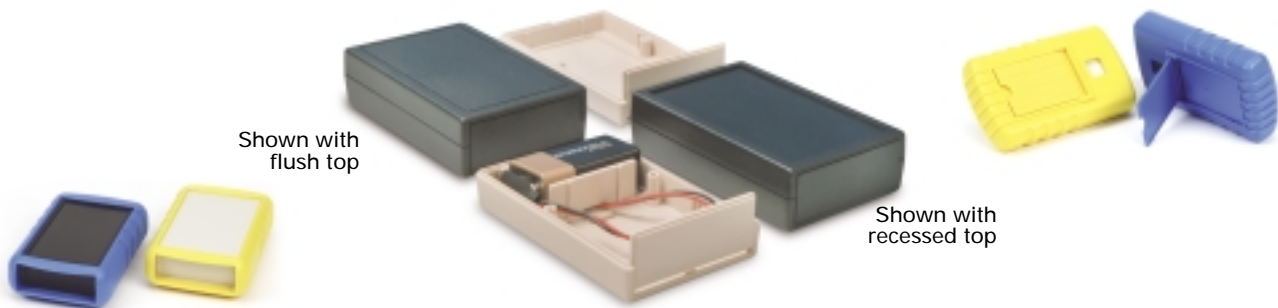
ACCESSORIES

Protective Boot w/Integrated tilt bar	Light Blue Part No.	Dark Blue Part No.	Bright Orange Part No.	Bright Yellow Part No.	Red Part No.	Black Part No.
	40-RBT-LBL	40-RBT-DBL	40-RBT-ORG	40-RBT-YEL	40-RBT-RED	40-RBT-BLK

Battery Clip Sets	9V snap on Part No.
	BAT-9VS

Belt Clips	Bone Part No.	Black Part No.
	CLP-BONE	CLP-BLK

End Plates	ABS, Black Part No.	Transparent Red Part No.	ABS Bone Part No.
Standard End Plate	40-EPBLK	40-EPIR	40-EPBO
Deep Top End Plate	41-EPBLK	41-EPIR	41-EPBO



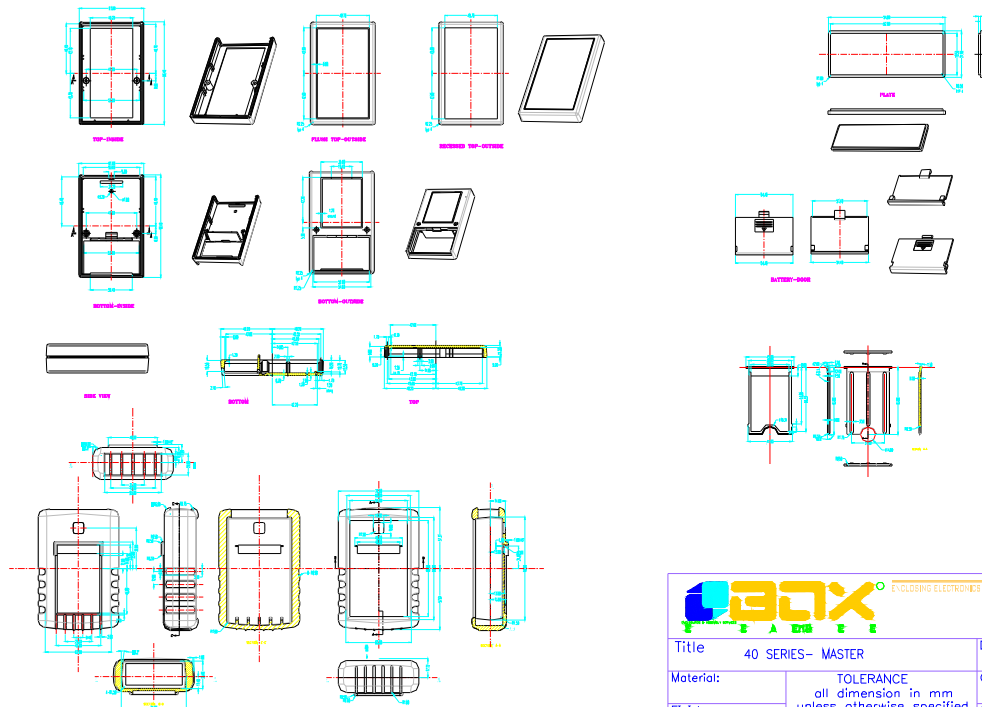


ENCLOSING ELECTRONICS ONE BOX AT A TIME



BOX ENCLOSURES, INC

28835 N. HERKY DRIVE, #114,
LAKE BLUFF, IL 60044

TEL: 847-932-4700 WWW.BOXENCLOSURES.COM FAX: 847-932-4701

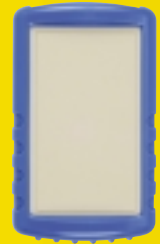


THIS DRAWING IS THE PROPERTY OF AND MAY CONTAIN PROPRIETARY INFORMATION OWNED BY BOX[®] Enclosures. If it is provided under a CONFIDENTIAL RELATIONSHIP FOR A SPECIFIC PURPOSE, THE RECIPIENT AGREES TO USE IT ONLY FOR SUCH PURPOSE AND RETURN IT TO BOX[®] ENCLOSURES UPON REQUEST.

 ENCLOSING ELECTRONICS ONE BOX AT A TIME		Revision:	
Title 40 SERIES- MASTER		Model:	
Material:		Dwg. No.:	Part No.:
Finish:		Color:	Drn. Date 12-13-01
Proj. 		Qty:	Chk. Date
TOLERANCE all dimension in mm unless otherwise specified. x ±0.20 .x ±0.10 .xx ±0.05 ANGLE ±0.5°		App. Date	
		A1 Sheet 1 of 1	

New for 2004

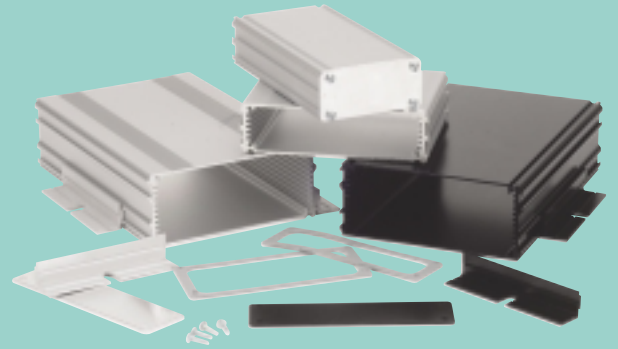
Featuring eight new product lines with protective rubber boots.



NEMA 4 / IP65 Enclosures



Extruded Aluminum



Protective Boots

NEW!



LCD Enclosures

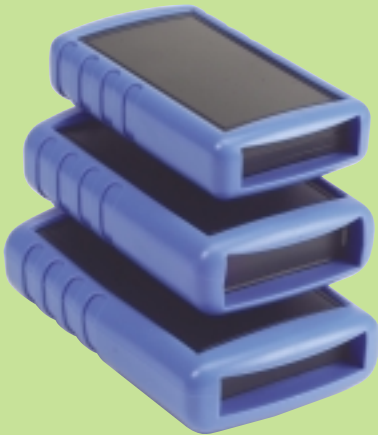


ENCLOSURES & ASSEMBLY SERVICES

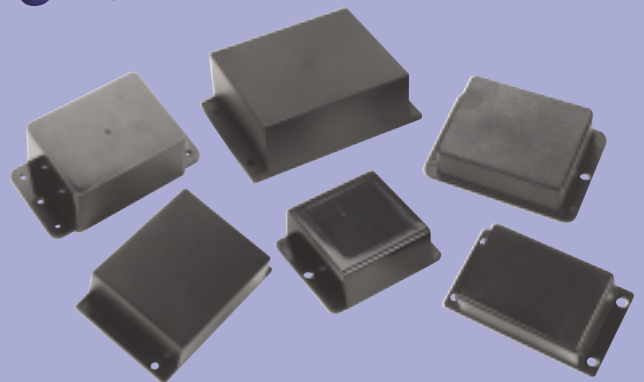
Enclosing electronics one box at a time.



Handheld Enclosures



Flange Cases



See back page for International Distribution Network