

# Spring Return Push Button Switches 0.5A 250Vac

## Self-Wiping-Slow Make & Break

To create a 7 digit catalogue number:

Refer to the 4 columns below, shaded in grey, starting with "Terminal Code".

Examples of products with their 10 digit numbers are illustrated.

For other versions state the first 7 digits,

then describe in words:

Button colour.

All switches have  $\mu$  contact gap.

0.5A 250Vac



T0916SO AAD



T0916LO AAA



T0916VA AAA

### TERMINAL CODE

T

### FUNCTION CODE

0916



Push for ON N/O  
Black coloured base

0917



Change over  
50 Volt only  
Brown coloured base

0918



Push for OFF N/C  
White coloured base

0919

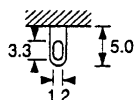


Two Circuit  
Black coloured base

0920



Push for ON N/O  
Black coloured base



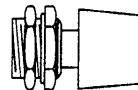
Solder tag

### BUTTON CODE

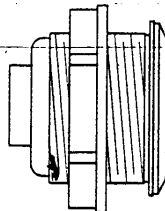
S Small button



L Large button



V Vandal resistant



### BODY CODE

Panel cut-outs

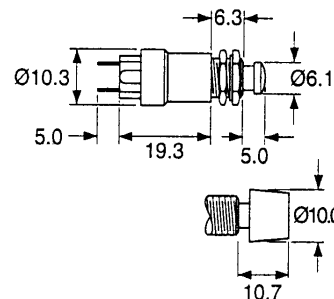
O



A



### DIMENSIONS



Fixing neck	7.04/6.95 dia.x 40 TPI Whit.
Panel hole	7.1 dia.
Button travel	2.5 max
Panel thickness	Both nuts 2.5mm Less backnut 4.0mm

### Materials

Body/button	Nylon 66 (V is Steel)
Button colour	Red, Green, Black, White
Contacts	Ag-plated/Cu alloy Gap $\mu$

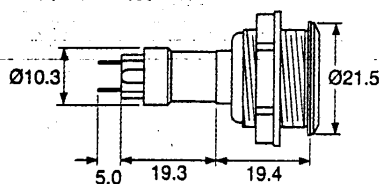
### Properties

Operating force	600g nom.
Terminals	Solder tags
Fixing	Domed hex nut

## Vandal Resistant Switch

Attractive low profile construction.

Rugged stainless steel button and body. Self wiping contacts-Slow make and break. Full internal and panel sealing to IP66.



### DIMENSIONS

Fixing neck	18.95 dia. x 40 TPI Whit.
Panel Hole	19.2 mm dia
Button travel	2.5 max
Panel:	Max thickness 8.0mm

### Materials

Button/push	Stainless steel
Fixing	Threaded body & hex nut
Contacts	Ag plated/Cu alloy ( $\mu$ gap)

### Properties

Operating pressure.	1000g approx.
Terminals	Solder tags
Sealing	To IP66