
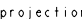


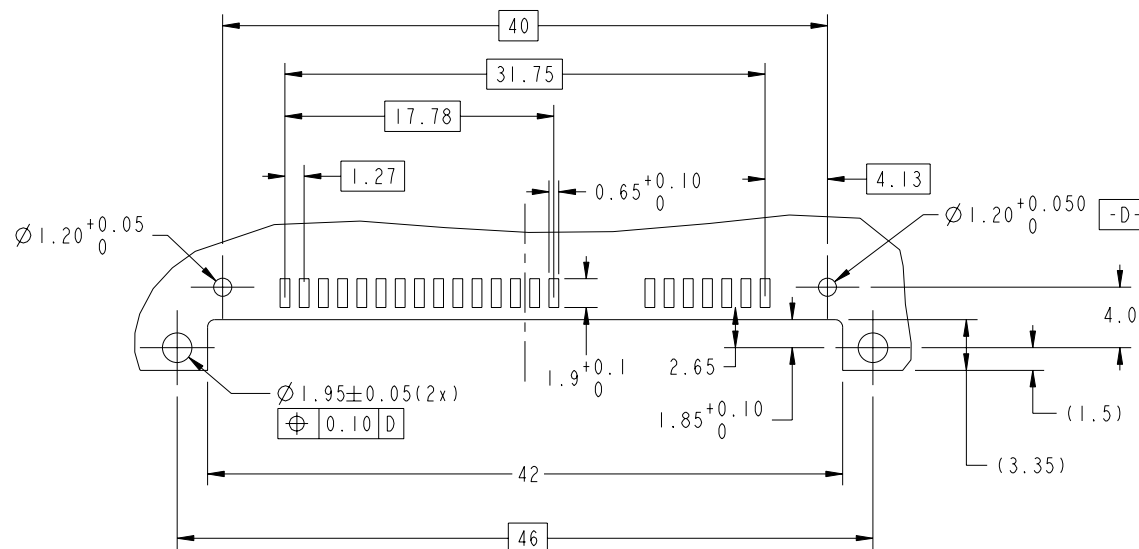




www.fci.com			surface - 		tolerance std ASME Y14.5		projection 				
			TOLERANCES UNLESS OTHERWISE SPECIFIED								
Dr	J PEH	2004-06-10	ANGULAR		LINEAR	0.X	±0.25	size	A4	Scale	2:1
Eng	BL LIM	2009-12-29				0.XX	±0.20				
Chr	BL LIM	2009-12-29	2°	±°		0.XXX	±0.10	ECN		S09-0416	
Appr	JOEY NG	2009-12-29	Product family					Spec ref			
		title				S-ATA RECEPTACLE				Rev	
						TOP MOUNT R/A SMT ASSY				H	
		catalog no				-		CUSTOMER		sheet 1 of 2	

PRODUCT NO.	RECOMMENDED P.C.B. THICKNESS	PLATING
10031569-001LF	1.6mm	NOTE 2
10031569-501LF		NOTE 8



NOTES: -

- MATERIAL:
 - HOUSING : HIGH TEMP. THERMOPLASTIC, UL 94V-0
COLOR : BLACK
 - TERMINAL : COPPER ALLOY
 - HOLD DOWN : COPPER ALLOY
- FINISH:
 - TERMINAL : 30u" Au PLATING (CONTACT POINT) OVER 50u" MIN NICKEL
 - SOLDER TAIL : 100u" MIN TIN OVER 50u" NICKEL
 - HOLD DOWN : 100u" MIN TIN OVER 50u" NICKEL
- THE STANDARD PACKAGING IS IN TRAY.
- THE HOUSING WILL WITHSTAND EXPOSURE TO 260°C PEAK TEMPERATURE FOR 10 SECONDS IN A CONVECTION, INFRA-RED OR VAPOR PHASE REFLOW OVEN.
- THIS PRODUCT MEETS EUROPEAN UNION DIRECTIVES AND OTHER COUNTRY REGULATIONS AS DESCRIBED IN GS-22-008
- PART NUMBERS ENDING IN "LF" ARE MEANT FOR LEAD-FREE IDENTIFICATION. P/N XXXXXXXX-XXLF IS EQUIVALENT TO PREVIOUS P/N XXXXXXXX-XXX
- ALL SOLDER TAIL TO BE WITHIN 0.12mm MAX. COPLANARITY.
- FINISH:
 - TERMINAL : 15u" Au PLATING (CONTACT POINT) OVER 50u" MIN NICKEL
 - SOLDER TAIL : 100u" MIN TIN OVER 50u" NICKEL
 - HOLD DOWN : 100u" MIN TIN OVER 50u" NICKEL

- A $\triangle H$ SYMBOL WILL BE NEXT TO ANY DIMENSION, VIEW, OR NOTE WHICH HAS BEEN MODIFIED WITH THE CURRENT DRAWING REVISION.

RECOMMENDED P.C.B LAYOUT
TOLERANCE UNLESS OTHERWISE: ± 0.1

FCI	title	S-ATA RECEPTACLE TOP MOUNT R/A SMT ASSY	dwg no	10031569	Rev.	H
	catalog no		CUSTOMER	sheet 2 of 2		