

STRUCTURE Silicon Monolithic Integrated Circuit

PRODUCT SERIES 16bit serial output digital Ambient Light Sensor IC

TYPE **BH1710FVC**

FUNCTION 1. Correspond to I²C bus interface (f/s Mode Support)
 2. Spectral responsibility is approximates human eyes response
 (Peak Wave Length : typ. 560nm)
 3. Illuminance to digital converter
 4. Correspond to wide range of light intensity (1 – 65535 lx range)
 5. Low Current by power down function
 6. Rejecting 50Hz/60Hz light noise enables a more stable sensing
 7. Correspond to 1.8V logic interface
 8. No need any external parts

● Absolute Maximum Ratings (Ta = 25°C)

Parameter	Symbol	Limits	Units
Supply Voltage	Vmax	4.5	V
Operating Temperature	Topr	-30~85	°C
Storage Temperature	Tstg	-40~100	°C
SDA Sink Current	Imax	7	mA
Power Dissipation	Pd	260 _※	mW

※ 70mm × 70mm × 1.6mm glass epoxy board. Derating in done at 3.47mW/°C for operating above Ta=25°C.

● Operating Conditions

Parameter	Symbol	Min.	Typ.	Max.	Units
VCC Voltage	Vcc	2.4	3.0	3.6	V
I ² C Reference Voltage	VDVI	1.65	-	VCC	V

NOTE: This product is not designed for protection against radioactive rays.
 This product does not include laser transmitter. This product does not include optical load.
 This product includes Photo detector, (Photo Diode) inside of it.

·Status of this document

The Japanese version of this document is the formal specification. A customer may use this translation version only for a reference to help reading the formal version. If there are any differences in translation version of this document, formal version takes priority.

●Electrical Characteristics (VCC = 3.0V, DVI = 3.0V, Ta = 25°C)

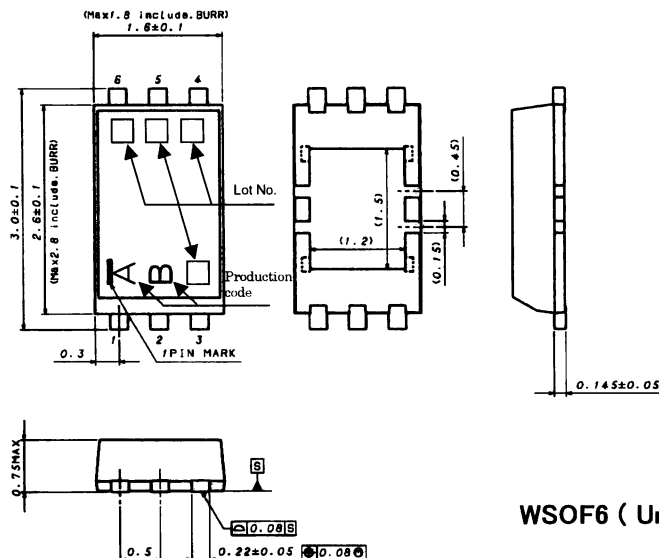
Parameter	Symbol	Min.	Typ.	Max.	Units	Conditions
Supply Current	I _{cc1}	—	120	190	uA	Ev=100 lx ※1
Powerdown Current	I _{cc2}	—	0.01	0.2	uA	No Input Light
Measurement Accuracy	S/A	0.75	1.2	1.65	Times	Sensor out / Actual lx ※1, ※2
Dark (0 lx) Sensor out	S0	0	0	2	count	H-Resolution Mode ※3
H-Res Mode Measure Time	t _{HR}	—	120	180	ms	
M-Res Mode Measure Time	t _{MR}	—	16	24	ms	
L-Res Mode Measure Time	t _{LR}	—	2.9	4.5	ms	
ADDR input 'H' Voltage	VAH	0.7*VCC	—	—	V	
ADDR input 'L' Voltage	VAL	—	—	0.3*VCC	V	
DVI input 'L' Voltage	VDVL	—	—	0.4	V	
SCL SDA input 'H' Voltage 1	VIH1	0.7*DVI	—	—	V	DVI ≥ 1.8V
SCL SDA input 'H' Voltage 2	VIH2	1.26	—	—	V	1.65V ≤ DVI < 1.8V
SCL SDA input 'L' Voltage 1	VIL1	—	—	0.3*DVI	V	DVI ≥ 1.8V
SCL SDA input 'L' Voltage 2	VIL2	—	—	DVI-1.26	V	1.65V ≤ DVI < 1.8V
SCL SDA ADDR input 'H' Current	I _{IH}	—	—	10	uA	
SCL SDA ADDR input 'L' Current	I _{IL}	—	—	10	uA	
I ² C SDA Output 'L' Voltage	VOL	0	—	0.4	V	IOL=3 mA
I ² C SCL Clock Frequency	f _{SCL}	—	—	400	kHz	
I ² C Hold Time (Repeated) START Condition	t _{HDSTA}	0.6	—	—	us	
I ² C 'L' Period of the SCL Clock	t _{LOW}	1.3	—	—	us	
I ² C 'H' Period of the SCL Clock	t _{HIGH}	0.6	—	—	us	
I ² C Set up time for a Repeated START Condition	t _{SUSTA}	0.6	—	—	us	
I ² C Data Hold Time	t _{HDDAT}	0	—	0.9	us	
I ² C Data Setup Time	t _{SUDAT}	100	—	—	ns	
I ² C Set up Time for STOP Condition	t _{SUSTO}	0.6	—	—	us	
I ² C BUS Free Time between a STOP and START Condition	t _{BUF}	1.3	—	—	us	

※1 White LED is used as optical source.

※2 Measurement Accuracy typical value is possible to change '1' by "Measurement result adjustment function".

※3 Use H-Resolution Mode if dark data (less than 10 lx) is need.

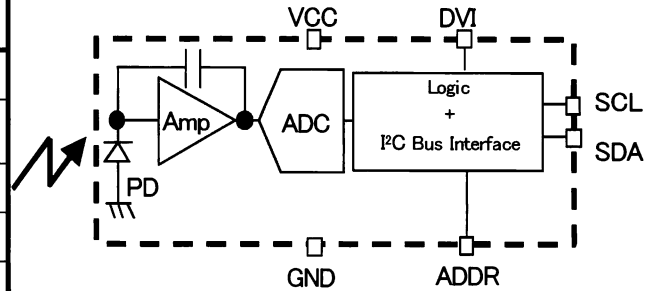
●Package Outlines



WSOF6 (Unit : mm)

● Block Diagram and Pin Description

Pin No.	Pin Name	Function
1	VCC	Power Supply Voltage Pin
2	ADDR	Pin to Appoint Slave Address of I ² C BUS Interface
3	GND	GND Pin
4	SDA	I ² C BUS SDA Pin
5	DVI	I ² C BUS Reference Voltage and initial reset Pin ('L' reset) ※
6	SCL	I ² C BUS SCL Pin



※ Initial reset is necessary on power supply sequence.

● Slave Address Setting by ADDR Terminal

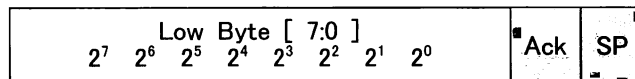
ADDR	Slave Address
'H' (ADDR ≥ VCC * 0.7)	1011100
'L' (ADDR ≤ VCC * 0.3)	0100011

● I²C BUS Access

Write Format (Instruction of measurement beginning etc.)



Read Format (Reading of Illuminance Data)



from Master to Slave



from Slave to Master

Ex) When High Byte = 1000_0011

Low Byte = 1001_0000

calculate illuminance by following expression.

$$(2^{15} + 2^9 + 2^8 + 2^7 + 2^4) / 1.2 \approx 28067 [lx]$$

※ I²C BUS is trademark of Phillips Semiconductors. Please refer formality specification

Instruction Set Architecture (Opcode of Write Format)

Instruction	Opcode	Instruction	Opcode
POWER DOWN	0000_0000	Continuously Measurement L-Resolution Mode	0001_0110
POWER ON	0000_0001	One Time Measurement H-Resolution Mode	0010_0000
Reset	0000_0111	One Time Measurement M-Resolution Mode	0010_0011
Continuously Measurement H-Resolution Mode	0001_0000	One Time Measurement L-Resolution Mode	0010_0110
Continuously Measurement M-Resolution Mode	0001_0011		

● Cautions on use

1) Absolute Maximum Ratings

An excess in the absolute maximum ratings, such as supply voltage (V_{max}), temperature range of operating conditions (T_{opr}), etc., can break down devices, thus making impossible to identify breaking mode such as a short circuit or an open circuit. If any special mode exceeding the absolute maximum ratings is assumed, consideration should be given to take physical safety measures including the use of fuses, etc.

2) GND voltage

Make setting of the potential of the GND terminal so that it will be maintained at the minimum in any operating state. Furthermore, check to be sure no terminals are at a potential lower than the GND voltage including an actual electric transient.

3) Short circuit between terminals and erroneous mounting

In order to mount ICs on a set PCB, pay thorough attention to the direction and offset of the ICs. Erroneous mounting can break down the ICs. Furthermore, if a short circuit occurs due to foreign matters entering between terminals or between the terminal and the power supply or the GND terminal, the ICs can break down.

4) Operation in strong electromagnetic field

Be noted that using ICs in the strong electromagnetic field can malfunction them.

5) Inspection with set PCB

On the inspection with the set PCB, if a capacitor is connected to a low-impedance IC terminal, the IC can suffer stress. Therefore, be sure to discharge from the set PCB by each process. Furthermore, in order to mount or dismount the set PCB to/from the jig for the inspection process, be sure to turn OFF the power supply and then mount the set PCB to the jig. After the completion of the inspection, be sure to turn OFF the power supply and then dismount it from the jig. In addition, for protection against static electricity, establish a ground for the assembly process and pay thorough attention to the transportation and the storage of the set PCB.

6) Input terminals

In terms of the construction of IC, parasitic elements are inevitably formed in relation to potential. The operation of the parasitic element can cause interference with circuit operation, thus resulting in a malfunction and then breakdown of the input terminal. Therefore, pay thorough attention not to handle the input terminals; such as to apply to the input terminals a voltage lower than the GND respectively, so that any parasitic element will operate. Furthermore, do not apply a voltage to the input terminals when no power supply voltage is applied to the IC. In addition, even if the power supply voltage is applied, apply to the input terminals a voltage lower than the power supply voltage or within the guaranteed value of electrical characteristics.

7) Thermal design

Perform thermal design in which there are adequate margins by taking into account the power dissipation (P_d) in actual states of use.

8) Treatment of package

Dusts or scratch on the photo detector may affect the optical characteristics. Please handle it with care.

9) When power is first supplied to the CMOS IC, it is possible that the internal logic may be unstable and rush current may flow instantaneously. Therefore, give special consideration to power coupling capacitance, power wiring, width of GND wiring, and routing of connections.

Notes

- No technical content pages of this document may be reproduced in any form or transmitted by any means without prior permission of ROHM CO.,LTD.
- The contents described herein are subject to change without notice. The specifications for the product described in this document are for reference only. Upon actual use, therefore, please request that specifications to be separately delivered.
- Application circuit diagrams and circuit constants contained herein are shown as examples of standard use and operation. Please pay careful attention to the peripheral conditions when designing circuits and deciding upon circuit constants in the set.
- Any data, including, but not limited to application circuit diagrams information, described herein are intended only as illustrations of such devices and not as the specifications for such devices. ROHM CO.,LTD. disclaims any warranty that any use of such devices shall be free from infringement of any third party's intellectual property rights or other proprietary rights, and further, assumes no liability of whatsoever nature in the event of any such infringement, or arising from or connected with or related to the use of such devices.
- Upon the sale of any such devices, other than for buyer's right to use such devices itself, resell or otherwise dispose of the same, no express or implied right or license to practice or commercially exploit any intellectual property rights or other proprietary rights owned or controlled by
- ROHM CO., LTD. is granted to any such buyer.
- Products listed in this document are no antiradiation design.

The products listed in this document are designed to be used with ordinary electronic equipment or devices (such as audio visual equipment, office-automation equipment, communications devices, electrical appliances and electronic toys).

Should you intend to use these products with equipment or devices which require an extremely high level of reliability and the malfunction of which would directly endanger human life (such as medical instruments, transportation equipment, aerospace machinery, nuclear-reactor controllers, fuel controllers and other safety devices), please be sure to consult with our sales representative in advance.

It is our top priority to supply products with the utmost quality and reliability. However, there is always a chance of failure due to unexpected factors. Therefore, please take into account the derating characteristics and allow for sufficient safety features, such as extra margin, anti-flammability, and fail-safe measures when designing in order to prevent possible accidents that may result in bodily harm or fire caused by component failure. ROHM cannot be held responsible for any damages arising from the use of the products under conditions out of the range of the specifications or due to non-compliance with the NOTES specified in this catalog.

Thank you for your accessing to ROHM product informations.

More detail product informations and catalogs are available, please contact your nearest sales office.

ROHM Customer Support System

THE AMERICAS / EUROPE / ASIA / JAPAN

www.rohm.com

Contact us : webmaster@rohm.co.jp