

## FEATURES

Asia standard dimension  
 Design for small mounting space.  
 10A current capacity  
 Long mechanical life 1x10<sup>7</sup> operations  
 Wide range of actuators available  
 UL, cUL, CCC, CE approved  
 IP65 (standard type) and IP67 (precision type) Rated  
 Precision type SLP has built-in IP67 rated cable gland  
 (also available in M12 quick connector type)



### Applications:

General Machinery  
 Conveyor, Transportation Equipments  
 Specialty Machinery  
 Packaging Machinery

### Selection guide

Switch Type

Actuator




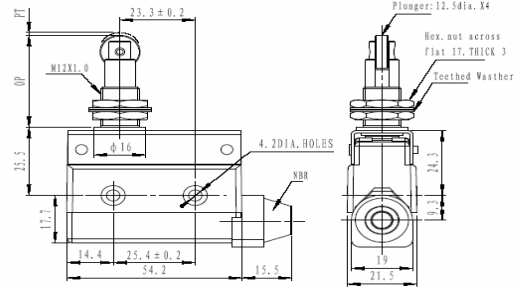

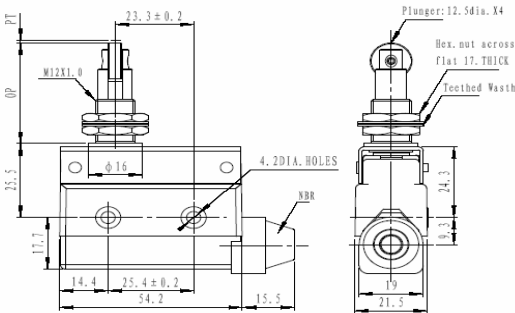

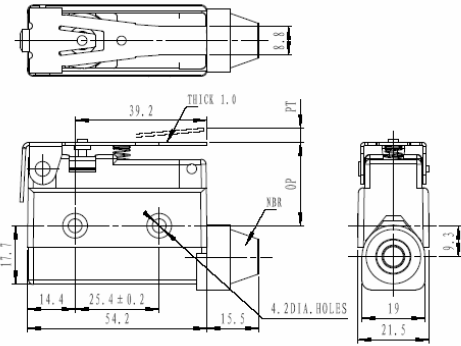

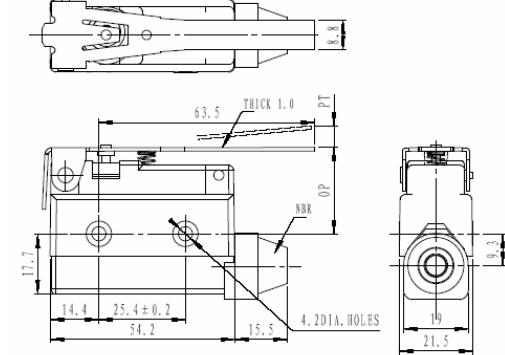
Standard type

P Precision Type

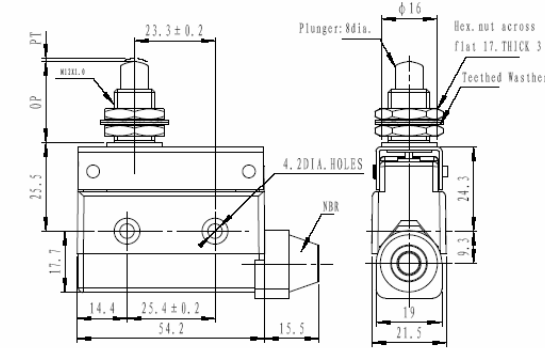
## Characteristics

	SL (standard type)	SLP (precision type)
Contact Type, Contact Material	SPDT, Silver Alloy	SPDT, Silver Alloy (Gold plated contact available)
Actuator	See Selection guide	
Operating Speed	0.05mm ~ 2m/s	0.05mm ~ 0.5m/s
Operating Frequency	Mechanically: 120 ops/min, Electrically: 30 ops/min	
Rated Current/Voltage	10A/250VAC (EN60947-5-1)	Silver: 5A/250VAC or 5A/30VDC Gold plated: 0.1A/250VAC or 0.1A/30VDC
Contact Resistance	<25mΩ (initial)	
Insulation Resistance	>100MΩ@500V DC	
Dielectric Strength	1000VAC for 1 min between current carrying parts 2500VAC for 1 min between non-current carrying part	
Service Life	Mechanically: 5,000,000 ops Electrically: 500,000 ops at maximum rating	Mechanically: 5,000,000 ops Electrically: 500,000 ops at maximum rating
Shock	Free position:<10G, Maximum position: <30G	
Vibration	10 to 55 Hz, 1.5 mm double amplitude (excluding spring coil type)	
Operating Temperature	-20 to 60°C	-30 to 80°C
Certification	CE, CCC, UL (E313809)	CE, CCC
Degree of Protection	IP64	IP67

## Dimensions and Operating Characteristics

<p><b>&lt;SL-A&gt;</b></p> 	 <p>Plunger: 12.5dia. X4 Hex. out across flat 17. THICK 3 Toothed Washer</p> <p>动作特性</p> <ul style="list-style-type: none"> <li>● OFmax 5.88N</li> <li>● RFmin 0.98N</li> <li>● PTmax 2.0mm</li> <li>● OTmin 6.0mm</li> <li>● MDmax 0.8mm</li> <li>● FPmax 35.3mm</li> <li>● OP 33.3 ± 1.2mm</li> </ul>
<p><b>&lt;SL-A1&gt;</b></p> 	 <p>Plunger: 12.5dia. X4 Hex. out across flat 17. THICK 3 Toothed Washer</p> <p>动作特性</p> <ul style="list-style-type: none"> <li>● OFmax 5.88N</li> <li>● RFmin 0.98N</li> <li>● PTmax 2.0mm</li> <li>● OTmin 6.0mm</li> <li>● MDmax 0.8mm</li> <li>● FPmax 35.3mm</li> <li>● OP 33.3 ± 1.2mm</li> </ul>
<p><b>&lt;SL-B&gt;</b></p> 	 <p>Plunger: 12.5dia. X4 Hex. out across flat 17. THICK 3 Toothed Washer</p> <p>动作特性</p> <ul style="list-style-type: none"> <li>● OFmax 2.16N</li> <li>● RFmin 0.59N</li> <li>● PTmax 8.5mm</li> <li>● OTmin 2.5mm</li> <li>● MDmax 2.0mm</li> <li>● FPmax 33.5mm</li> <li>● OP 25 ± 1.3mm</li> </ul>
<p><b>&lt;SL-B1&gt;</b></p> 	 <p>Plunger: 12.5dia. X4 Hex. out across flat 17. THICK 3 Toothed Washer</p> <p>动作特性</p> <ul style="list-style-type: none"> <li>● OFmax 1.47N</li> <li>● RFmin 0.39N</li> <li>● PTmax 13.5mm</li> <li>● OTmin 4.0mm</li> <li>● MDmax 3.2mm</li> <li>● FPmax 38.5mm</li> <li>● OP 25 ± 2.0mm</li> </ul>

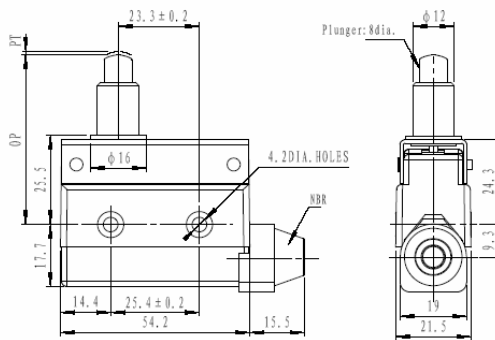
## <SL-H>



### 动作特性

- OFmax 5.88N
- RFmin 0.98N
- PTmax 2.0mm
- OTmin 6.0mm
- MDmax 0.8mm
- FPmax 23.8mm
- OP 21.8 ± 0.8mm

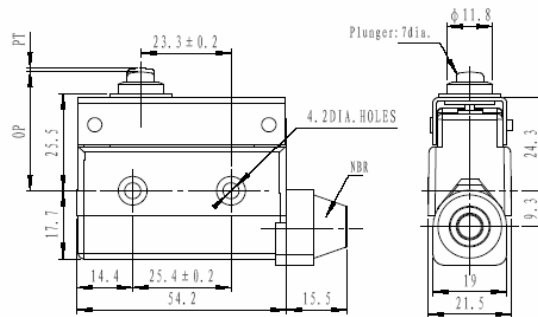
## <SL-H1>



### 动作特性

- OFmax 5.88N
- RFmin 0.98N
- PTmax 2.0mm
- OTmin 5.0mm
- MDmax 0.8mm
- FPmax 46mm
- OP 44 ± 1.2mm

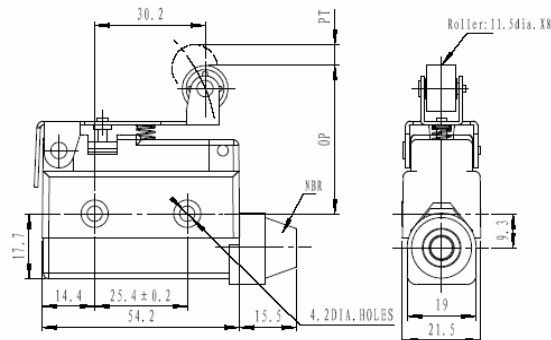
## <SL-H2>



### 动作特性

- OFmax 5.88N
- RFmin 0.98N
- PTmax 2.0mm
- OTmin 0.8mm
- MDmax 0.8mm
- OP 30 ± 0.8mm

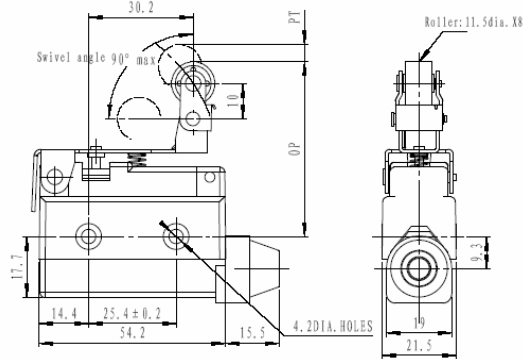
## <SL-E>



### 动作特性

- OFmax 2.35N
- RFmin 0.87N
- PTmax 6.5mm
- OTmin 2.0mm
- MDmax 1.5mm
- FPmax 46.5mm
- OP 40 ± 1.6mm

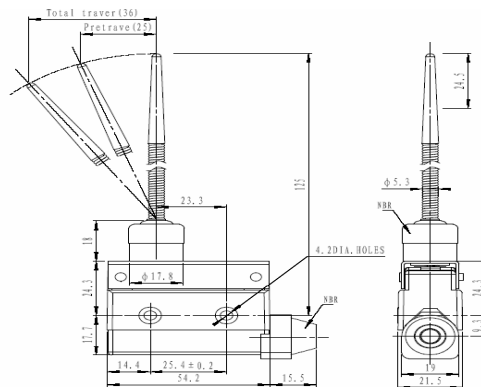
<SL-E1>



动作特性

- OFmax 2.75N
- RFmin 0.98N
- PTmax 6.5mm
- OTmin 2.0mm
- MDmax 1.5mm
- FPmax 56.5mm
- OP 50 ± 1.6mm

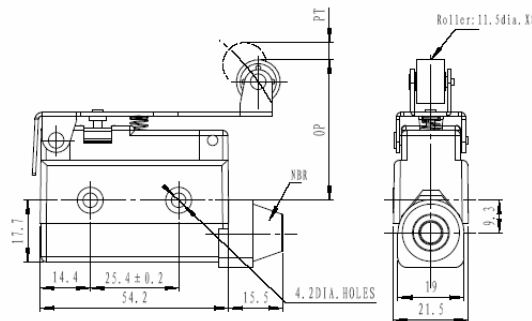
<SL-F>



动作特性

- OFmax 1.18N
- PTmax 25mm
- OTmin 11mm
- TTmax 36mm

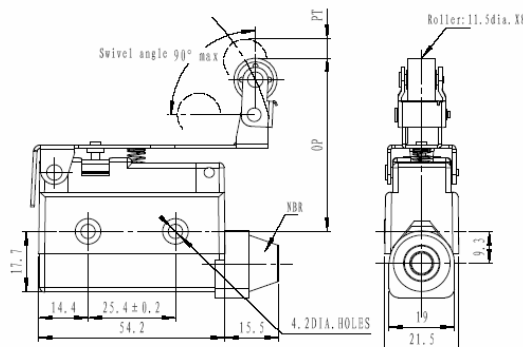
<SL-P>



动作特性

- OFmax 1.77N
- RFmin 0.49N
- PTmax 11.0mm
- OTmin 3.0mm
- MDmax 2.4mm
- FPmax 51.0mm
- OP 40 ± 1.9mm

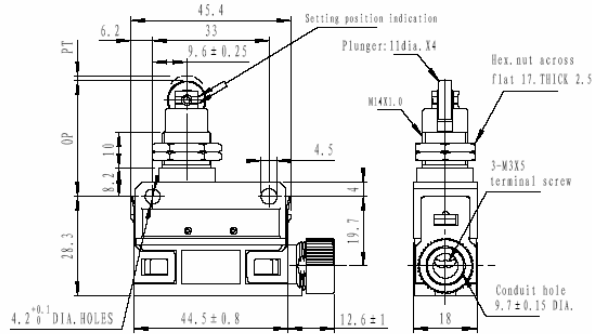
<SL-P1>



动作特性

- OFmax 2.16N
- RFmin 0.59N
- PTmax 11.0mm
- OTmin 3.0mm
- MDmax 2.4mm
- FPmax 61.0mm
- OP 50 ± 2.0mm

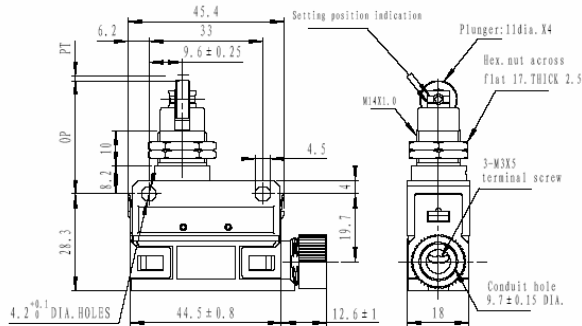
## <SLP-A>



### 动作特性

- OFmax 11.8N
- RFmin 4.9N
- PTmax 1.5mm
- OTmin 3mm
- MDmax 0.1mm
- OP 31.4 ± 0.8mm

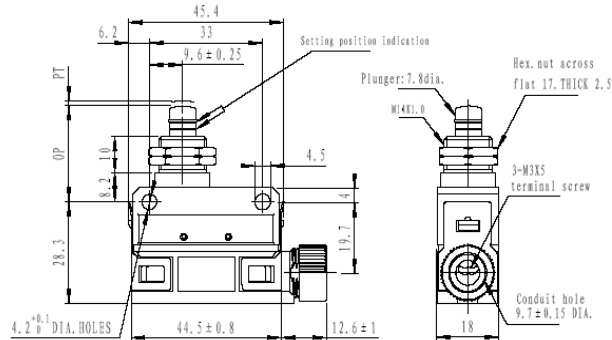
## <SLP-A1>



### 动作特性

- OFmax 11.8N
- RFmin 4.9N
- PTmax 1.5mm
- OTmin 3mm
- MDmax 0.1mm
- OP 31.4 ± 0.8mm

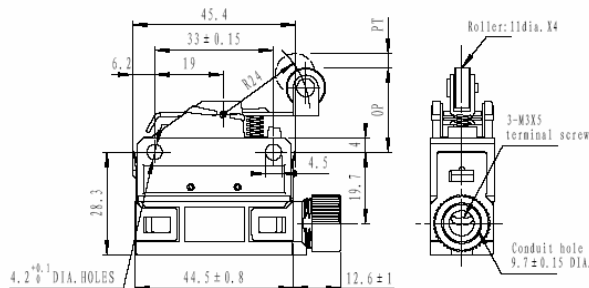
## <SLP-H>



### 动作特性

- OFmax 11.8N
- RFmin 4.9N
- PTmax 1.5mm
- OTmin 3mm
- MDmax 0.1mm
- OP 25.4 ± 0.8mm

## <SLP-E>



### 动作特性

- OFmax 4.0N
- RFmin 0.78N
- PTmax 2mm
- OTmin 4mm
- MDmax 0.3mm
- OP 23.1 ± 0.8mm