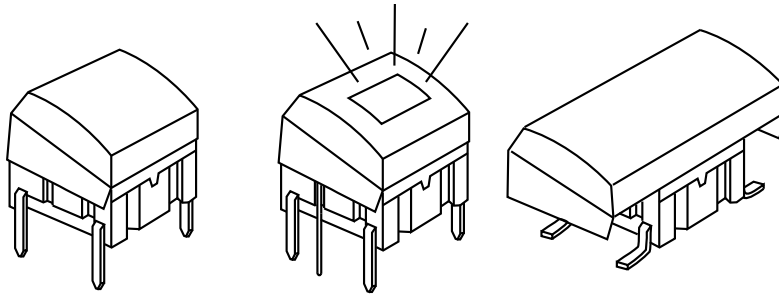


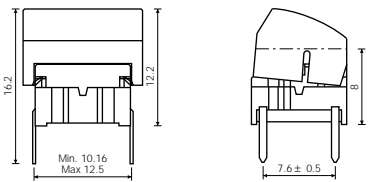
multimec® 3A + 1A/1H/1M



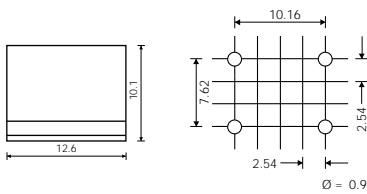
Technical Data:

- through-hole or SMD
- 50mA/24VDC
- single pole/momentary
- 10.000.000 operations life time
- IP67 sealing
- temperature range:
low temp: -40/+65°C
high temp: -40/+160°C

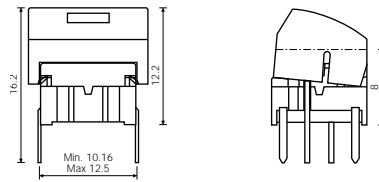
Dimensions (through-hole)



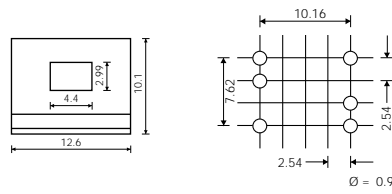
PCB layout



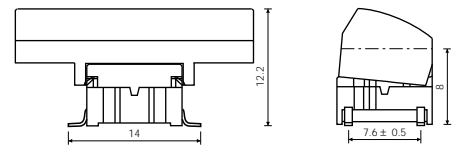
Dimensions (w/LED)



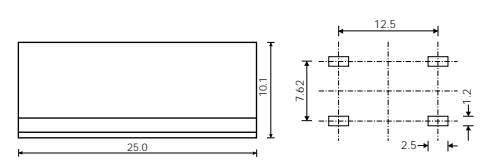
PCB layout (top view)



Dimensions (SMD)



PCB layout



HOW TO ORDER

3 A	<input type="checkbox"/>	<input type="checkbox"/>	+	1 A	<input type="checkbox"/>
Switch	Mounting	L 6 low temp. H 9 high temp.		Cap	00 blue 02 green 03 grey 04 yellow 06 white 08 red 09 black

Standard versions:
3ATL6, 3ATH9, 3ASH9

3 A	T	<input type="checkbox"/>	<input type="checkbox"/>	+	1 H	<input type="checkbox"/>	<input type="checkbox"/>
Switch	Mounting	L 6 low temp. H 9 high temp.	LED		Cap	00 blue 02 green 03 grey 04 yellow 06 white 08 red 09 black	Lens
	T through-hole		20 green 40 yellow 80 red				1 transparent 2 green 4 yellow 8 red

Standard versions:
3ATL620, 3ATL640, 3ATL680

3 A	<input type="checkbox"/>	<input type="checkbox"/>	+	1 M	<input type="checkbox"/>
Switch	Mounting	L 6 low temp. H 9 high temp.		Cap	00 blue 02 green 03 grey 04 yellow 06 white 08 red 09 black

Standard versions:
3ATL6, 3ATH9, 3ASH9

Ordering example: 3ATL680 + 1H098