

LOW PROFILE BOX HEADERS STRAIGHT PINS

.100" x .100" CENTERS



LR92984 E60980

PHYSICAL PROPERTIES

INSULATION MATERIAL: Glass filled thermoplastic rated UL 94V-0

COLOR: Blue

CONTACT MATERIAL: Phosphor bronze with 30μ inches min. gold over 50μ inches min. nickel plating

ELECTRICAL PROPERTIES

CURRENT RATING: 1 Amp

INSULATION RESISTANCE: >1 x 10⁹ Ohms @ 500 VDC

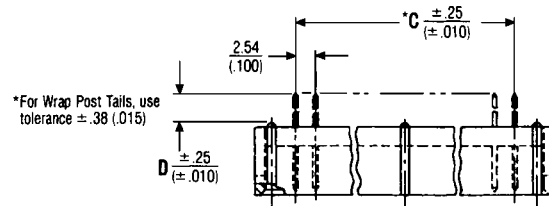
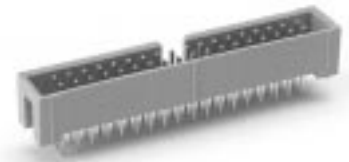
DIELECTRIC STRENGTH: >1000 VRMS @ sea level

ENVIRONMENTAL PROPERTIES

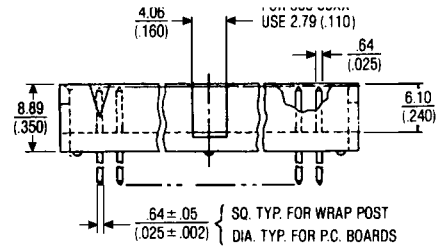
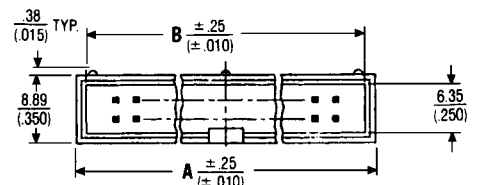
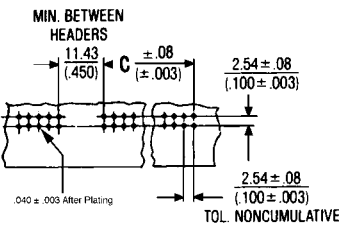
TEMPERATURE RATING: -55°C TO 125°C

MATING CONNECTORS

FEMALE SOCKETS: See pages 9-12



RECOMMENDED HOLE PATTERN



HOLE DIA. ±.08 (±.003) AFTER PLATING	TYPE OF CONTACT
.89 (.035)	PCB Solder Tails
1.14 (.045)	Wrap Post Tails

Ordering Information

CATALOG NUMBERS			NO. OF POS.	DIMENSIONS IN MM (INCHES)		
2.59 (.102) FOR 1.57 (.062) P.C. BOARDS	4.19 (.165) FOR 3.18 (.125) P.C. BOARDS	15.49 (.610) WRAP POST TAILS		A	B	C
609-0627	609-0637	609-0657	6	15.24 (.600)	12.70 (.500)	5.80 (.200)
609-0827	609-0837	609-0857	8	17.78 (.700)	15.24 (.600)	7.62 (.300)
609-1027	609-1037	609-1057	10	20.32 (.800)	17.78 (.700)	10.16 (.400)
609-1227	609-1237	609-1257	12	22.86 (.900)	20.32 (.800)	17.70 (.500)
609-1427	609-1437	609-1457	14	25.40 (1.000)	22.86 (.900)	15.24 (.600)
609-1627	609-1637	609-1657	16	27.94 (1.100)	25.40 (1.000)	17.75 (.700)
609-2027	609-2037	609-2057	20	33.02 (1.300)	30.48 (1.200)	22.86 (.900)
609-2427	609-2437	609-2457	24	38.10 (1.500)	35.56 (1.400)	27.94 (1.100)
609-2627	609-2637	609-2657	26	40.64 (1.6001)	38.10 (1.5001)	30.48 (1.2001)
609-3027	609-3037	609-3057	30	45.72 (1.800)	43.18 (1.700)	35.56 (1.400)
609-3427	609-3437	609-3457	34	50.80 (2.000)	48.26 (1.900)	40.64 (1.600)
609-3627	609-3637	609-3657	36	53.34 (2.100)	50.80 (2.000)	43.18 (1.700)
609-4027	609-4037	609-4057	40	58.42 (2.300)	55.88 (2.200)	48.26 (1.900)
609-4427	609-4437	609-4457	44	63.50 (2.500)	60.96 (2.400)	53.34 (2.100)
609-5027	609-5037	609-5057	50	71.12 (2.800)	68.58 (2.700)	60.96 (2.400)
609-5627	609-5637	609-5657	56	78.74 (3.100)	76.20 (3.000)	68.58 (2.700)
609-6027	609-6037	609-6057	60	83.82 (3.300)	81.28 (3.200)	73.66 (2.900)
609-6427	609-6437	609-6457	64	88.90 (3.500)	86.36 (3.400)	78.74 (3.100)

LOW PROFILE BOX HEADERS RIGHT ANGLE PINS

.100" x .100" CENTERS



LR92984 E60980

PHYSICAL PROPERTIES

INSULATION MATERIAL: Glass filled thermoplastic rated UL 94V-0

COLOR: Blue

CONTACT MATERIAL: Phosphor bronze with 30μ inches min. gold over 50μ inches min. nickel plating

ELECTRICAL PROPERTIES

CURRENT RATING: 1 Amp

INSULATION RESISTANCE: >1 x 10⁹ Ohms @ 500 VDC

DIELECTRIC STRENGTH: >1000 VRMS @ sea level

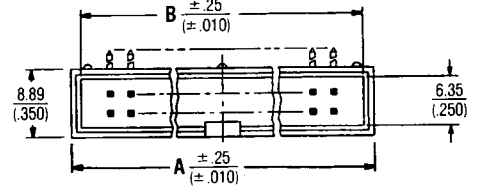
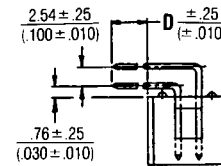
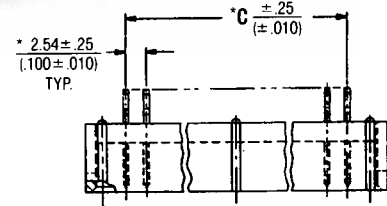
ENVIRONMENTAL PROPERTIES

TEMPERATURE RATING: -55°C To 125°C

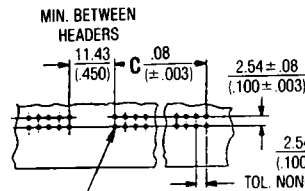
APPLICATION REFLOW TEMPERATURE RATING: -55°C To 125°C

MATING CONNECTORS

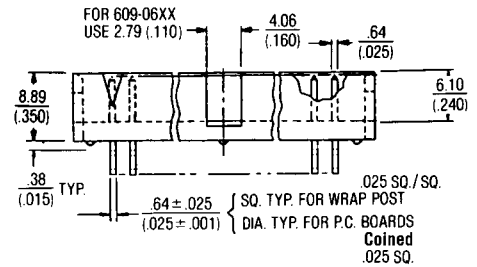
FEMALE SOCKETS: See pages 9-12



RECOMMENDED HOLE PATTERN



HOLE DIA. ±.08 (±.003) AFTER PLATING	TYPE OF CONTACT
.89 (.035)	PCB Solder Tails
1.14 (.045)	Wrap Post Tails



Ordering Information

CATALOG NUMBERS			NO. OF POS.	DIMENSIONS IN MM (INCHES)		
DIMENSION "D" IN MM (INCHES)				A	B	C
2.59 (.102) FOR 1.57 (.062) P.C. BOARDS	4.19 (.165) FOR 3.18 (.125) P.C. BOARDS	15.49 (.610) WRAP POST TAILS				
609-0607	609-0617	609-0647	6	15.24 (.600)	12.70 (.500)	5.80 (.200)
609-0807	609-0817	609-0847	8	17.78 (.700)	15.24 (.600)	7.62 (.300)
609-1007	609-1017	609-1047	10	20.32 (.800)	17.78 (.700)	10.16 (.400)
609-1207	609-1217	609-1247	12	22.86 (.900)	20.32 (.800)	17.70 (.500)
609-1407	609-1417	609-1447	14	25.40 (1.000)	22.86 (.900)	15.24 (.600)
609-1607	609-1617	609-1647	16	27.94 (1.100)	25.40 (1.000)	17.75 (.700)
609-2007	609-2017	609-2047	20	33.02 (1.300)	30.48 (1.200)	22.86 (.900)
609-2407	609-2417	609-2447	24	38.10 (1.500)	35.56 (1.400)	27.94 (1.100)
609-2607	609-2617	609-2647	26	40.64 (1.6001)	38.10 (1.5001)	30.48 (1.2001)
609-3007	609-3017	609-3047	30	45.72 (1.800)	43.18 (1.700)	35.56 (1.400)
609-3407	609-3417	609-3447	34	50.80 (2.000)	48.26 (1.900)	40.64 (1.600)
609-3607	609-3617	609-3647	36	53.34 (2.100)	50.80 (2.000)	43.18 (1.700)
609-4007	609-4017	609-4047	40	58.42 (2.300)	55.88 (2.200)	48.26 (1.900)
609-4407	609-4417	609-4447	44	63.50 (2.500)	60.96 (2.400)	53.34 (2.100)
609-5007	609-5017	609-5047	50	71.12 (2.800)	68.58 (2.700)	60.96 (2.400)
609-5607	609-5617	609-5647	56	78.74 (3.100)	76.20 (3.000)	68.58 (2.700)
609-6007	609-6017	609-6047	60	83.82 (3.300)	81.28 (3.200)	73.66 (2.900)
609-6407	609-6417	609-6447	64	88.90 (3.500)	86.36 (3.400)	78.74 (3.100)