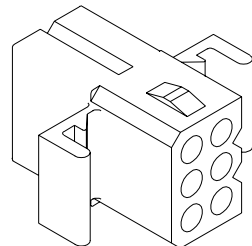
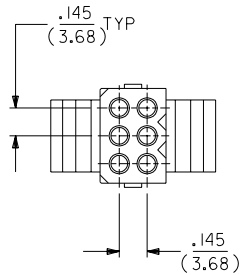
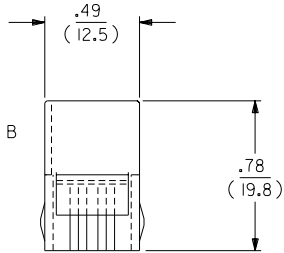
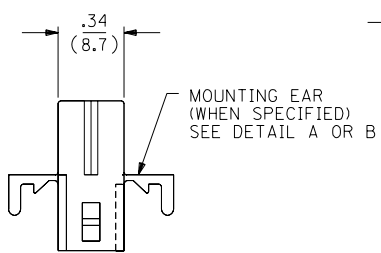
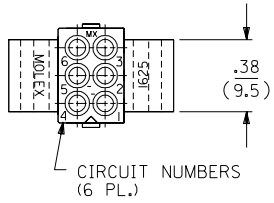
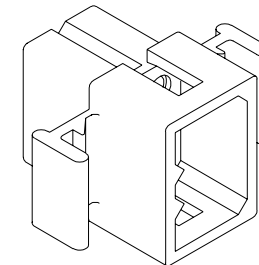
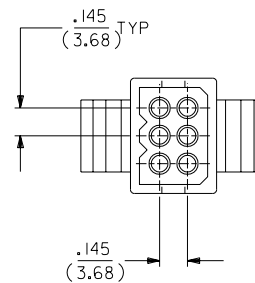
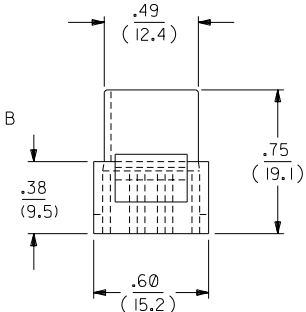
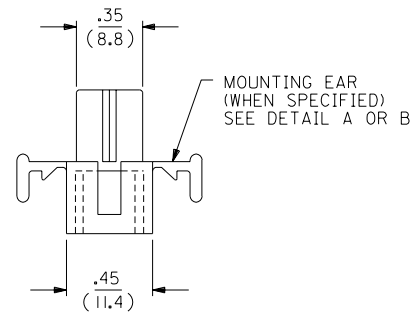
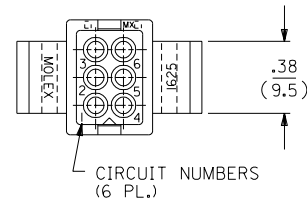


RECEPTACLE



SHOWN WITH STANDARD EAR

PLUG



SHOWN WITH STANDARD EAR

J OBSOLETE P/N
UCP2003-1545
AELHAG, 03/01/16

I OBSOLETE P/N
UCR2002-0270
COMERC1 01/9/26

H2 REVISED
UCR1998-0126
WANG 98-04-06

H1 ADD -R2 VERSION
PER ECN #16 0093
7-31-95 RW

H REVISED & REDRAWN
ECR # U81740
07-22-88 KBW

REV.	SH.	REV.	LTR.	REVISIONS
2	J			
1	J			

DIMENSIONS SHOWN (METRIC) INCH		UNLESS OTHERWISE SPECIFIED TOLERANCES: ANGULAR ± 1/2°		TITLE	
3 PLACE	± .010	---		.062/(1.57) HOUSINGS PLUG & RECEPTACLE 6 CIRCUIT, .145/(3.68) ⌀	
2 PLACE	± .014	± 0.25		MOLEX INCORPORATED	
1 PLACE	---	± 0.35		SHEET NO. DATE 1 OF 2 07/22/88	
DRAFT WHERE APPLICABLE MUST REMAIN WITHIN DIMENSIONS				PART NO. DRWG. NO. SD-1625-6*	
DRWG. BY KBW	CHK'D. BY RW	SCALE 2:1	FILE NAME M16256 564	THIS DRAWING CONTAINS INFORMATION THAT IS PROPRIETARY TO MOLEX INC. AND SHOULD NOT BE USED WITHOUT WRITTEN PERMISSION.	

PLUG		
ORDER NO	ENG NO	
03-06-2062	1625-6P	
03-06-2061	1625-6P1	
03-06-7062	1625-6PBK	
03-06-7061	1625-6P1BK	OBSOLETE
03-06-7063	1625-6POR	OBSOLETE
-	-	

RECEPTACLE		
ORDER NO	ENG NO	
03-06-1061	1625-6R	
03-06-1062	1625-6R1	
03-06-6061	1625-6RBK	
03-06-6062	1625-6R1BK	OBSOLETE
03-06-6063	1625-6R0R	OBSOLETE
03-06-6064	1625-6RBU	
NOT TOOLED	1625-6R2	

LEGEND:

1625-6****

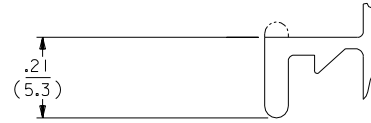
CIRCUIT SIZE

P = PLUG
R = RECEPTACLE

BLANK = WITH STANDARD EARS
1 = WITHOUT EARS
2 = WITH PREBENT EARS

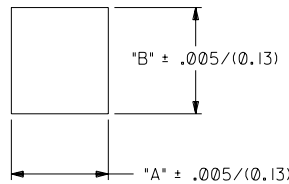
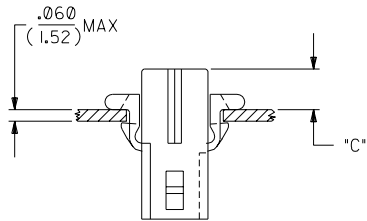
COLOR:

BLANK = NATURAL COLOR
AM = AMBER BK = BLACK BU = BLUE
BN = BROWN GY = GRAY GN = GREEN
OR = ORANGE RD = RED YW = YELLOW

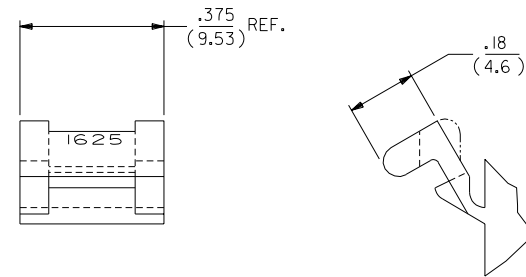


DETAIL A

.062/(1.57) STANDARD MOUNTING EAR
(SCALE 4:1)



HOUSING	DIM. "A"	DIM. "B"	"C" PREBENT EAR	"C" STANDARD EAR
PLUG	.607/(15.42)	.615/(15.62)	.22/(5.6)	.18/(4.6)
RECEPT.	.505/(12.83)	.552/(14.02)	.23/(5.8)	.19/(4.8)



DETAIL B

.062/(1.57) PREBENT MOUNTING EAR
(SCALE 4:1)

NOTES:

1. MOLEX PRODUCT SPEC 02-06 APPLIES
2. MATERIAL: NYLON TYPE 6/6, 94V-2

LTR.	REVISIONS	LTR.	REVISIONS

DIMENSIONS SHOWN (METRIC) INCH	
UNLESS OTHERWISE SPECIFIED TOLERANCES: ANGULAR ± 1/2°	
3 PLACE ± .010	---
2 PLACE ± .014	± 0.25
1 PLACE ---	± 0.35
DRAFT WHERE APPLICABLE MUST REMAIN WITHIN DIMENSIONS	
DRWG. BY: KBW	CHK'D. BY: RW
APP'D. BY: RAS	SCALE: :

▽ =	▼ =	REVISE ONLY ON CAD SYSTEM
TITLE .062/(1.57) HOUSINGS PLUG & RECEPTACLE 6 CIRCUIT, .145/(3.683) C		
MOLEX INCORPORATED L15LE,ILL. 60532 U.S.A.	SHEET NO. 2	DATE 07/22/88
PART NO. SEE CHART	DRWG. NO. SD-1625-6*	
FILE NAME M16256	THIS DRAWING CONTAINS INFORMATION THAT IS PROPRIETARY TO MOLEX INC. AND SHOULD NOT BE USED WITHOUT WRITTEN PERMISSION.	
CP	CP	C