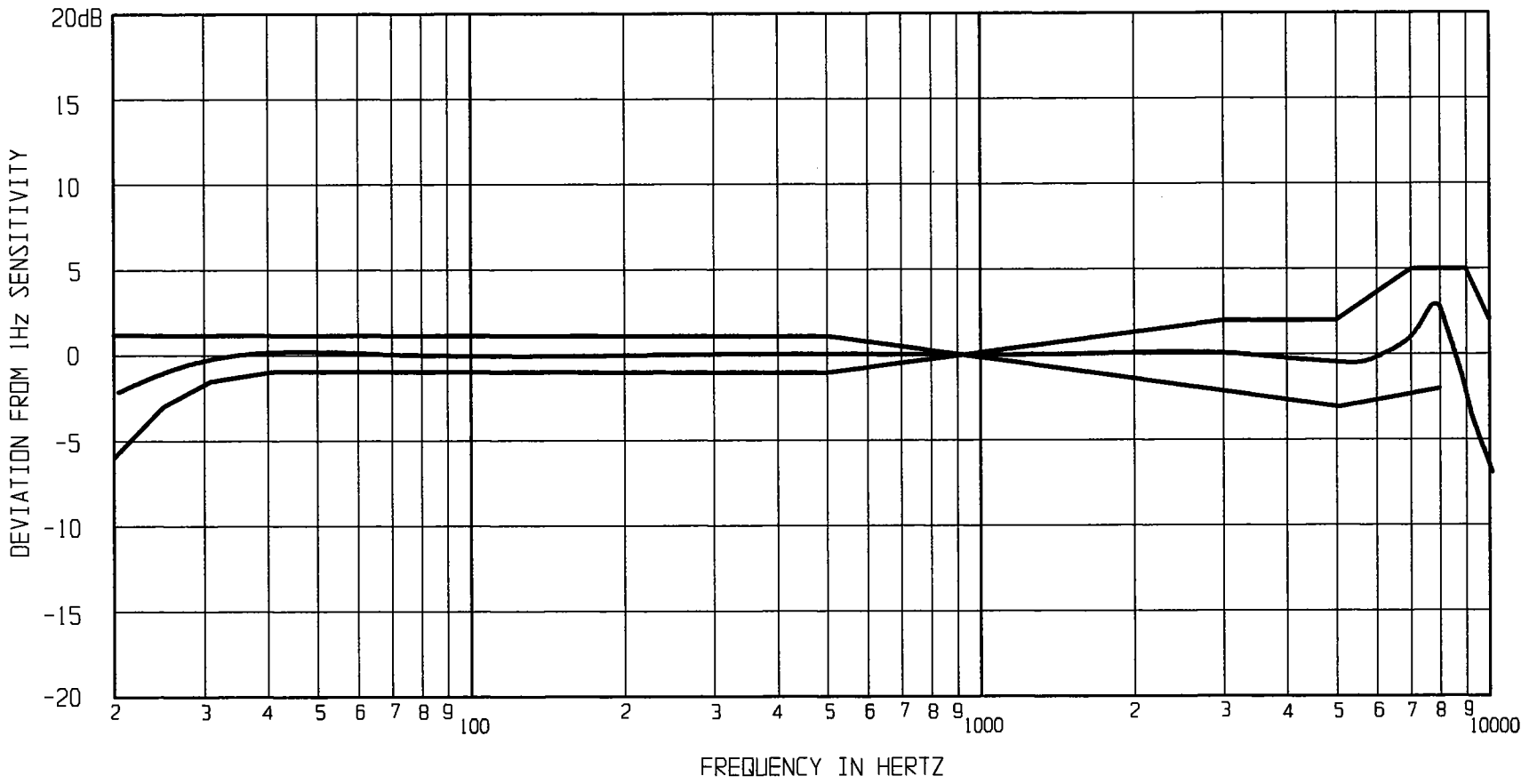


NOTE:

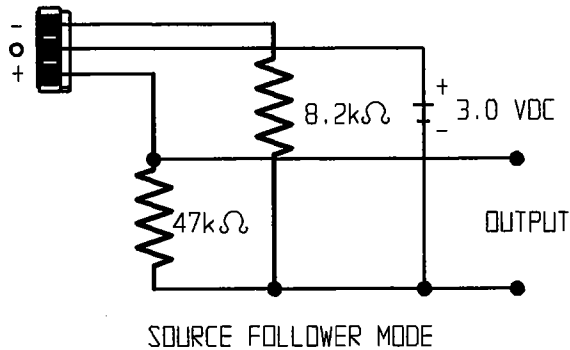
When test limits are used to establish incoming inspection acceptance/rejection criteria, correlation of test equipment with Knowles is also required for elimination of equipment and test method variations.



1. PRESSURE SENSITIVITY IN dB RELATIVE TO 1.0 VOLT/MICROBAR (0.1 N/m^2) UNDER THE TEST CONDITIONS SHOWN, IN #8 BELOW.
2. BATTERY CURRENT DRAIN: 160 μ A MAX.
3. OUTPUT IMPEDANCE: 4000 OHMS NOMINAL.
4. V_L AT OUTPUT IN SOURCE FOLLOWER MODE: 0.9 TO 1.9 VDC.
5. CASE CONNECTED TO NEGATIVE TERMINAL.
6. "A" WEIGHTED NOISE (1kHz EQUIVALENT SPL) IN 3 WIRE MODE WITH 1.3 VDC SUPPLY: 34 dB MAX.

7.	SENSITIVITY			DEVICE CONFORMITY	
	FREQUENCY	MIN.	NOM.	RANGE OF DEVIATION FROM 3 kHz	
	20	---	-71.5	-6.0	+1.0
	25	---	-70.0	-2.5	---
	31	---	-69.5	-1.5	---
	40	---	-69.0	-1.0	---
	500	---	-69.0	-1.0	+1.0
	1000	-72.0	-69.0	0.0	0.0
	3000	---	-69.0	-2.0	+2.0
	5000	---	-69.5	-3.0	+2.0
	7000	---	-68.0	---	+5.0
	8000	---	-67.5	-2.0	+5.0
	9000	---	-73.0	---	+5.0
	10000	---	-79.0	---	+2.0

8. TEST CONDITIONS:



KNOWLES ELECTRONICS
KNOWLES ELECTRONICS, INC. ITASCA, ILLINOIS U.S.A.
KNOWLES ELECTRONICS, CO., BURGESS HILL, SUSSEX, ENGLAND

MICROPHONE
PERFORMANCE SPECIFICATION

BL-1785
SHT 2.1

DR. BY: WK
DATE: 4-5-76

CH. BY: KHW
DATE: 4-5-76

APP. BY: KHW
DATE: 4-5-76

ISSUE: 1