

SF 2030 SF 2032	Rated Current A	Leakage Current @ 250V 50Hz	Inductance mH	Connections Input Output	Resistor Value MΩ	Number of Fuses	Mounting	Approvals UL IEC CE
<b>Standard Version</b>								
SF 2030-2/01	2	0.2mA	2.0	IEC 320 6.3 x 0.8 Faston	1	1	Snap-in	■ ■ ■
SF 2032-2/01	2	0.2mA	2.0	IEC 320 6.3 x 0.8 Faston	1	2	Screw Mount	■ ■ ■
SF 2030-6/01	6	0.2mA	0.5	IEC 320 6.3 x 0.8 Faston	1	1	Snap-in	■ ■ ■
SF 2032-6/01	6	0.2mA	0.5	IEC 320 6.3 x 0.8 Faston	1	2	Screw Mount	■ ■ ■
<b>Medical Version</b>								
SF 2030M-2/01	2	5μA	2.0	IEC 320 6.3 x 0.8 Faston	1	1	Snap-in	■ ■ ■
SF 2032M-2/01	2	5μA	2.0	IEC 320 6.3 x 0.8 Faston	1	2	Screw Mount	■ ■ ■
SF 2030M-6/01	6	5μA	0.5	IEC 320 6.3 x 0.8 Faston	1	1	Snap-in	■ ■ ■
SF 2032M-6/01	6	5μA	0.5	IEC 320 6.3 x 0.8 Faston	1	2	Screw Mount	■ ■ ■
<b>Surge Protected Version (IEC 950 not applicable)</b>								
SF 2030Z-2/01	2	0.2mA	2.0	IEC 320 6.3 x 0.8 Faston	1	1	Snap-in	■ ■ ■
SF 2032Z-2/01	2	0.2mA	2.0	IEC 320 6.3 x 0.8 Faston	1	2	Screw Mount	■ ■ ■
SF 2030Z-6/01	6	0.2mA	0.5	IEC 320 6.3 x 0.8 Faston	1	1	Snap-in	■ ■ ■
SF 2032Z-6/01	6	0.2mA	0.5	IEC 320 6.3 x 0.8 Faston	1	2	Screw Mount	■ ■ ■

**Temperature Range:** -25°C to +85°C  
**Operating Voltage:** 250Vac  
**Operating Frequency:** 0 to 400Hz  
**Test Voltage:** L+N to ground, 2700Vdc, 2 seconds

**Varistor**  
 Zinc oxide type; energy absorption 21 Joules (current impulse defined in IEC 60-2 Section 6). Varistor voltage: 430Vdc(measured at 1mA); clamping voltage 710V at 10A

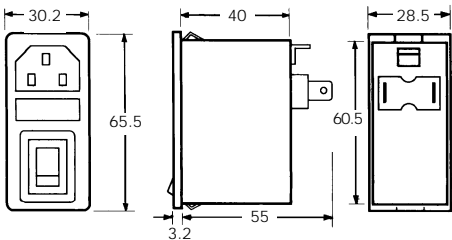
■ Approved  
 □ Submitted for Approval

IEC 950 (EN 60950) Applications)  
 Twin fused version only

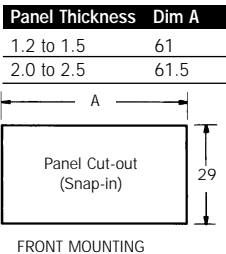
## DIMENSIONS

All dimensions are nominal and in mm

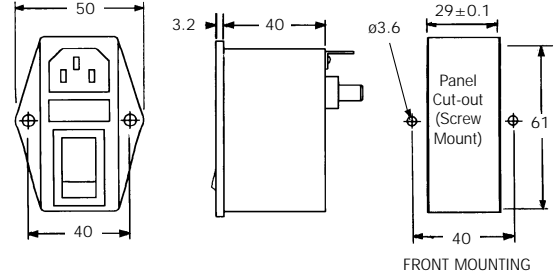
### SF 2030 (Single Fuseholder Snap-in)



### Panel Cut-out Details

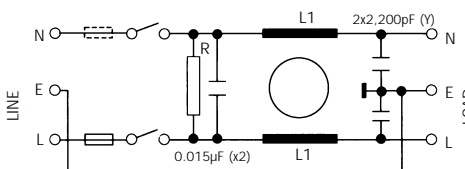


### SF 2032 (Double Fuseholder Screw Mount)

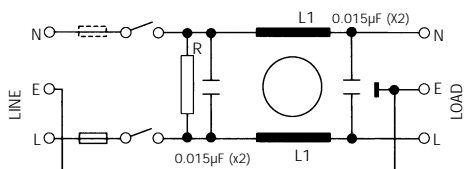


## CIRCUIT DIAGRAMS

### Standard Version



### Medical Version (Suffix 'M')



### Surge Protected Version (Suffix 'Z')

