

X

第 01 版

CUSTOMER Y02

Approval Sheet

DESIGNED NO.: SWITCHING POWER SUPPLIES




MODEL NO.: EPA-121DA-12

ENG NO.: @3A-121DA12-073

136245T

APPROVAL		

- Remark: 1).Please approve and sign back to ENG ELEC.
 2).If there is no signing back,this Approval sheet will be regarded as being approved automaticly once the first P.O. of the model specified in the sheet is issued.

SUPPLIER		
DESIGN	CHECKED	APPROVED
		



英格爾

英格爾科技股份有限公司

ENG ELECTRIC CO., LTD.

台灣省桃園縣龜山鄉民生北路1段536號5樓

5F,NO.536,Sec.1.Min Sheng N.Rd;Kweishan Hsiang,Taoyuan Hsien,Taiwan,R.O.C.

TEL: 886-3-2121133, 886-3-212199

FAX: 886-3-2121561

深圳英格爾電子有限公司

SHENZHEN ENG ELECTRONICS CO., LTD.

深圳市寶安區福永鎮白石廈中核集團B棟

Block B, Nuclear Group Industrial District, Baishixia, Fuyong Town, Bao'an, Shen Zhen China

TEL: 86-755-27307512,27307515,27308750,27308755,27307208,27308202

FAX: 86-755-27308049

X

SHENZHEN ENG ELECTRONICS CO., LTD.

FILE NO.: EN-RDS-H081

FILE: @3A-121DA12-073

產品承認書 SHEET: 01

1 Product Characteristics:

1.1 General Description

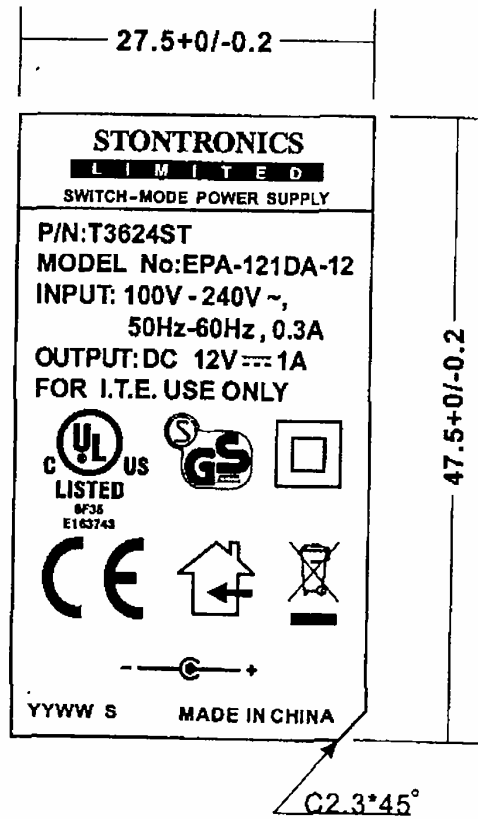
Model @EPA-121DA-12 is a universal switching-mode power supply, operating at input voltage 90VAC to 255VAC and output voltage of 12VDC with 1A DC load

1.2 Electric Characteristics

1.2.1 Input

No	ITEM	SPECIFICATION
1.	Rated input Voltage	AC100V-240V
	Vibration input Voltage Range	AC90V-255V
2.	Frequency Rated	50-60Hz
	Frequency Vibration	47-63Hz
3.	Input Rated Current	300mA RMS Max
	Inrush Current	30A Max .at 115vac cool start
		50A Max. at 230vac cool start
4.	Leakage current	0.25mA
5.	Efficiency	60% Min.

Att.1



UNIT: mm

YYWW S YY:YEAR WW:WEEK S:FU YONG

ALUMINUM NAMEPLATE: ○ BLACK WORD ON SILVER BASE

○ SILVER WORD ON BLACK BASE

METALIZED POLYESTER: ● BLACK WORD ON SILVER BASE

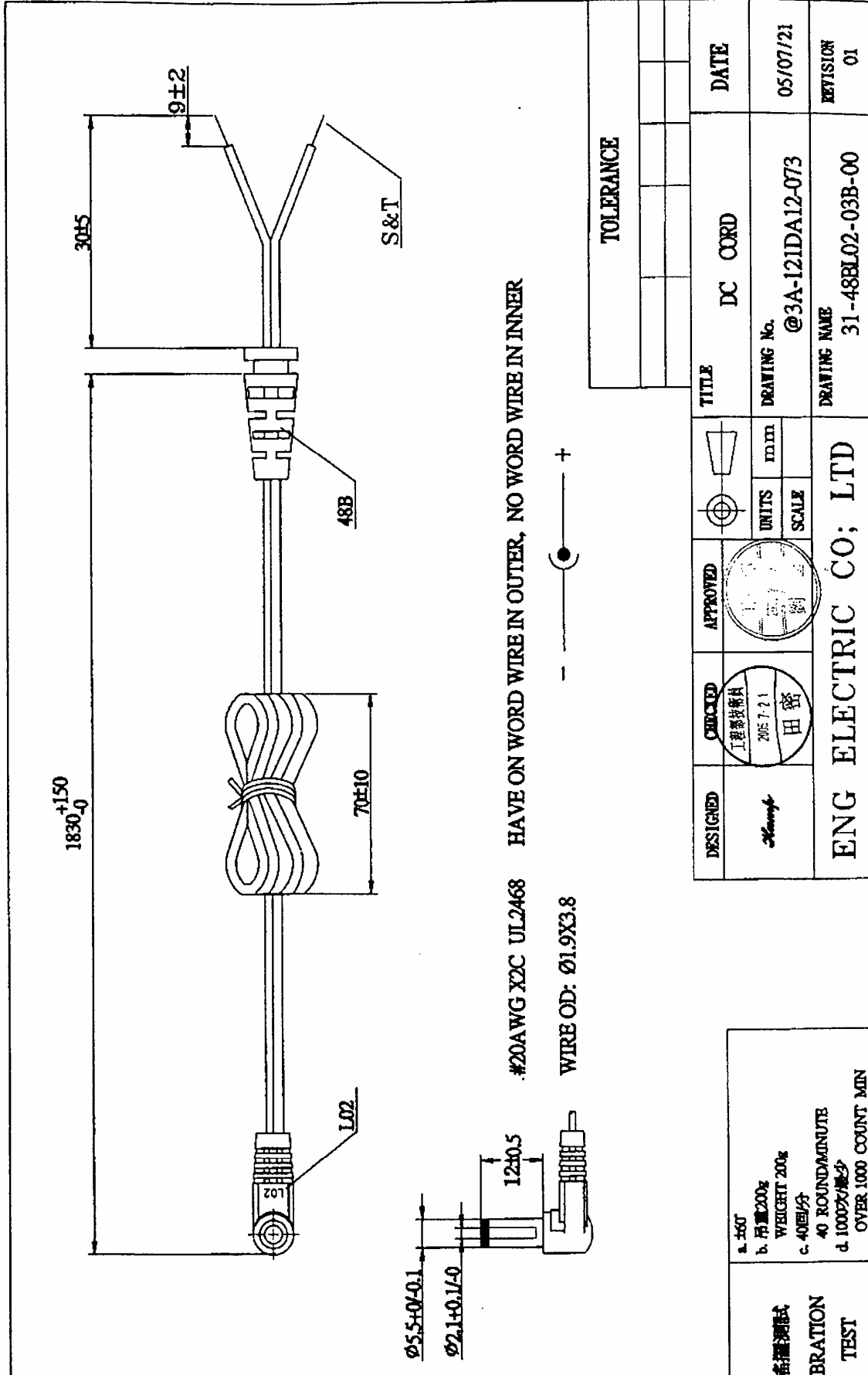
(SILVER MATTE)

○ SILVER WORD ON BLACK BASE

@3A-121DA12-073

TOLERANCE				

DESIGNED	CHECKED	APPROVED		TITLE	DATE
Hump				LABEL	05/07/21
			UNITS	DRAWING No.	
			mm	N0Y02-0110	
			SCALE	DRAWING NAME	REVISION
			2:1		



X