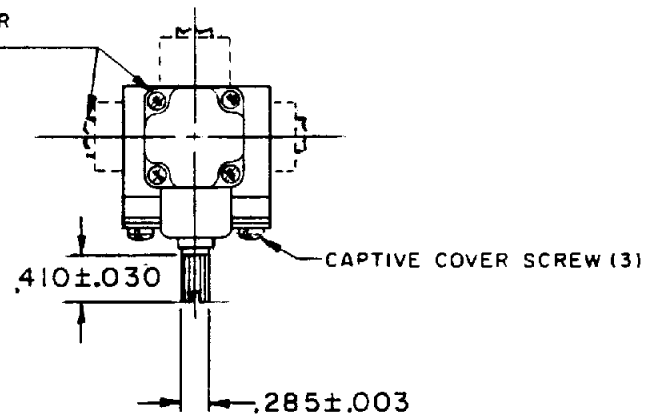
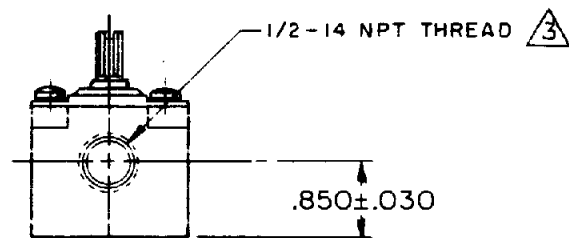
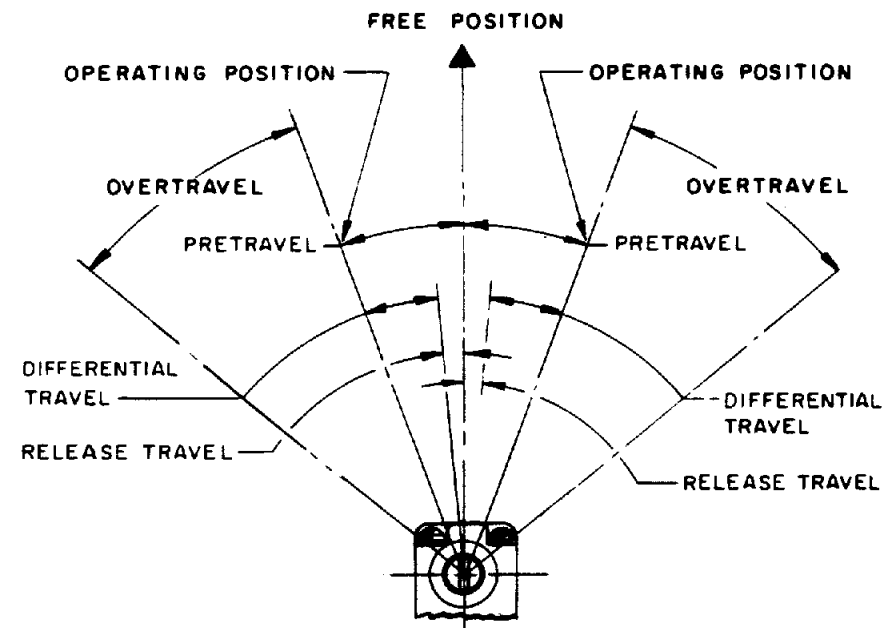
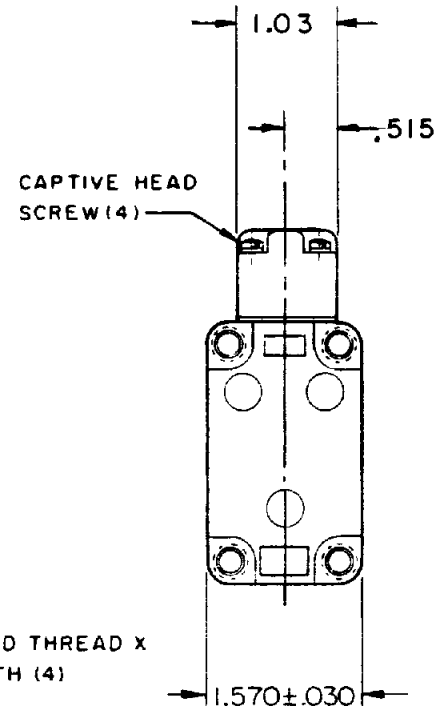
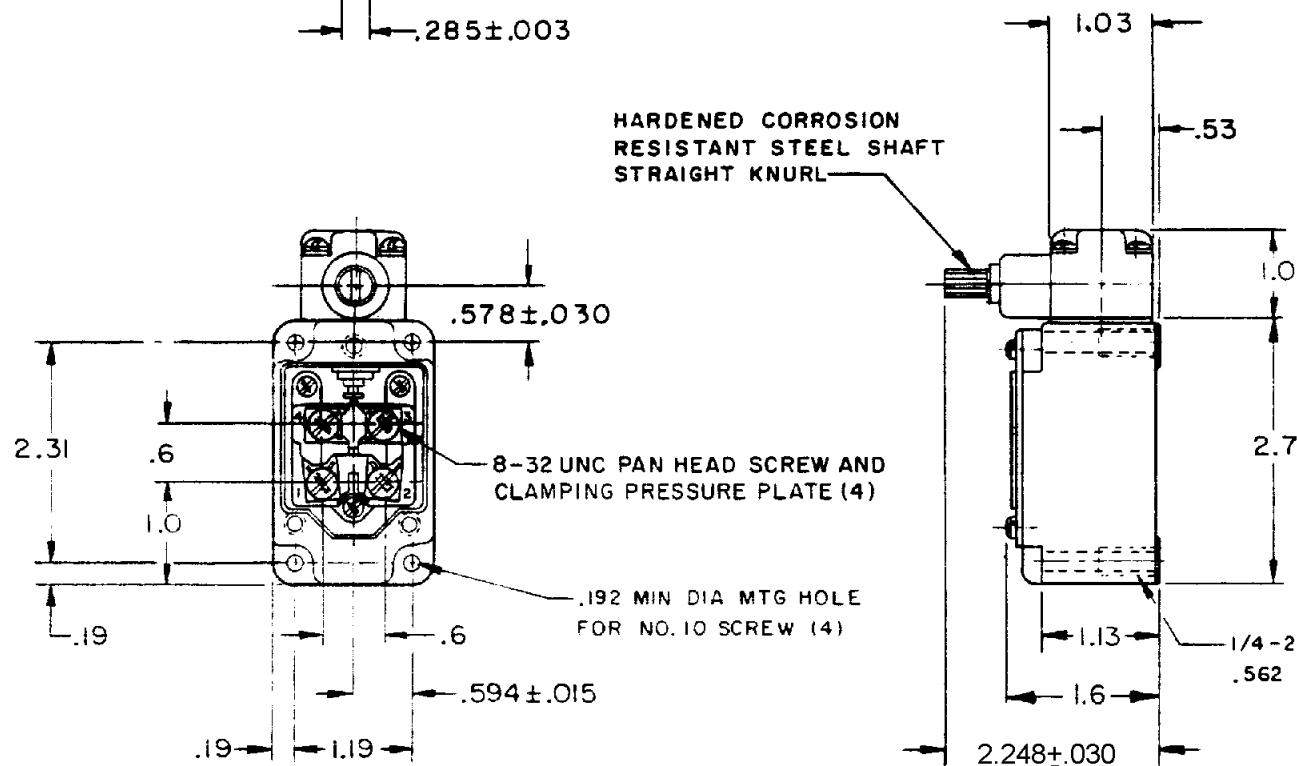


OPERATING HEAD MOUNTS
 IN ANY OF FOUR
 POSITIONS



HARDENED CORROSION
 RESISTANT STEEL SHAFT
 STRAIGHT KNURL



THIS DRAWING COVERS A PROPRIETARY ITEM AND IS THE PROPERTY OF MICRO SWITCH, A DIVISION OF MINNEAPOLIS-HONEYWELL REGULATOR CO. THIS DRAWING IS NOT TO BE COPIED OR USED WITHOUT THE APPROVAL OF MICRO SWITCH.

CHARACTERISTICS	ELECTRICAL DATA	SCALE 1/2 TO 1
OPERATING TORQUE — — 30 IN OZ MAX	CONTACT ARRANGEMENT (SEE CIRCUIT DIAGRAM)	DO NOT SCALE PRINT
FULL OVERTRAVEL TORQUE — 40 IN OZ MAX	10A-120, 240, OR 480 VAC, 1/3 HP - 120 VAC	UNLESS OTHERWISE NOTED
RELEASE TORQUE — — — 4 IN OZ MIN	3/4 HP - 240 VAC; 0.8A - 115 VDC; 0.4A - 230 VDC	DIMENSIONS ARE IN INCHES
PRETRAVEL — — — — — 20° MAX	.1A - 550 VDC	TOLERANCES ARE:
DIFFERENTIAL TRAVEL — — — 12° MAX	PILOT DUTY: 600 VAC MAX	ONE PLACE (.0) ± .030
OVERTRAVEL — — — — — 30° MIN		TWO PLACE (.00) ± .015
RELEASE TRAVEL — — — — — 5° MIN		THREE PLACE (.000) ± .008
SWITCH-BASIC REPLACEMENT — — — 2 MNI		ANGLES ±
		WEIGHT

- NOTES
- SWITCH IS ASSEMBLED FOR ACTUATION IN EITHER DIRECTION BUT MAY BE ADJUSTED TO ACTUATE THE SWITCH IN THE CLOCKWISE DIRECTION ONLY, THE COUNTERCLOCKWISE DIRECTION ONLY, OR IN BOTH DIRECTIONS
 - TO CONVERT SWITCH FOR ACTUATION IN EITHER THE CLOCKWISE OR COUNTERCLOCKWISE DIRECTION ONLY, REMOVE ACTUATOR HEAD AND ROTATE THE NOTCHED PLUNGER 90° TO THE RIGHT FOR CLOCKWISE ACTUATION OR 90° TO THE LEFT FOR COUNTERCLOCKWISE ACTUATION
- ③ SEAL TO BE FURNISHED BY USER

CATALOG LISTING 1LS23 PAGE 1 OF 1
 ISSUE 12
 REVISIONS:
 A CO15200 M B F 17 JUNE 65
 B CO23403 R R R 25 SEP 68
 C CO25152 R R R 22 APR 69
 D CO50952
 E CO53005-D C J H 3 JUN 83
 F CO65814-E G R T 21 NOV 90
 H CO77031 J D B 17 DEC 93
 J 202823 C S L 11 APR 01
 RASTER
 FO-80378-003
 DRAWN M B F 17 JUNE 65
 CHECK L S L 17 JUNE 65
 REPLACES 21 JUN 65
 CHECK W C S 21 JUN 65
 RELEASE NO.