

Sealed, Illuminated Rocker Switches

Attractive and Rugged for Wet & Dusty Environments

K3
Sealed
Rockers

Quality Features:

- Sealed watertight per IP68.
- Snap-in panel mounting into industry standard panel cutout.
- Optional panel seal gasket.
- Thru-panel drain option.
- LED, neon and incandescent lighting.
- .250" Q.C. terminals.
- Optional one-piece connector.
- Optional terminal barriers.
- Low level to 20 amp switch.



The OTTO K3 series is a quality, precision switch designed to comply with standards established for appliance, marine (ignition protection) and off-road vehicles along with other demanding applications where rugged rocker switches are required.

K3 series sealed rocker switches snap into industry-standard panel cutouts. Choose illuminated and printed legends, thru-panel drain option, and switching compatibility from low level to 20 amps.

The K3 series offers a choice of LED, incandescent and neon illumination. Legends can be stamped onto a non-illuminated button, stamped onto an illuminated lens, or laser etched into the lens and backlit.

Available in standard and low level contact ratings, the K3 rockers will fit a wide range of applications. Expect a minimum of 25,000 cycles at a full rated load of 20 amps resistive or 15 amps inductive. 100,000 cycles are possible at low level loads. A full complement of switch operation is available including momentary and maintained action in 2- or 3-position switches in SPST, SPDT, SPTT, DPST, and DPDT circuit arrangements.

OTTO can provide custom colors upon request. Value-added assemblies with wire leads are also available. Please consult the factory for assistance.

Standard Characteristics/Ratings:

OPERATIONAL:

Mechanical Life: 100,000 cycles, minimum

Seal: Watertight to IP68

Operating Temperature Range: -40°C to +85°C

Case/Bezel: Thermoplastic. Choice of red, black, or white

Actuator: Thermoplastic. Choice of red, black or white

Mounting: Snap-In from front into industry standard panel cutout

Contacts: Silver Alloy. Gold flash for low level

Terminals: Brass 1/4" Q.C. Standard

Light Source: 6V, 12V, 24V Incandescent; 125V, 250V Neon; 2V, 6V, 12V, 24V red, green, amber LED

ELECTRICAL:

Load Type	Current Rating		Life (Min.)
	12V & 28V	110VAC	
Resistive	20A	16A	25,000 cycles
Inductive	15A	15A	25,000 cycles
Lamp	5A	5A	25,000 cycles

Motor Load: 3/4 HP at 120 and 240 VAC

Dielectric Withstand: 1050 Vrms

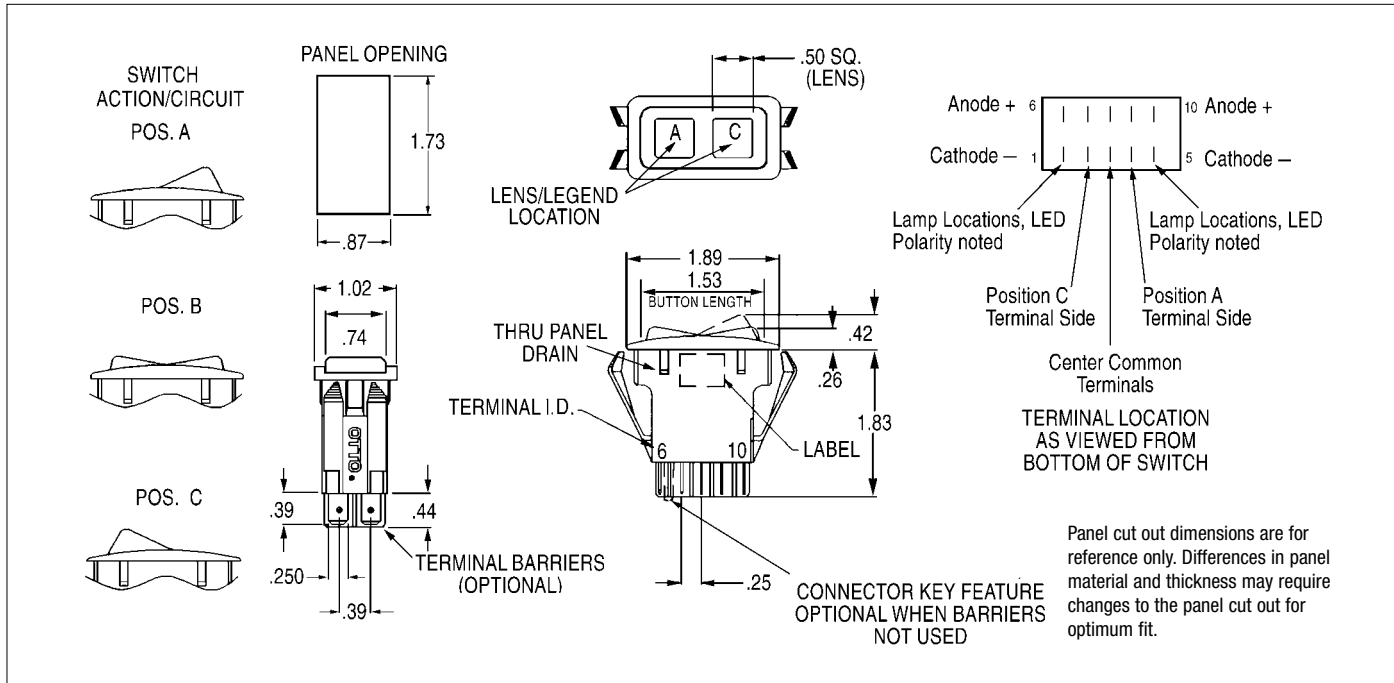
Compliance Standards (Pending):

EN61508-1 for appliance switches

UL 1054 for special use switches

UL 1500 for ignition protection of marine products

SAE J1455 for heavy duty trucks



K3 Series PART

K 3 X X

XX X

X

Terminal Style/ Switch Rating	Bezel and Actuator Color and Case Style	Code	Switch Action/Circuit Position "A"	Position "B"	Position "C"	Circuit	Light Source Type	Light Circuit
A. Without Terminal Barriers/ Standard	A. Black Rocker and Bezel with Drain Holes	1A	ON	NONE	OFF	SPST	A. No Illumination	A. No Light
		2A	ON	NONE	OFF	DPST	B. 6V Incandescent	B. Dep. in "A"
B. Without Terminal Barriers & Connector Keying Pin/ Standard	B. Black Rocker and Bezel without Drain Holes	1B	ON	NONE	ON	SPDT	C. 12V Incandescent	C. Dep. in "C"
		2B	ON	NONE	ON	DPDT	D. 24V Incandescent	D. Ind. in "A"
C. With Terminal Barriers/ Standard	C. Red Rocker and Bezel with Drain Holes	1C	MOM-ON	NONE	OFF	SPST	E. 125 VAC Neon	E. Ind. in "C"
		2C	MOM-ON	NONE	OFF	DPST	F. 250 VAC Neon	F. Dep. in "A" & "C"
D. Without Terminal Barriers/ Low Level	D. Red Rocker and Bezel without Drain Holes	1D	MOM-ON	NONE	ON	SPDT	G. 2V Red LED	G. Dep. in "A" & Ind. in "C"
		2D	MOM-ON	NONE	ON	DPDT	H. 2V Green LED	H. Ind. in "A" & Dep. in "C"
E. Without Terminal Barriers & Connector Keying Pin/ Low Level	E. White Rocker and Bezel with Drain Holes	1E	MOM-ON	OFF	MOM-ON	SPDT	J. 2V Amber LED	J. Ind. in "A" & "C"
		2E	MOM-ON	OFF	MOM-ON	DPDT	K. 6V Red LED	
F. With Terminal Barriers/ Low Level	F. White Rocker and Bezel without Drain Holes	1F	ON	OFF	ON	SPDT	L. 6V Green LED	
		2F	ON	OFF	ON	DPDT	M. 6V Amber LED	
		1G	MOM-ON	OFF	ON	SPDT	N. 12V Red LED	
		2G	MOM-ON	OFF	ON	DPDT	P. 12V Green LED	
		1H	ON	ON	OFF	SPDT	Q. 12V Amber LED	
		1J	ON	ON	NONE	SPDT	R. 24V Red LED	
		2J	ON	ON	NONE	DPDT	S. 24V Green LED	
		1K	MOM-ON	ON	OFF	SPDT	T. 24V Amber LED	
		1L	MOM-ON	ON	NONE	SPDT		
		2L	MOM-ON	ON	NONE	DPDT		
		1M	ON	ON	ON	SPTT		
		1N	MOM-ON	ON	ON	SPTT		
		1P	MOM-ON	ON	MOM-ON	SPTT		
		2R	ON/ON	OFF/ON	OFF/OFF	DPDT		
		2S	MOM-ON/ON	OFF/ON	OFF/OFF	DPDT		

Contact factory for panel recommendations on switches with potting cups.

Stop Here for unlighted switches without legends. The switch you have specified will be supplied with a rocker button without lenses and without legends. Example: K3AA1EAA.

Sealed, Illuminated Rocker Switches

K3
Sealed
Rockers

Attractive and Rugged for Wet & Dusty Environments

Part Numbering Example:
K3DB1ENJ-21T1T2994

Switch Description

K3 rocker switch
for low level switching, without terminal barriers,
featuring a black rocker and bezel without drain holes
in a SPDT, Mom On – Off – Mom On circuit arrangement
with 12VDC red LEDs
lit independently in both positions

K3
D
B
1E
N
J
-
2
1
T1
T2
9
9
4

Switch Description

Green lens in Position A and a Red lens in Position C are respectively pad-printed with Rabbit Legend in Position A and Turtle Legend in Position B both in white
with the legends rotated 270° so that the switch can be mounted in the panel vertically with the Rabbit at the top of the switch.

NUMBERING CODE

Lens Color	
Position "A"	Position "C"
0. No Lens	0. No Lens
1. Red	1. Red
2. Green	2. Green
3. Amber	3. Amber
4. Clear	4. Clear
5. No Lens/ Backlit Legend	5. No Lens/ Backlit Legend
6. Blue	6. Blue
9. White	9. White

Legend Style	
Position "A"	Position "C"
Refer to Legend Table for Legend Codes.	

Legend Color	
Position "A"	Position "C"
1. Red	1. Red
2. Black	2. Black
9. White	9. White
B. Backlit/ Daylight White	B. Backlit/ Daylight White
D. Backlit/ Deadfront	D. Backlit/ Deadfront
Z. No Legend	Z. No Legend

Legend Rotation	
1. Standard	
2. 90°	
3. 180°	
4. 270°	

Stop Here for lighted switches without legends. The switch you have specified will be supplied with a rocker button with lenses, but without legends.
Example: K3AA1DNH-A41

Connector: Part Number 801775-2A without latches.
Part Number 801775-2B with latches.
Panel Seal Gasket: Part Number 807037.

Order separately for use with switches without drain holes.

Panel Plug: Part Number C401912-2.
Lighted version available. Contact factory.

Standard Legends Per SAE Specifications

A1	 Anchor	K2	 Unlock	P5	 Bilge Blower
B1	 Battery	L1	 Light	R1	 Lift
B2	 Electric Power	L2	 Master Lighting Switch	R2	 Lower
C1	 AC/Cooling Systems	L3	 Headlights	R3	 Up
C2	 Dehumidifier	L4	 Headlights-Low / Dipped Beam	R4	 Down
C3	 Heater/Interior Heating	L5	 Headlights-High / Upper Beam	R5	 Right
D1	 Windshield Defroster	L6	 Parking Light	R6	 Left
D2	 Rear Window Defroster	L7	 Work Light	R7	FWD Forward
D3	 Mirror Defroster	L8	 Work Lamp	R8	REV Reverse
E1	 Engine/Start	L9	 Interior Dome Light	S1	 Radio
E2	 Engine/Stop	M1	 Beacon	S2	 Mute
E3	 On/Start	M2	 Hazard / Position Lights	T1	 Fast
E4	 Off/Stop	M3	 Clearance Lights	T2	 Slow
E5	ON On	M4	 Side Marker Light	T3	 Trim Tab Trimming Operation
E6	OFF Off	M5	 Running Lights (under power)	T4	 Transmission
E7	 Engine Electric Preheat	M6	 Anchor Light	V1	 Ventilating / AC Fan
E8	 Engine-Gas Injection	M7	 Running/Anchor Lights	W1	 Windshield Wiper
F1	 Front Fog Lights	M8	 Search Light	W2	 Windshield-Washer
F2	 Rear Fog Lights	M9 MA	 Turn Signals Left Turn Signals Right	W3	 Windshield-Washer/Wiper
G1	 Fuel	P1	 Bilge Pump #1	W4	 Rear Window Wiper
H1	 Horn	P2	 Bilge Pump #2	W5	 Rear Window Washer
H2	 Horn Rear	P3	 Bilge Pump #3	W6	 Rear Window-Washer/Wiper
K1	 Lock	P4	 Bilge Pump	ZZ	No Legend

For legends not shown, please consult an OTTO representative.