



Jelly Beans Series
Multi-Colored Terminal Blocks

PART#: JB-OTB-358

Type:
Color-Coded Medium-Power Thru Panel

Features:
Thru-panel, barrier construction
Plastic, finger-safe cover included
Color-coded terminal positions

Applications:
Suitable for:
Motor/Industrial/Pump Controls
Electrical Switch Gear
Off-Highway Vehicles

Electrical
Rated Voltage:
600V
Rated Current:
60A

Wire Size:
3-10AWG CU

Operating Temperature:
-40C to +90C

Materials
Housing:
Polycarbonate (UL94V-0)

Cover:
Polycarbonate (UL94V-0), clear

Terminal:
Brass, Nickel Plated

Positions Available:
1-15

Screw Size:
M5x12L, Steel, Nickel plated

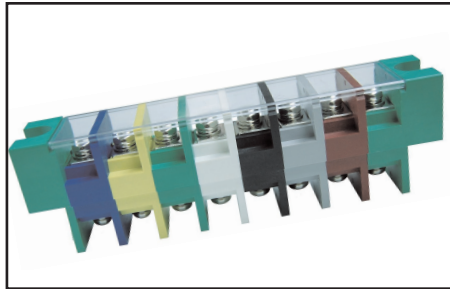
Withstanding Voltage:
AC2500V

Torque:
2 inch lbs.

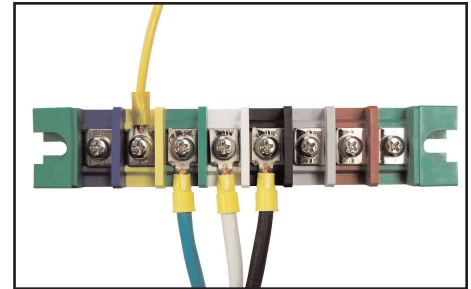
Brand New! Unique Product Development!

Pitch: 16mm

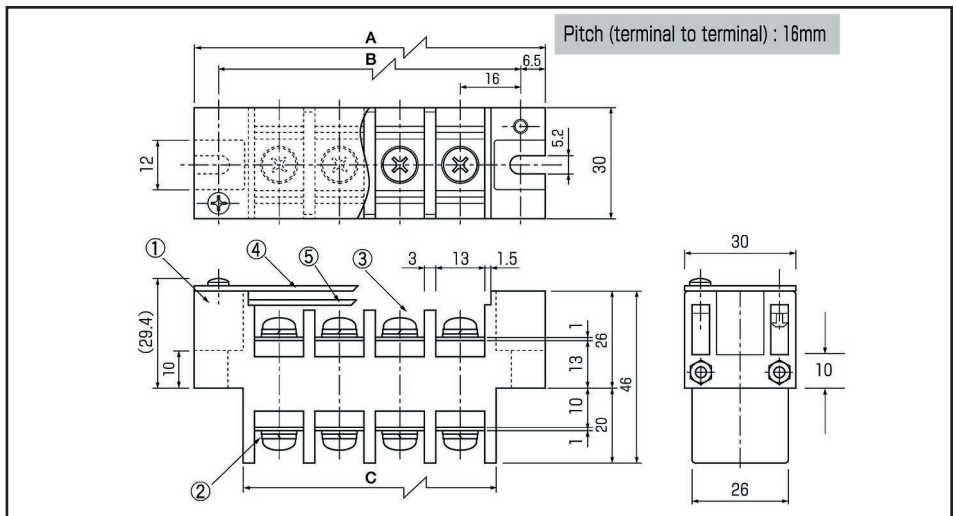
600 Volts / 60 Amps



JB-OTB-358 with clear cover installed



Typical application: color-coded wire



Available colors:

Red - White - Green - Blue - Yellow - Gray - Black

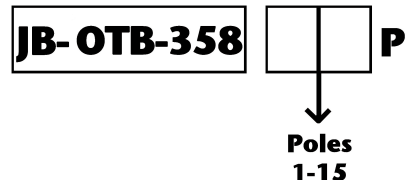
BlockMaster Electronics' new JB-OTB-358 Series are medium power, thru-panel terminal blocks available in 1-15 positions, which can be color-coded to match field wiring.

BlockMaster can help you solve the age-old problem of incorrect field wiring. This product can have a different color for each position, helping to eliminate installation mistakes. The installer simply matches the wire color to the terminal block position color.

These blocks are perfect for interfacing internally wired products to the outside world. They offer a clear protective cover to reduce shock hazard and each terminal has a screw with lock-washer for convenient field wiring as shown. Color-coded terminals help installers make proper field connections.



HOW TO ORDER:



1400 Howard Street Phone: (847) 956-1680
Elk Grove Village, IL 60007 Fax: (847) 956-1690

www.BlockMaster.com