



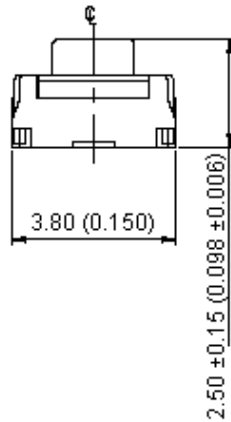
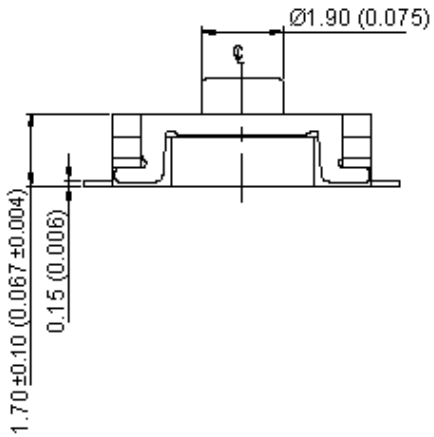
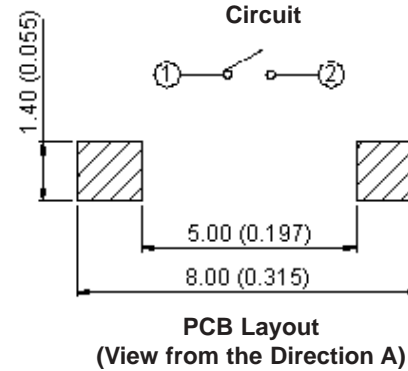
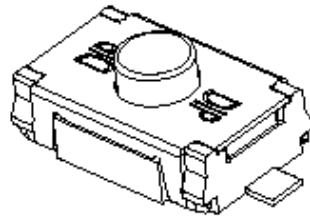
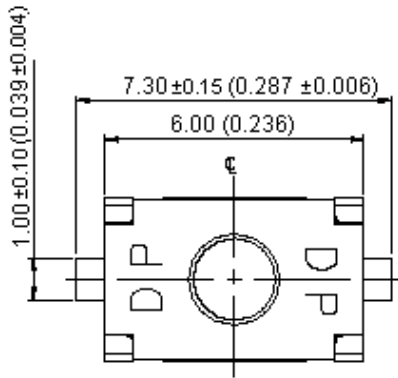
PART NO.

MCTAEF - Series

REVISIONS

ECN #	REV	DESCRIPTION	DRAWN	DATE	CHECKD	DATE	APPRVD	DATE
-	A	RELEASED	Ramya	03/6/08	Suresh	03/6/08	G. C	16/6/08

MCTAE



Dimensions : Millimetres (Inches)

This data sheet and its contents (the "Information") belong to the Premier Farnell Group (the "Group") or are licensed to it. No licence is granted for the use of it other than for information purposes in connection with the products to which it relates. No licence of any intellectual property rights is granted. The Information is subject to change without notice and replaces all data sheets previously supplied. The Information supplied is believed to be accurate but the Group assumes no responsibility for its accuracy or completeness, any error in or omission from it or for any use made of it. Users of this data sheet should check for themselves the Information and the suitability of the products for their purpose and not make any assumptions based on information included or omitted. Liability for loss or damage resulting from any reliance on the Information or use of it (including liability resulting from negligence or where the Group was aware of the possibility of such loss or damage arising) is excluded. This will not operate to limit or restrict the Group's liability for death or personal injury resulting from its negligence. SPC MULTICOMP is the registered trademark of the Group. © Premier Farnell plc 2008.

TOLERANCES:  
UNLESS OTHERWISE SPECIFIED, DIMENSIONS ARE FOR REFERENCE PURPOSES ONLY.

DRAWN BY:	DATE:
Ramya	03/06/08
CHECKED BY:	DATE:
Suresh	03/06/08
APPROVED BY:	DATE:
G.Cook	16/06/08

DRAWING TITLE:			
Tact Switch - Thin Type			
SIZE	DWG NO.	ELECTRONIC FILE	REV
A	M10001232	Tact Switch_DWG	A
SCALE: NTS		U.O.M.: mm (Inches)	SHEET: 1 OF 3



PART NO.

MCTAEF - Series

REVISIONS

ECN #	REV	DESCRIPTION	DRAWN	DATE	CHECKD	DATE	APPRVD	DATE
-	A	RELEASED	Ramya	03/6/08	Suresh	03/6/08	G. C	16/6/08

**Specifications:**

**Machanical:**

Operating force : N : 200gf.  
 R : 300gf.  
 S : 450gf.  
 Stroke : N : 0.30 ±015mm.  
 R : 0.35 ±015mm.  
 S : 0.45 ±015mm.  
 Opearting temperature : -40°C to +85°C.  
 Storage temperature : -40°C to +85°C.

**Electrical:**

Electrical life : N : 200,000 cycles.  
 R : 200,000 cycles.  
 S : 100,000 cycles.  
 Rating : 25mA, 24V dc.  
 Maximum contact resistance : 100MΩ.  
 Minimum insulation resistance : 100MΩ.  
 Dielectric strength : 300V ac/1 minute.

**Material:**

Cover : Stainless steel.  
 Stem : Rubber.  
 Color : Black.  
 Dome : Stainless steel with silver plating.  
 Base : LCP High-temperature thermoplastic.  
 Color : Black.  
 Terminal : Phosphor bronze, with silver plating.

**Soldering Process:**

**Hand Soldering** : Use a soldering iron of 30 watts, controlled at 350°C approximately maximum 5 seconds.  
**Reflow Slidering** : When applying reflow soldering, the peak temperature or the reflow oven should be set to 260°C maximum.

This data sheet and its contents (the "Information") belong to the Premier Farnell Group (the "Group") or are licensed to it. No licence is granted for the use of it other than for information purposes in connection with the products to which it relates. No licence of any intellectual property rights is granted. The Information is subject to change without notice and replaces all data sheets previously supplied. The Information supplied is believed to be accurate but the Group assumes no responsibility for its accuracy or completeness, any error in or omission from it or for any use made of it. Users of this data sheet should check for themselves the Information and the suitability of the products for their purpose and not make any assumptions based on information included or omitted. Liability for loss or damage resulting from any reliance on the Information or use of it (including liability resulting from negligence or where the Group was aware of the possibility of such loss or damage arising) is excluded. This will not operate to limit or restrict the Group's liability for death or personal injury resulting from its negligence. SPC MULTICOMP is the registered trademark of the Group. © Premier Farnell plc 2008.

**TOLERANCES:**

UNLESS OTHERWISE SPECIFIED, DIMENSIONS ARE FOR REFERENCE PURPOSES ONLY.

DRAWN BY:	DATE:
Ramya	03/06/08
CHECKED BY:	DATE:
Suresh	03/06/08
APPROVED BY:	DATE:
G.Cook	16/06/08

DRAWING TITLE:			
Tact Switch - Thin Type			
SIZE	DWG NO.	ELECTRONIC FILE	REV
A	M10001232	Tact Switch_DWG	A
SCALE: NTS	U.O.M.: mm (Inches)	SHEET: 2 OF 3	



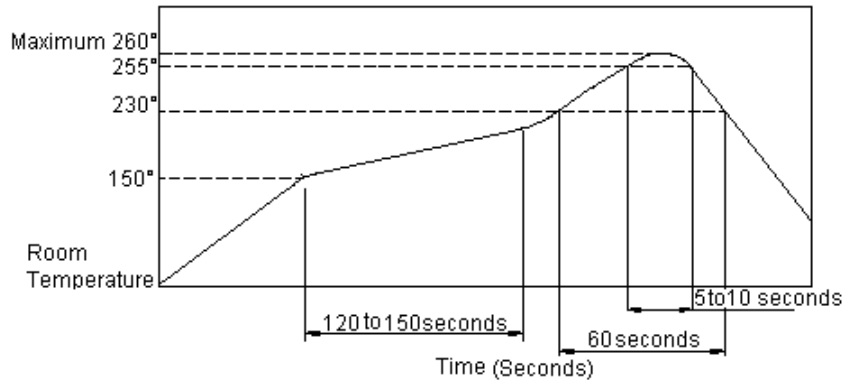
PART NO.

MCTAEF - Series

REVISIONS

ECN #	REV	DESCRIPTION	DRAWN	DATE	CHECKD	DATE	APPRVD	DATE
-	A	RELEASED	Ramya	03/6/08	Suresh	03/6/08	G. C	16/6/08

Reflow Temperature Profile:



Part Number Table

Description	Part Number
Switch, Tactile, SMD	MCTAEF-25N-V
	MCTAEF-25R-V
	MCTAEF-25S-V

Part Number Explanation:



Number of Positions : F = Flat Terminal.  
 Dimension H : 25 = 2.5mm.  
 Operating Force : N = 200gf.  
 Soldering : V = Lead Free.

<http://www.farnell.com>  
<http://www.newark.com>  
<http://www.cpc.co.uk>

This data sheet and its contents (the "Information") belong to the Premier Farnell Group (the "Group") or are licensed to it. No licence is granted for the use of it other than for information purposes in connection with the products to which it relates. No licence of any intellectual property rights is granted. The Information is subject to change without notice and replaces all data sheets previously supplied. The Information supplied is believed to be accurate but the Group assumes no responsibility for its accuracy or completeness, any error in or omission from it or for any use made of it. Users of this data sheet should check for themselves the information and the suitability of the products for their purpose and not make any assumptions based on information included or omitted. Liability for loss or damage resulting from any reliance on the Information or use of it (including liability resulting from negligence or where the Group was aware of the possibility of such loss or damage arising) is excluded. This will not operate to limit or restrict the Group's liability for death or personal injury resulting from its negligence. SPC MULTICOMP is the registered trademark of the Group. © Premier Farnell plc 2008.

TOLERANCES:  
 UNLESS OTHERWISE SPECIFIED, DIMENSIONS ARE FOR REFERENCE PURPOSES ONLY.

DRAWN BY:	DATE:
Ramya	03/06/08
CHECKED BY:	DATE:
Suresh	03/06/08
APPROVED BY:	DATE:
G.Cook	16/06/08

DRAWING TITLE:			
Tact Switch - Thin Type			
SIZE A	DWG NO. M10001232	ELECTRONIC FILE Tact Switch_DWG	REV A
SCALE: NTS	U.O.M.: mm (Inches)	SHEET: 3 OF 3	