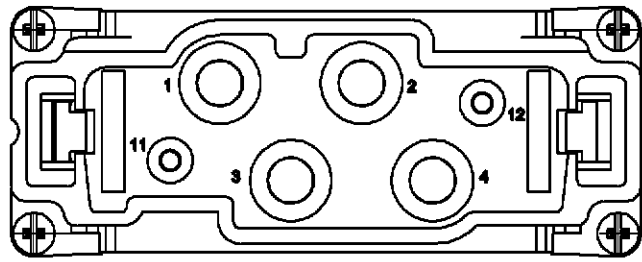


|   |                                       |  |                           |      |     |                             |      |     |      |
|---|---------------------------------------|--|---------------------------|------|-----|-----------------------------|------|-----|------|
| C | COPYRIGHT 2000<br>BY AMP INCORPORATED | ALL RIGHTS RESERVED<br>ALLE RECHTE VORBEHALTEN | PROJECT NR.<br>EGGMN04419 | P B1 | LTR | DESCRIPTION<br>BESCHREIBUNG | DATE | DWN | APVD |
|   |                                       |  |                           |      |     |                             |      |     |      |

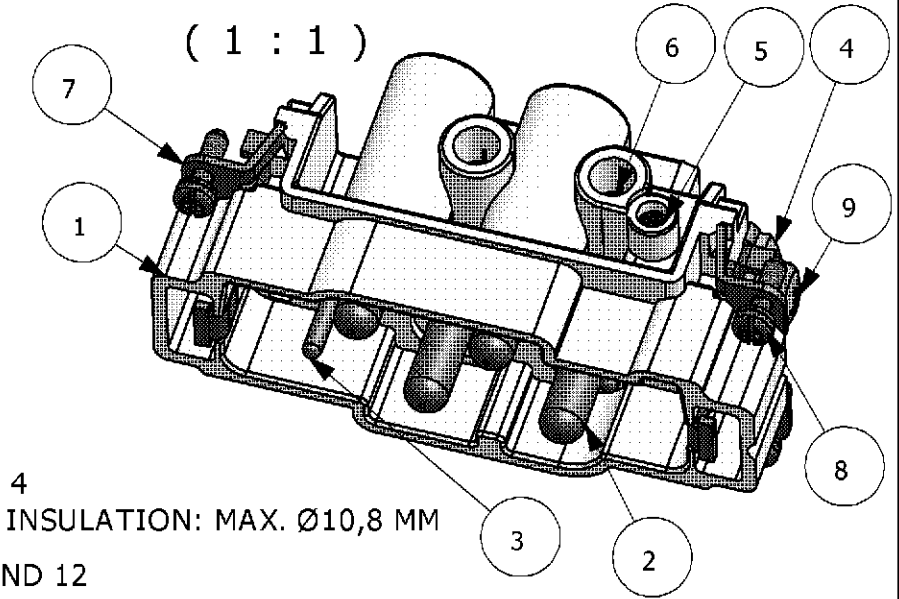
CONTACT ARRANGEMENT  
VIEW FROM CONECTING SIDE



A (2 : 1)

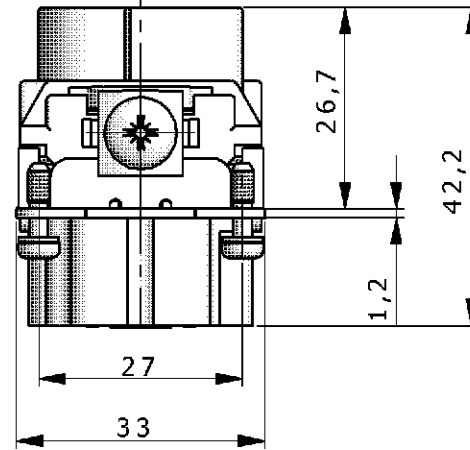
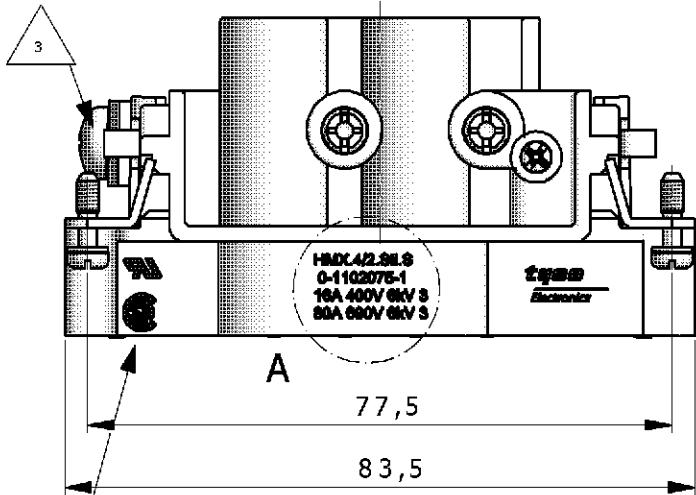
**HMX.4/2.STI.S**  
**0-1102075-1**  
**16A 400V 6kV 3**  
**80A 690V 6kV 3**

0-1 AS SHOWN  
ORDERING TEXT: HMX.4/2.STI.S

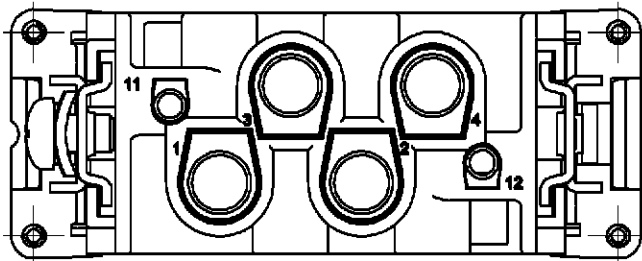


**NOTES**

- 1 POWER CONTACT: 1 TO 4  
OUTER DIMENSIONS OF INSULATION: MAX. Ø10,8 MM
- 2 SIGNAL CONTACT: 11 AND 12  
OUTER DIMENSIONS OF INSULATION: MAX. Ø4,8 MM
- 3 GROUNDING CONTACT
- 4 SUITABLE HOOD SIZE 6: SERIES HB; HD; EMV AND HIP
- 5 STANDARDS:  
DIN EN 61984; DIN EN 60664-1
- 6 UL; CSA AUTHORISATION
- 7 PACKAGING:  
5 PIECES IN A CARTON

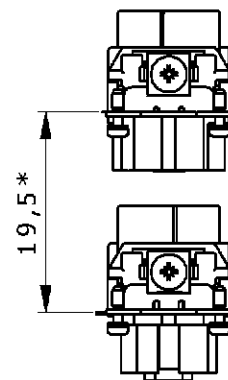
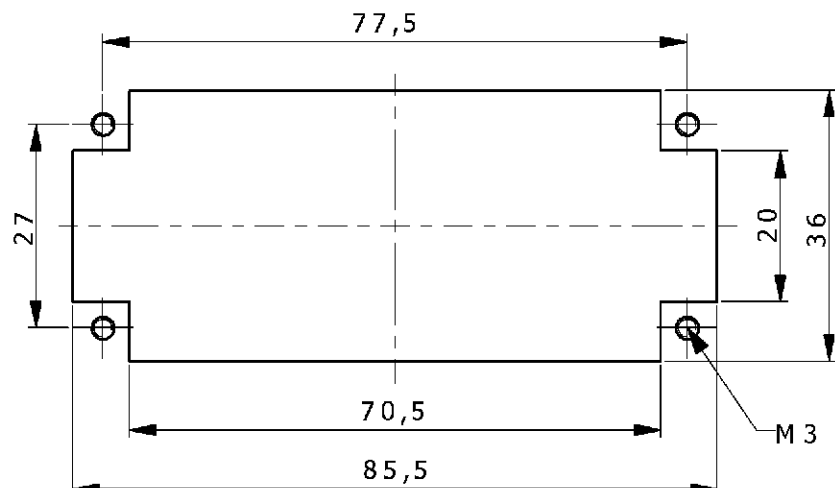


CONTACT ARRANGEMENT  
VIEW FROM TERMINATION SIDE



\* DISTANCE FOR GUARANTEED  
CONTACT MAX. 21 mm

PANET CUT-OUT CONTACT INSERT  
WHEN USED WITHOUT HOUSING



| QTY. | DESCRIPTION           | MATERIAL | SURFACE       | COLOR      | NOTE                 | ITEM |
|------|-----------------------|----------|---------------|------------|----------------------|------|
| 1    | SCREW                 | STEEL    | NICKEL PLATED | BLUE       | DIN EN ISO 1207-M5X8 | 9    |
| 4    | FIXING SCREW          | STEEL    | NICKEL PLATED | BLUE       | M3X10,5              | 8    |
| 2    | PIN GROUNDING CONTACT | BRASS    | NICKEL PLATED | BLUE       | -                    | 7    |
| 4    | THREAD PIN            | STEEL    | NICKEL PLATED | BLUE       | -                    | 6    |
| 2    | CONTACT SCREW         | STEEL    | NICKEL PLATED | BLUE       | M3X5,7               | 5    |
| 1    | CLAMP TAB             | STEEL    | NICKEL PLATED | BLUE       | ---                  | 4    |
| 2    | CONTACT PIN           | BRASS    | SILVER PLATED | BLUE       | -                    | 3    |
| 4    | PIN CONTACT           | BRASS    | SILVER PLATED | BLUE       | -                    | 2    |
| 1    | MALE INSERT           | PBT-GF30 | -             | LIGHT GREY | -                    | 1    |

PARTS LIST

**tyco**  
Electronics

Tyco / Electronics AMP GmbH  
D - 53819 Neunkirchen

**MALE INSERT**  
**HMX.4/2.STI.S**

NAME: MALE INSERT  
PRODUCT SPEC. / PRODUKTSPEZ.: 108-74058  
APPLICATION SPEC. / VERARBEITUNGSSPEZ.: 114-74058

SIZE: A3  
CAGE CODE: 00779  
DRAWING NO. / ZEICHNUNGS-NR.: 1102075

RESTRICTED TO NUR FUER

CUSTOMER DRAWING / KUNDENZEICHNUNG  
SCALE / MASSSTAB: 1:1  
SHEET / BLATT: 1 OF / VON 1  
REV. B1

THIS DRAWING IS A CONTROLLED DOCUMENT FOR AMP INCORPORATED. IT IS SUBJECT TO CHANGE AND THE CONTROLLING ENGINEERING ORGANIZATION SHOULD BE CONTACTED FOR THE LATEST REVISION. DIESSES ZEICHNUNGSDOKUMENT WIRD DURCH AMP INCORPORATED KONTROLLIERT. ÄNDERUNGEN, DIE DEM TECHNISCHEN FORTSCHRITT DIENEN, SIND VORBEHALTEN. DEM JEWEILS LETZTGÜLTIGEN ÄNDERUNGSSTAND ERFAHREN SIE AUF ANFRAGE.

DIMENSIONS:  
DIMENSIONEN:  
mm

TOLERANCES UNLESS OTHERWISE SPECIFIED:  
ALLGEMEINTOLERANZEN

n. ISO 8013 -  
n. ISO 2768 - mH-E  
n. DIN 16901- 140

0 PLC #  
1 PLC #  
2 PLC #  
3 PLC #  
ANGLES / WINKEL #

MATERIAL FINISH / OBERFLAECHE / FARBE

DWN 12.07.2005 SCHNEIDER  
CHK 12.07.2005 T. SCHNURPFEIL