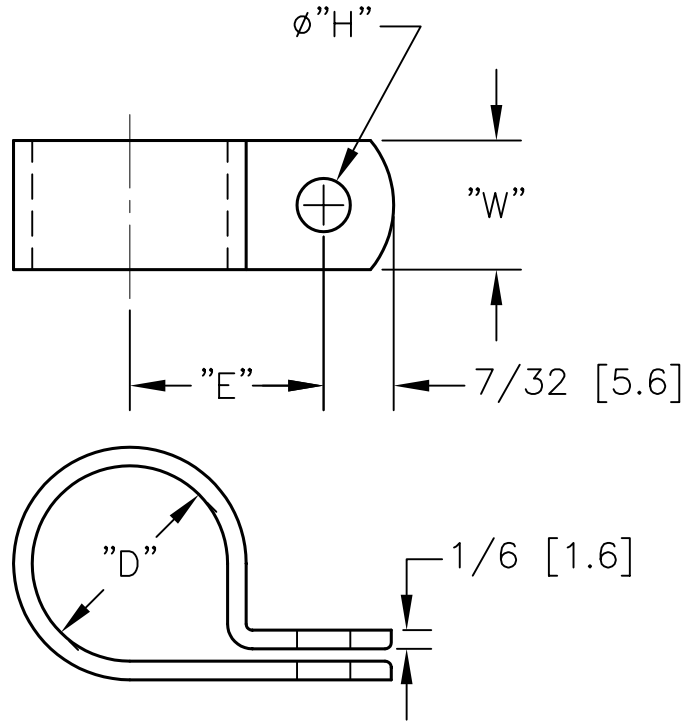


DCP #		REV	DESCRIPTION	DRAWN	DATE	CHECKD	DATE	APPRVD	DATE
1272		C	Renamed – was NCC-*	JWM	8/8/02	JC	8/9/02	JC	8/9/02
1865		D	RoHS ADDED	DCM	10/17/05	JWM	10/18/05	JWM	10/18/05



Material: Nylon 6/6, Natural

SPC Type No.	"D" Holding Dia. Inches [mm]	"E" Ref Inches [mm]	"W" Inches [mm]	"H" Inches [mm]
NCC-2	1/8 [3.2]	21/64 [8.3]	3/8 [9.5]	11/64 [4.4]
NCC-3	3/16 [4.8]	25/64 [9.9]		
NCC-4	1/4 [6.4]	27/64 [10.7]		
NCC-5	5/16 [7.9]	29/64 [11.5]		
NCC-6	3/8 [9.5]	31/64 [12.3]		
NCC-8	1/2 [12.7]	9/16 [14.3]		
NCC-10	5/8 [15.9]	5/8 [15.9]	1/2 [12.7]	13/64 [5.2]
NCC-12	3/4 [19.1]	49/64 [19.4]		
NCC-16	1 [25.4]	29/32 [23.0]		

SPC-F004.DWG

<b>TOLERANCES:</b> Tolerances Unless Otherwise Specified .X X ±0.02 .XXX ±0.010 Fractional: ±1/64	DRAWN BY:	DATE:	DRAWING TITLE:			
	Jose A. Panganiban	12/16/91	Cable Clamps			
	CHECKED BY:	DATE:	SIZE	DWG. NO.	ELECTRONIC FILE	REV
	John Cole	12/16/91	A	TA-543	TA-543.dwg	D
APPROVED BY:	DATE:	SCALE:	U.O.M.: INCHES [mm]	SHEET: 1 OF 1		
John Liszka	12/16/91	NTS				