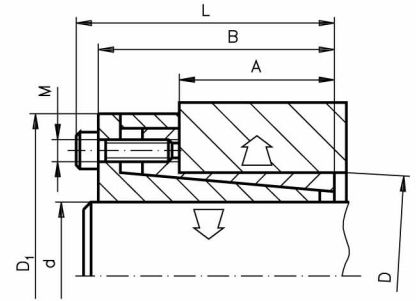


# CLAMPING ELEMENTS

- Self-centering
- Suitable for small and thin walled hubs
- Eliminates keyways



Farnell Codes : 3469517 - 9657

Order Code	d	D	D <sub>1</sub>	A	B	L	M	T <sub>s</sub> (Nm)	T (Nm)	F (kN)	P (N/mm <sup>2</sup> )	Weight (kg)
109 615 612	12	18	32	14	26	31	M4	5	60	10	105	0.14
109 615 614	14	23	38	14	26	31	M4	5	75	10	90	0.15
109 615 616	16	24	45	16	36	42	M6	17	145	18	120	0.22
109 615 618	18	26	47	18	38	44	M6	17	200	22	120	0.23
109 615 619	19	27	49	18	38	44	M6	17	210	22	120	0.25
109 615 620	20	28	49	18	38	44	M6	17	220	22	120	0.25
109 615 622	22	32	54	25	45	51	M6	17	250	22	120	0.32
109 615 624	24	34	56	25	45	51	M6	17	270	22	120	0.34
109 615 625	25	34	56	25	45	51	M6	17	280	22	120	0.33
109 615 628	28	39	61	25	45	51	M6	17	500	35	150	0.41
109 615 630	30	41	62	25	45	51	M6	17	530	35	150	0.41
109 615 632	32	43	65	30	50	56	M6	17	750	45	150	0.48
109 615 635	35	47	69	30	50	56	M6	17	850	48	140	0.55
109 615 638	38	50	72	30	50	56	M6	17	930	48	140	0.58
109 615 640	40	53	75	30	50	56	M6	17	980	48	130	0.63
109 615 642	42	55	78	40	65	73	M8	41	1000	48	130	0.88
109 615 645	45	59	85	40	65	73	M8	41	1900	84	130	1.03
109 615 648	48	62	87	45	70	78	M8	41	2000	84	130	0.98
109 615 650	50	65	92	45	70	78	M8	41	2700	110	140	1.27

**Key:**

T<sub>s</sub> = Screw tightening torque

T = Torque transmissible with tightening torque T<sub>s</sub>

F = Axial force transmissible with tightening torque T<sub>s</sub>

P = Hub surface pressure